

AS YOU LIKE IT

by William Shakespeare

Nortre Dame Shakespeare Festival

Scenic Package

Drawing

- 1-1. Ground plan: Greenhouse, Court
- 1-2. Ground plan: Arden
- 2-1. Section: Greenhouse, Court
- 2-2. Section: Arden
3. Greenhouse unit
- 4-1. Court: Plan & perspective
- 4-2. Court unit A & B
- 4-3. Court unit A & B details, & C
- 4-4. Court details in perspective
- 5-1. Arden: front, plan
- 5-2. Arden unit A, B, C
- 5-3. Arden unit D & E
- 5-4. Arden in perspective

Paint Elevation

1. Floor
2. Greenhouse
3. Court
- 4-1. Arden A, B
- 4-2. Arden D, E



Ground plan:

- Horizontal section at 6' high
- solid line: extents below cut plane
- dashed line: extents above cut plane
- cutting plane indicated with black fill

Arden scaffolding:
stationary

bench

B. court

The door unit flown out during the
changeover for Arden

A. greenhouse

after Act I scene I, flown out

House curtain: preset
after Act I scene I, fully open

0"

-8"

-16"

- 72 - BOUNCE
- 71 - UTILITY #28
- 70 - UTILITY #27
- 69 - UTILITY #26
- 68 - UTILITY #25
- 66 - UTILITY #24
- 64 - UTILITY #23
- 63 - CYCLORAMA
- 62 - UTILITY #22
- 61 - BLACK PANELS
- 60 - BLACK SCRIM
- 58 - LEGS #5
- 57 - BORDER #4
- 56 - UTILITY #21

- 53 - 4TH ELECTRIC
- 52 - UTILITY #20
- 50 - UTILITY #19
- 49 - UTILITY #18

- 46 - UTILITY #17
- 45 - UTILITY #16
- 44 - LEGS #4
- 43 - BORDER #3
- 41 - UTILITY #15
- 40 - UTILITY #14
- 38 - 3RD ELECTRIC
- 36 - UTILITY #13

- 33 - UTILITY #12
- 31 - MID-STAGE TRAVELER
- 30 - LEGS #3
- 29 - BORDER #2
- 27 - UTILITY #11
- 25 - UTILITY #10

- 23 - 2ND ELECTRIC
- 21 - door unit
- 20 - UTILITY #8
- 19 - BLACK PANELS

- 17 - LEGS #2
- 16 - BORDER #1
- 15 - PROJECTION SCREEN

- 13 - UTILITY #7
- 11 - UTILITY #6
- 10 - UTILITY #5
- 9 - UTILITY #4
- 8 - UTILITY #3

- 6 - 1ST ELECTRIC
- 4 - UTILITY #2
- 3 - greenhouse
- 2 - LEGS #1
- 1 - FLAT PANELS
- HC - HOUSE CURTAIN
- EC - FIRE CURTAIN

As You Like It
by William
Shakespeare

Directing: Sara Holdren
Costume: Elivia Blitz
Lighting: Jen Rock
Sound: Kate Marvin
Prop: Leah Jordan
Puppet: Greg Corbino
Technical Directing:
Jeff Szymanowski
Scenic: Inseung Park
Drafting: Inseung Park

**Nortre Dame
Shakespeare Festival**

Ground Plan:
Greenhouse, court

Scale: 1/4" = 1'-0"

Date: June 10, 2024



S.D. 13829
SCENIC DESIGNER
SIGNATURE *Inseung Park*

1.1

Of 5

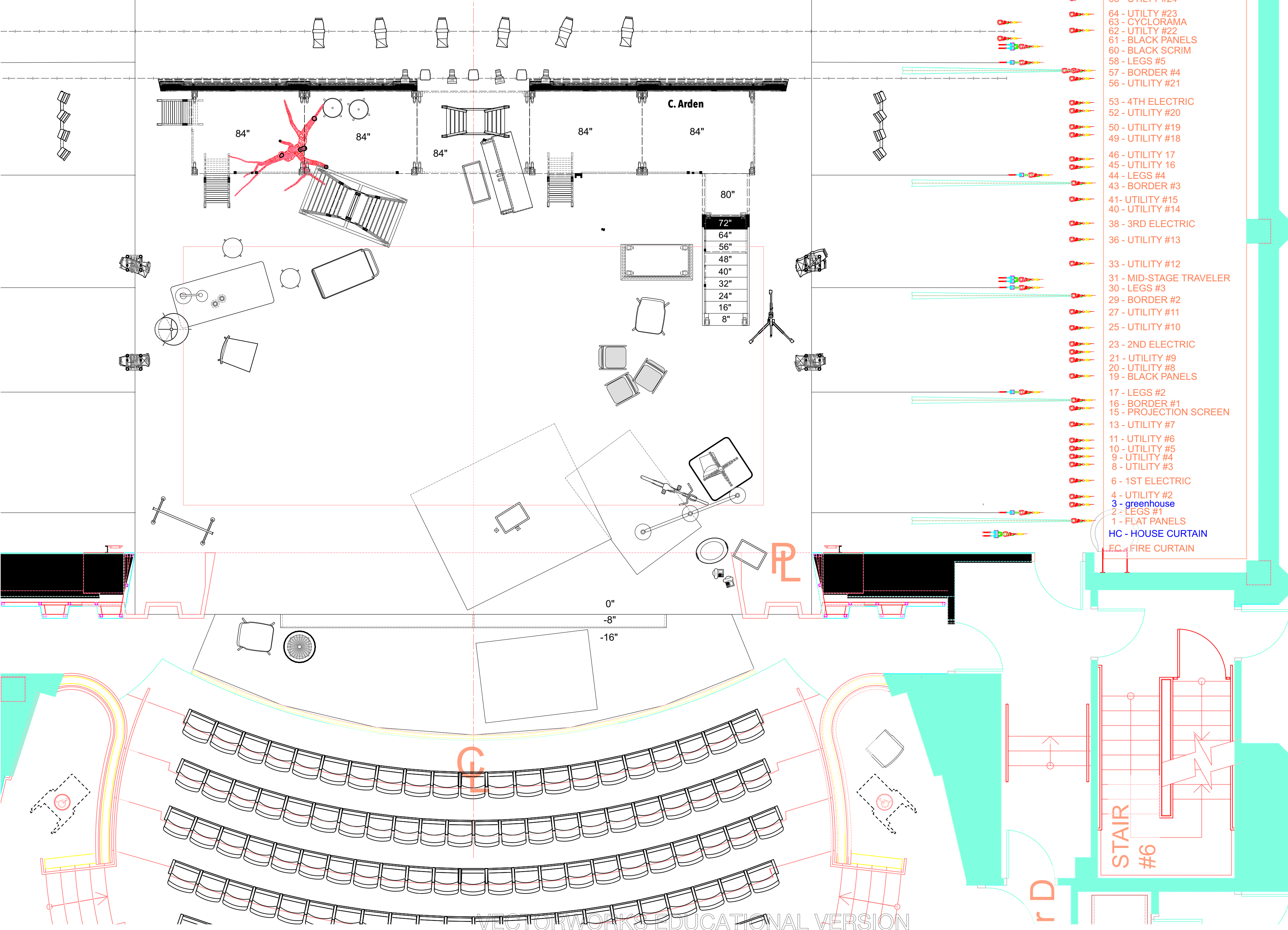
Ground plan:

Horizontal section at 6' high

- solid line: extents below cut plane
- dashed line: extents above cut plane
- cutting plane indicated with black fill

NOTE:

- For Arden
- border/legs flown out
- cyc, black scrim flown out
- court unit rotated and replaced
- The list of Arden items will be provided



- 72 - BOUNCE
- 71 - UTILITY #28
- 70 - UTILITY #27
- 69 - UTILITY #26
- 68 - UTILITY #25
- 66 - UTILITY #24
- 64 - UTILITY #23
- 63 - CYCLORAMA
- 62 - UTILITY #22
- 61 - BLACK PANELS
- 60 - BLACK SCRIM
- 58 - LEGS #5
- 57 - BORDER #4
- 56 - UTILITY #21
- 53 - 4TH ELECTRIC
- 52 - UTILITY #20
- 50 - UTILITY #19
- 49 - UTILITY #18
- 46 - UTILITY 17
- 45 - UTILITY 16
- 44 - LEGS #4
- 43 - BORDER #3
- 41- UTILITY #15
- 40 - UTILITY #14
- 38 - 3RD ELECTRIC
- 36 - UTILITY #13
- 33 - UTILITY #12
- 31 - MID-STAGE TRAVELER
- 30 - LEGS #3
- 29 - BORDER #2
- 27 - UTILITY #11
- 25 - UTILITY #10
- 23 - 2ND ELECTRIC
- 21 - UTILITY #9
- 20 - UTILITY #8
- 19 - BLACK PANELS
- 17 - LEGS #2
- 16 - BORDER #1
- 15 - PROJECTION SCREEN
- 13 - UTILITY #7
- 11 - UTILITY #6
- 10 - UTILITY #5
- 9 - UTILITY #4
- 8 - UTILITY #3
- 6 - 1ST ELECTRIC
- 4 - UTILITY #2
- 3 - greenhouse
- 2 - LEGS #1
- 1 - FLAT PANELS
- HC - HOUSE CURTAIN
- EC - FIRE CURTAIN

As You Like It
by William Shakespeare

Directing: Sara Holdren
Costume: Elivia Blitz
Lighting: Jen Rock
Sound: Kate Marvin
Prop: Leah Jordan
Puppet: Greg Corbino
Technical Directing: Jeff Szymanowski
Scenic: Inseung Park
Drafting: Inseung Park

Nortre Dame Shakespeare Festival

Ground Plan:
Arden

Scale: 1/4"=1'-0"

Date: June 10, 2024



S.D. 13829
SCENIC DESIGNER
SIGNATURE *[Signature]*

As You Like It

by William Shakespeare

Directing: Sara Holdren
Costume: Elivia Blitz
Lighting: Jen Rock
Sound: Kate Marvin
Prop: Leah Jordan
Puppet: Greg Corbino
Technical Directing: Jeff Szymanowski
Scenic: Inseung Park
Drafting: Inseung Park

Nortre Dame Shakespeare Festival

Section:
Greenhouse, court

Scale: 1/4"=1'-0"

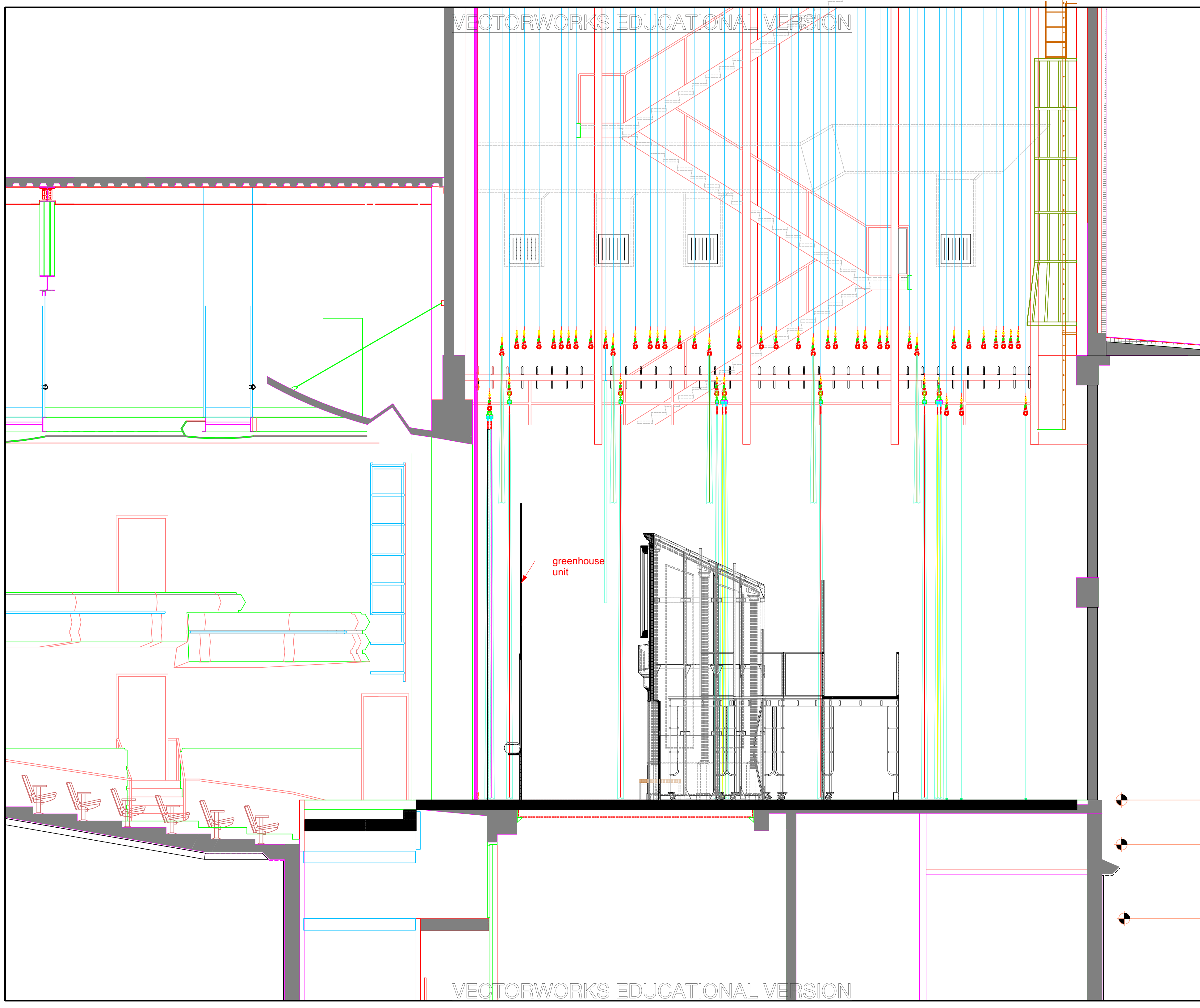
Date: June 10, 2024



S.D. 13829
SCENIC DESIGNER

SIGNATURE *Inseung Park*

2.1



As You Like It
by William Shakespeare

Directing: Sara Holdren
Costume: Elivia Blitz
Lighting: Jen Rock
Sound: Kate Marvin
Prop: Leah Jordan
Puppet: Greg Corbino
Technical Directing: Jeff Szymanowski
Scenic: Inseung Park
Drafting: Inseung Park

Nortre Dame Shakespeare Festival

Section:
Arden

Scale: 1/4" = 1'-0"

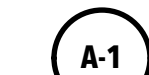
Date: June 10, 2024



S.D. 13829
SCENIC DESIGNER
SIGNATURE *Inseung Park*

2-2

A-1

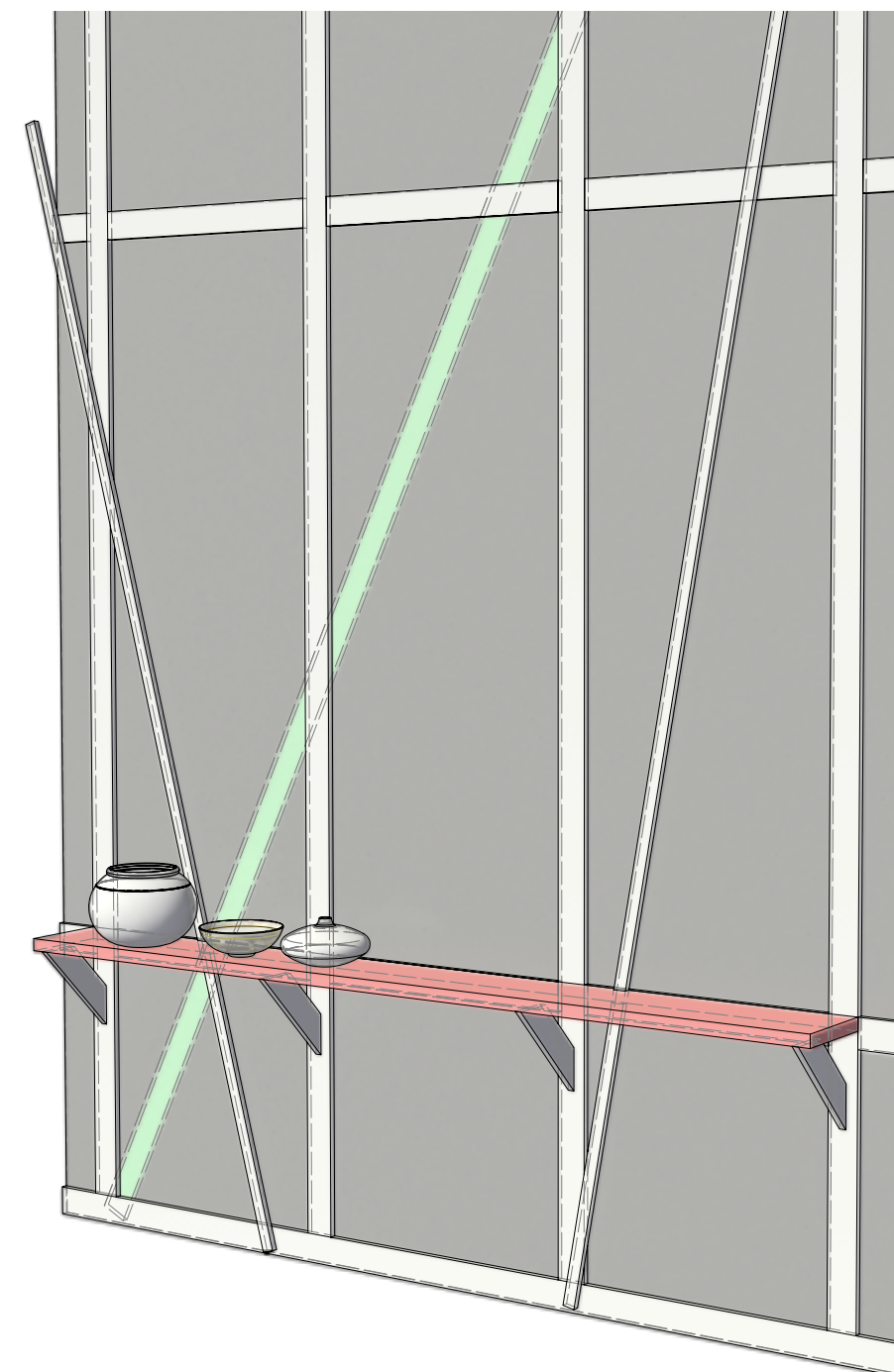


NOTE:

- The greenhouse unit is made entirely of 1x4 lumber, except for two pieces of 1x2 lumber indicated in drawing A-1.
- The unit will be flown out after Act I scene I.
- A lumber (green) is behind the greenhouse film.
- Two pieces of 1x2 lumber are in front of the greenhouse film.
- The greenhouse film is frosted white (translucent).
- Decorate the shelf with some plants and vases (about five). See reference.



A-3



A-2

As You Like It
by William
Shakespeare

Directing: Sara Holdren
Costume: Elivia Blitz
Lighting: Jen Rock
Sound: Kate Marvin
Prop: Leah Jordan
Puppet: Greg Corbino
Technical Directing:
Jeff Szymanowski
Scenic: Inseung Park
Drafting: Inseung Park


Nortre Dame Shakespeare Festival

Greenhouse

Scale: 1/2"=1'-0"

Date: June 10, 2024

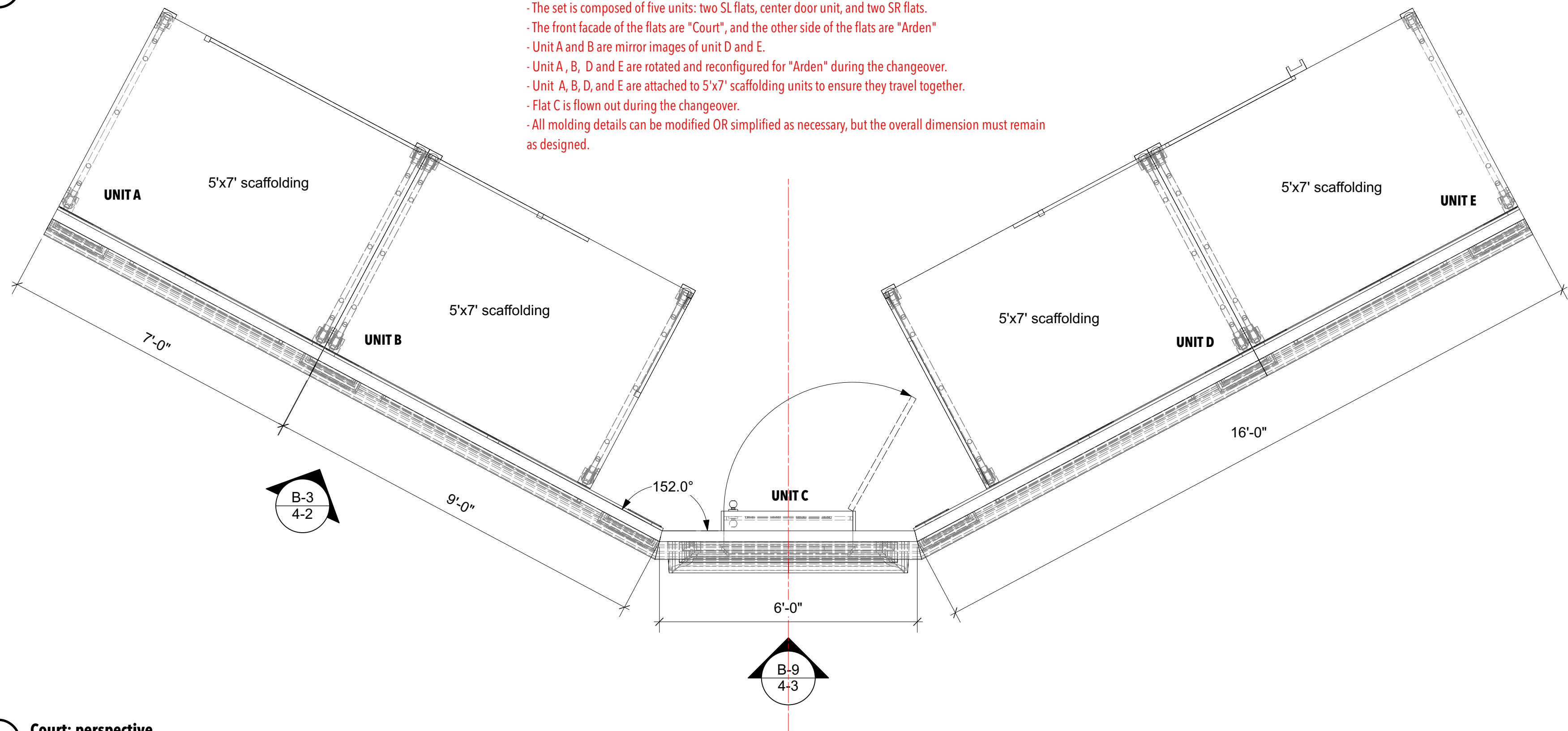


S.D. 13829
SCENIC DESIGNER
SIGNATURE 

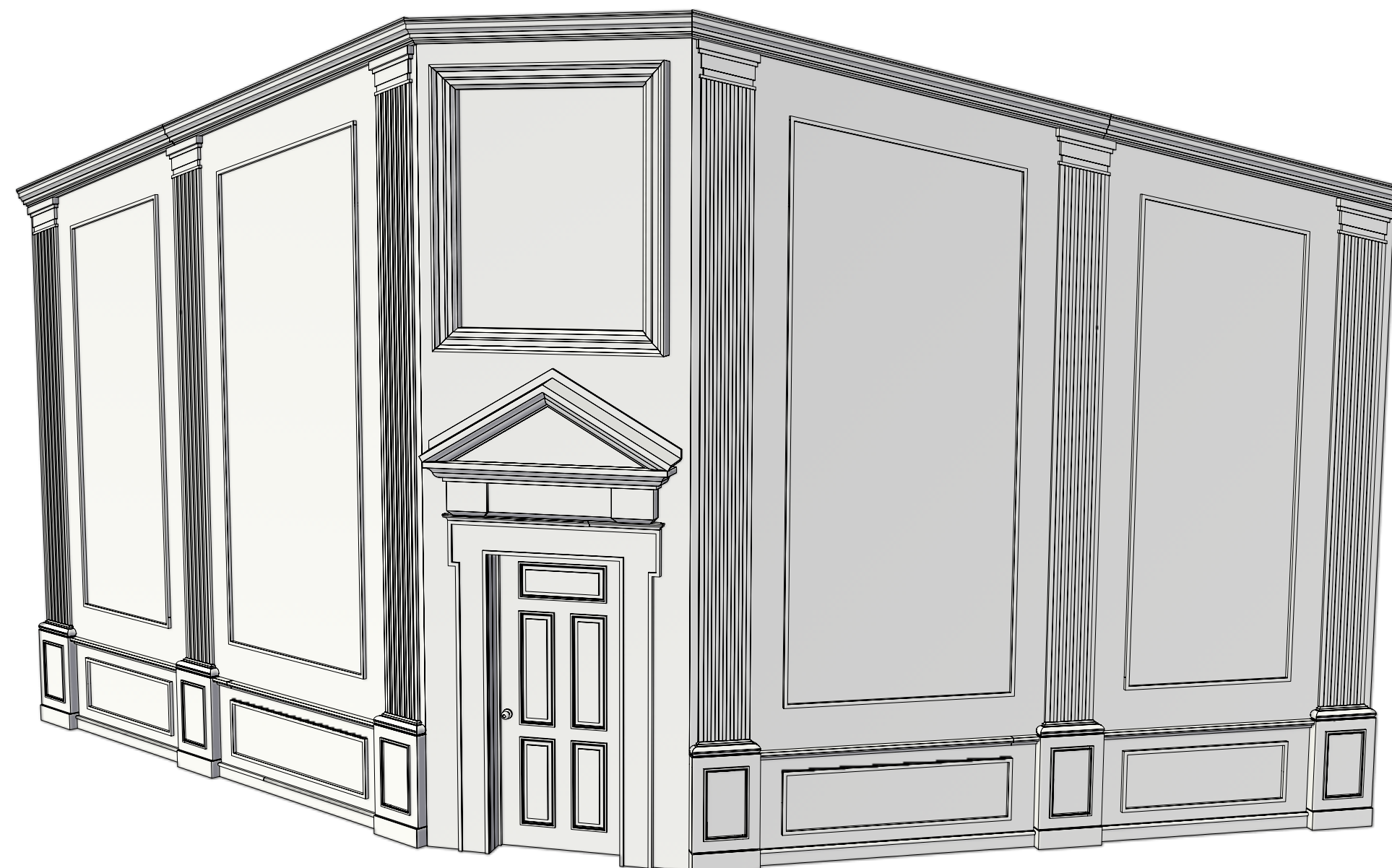
B-1 Court: plan

NOTE:

- The set is composed of five units: two SL flats, center door unit, and two SR flats.
- The front facade of the flats are "Court", and the other side of the flats are "Arden"
- Unit A and B are mirror images of unit D and E.
- Unit A, B, D and E are rotated and reconfigured for "Arden" during the changeover.
- Unit A, B, D, and E are attached to 5'x7' scaffolding units to ensure they travel together.
- Flat C is flown out during the changeover.
- All molding details can be modified OR simplified as necessary, but the overall dimension must remain as designed.



B-2 Court: perspective



As You Like It
by William Shakespeare

Directing: Sara Holdren
Costume: Elivia Blitz
Lighting: Jen Rock
Sound: Kate Marvin
Prop: Leah Jordan
Puppet: Greg Corbino
Technical Directing: Jeff Szymanowski
Scenic: Inseung Park
Drafting: Inseung Park

Nortre Dame Shakespeare Festival

Court:
plan & perspective

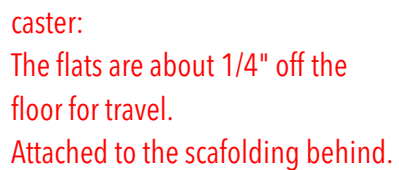
Scale: 1/2" = 1'-0"

Date: June 10, 2024

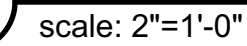


S.D. 13829
SCENIC DESIGNER

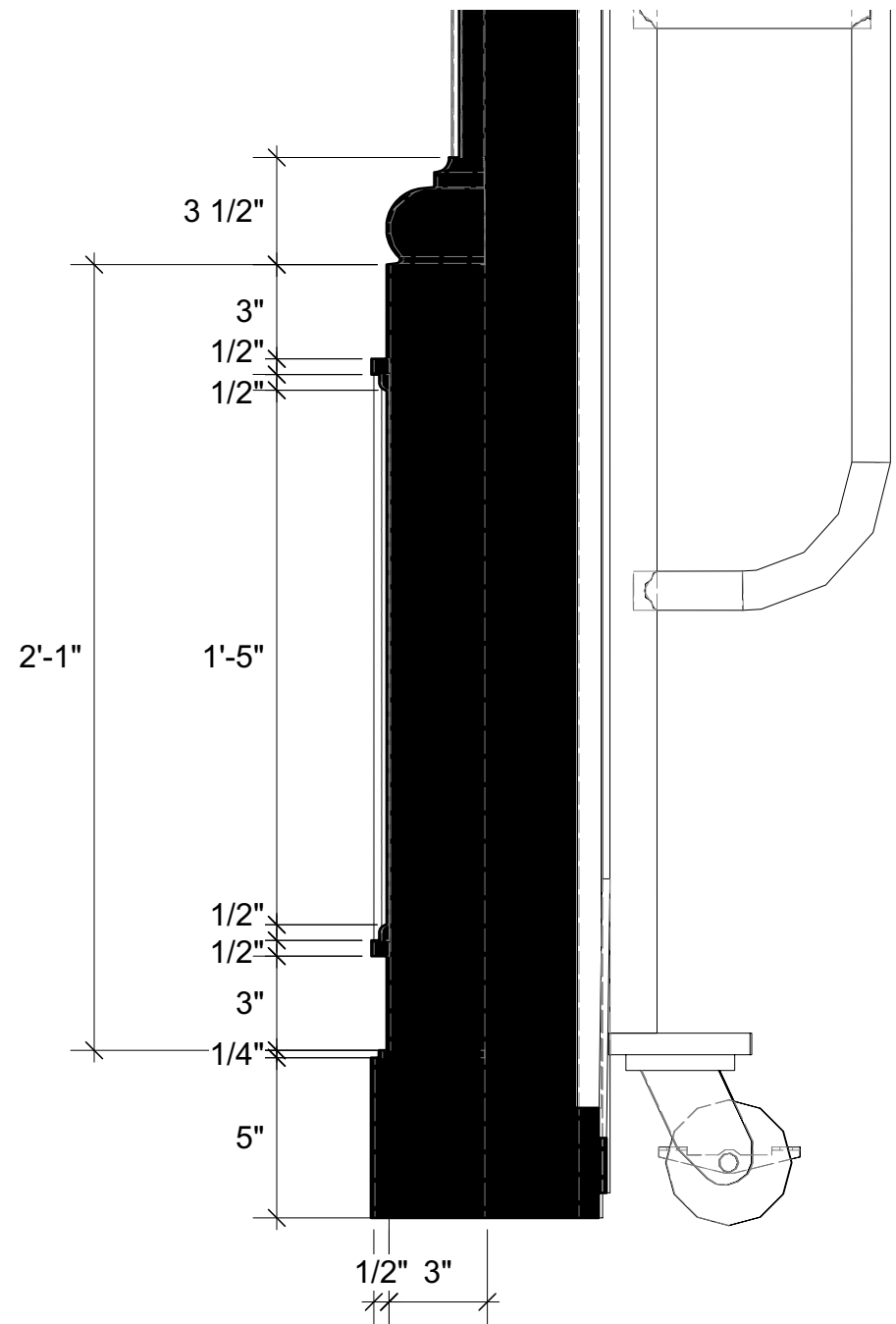
SIGNATURE *Inseung Park*



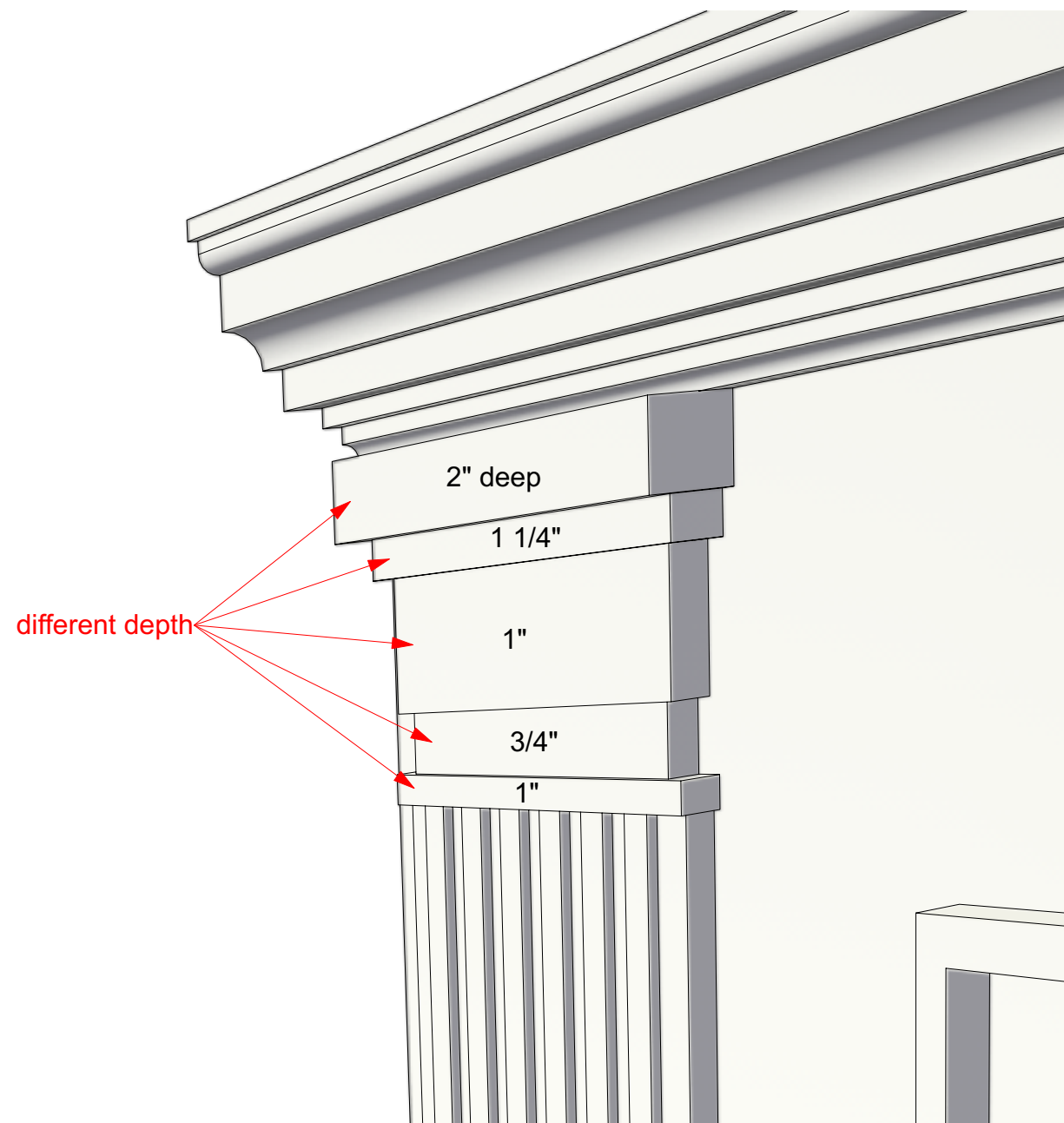
scale: 2"=1'-0"



B-6 section: pilaster base details
scale: 2"=1'-0"

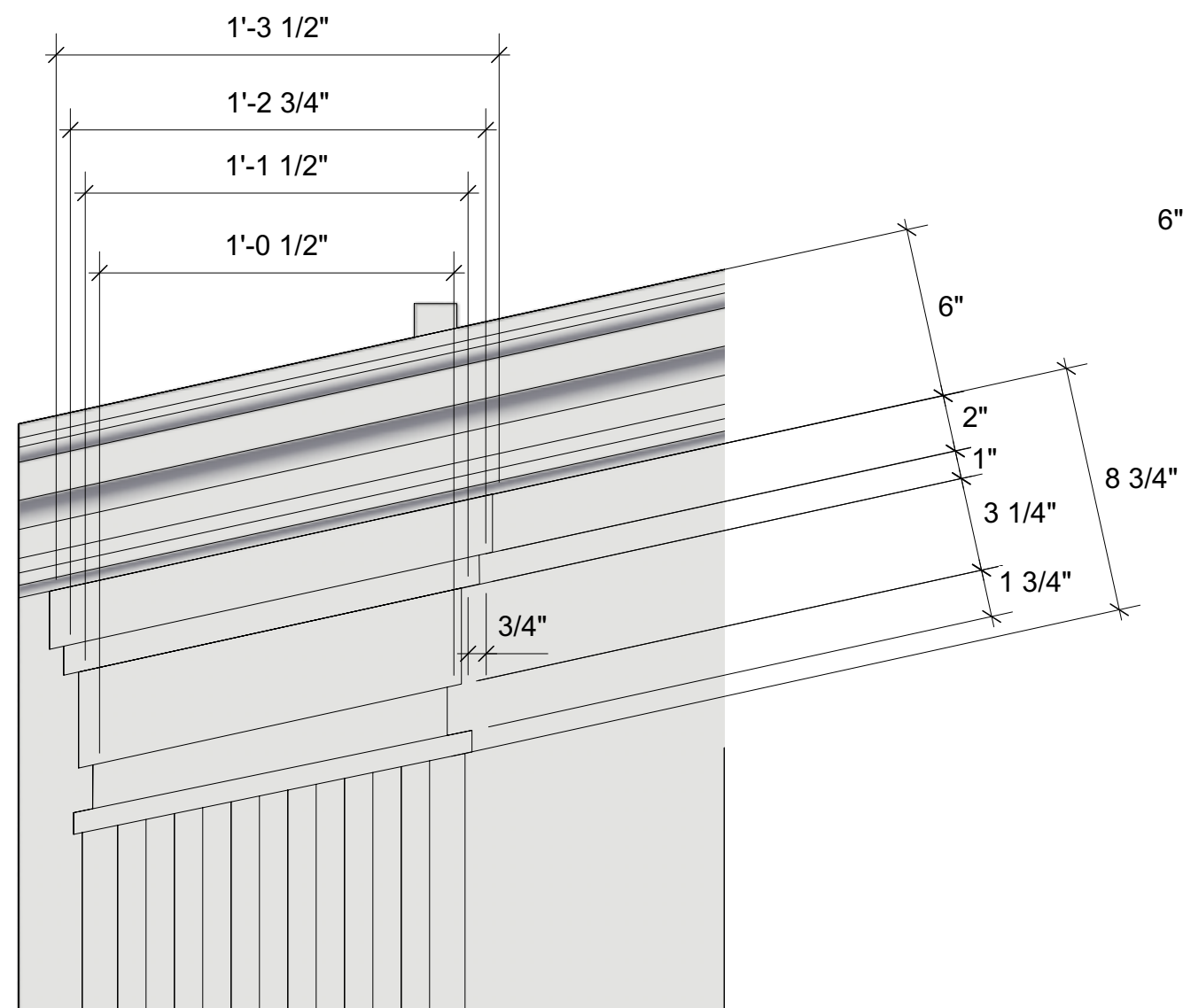


B-8 Capital & crown molding details: perspective
scale: 2"=1'-0"

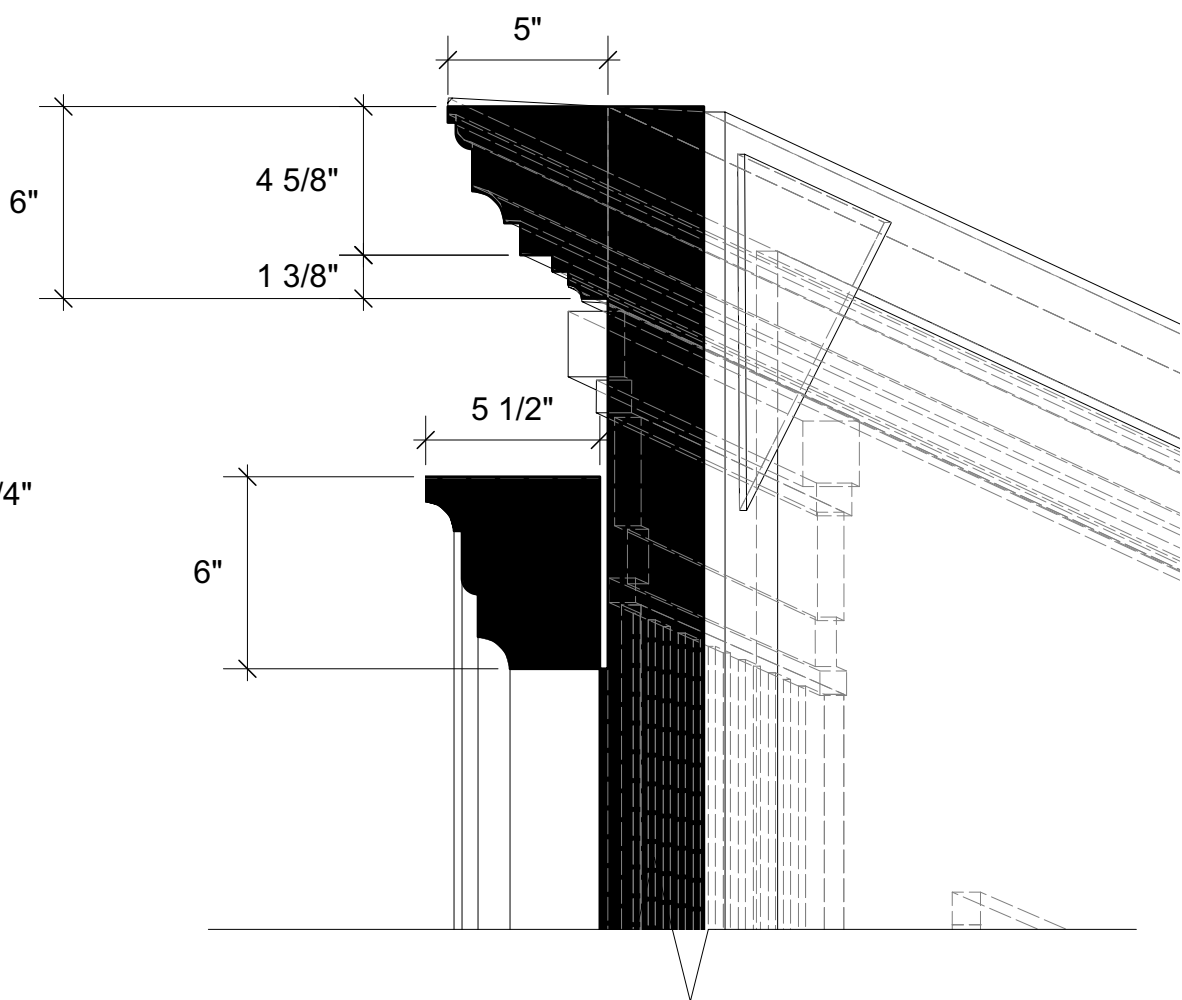


- Crown molding and the portrait frame can be simplified and modified.
- The height of the crown molding and portrait frame is 6"
- However, the design of the crown molding should be more elaborate than that of the portrait frame.

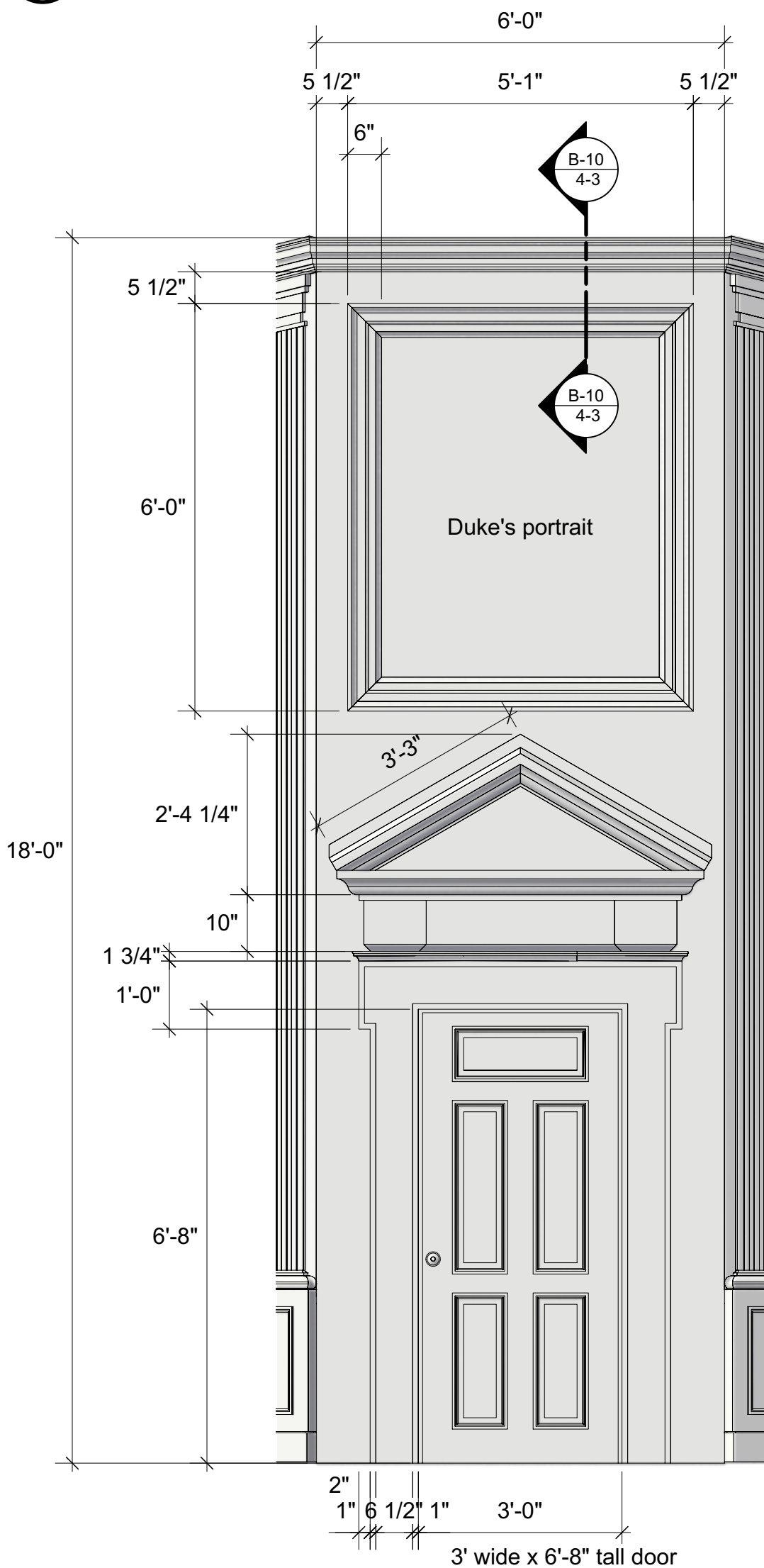
B-7 Capital & crown molding front details
scale: 2"=1'-0"



B-10 Section: crown molding & portrait frame
scale: 2"=1'-0"



B-9 Court unit C: front
scale: 2"=1'-0"



As You Like It
by William Shakespeare

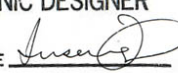
Directing: Sara Holdren
Costume: Elivia Blitz
Lighting: Jen Rock
Sound: Kate Marvin
Prop: Leah Jordan
Puppet: Greg Corbino
Technical Directing: Jeff Szymanowski
Scenic: Inseung Park
Drafting: Inseung Park

Nortre Dame Shakespeare Festival

Court A & B details, C

Scale: 1/2"=1'-0"

Date: June 10, 2024


S.D. 13829
SCENIC DESIGNER
SIGNATURE 

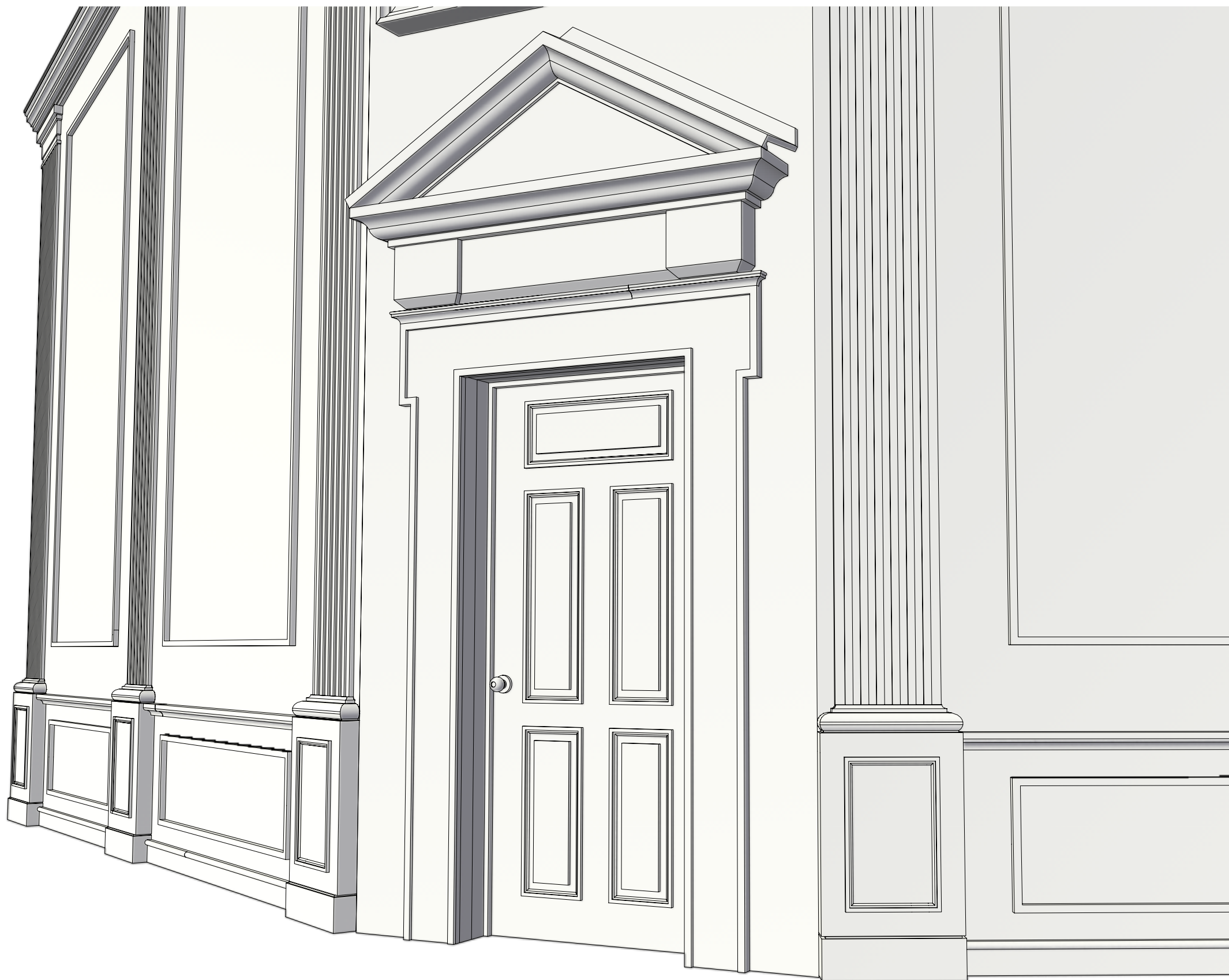
B-10 pediment close-up



B-11 pilaster base close-up



B-12 door close-up



As You Like It

by William
Shakespeare

Directing: Sara Holdren
Costume: Elivia Blitz
Lighting: Jen Rock
Sound: Kate Marvin
Prop: Leah Jordan
Puppet: Greg Corbino
Technical Directing:
Jeff Szymanowski
Scenic: Inseung Park
Drafting: Inseung Park

**Notre Dame
Shakespeare Festival**

**Court details
in perspective**

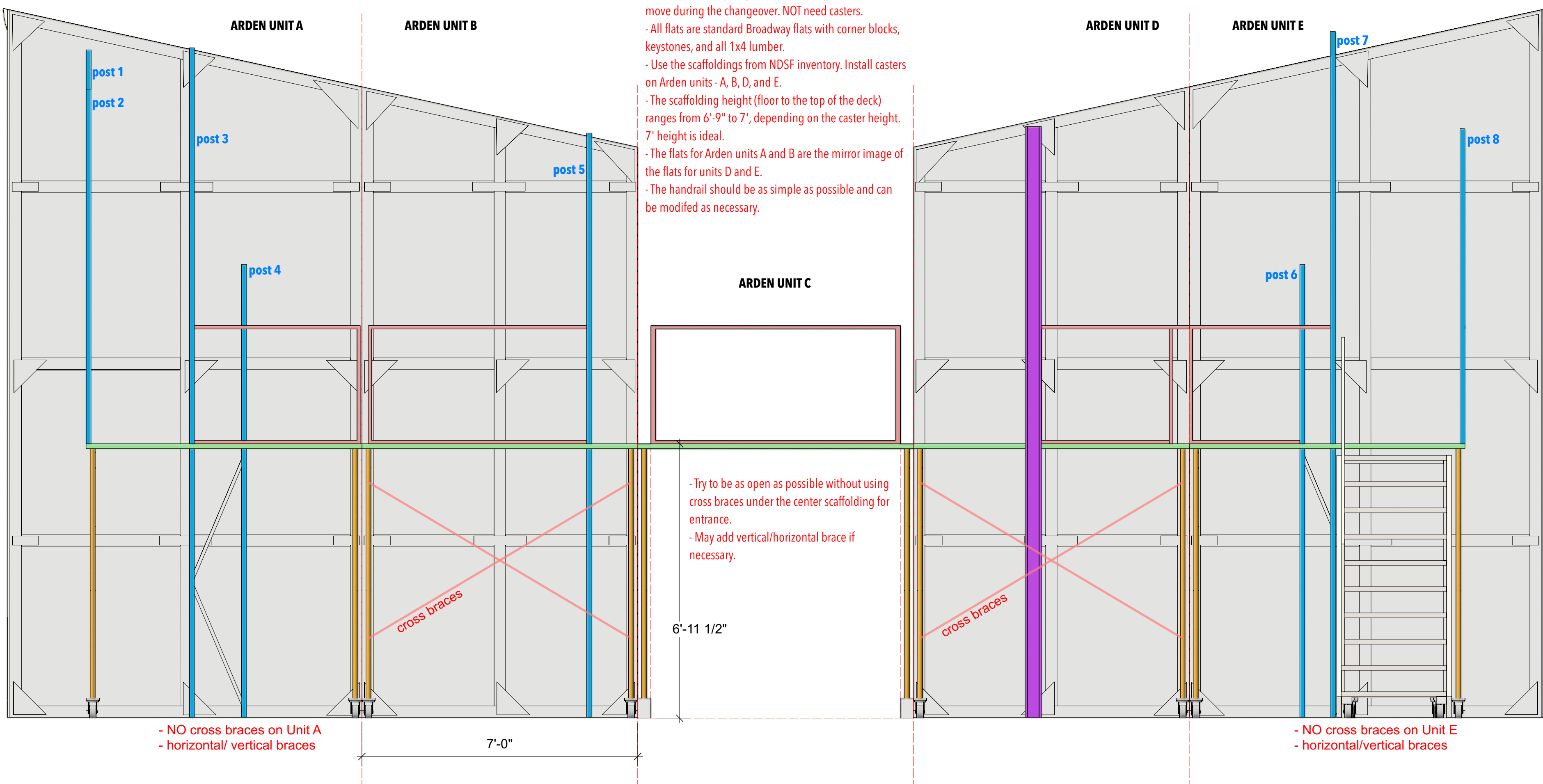
Scale: N/A

Date: June 10, 2024

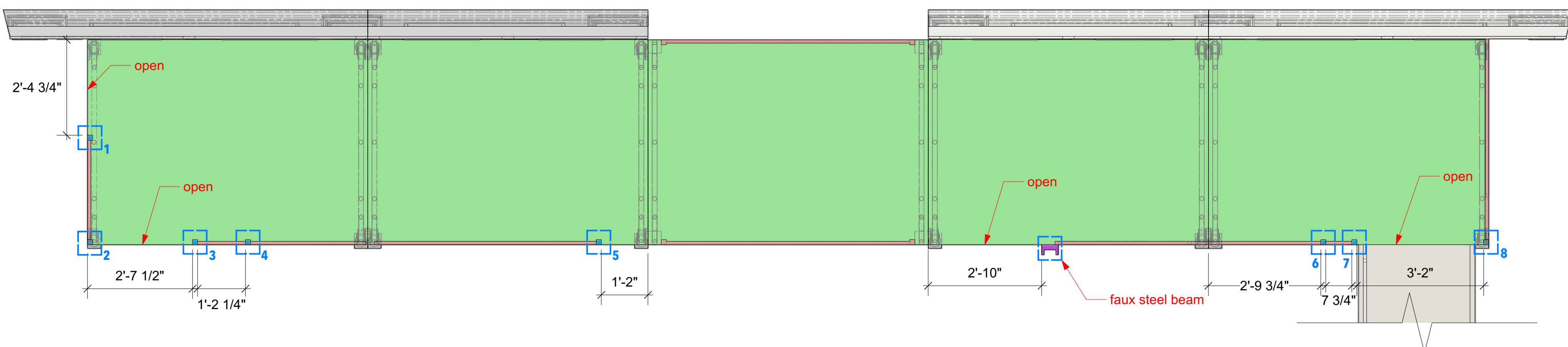


S.D. 13829
SCENIC DESIGNER
SIGNATURE *Inseung Park*

C-1 Arden units: front



C-2 Arden units: plan



As You Like It
by William Shakespeare


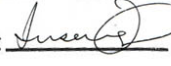
Directing: Sara Holdren
Costume: Elivia Blitz
Lighting: Jen Rock
Sound: Kate Marvin
Prop: Leah Jordan
Puppet: Greg Corbino
Technical Directing: Jeff Szymanowski
Scenic: Inseung Park
Drafting: Inseung Park

Nortre Dame Shakespeare Festival

Arden units

Scale: 1/2" = 1'-0"

Date: June 10, 2024

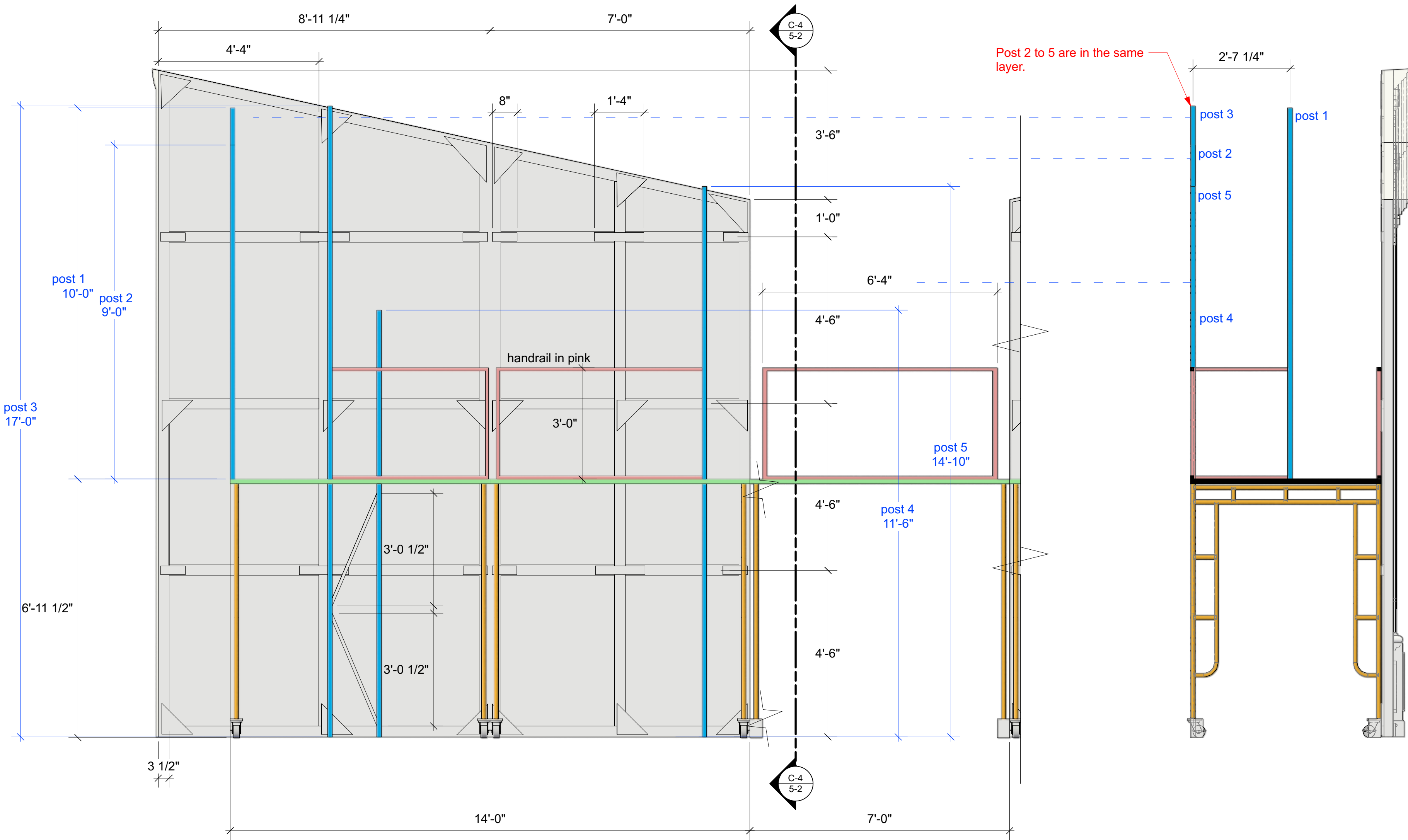

S.D. 13829
SCENIC DESIGNER
SIGNATURE 

NOTE:

- Ensure the dimensions and placement of the posts in blue are accurate.
- The posts, handrails, stairs built from steel materials are left unpainted.

C-3 Arden unit A, B & C: front

C-4 section



As You Like It
by William Shakespeare

Directing: Sara Holdren
Costume: Elivia Blitz
Lighting: Jen Rock
Sound: Kate Marvin
Prop: Leah Jordan
Puppet: Greg Corbino
Technical Directing: Jeff Szymanowski
Scenic: Inseung Park
Drafting: Inseung Park

Nortre Dame Shakespeare Festival

Arden unit A & B

Scale: 1/2" = 1'-0"

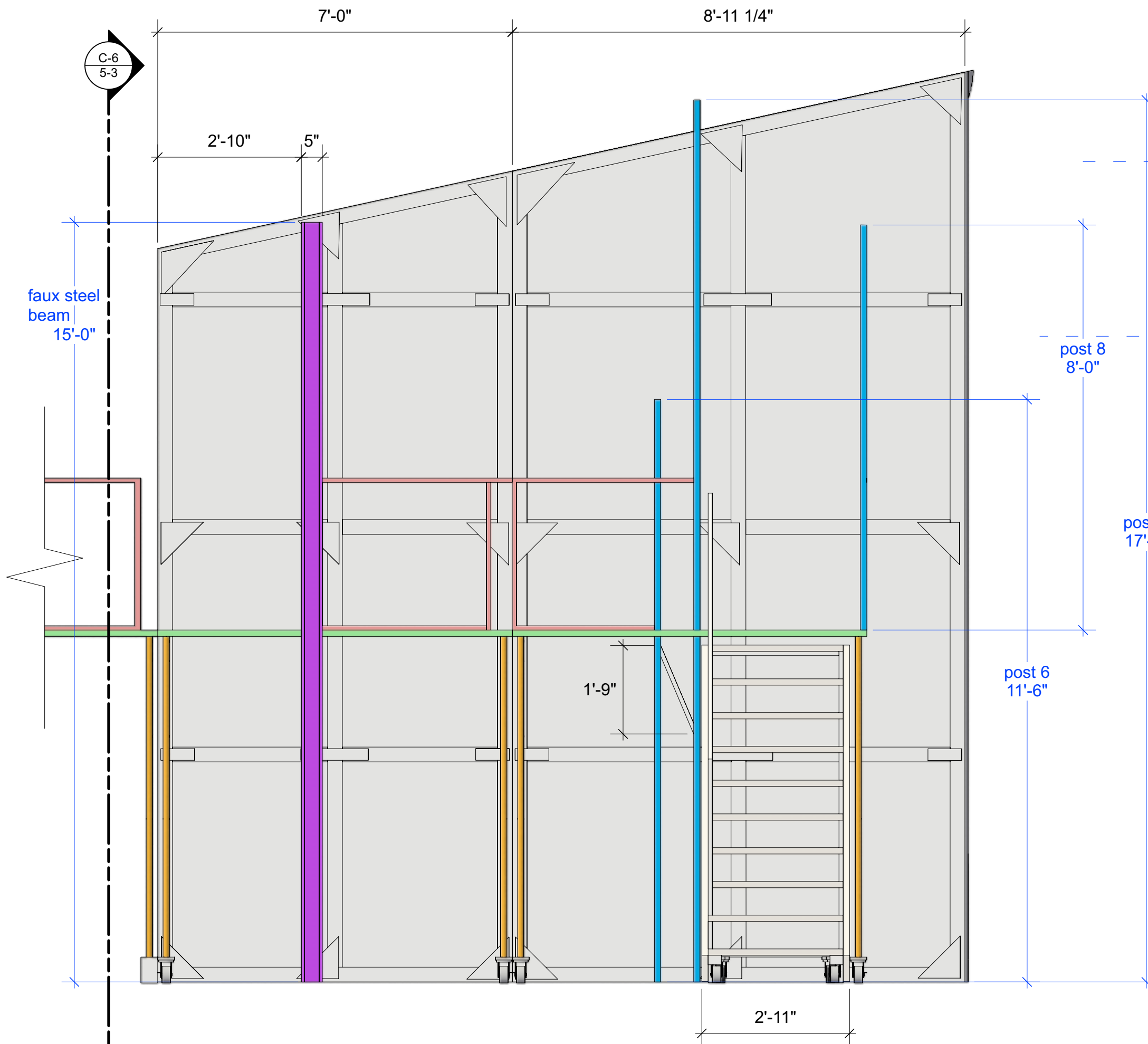
Date: June 10, 2024

S.D. 13829
SCENIC DESIGNER
SIGNATURE *[Signature]*

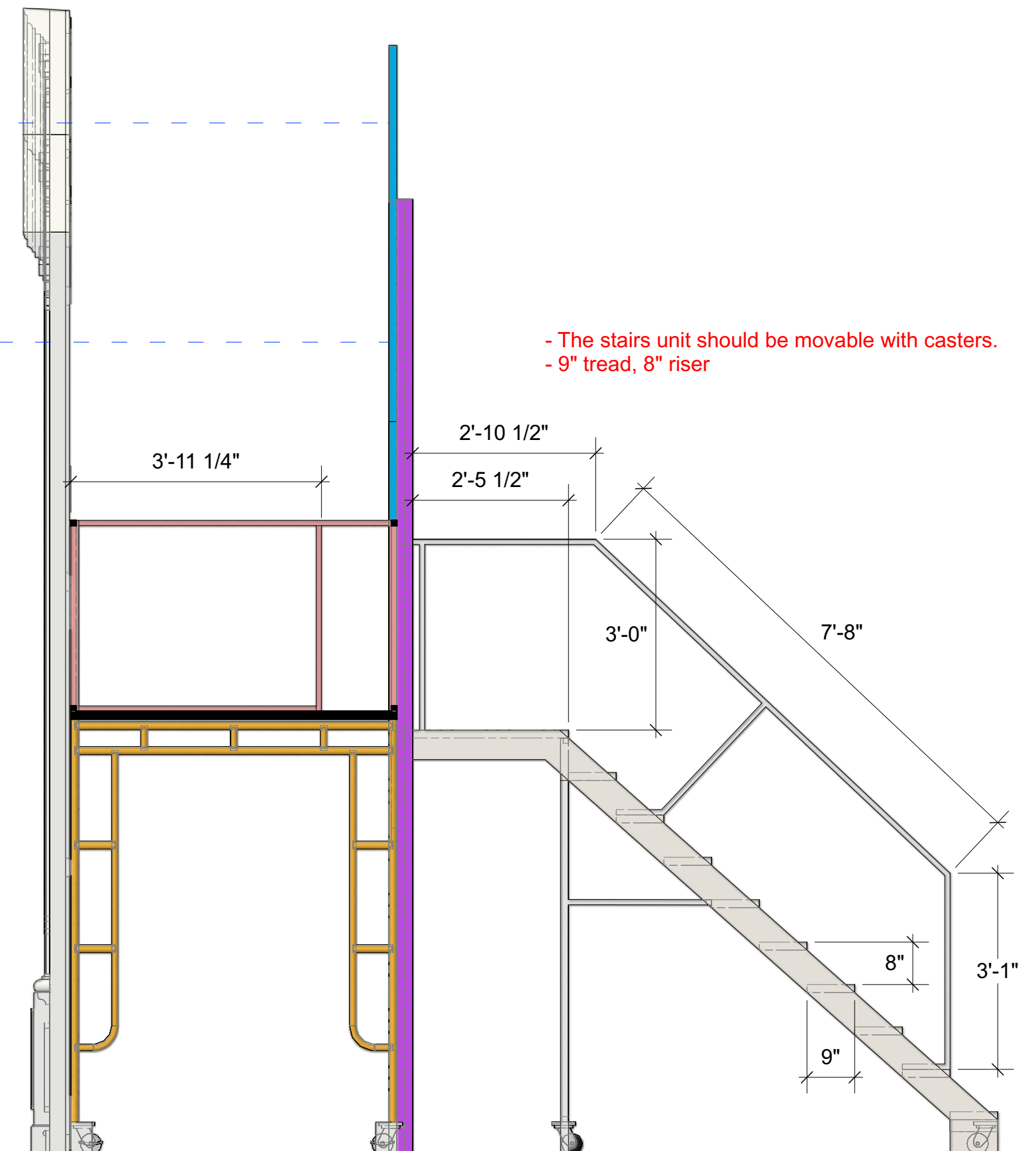
NOTE:

- Ensure the dimensions and placement of the posts in blue are accurate.
- The posts, handrails, stairs built from steel materials are left unpainted.

C-5 Arden unit D & E: front



C-6 Arden unit D & E: section



As You Like It
by William Shakespeare

Directing: Sara Holdren
Costume: Elivia Blitz
Lighting: Jen Rock
Sound: Kate Marvin
Prop: Leah Jordan
Puppet: Greg Corbino
Technical Directing: Jeff Szymanowski
Scenic: Inseung Park
Drafting: Inseung Park

Nortre Dame Shakespeare Festival

Arden unit D & E

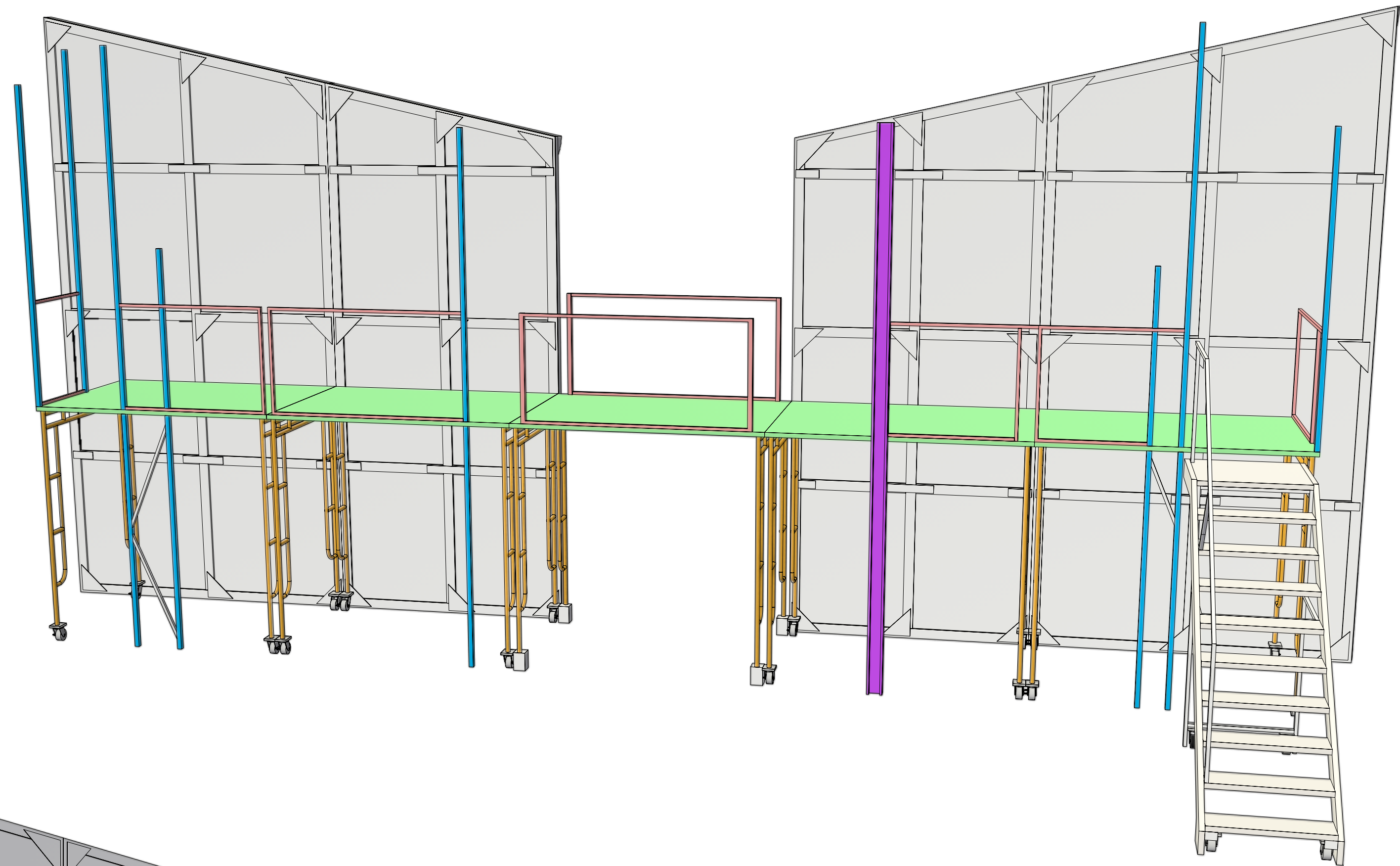
Scale: 1/2"=1'-0"

Date: June 10, 2024

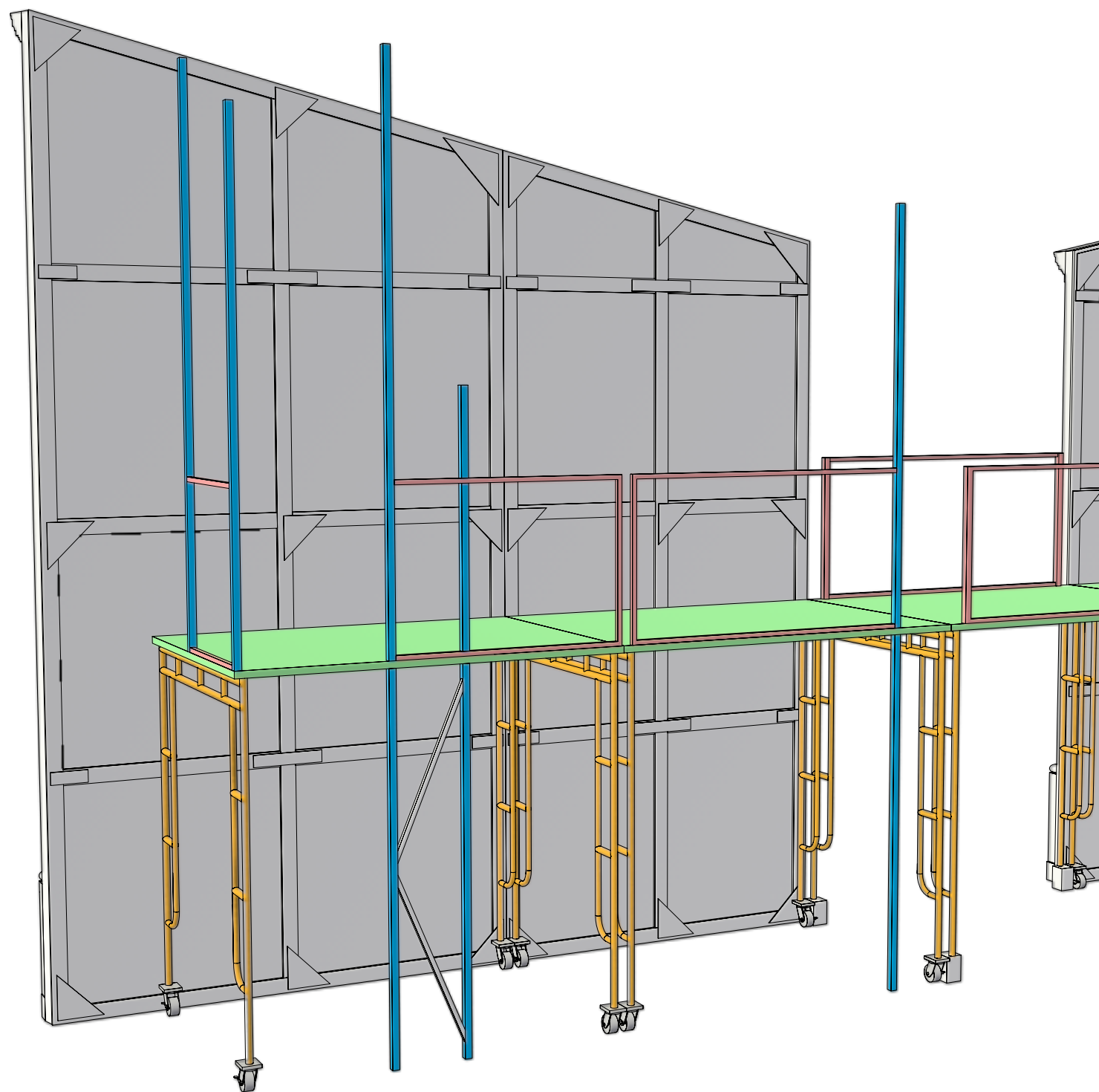


S.D. 13829
SCENIC DESIGNER
SIGNATURE *Inseung Park*

C-7 Arden: perspective



C-8 Arden units A & B: perspective



As You Like It
by William Shakespeare

Directing: Sara Holdren
Costume: Elivia Blitz
Lighting: Jen Rock
Sound: Kate Marvin
Prop: Leah Jordan
Puppet: Greg Corbino
Technical Directing: Jeff Szymanowski
Scenic: Inseung Park
Drafting: Inseung Park

Nortre Dame Shakespeare Festival

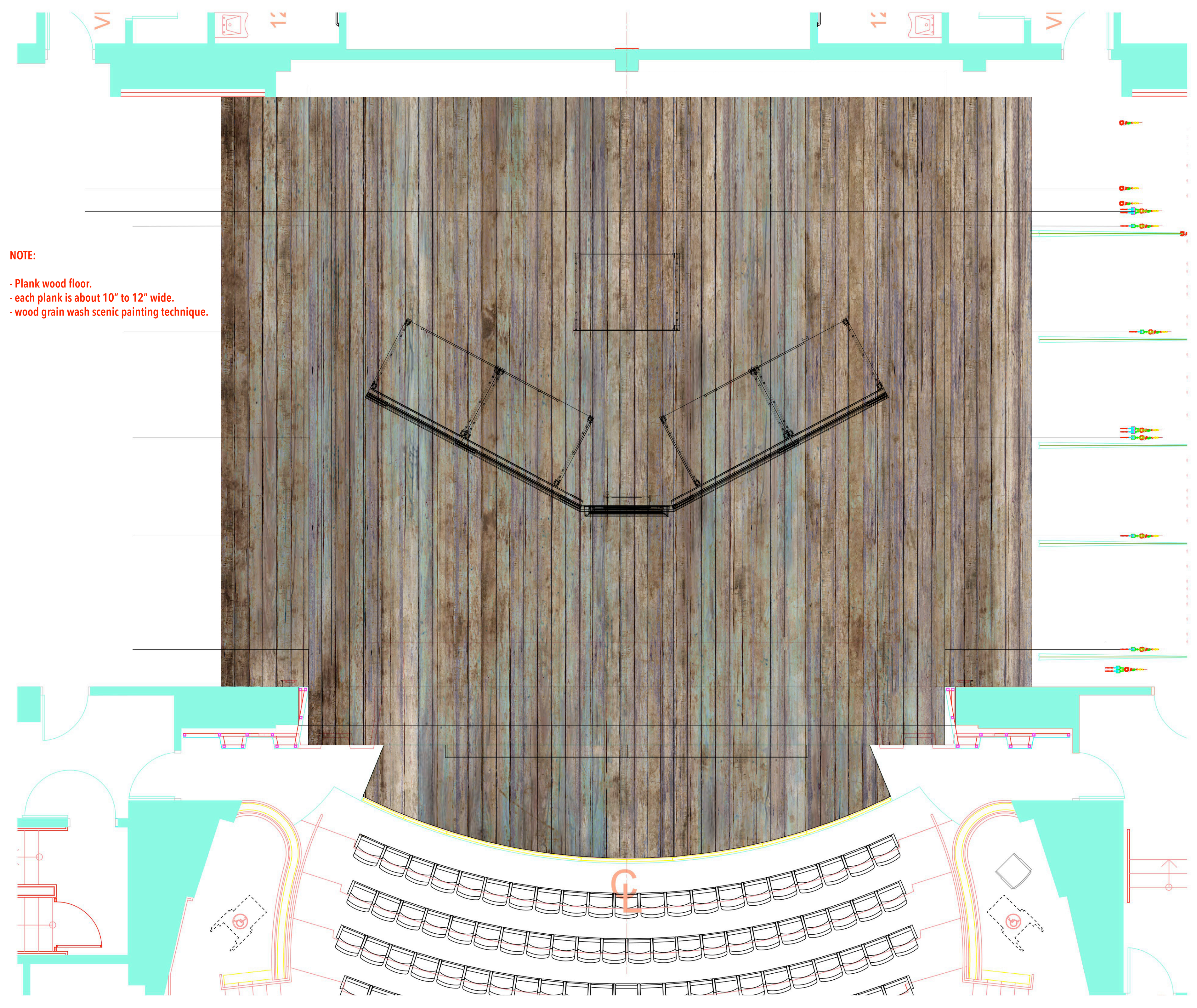
Arden

Scale: N/A

Date: June 10, 2024



S.D. 13829
SCENIC DESIGNER
SIGNATURE *Inseung Park*



NOTE:

- Plank wood floor.
- each plank is about 10" to 12" wide.
- wood grain wash scenic painting technique.

As You Like It
by William Shakespeare

Directing: Sara Holdren
Costume: Elivia Blitz
Lighting: Jen Rock
Sound: Kate Marvin
Prop: Leah Jordan
Puppet: Greg Corbino
Technical Directing: Jeff Szymanowski
Scenic: Inseung Park
Drafting: Inseung Park

Nortre Dame Shakespeare Festival

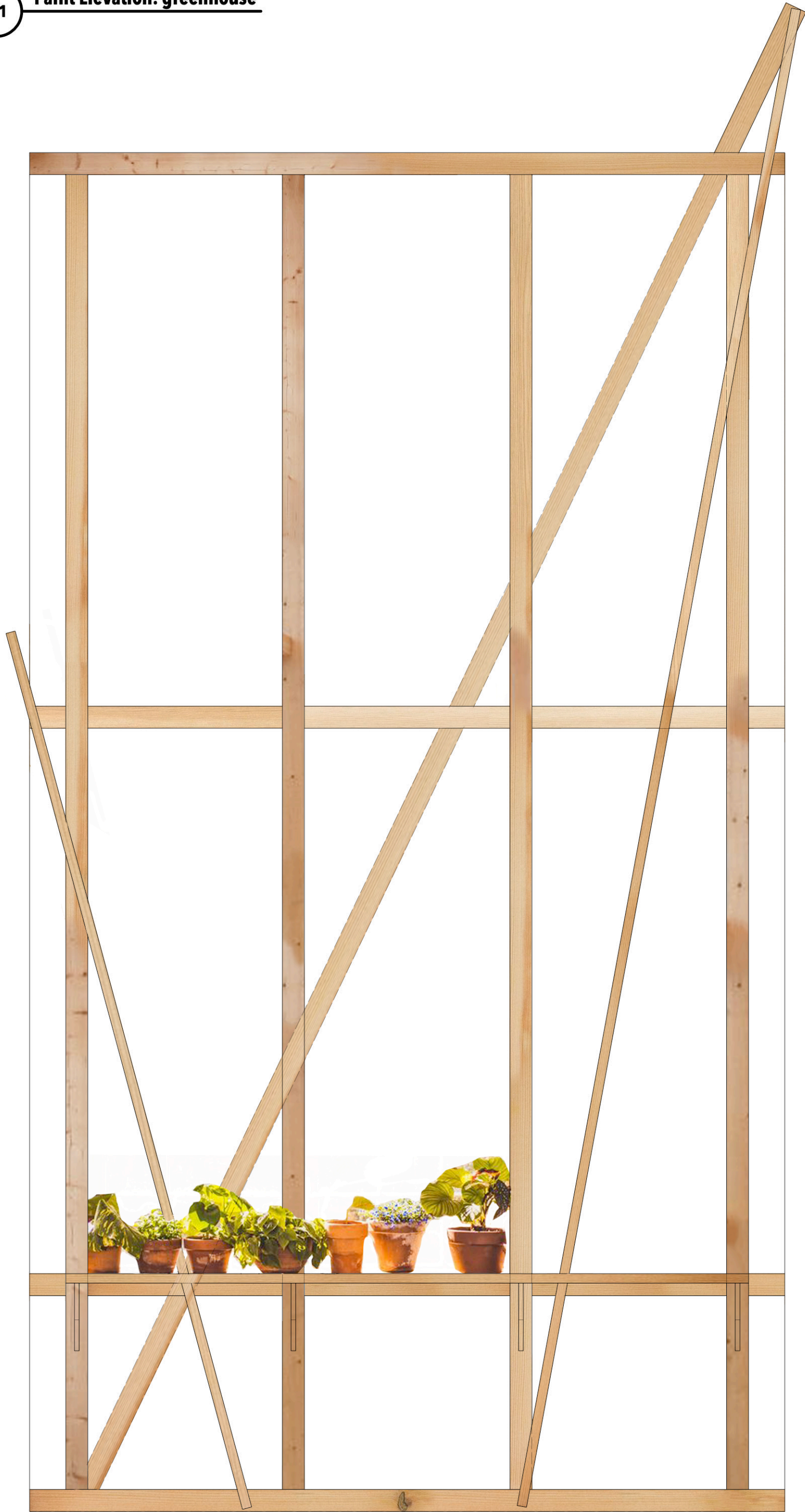
Paint Elevation:
floor

Scale: 1/4" = 1'-0"

Date: June 10, 2024


S.D. 13829
SCENIC DESIGNER
SIGNATURE 

A-1 Paint Elevation: greenhouse



- NOTE:**
- The greenhouse unit is left with the raw material unpainted, as shown in the reference.
 - Erase all the labels on the materials.
 - The greenhouse film is frosted white and translucent.
 - Use gobo lighting to create shadows of the plants on the plastic surface behind them. See references.
 - Decorate the shelf with some plants and vases, using a green color scheme rather than a colorful one.



As You Like It
by William Shakespeare

Directing: Sara Holdren
Costume: Elivia Blitz
Lighting: Jen Rock
Sound: Kate Marvin
Prop: Leah Jordan
Puppet: Greg Corbino
Technical Directing: Jeff Szymanowski
Scenic: Inseung Park
Drafting: Inseung Park

Nortre Dame Shakespeare Festival

Paint Elevation: Greenhouse

Scale: 3/4"=1'-0"

Date: June 10, 2024


S.D. 13829
SCENIC DESIGNER
SIGNATURE *Inseung Park*

- NOTE:**
- Court SL is the mirror image of court SR.
 - The crown molding, chair rails, and pediment frame are darker umber wood.
 - Duke's portrait should be incorporated with the cast for Duke and his costume.
 - Pilaster fluting, capitals, and trims on the wall and door are antique gold.
 - The frame of Duke's portrait on the center door unit is antique gold.



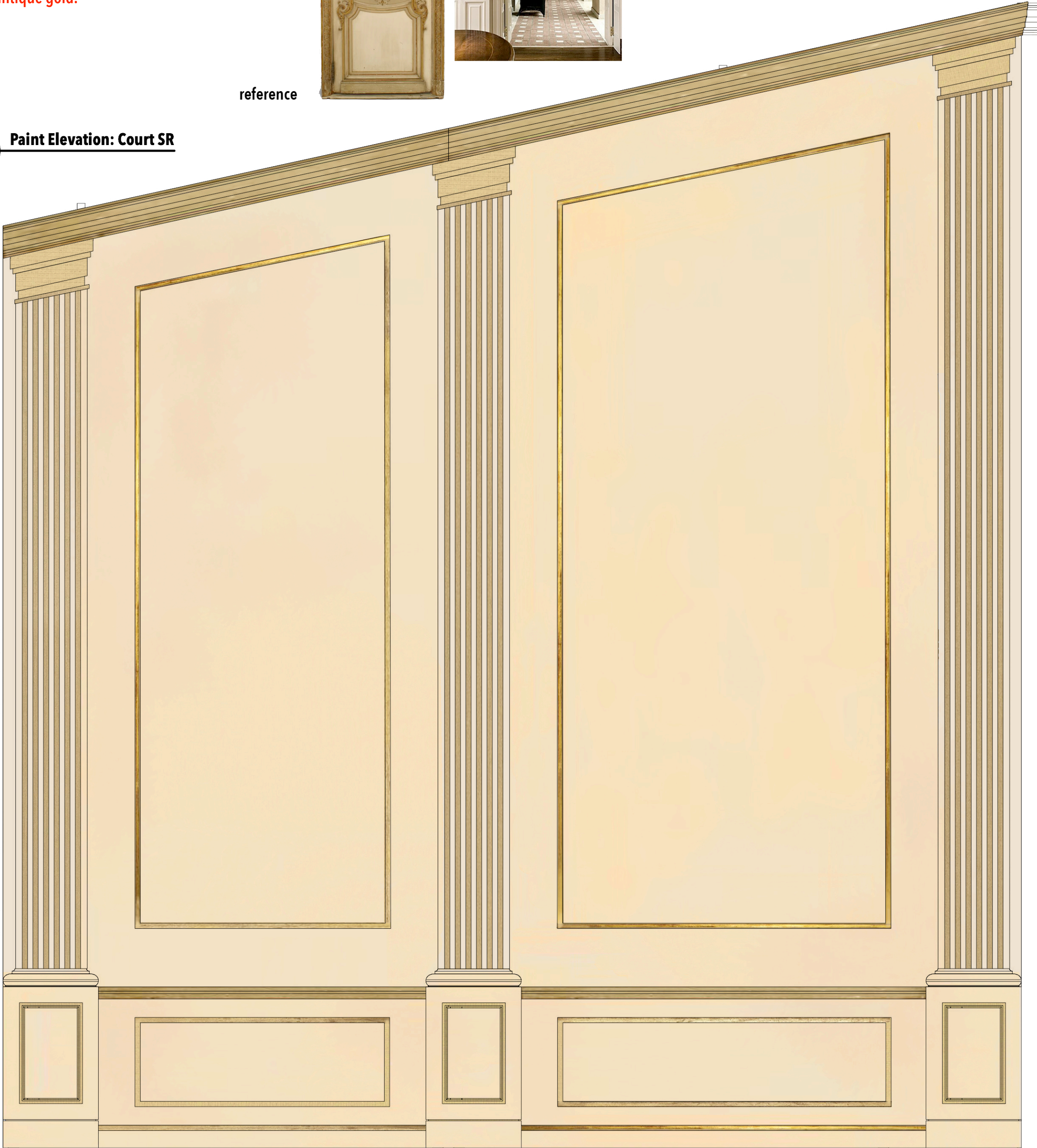
valspar color swatch

Honey Moon 8003-22A
base coat

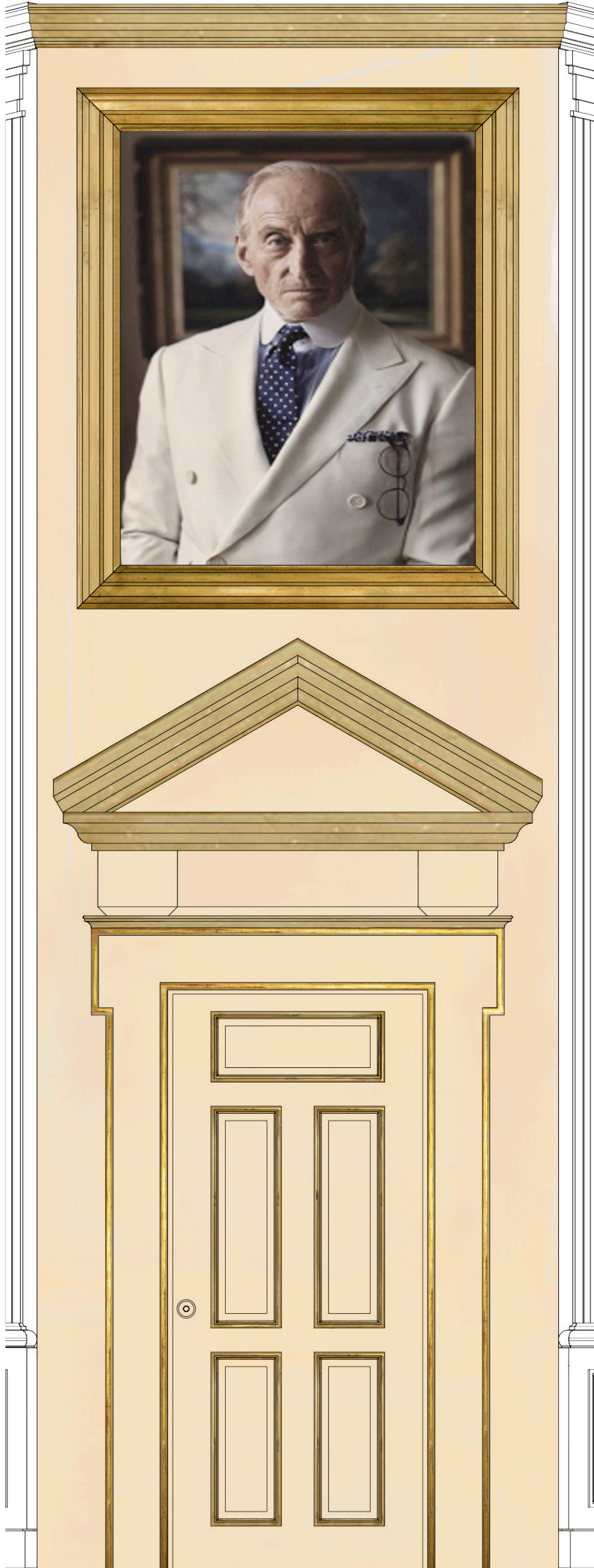
valspar color swatch

Almond cream 3001-4C
aging

B-1 Paint Elevation: Court SR



B-2 Paint Elevation: Court center



As You Like It
by William Shakespeare

Directing: Sara Holdren
Costume: Elivia Blitz
Lighting: Jen Rock
Sound: Kate Marvin
Prop: Leah Jordan
Puppet: Greg Corbino
Technical Directing: Jeff Szymanowski
Scenic: Inseung Park
Drafting: Inseung Park

Nortre Dame Shakespeare Festival

Paint Elevation: Court

Scale: 3/4" = 1'-0"

Date: June 10, 2024


S.D. 13829
SCENIC DESIGNER
SIGNATURE 

NOTE:

- The Broadway flats (NOT hollywood flat) should look aged. See reference (Broadway flat without arts).
- Leave the labels on the materials.
- Paint eyes, bird, sun, tree, poppy, woodcutter, deers on the flat.
- then, print posters and add ripped paper posters and create the effect of poster layers peeling off with papers.
- All posters are 36"x24" in size.



Broadway Flat without arts



Posters:
Three posters are 36"x24" in size.



As You Like It
by William Shakespeare

Directing: Sara Holdren
Costume: Elivia Blitz
Lighting: Jen Rock
Sound: Kate Marvin
Prop: Leah Jordan
Puppet: Greg Corbino
Technical Directing: Jeff Szymanowski
Scenic: Inseung Park
Drafting: Inseung Park

Nortre Dame Shakespeare Festival

Paint Elevation: Arden SR

Scale: 3/4" = 1'-0"

Date: June 10, 2024


S.D. 13829
SCENIC DESIGNER
SIGNATURE 

- NOTE:**
- The broadway flats (NOT hollywood flat) should look aged.
 - Paint tree, birds, moond, orange lady, some graffiti art on the flat.
 - Then, print posters, add ripped paper posters and create the effect of poster layers peeling off with papers.
 - All posters are 36"x24".

Posters:

Five posters printed and applied on the flat.



As You Like It
by William Shakespeare

Directing: Sara Holdren
Costume: Elivia Blitz
Lighting: Jen Rock
Sound: Kate Marvin
Prop: Leah Jordan
Puppet: Greg Corbino
Technical Directing: Jeff Szymanowski
Scenic: Inseung Park
Drafting: Inseung Park

Nortre Dame Shakespeare Festival

Paint Elevation: Arden SL

Scale: 3/4"=1'-0"

Date: June 10, 2024


S.D. 13829
SCENIC DESIGNER
SIGNATURE 