

Sweeney Todd by
Stephen Sondheim, Hugh
Wheeler

Directing: Tim L'ecuyer
Music: Matthew Stephen
Choreography: Zackery Betty-Neagle
Costume: D. W.
Lighting: Tyson Miller
Sound: Thom Beaulieu
Prop: Nick Winkler
Tech Directing: Matthew Hutchens
Scenic: Inseung Park
Drafting: Inseung Park

**The Winnepesaukee
Playhouse**

Ground plan

Scale: 1/4" = 1'-0"

Date: July 24, 2023



S.D. 13829
SCENIC DESIGNER

SIGNATURE *[Signature]*

**Sweeney Todd by
Stephen Sondheim, Hugh
Wheeler**

Directing: Tim L'ecuyer
Music: Matthew Stephen
Choreography: Zackery Betty-Neagle
Costume: D. W.
Lighting: Tyson Miller
Sound: Thom Beaulieu
Prop: Nick Winkler
Tech Directing: Matthew Hutchens
Scenic: Inseung Park
Drafting: Inseung Park

**The Winnepesaukee
Playhouse**

Section

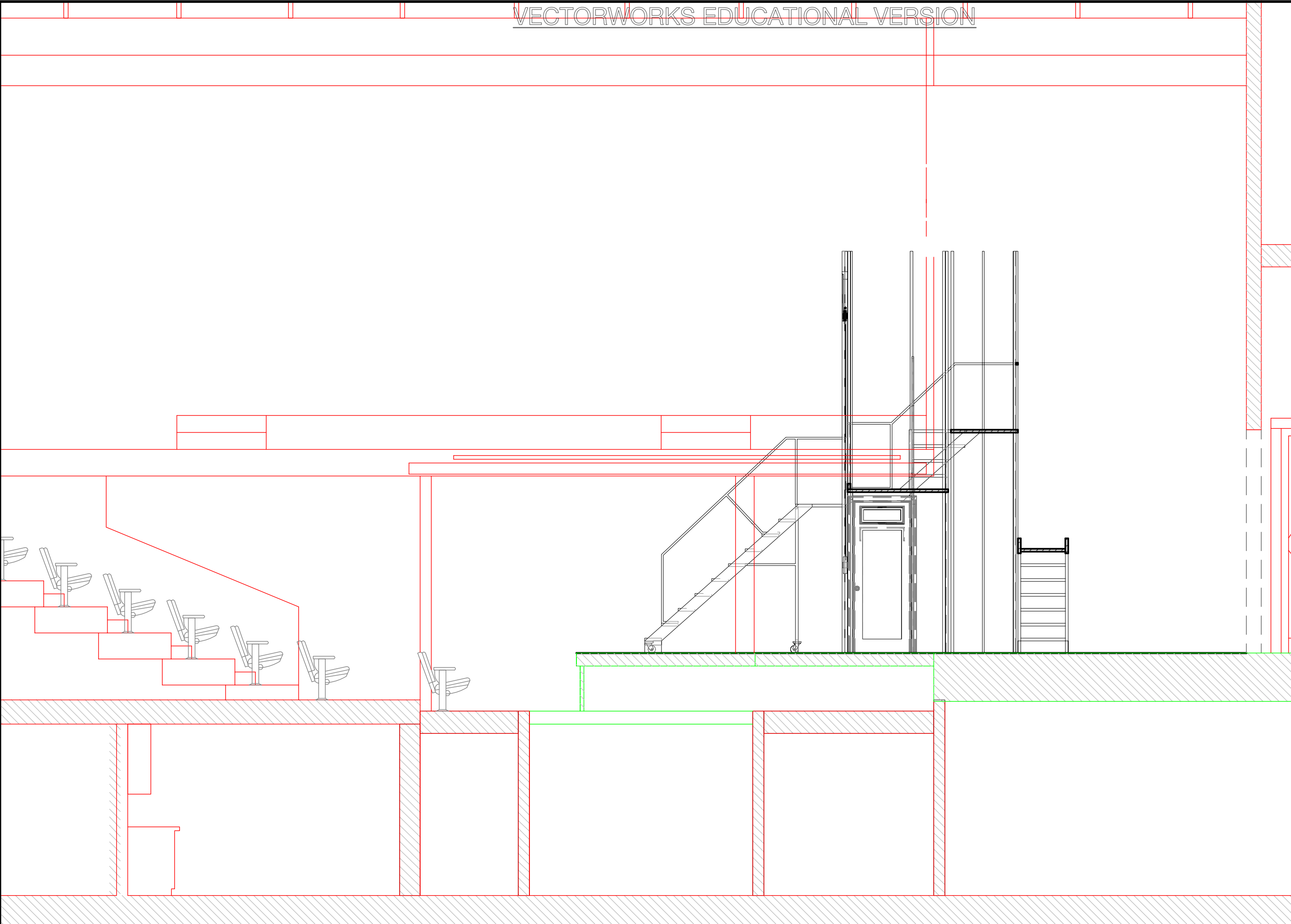
Scale: 1/4"=1'-0"

Date: July 24, 2023

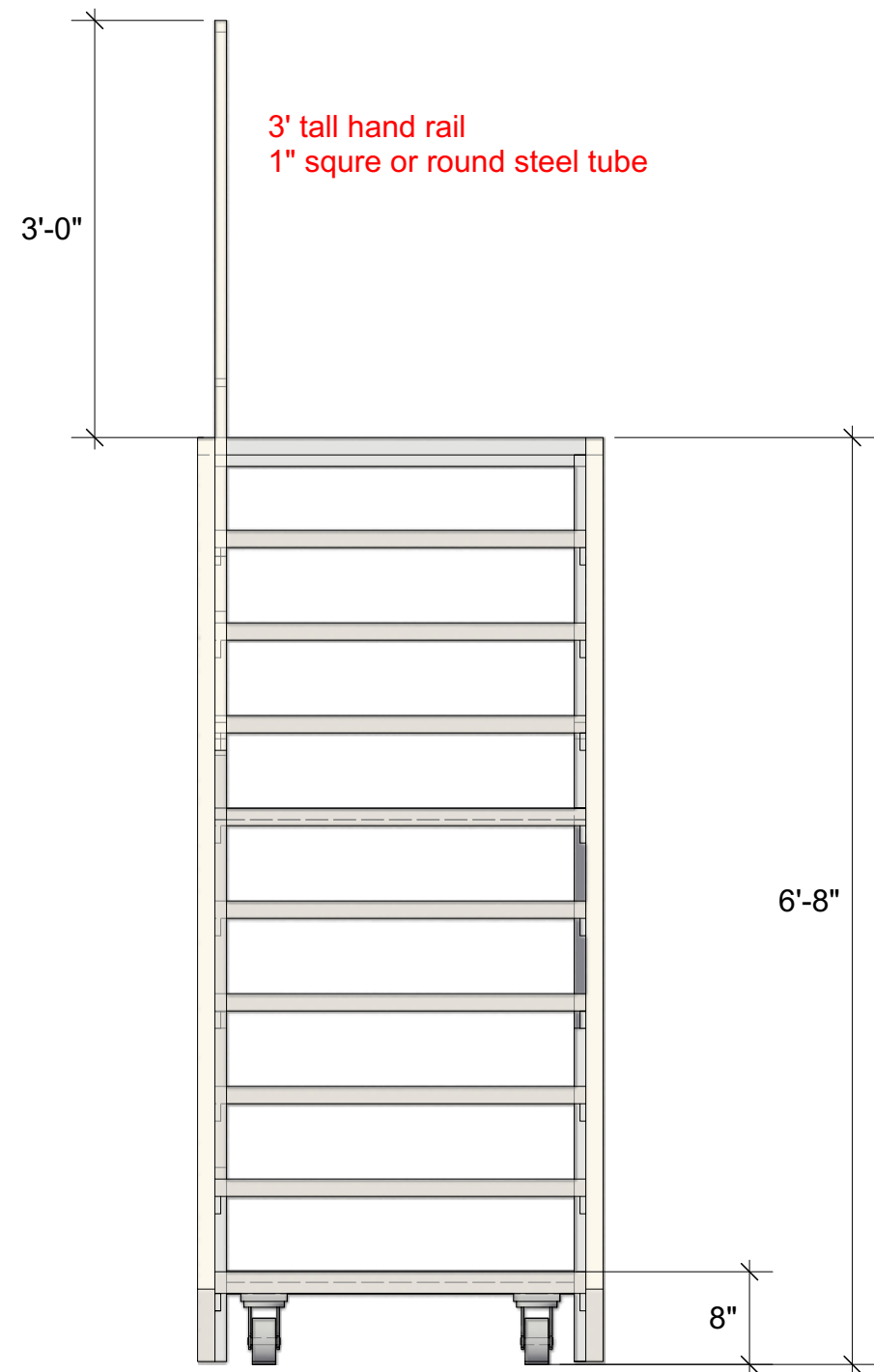


S.D. 13829
SCENIC DESIGNER

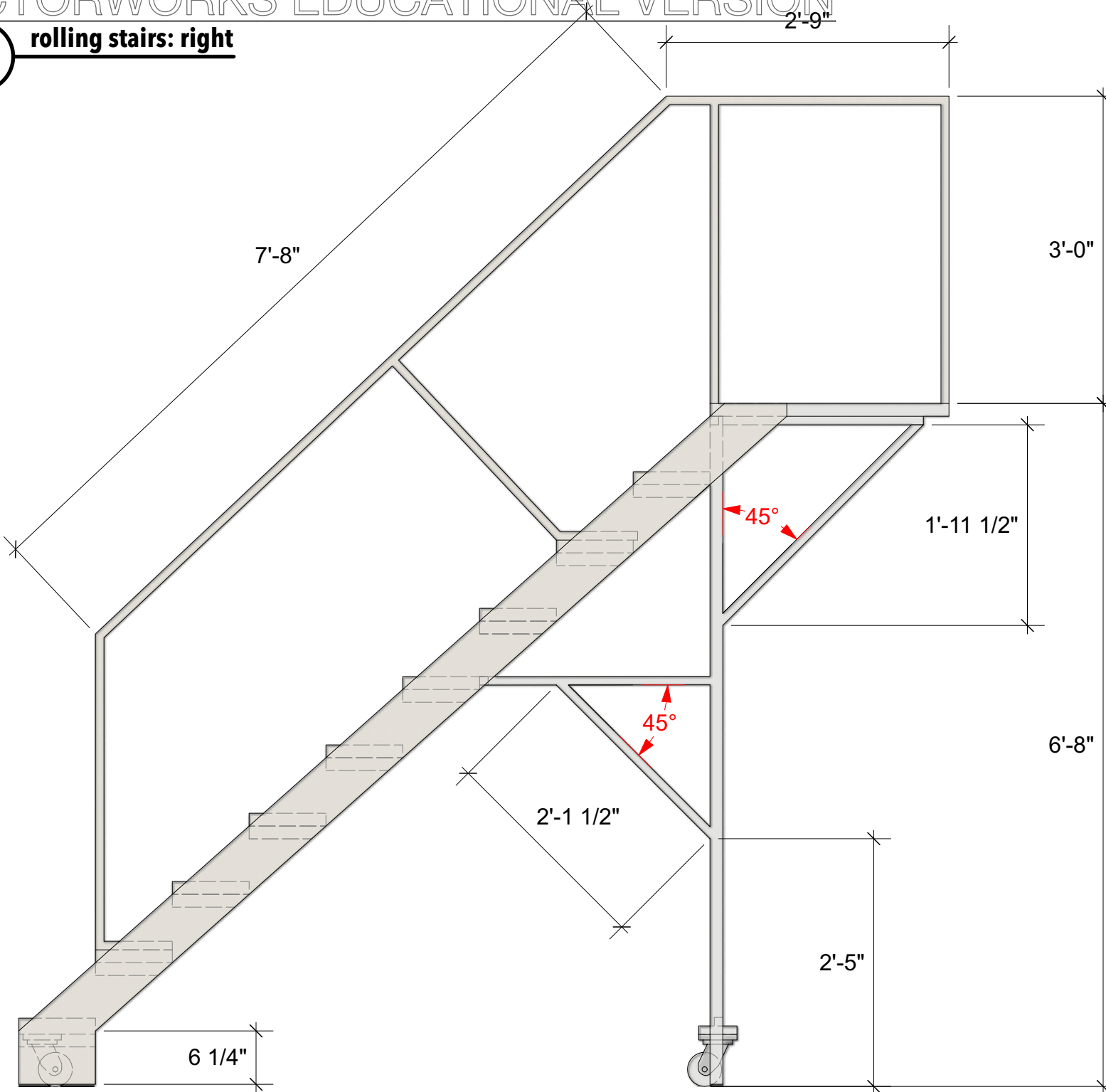
SIGNATURE *Inseung Park*



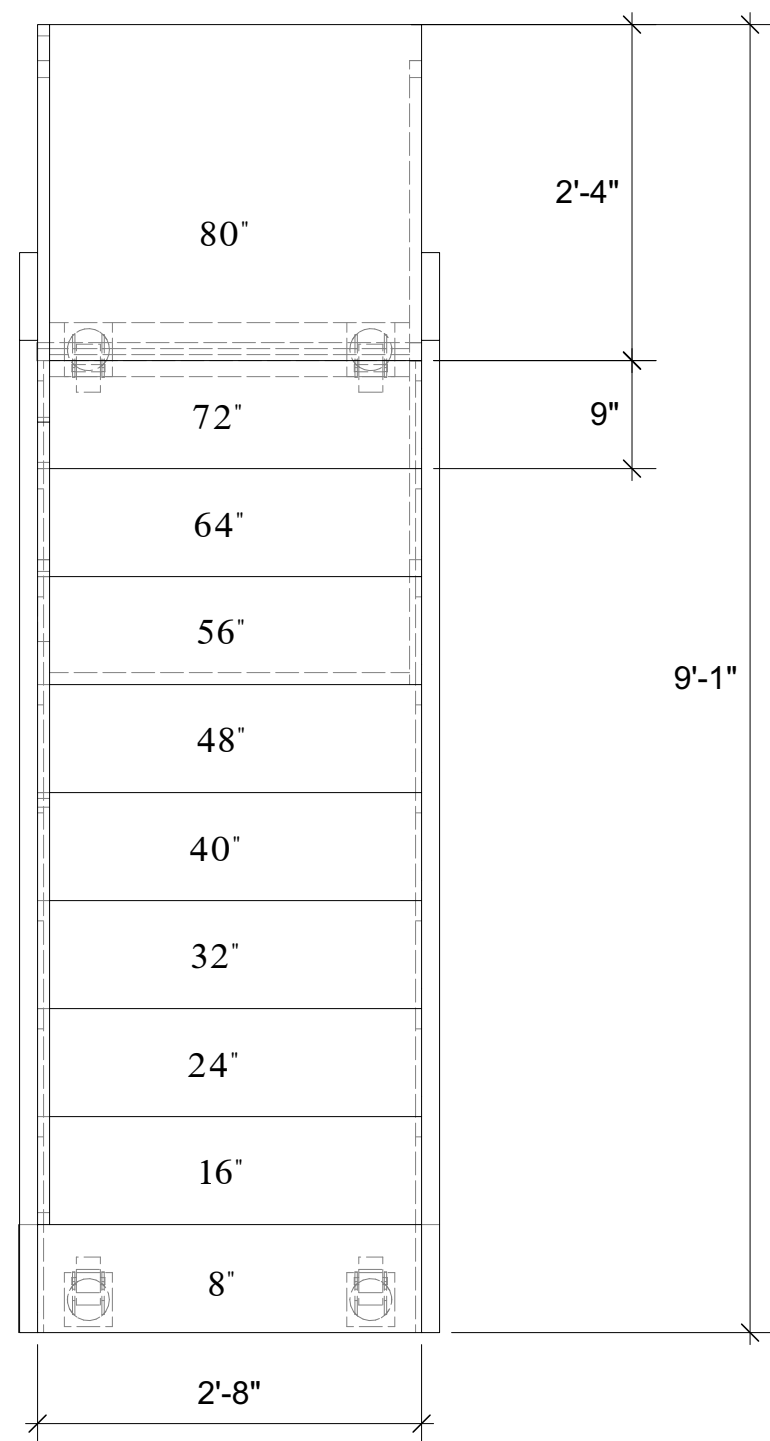
A-1 rolling stairs: front



A-3 rolling stairs: right



A-2 rolling stairs: plan



A-4 rolling stairs: perspective



- NOTE:**
- the stairs unit is 8" rise, 9" tread
 - this unit is rolling around the stage: use the swivel casters
 - the hand rail is only one side
 - use small dollies that hold front and rear: simple and clean look aesthetically
 - as less bracing as possible

Sweeney Todd by Stephen Sondheim, Hugh Wheeler

Directing: Tim L'ecuyer
 Music: Matthew Stephen
 Choreography: Zackery Betty-Neagle
 Costume: D. W.
 Lighting: Tyson Miller
 Sound: Thom Beaulieu
 Prop: Nick Winkler
 Tech Directing: Matthew Hutchens
 Scenic: Inseung Park
 Drafting: Inseung Park

The Winnepesaukee Playhouse

rolling stairs

Scale:

3/4" = 1'-0"

Date:

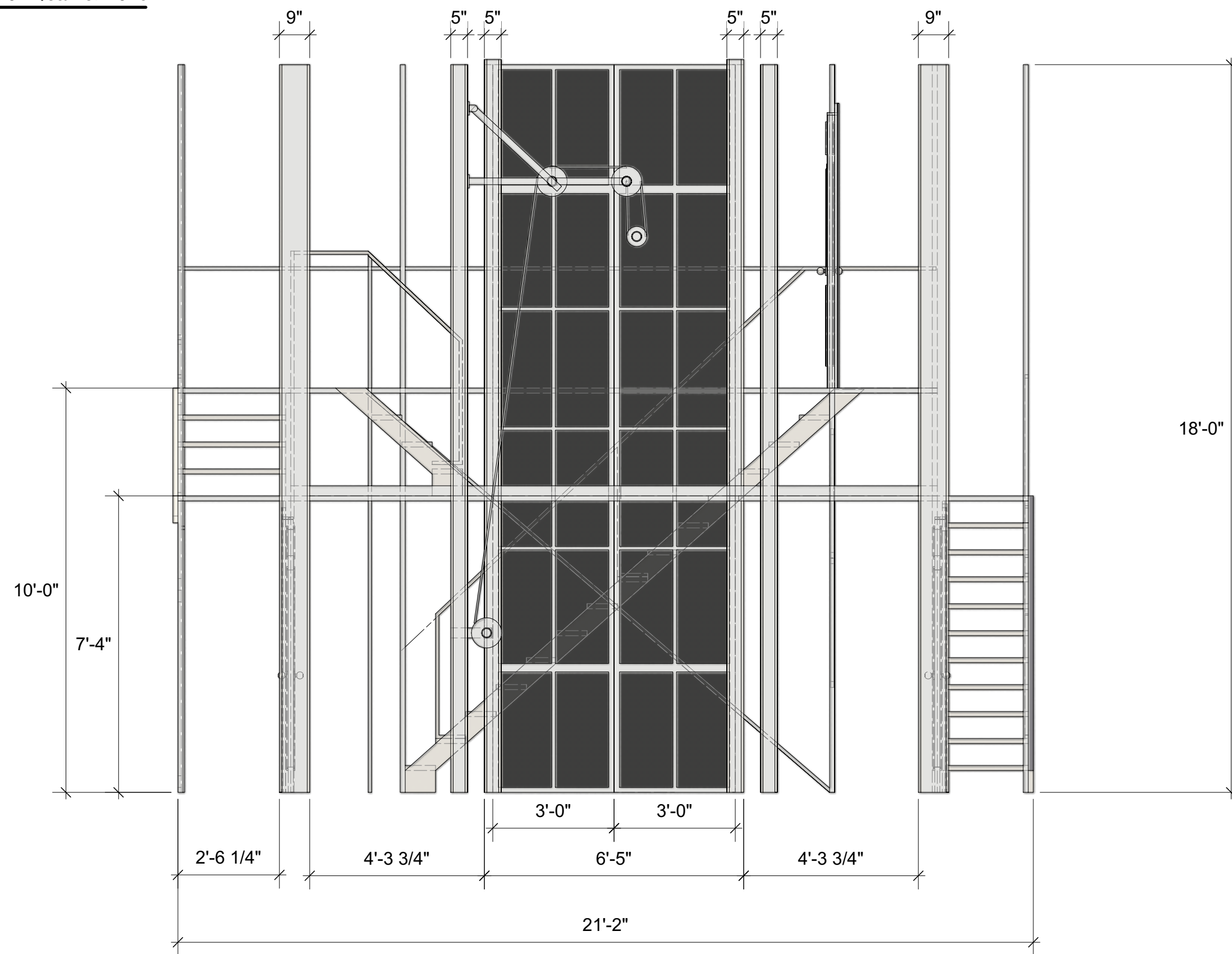
July 24, 2023



S.D. 13829
 SCENIC DESIGNER

SIGNATURE *[Signature]*

B-1 platform/stairs: front



NOTE:

- All stairs are the same style: 8" riser, 9" tread, see drawing #3
- Stairs can be modified with the inventory as necessary
- The sliding window should be sliding side by side - find out the best way to make it function. It can be manually moved by the actors or pulley traveler track system
- There are 12 posts to buttress the levels, 1 1/2" square or round tube
- add more if necessary but be as simple as possible

**Sweeney Todd by
Stephen Sondheim, Hugh
Wheeler**

Directing: Tim L'ecuyer
Music: Matthew Stephen
Choreography: Zackery Betty-Neagle
Costume: D. W.
Lighting: Tyson Miller
Sound: Thom Beaulieu
Prop: Nick Winkler
Tech Directing: Matthew Hutchens
Scenic: Inseung Park
Drafting: Inseung Park

**The Winnepesaukee
Playhouse**

platforms/stairs

Scale:

3/8"=1'-0"

Date:

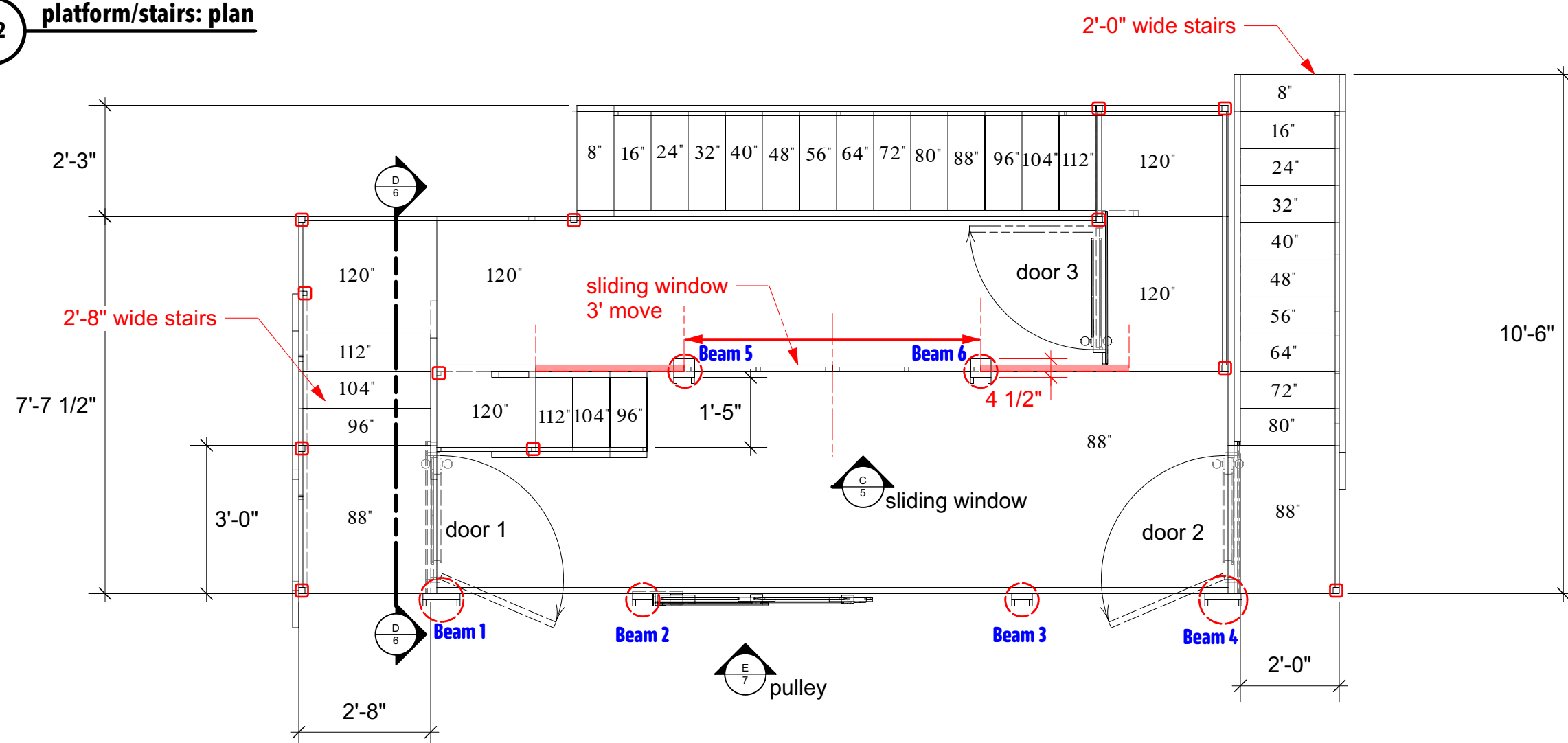
July 24, 2023



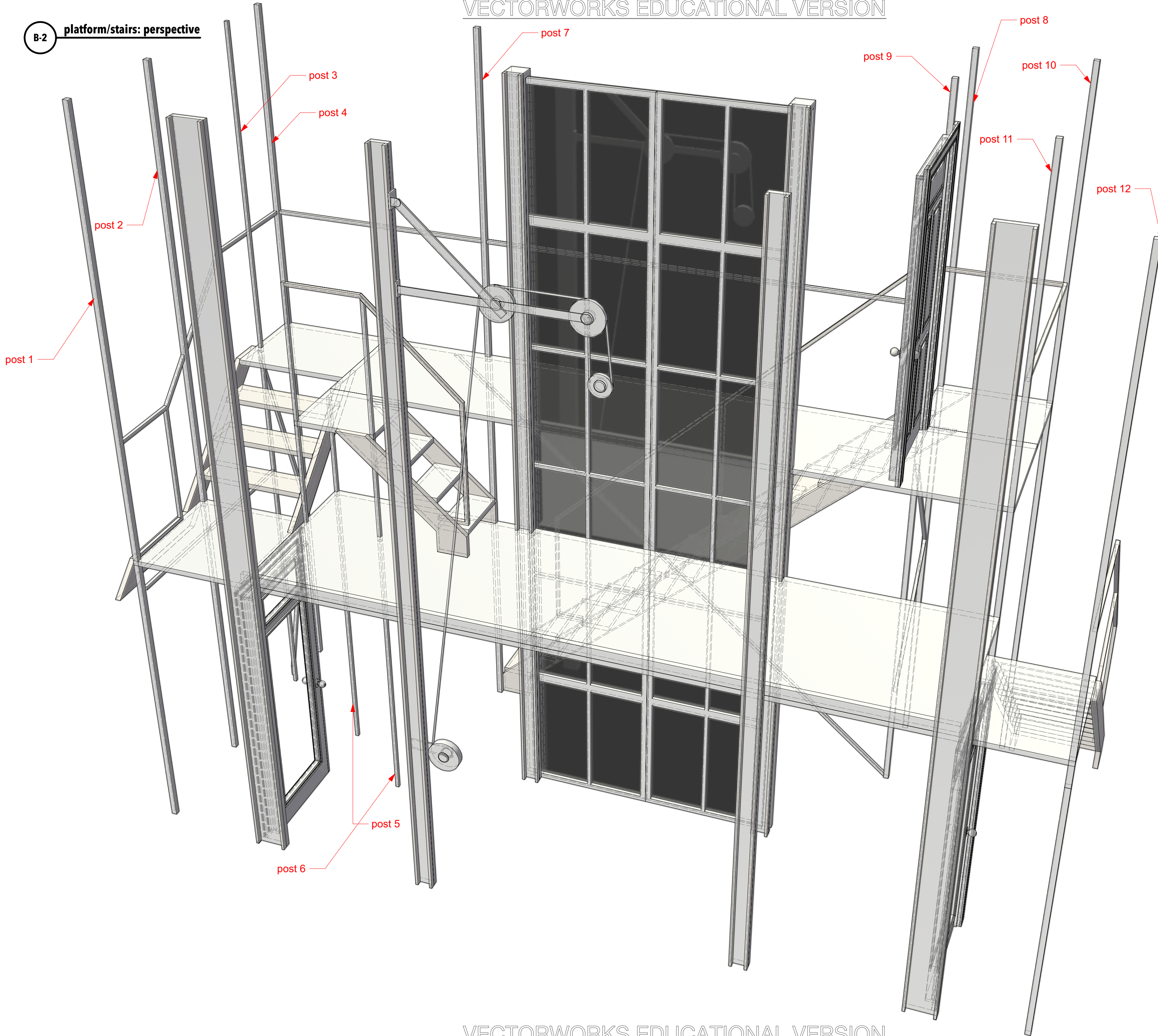
S.D. 13829
SCENIC DESIGNER

SIGNATURE *[Signature]*

B-2 platform/stairs: plan



B-2 platform/stairs: perspective



Sweeney Todd by
Stephen Sondheim, Hugh
Wheeler

Directing: Tim L'ecuyer
Music: Matthew Stephen
Choreography: Zackery Betty-Neagle
Costume: D. W.
Lighting: Tyson Miller
Sound: Thom Beaulieu
Prop: Nick Winkler
Tech Directing: Matthew Hutchens
Scenic: Inseung Park
Drafting: Inseung Park

**The Winnepesaukee
Playhouse**

**platforms/stairs
perspective, post position**

Scale:

3/4" = 1'-0"

Date:

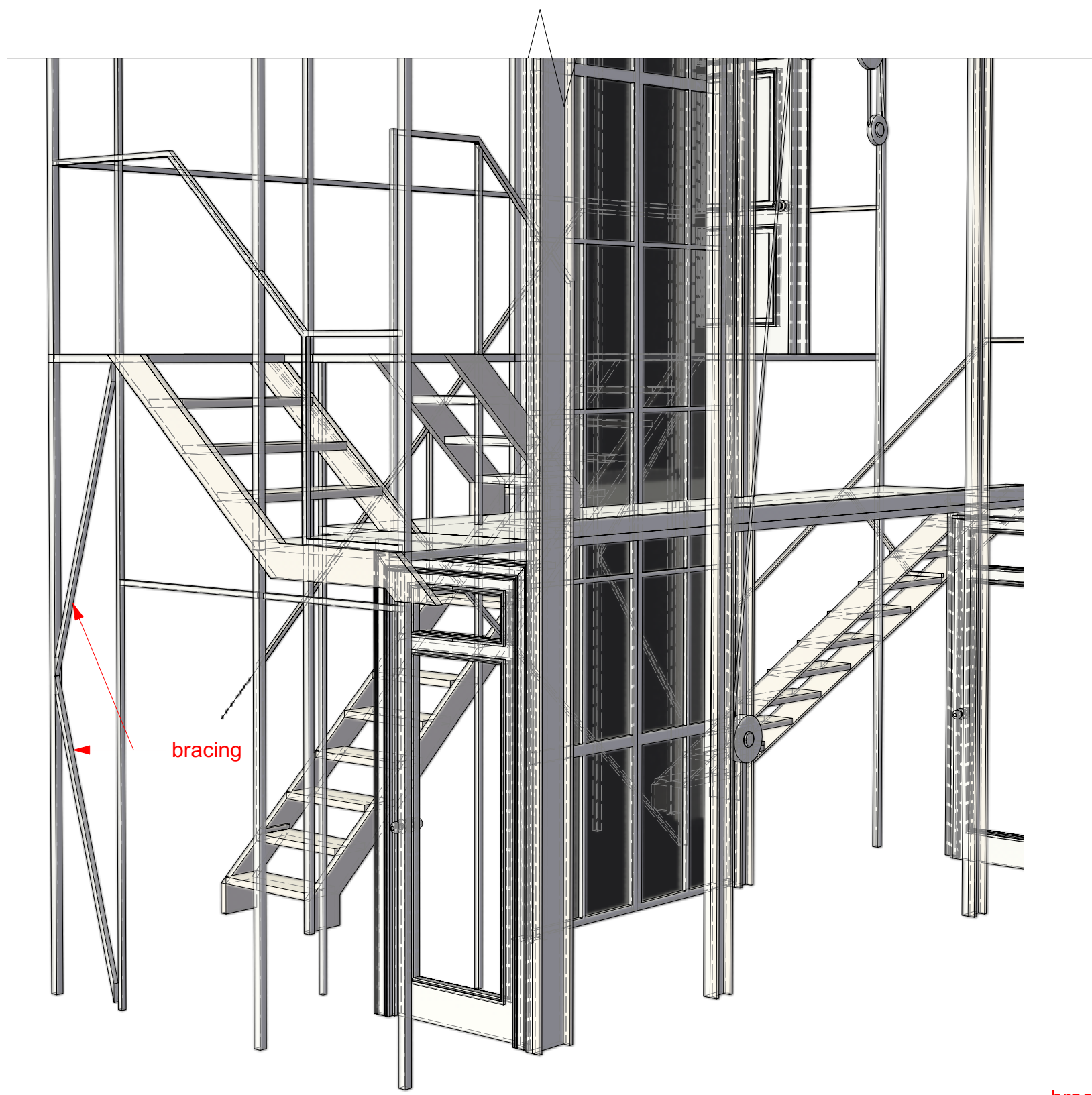
July 24, 2023



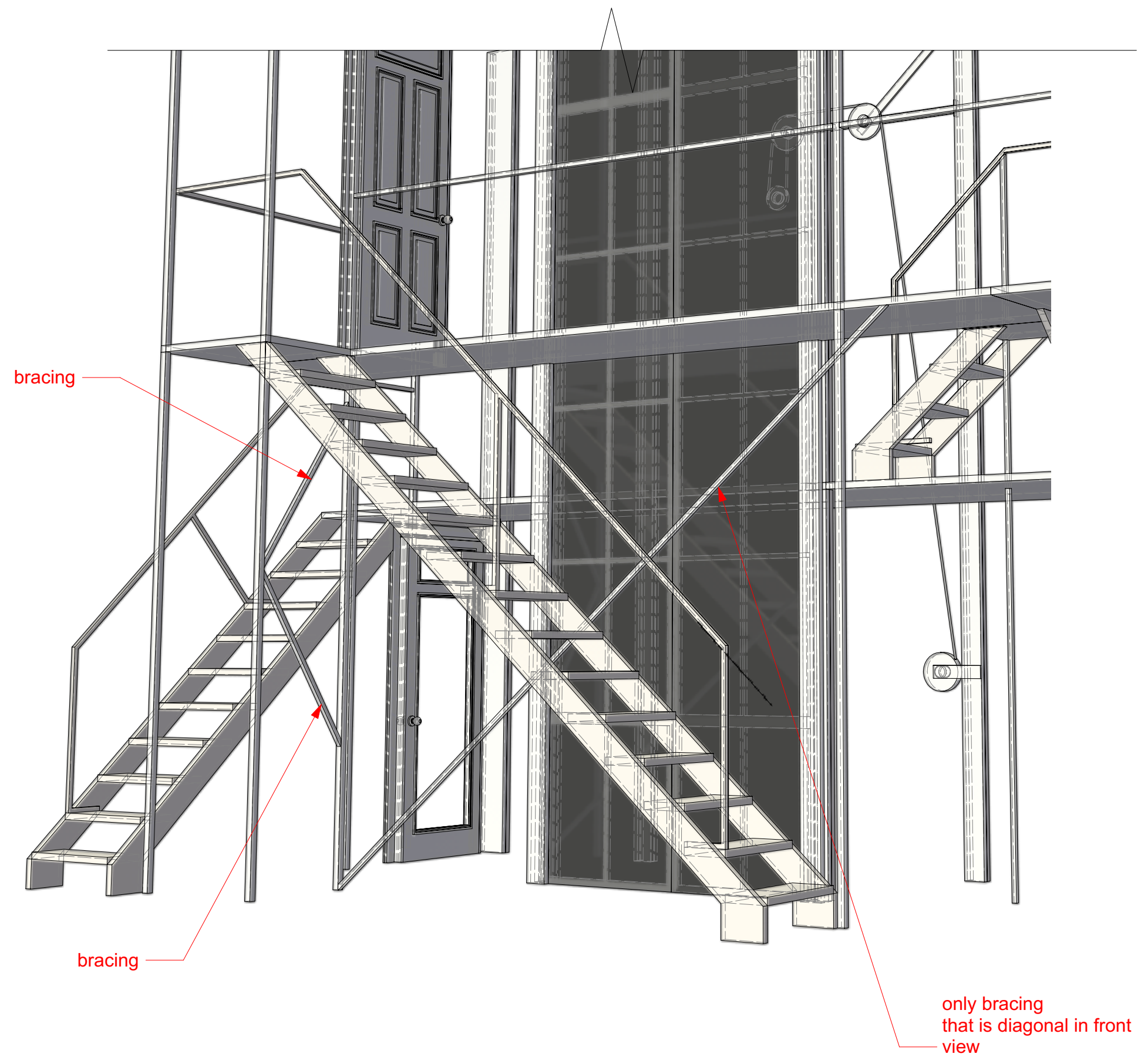
S.D. 13829
SCENIC DESIGNER

SIGNATURE *Inseung Park*

B-3 platform/stairs: perspective



B-4 platform/stairs: perspective



Sweeney Todd by
Stephen Sondeim, Hugh
Wheeler

Directing: Tim L'ecuyer
Music: Matthew Stephen
Choreography: Zackery Betty-Neagle
Costume: D. W.
Lighting: Tyson Miller
Sound: Thom Beaulieu
Prop: Nick Winkler
Tech Directing: Matthew Hutchens
Scenic: Inseung Park
Drafting: Inseung Park

**The Winnepesaukee
Playhouse**

**platforms/stairs
perspective, bracing**

Scale:

1/2"=1'-0"

Date:

July 24, 2023

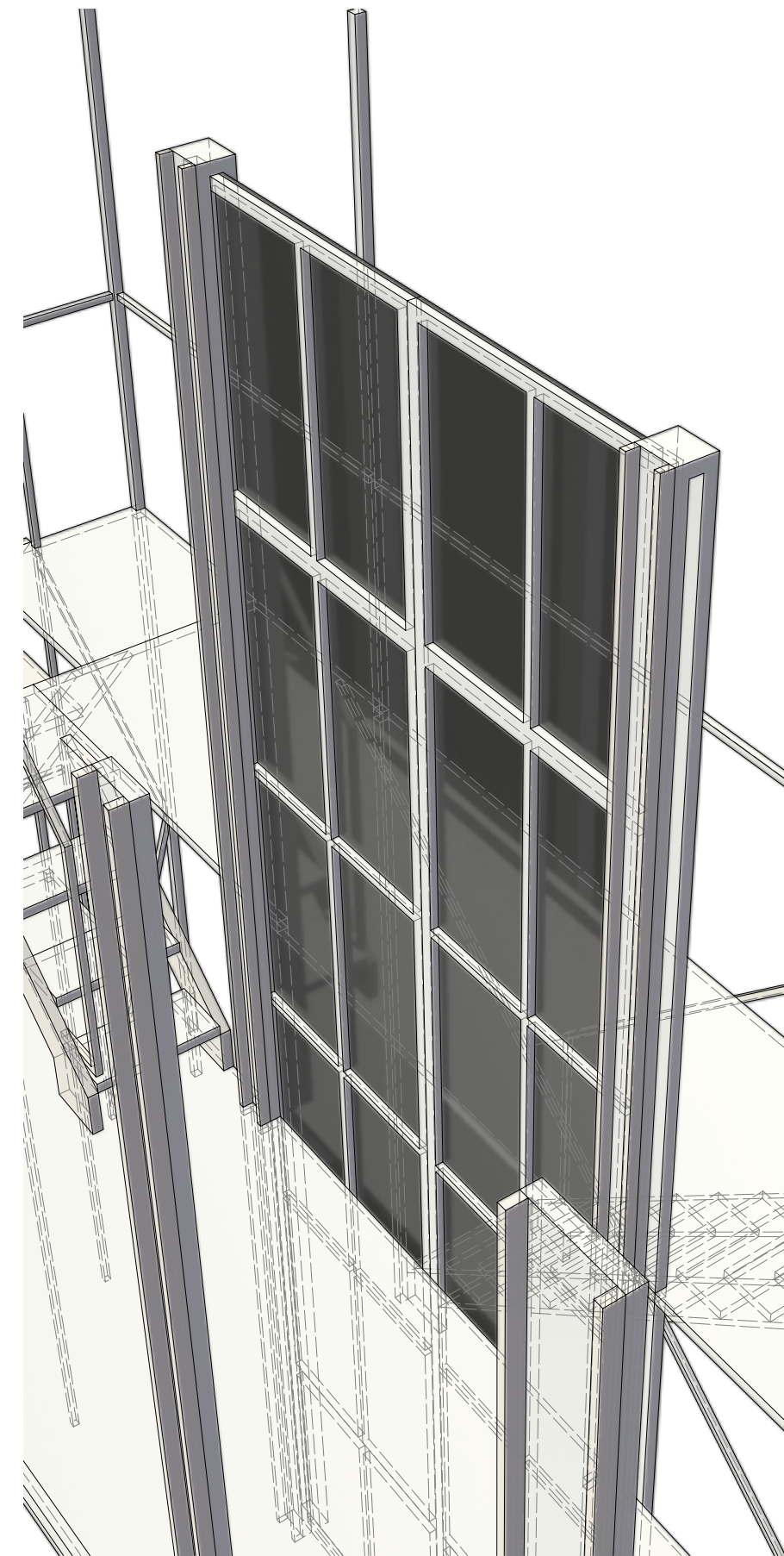
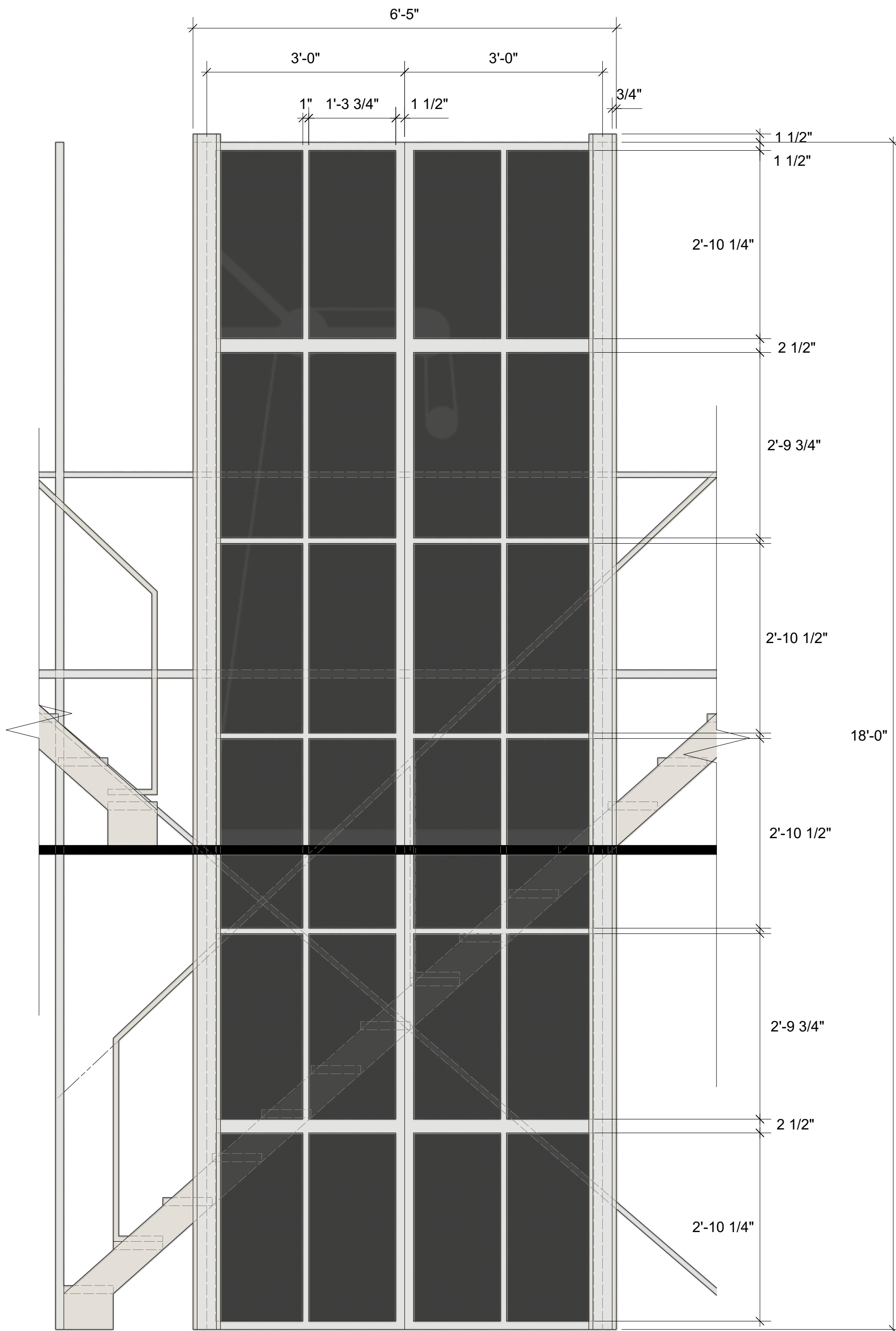


S.D. 13829
SCENIC DESIGNER

SIGNATURE *Inseung Park*

C-1 sliding window: elevation

C-2 sliding window: perspective



NOTE:

- The window is frosted plexi: see the paint elevation, we may use some opaque materials for some areas to save the budget

**Sweeney Todd by
Stephen Sondheim, Hugh
Wheeler**

Directing: Tim L'ecuyer
Music: Matthew Stephen
Choreography: Zackery Betty-Neagle
Costume: D. W.
Lighting: Tyson Miller
Sound: Thom Beaulieu
Prop: Nick Winkler
Tech Directing: Matthew Hutchens
Scenic: Inseung Park
Drafting: Inseung Park

**The Winnepesaukee
Playhouse**

sliding window

Scale:

3/4" = 1'-0"

Date:

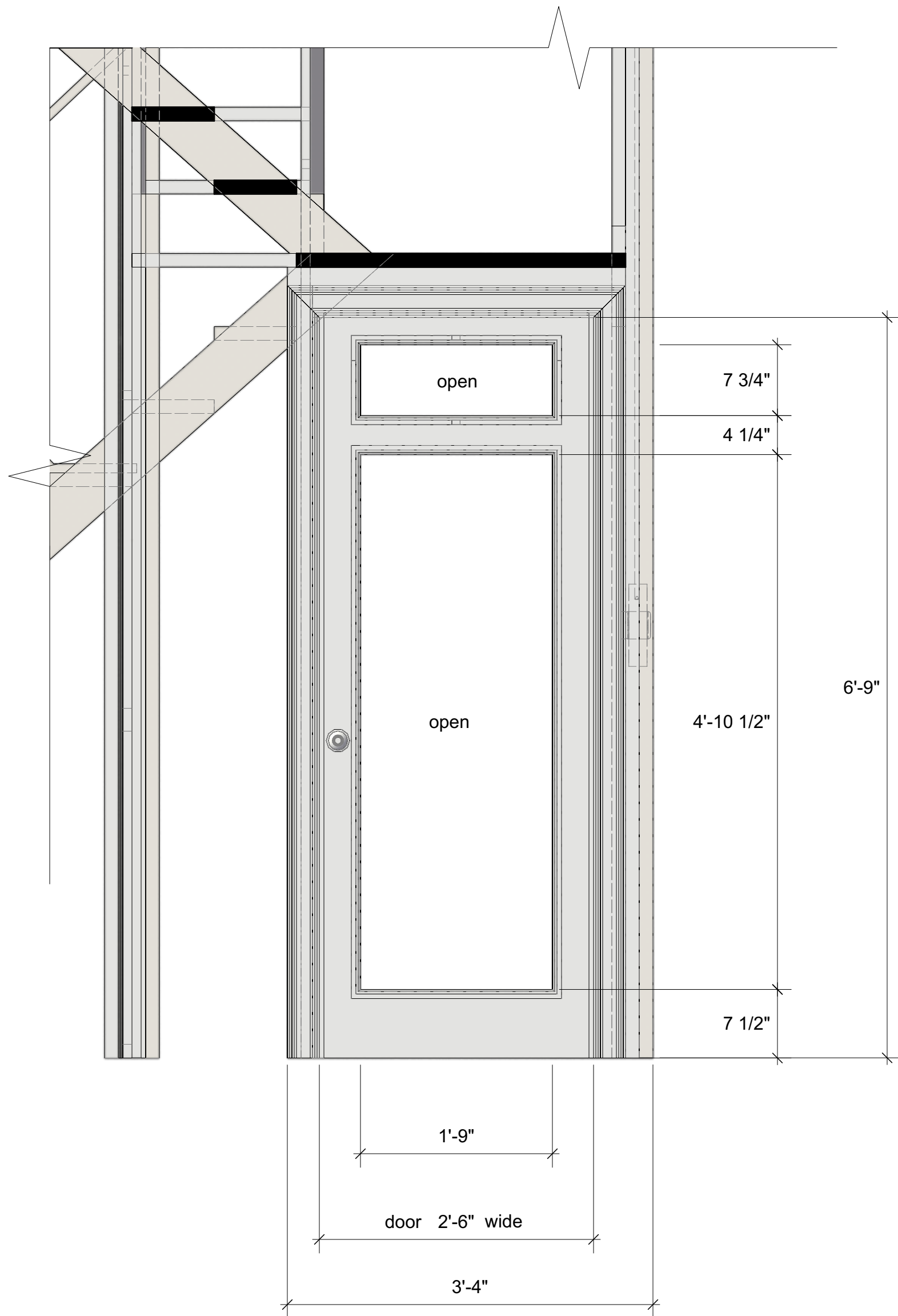
July 24, 2023



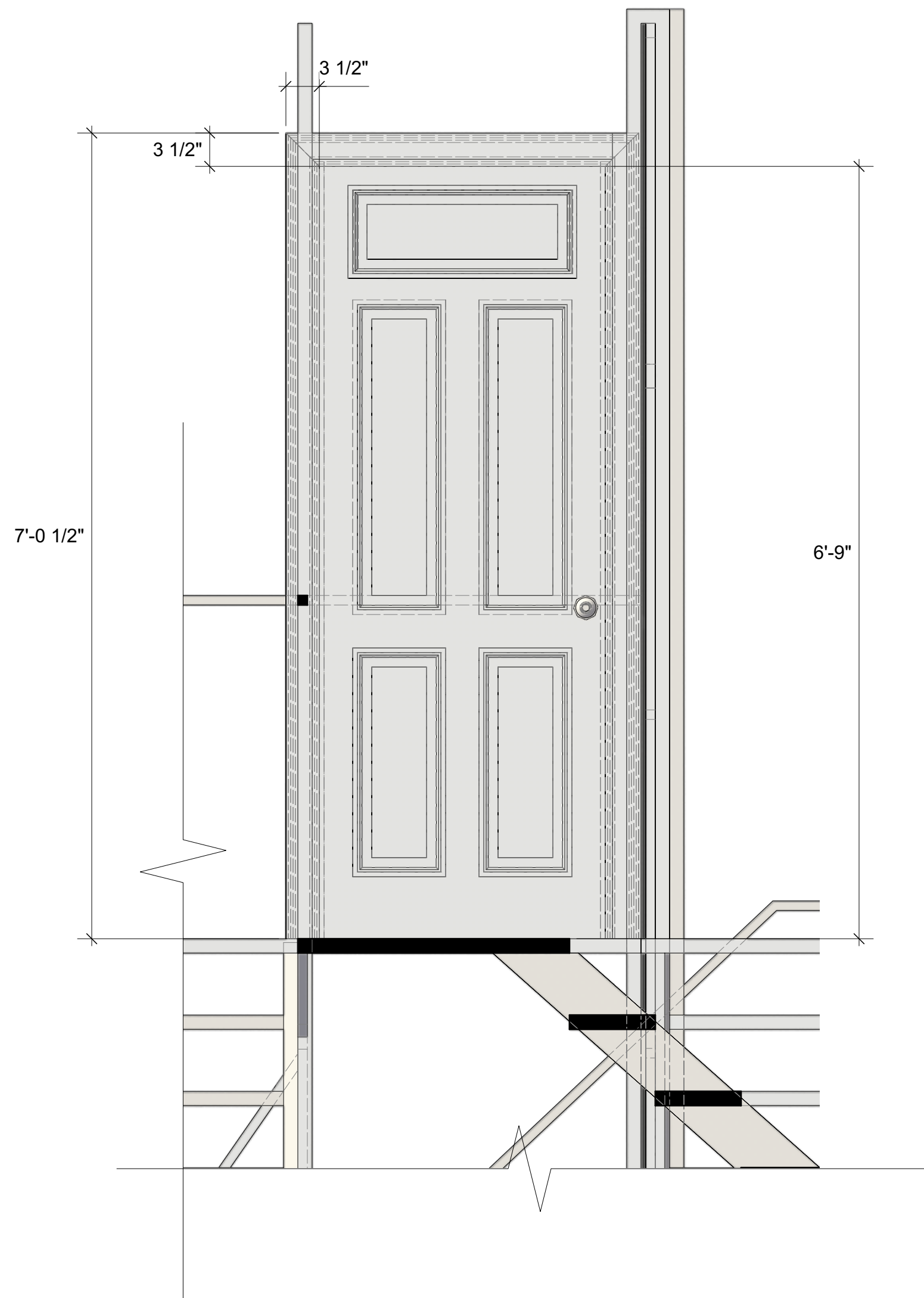
S.D. 13829
SCENIC DESIGNER

SIGNATURE *[Signature]*

D1 door 1: elevation



D3 door 3: elevation



NOTE:

- The door D1 and D2 are the same look, mirror image
- The door D3 is Victorian style mansion door
- The doors can be replaced with the similar style of doors in the inventory

Sweeney Todd by
Stephen Sondheim, Hugh
Wheeler

Directing: Tim L'ecuyer
 Music: Matthew Stephen
 Choreography: Zackery Betty-Neagle
 Costume: D. W.
 Lighting: Tyson Miller
 Sound: Thom Beaulieu
 Prop: Nick Winkler
 Tech Directing: Matthew Hutchens
 Scenic: Inseung Park
 Drafting: Inseung Park

The Winnepesaukee
Playhouse

doors

Scale:

1"=1'-0"

Date:

July 24, 2023



S.D. 13829
 SCENIC DESIGNER

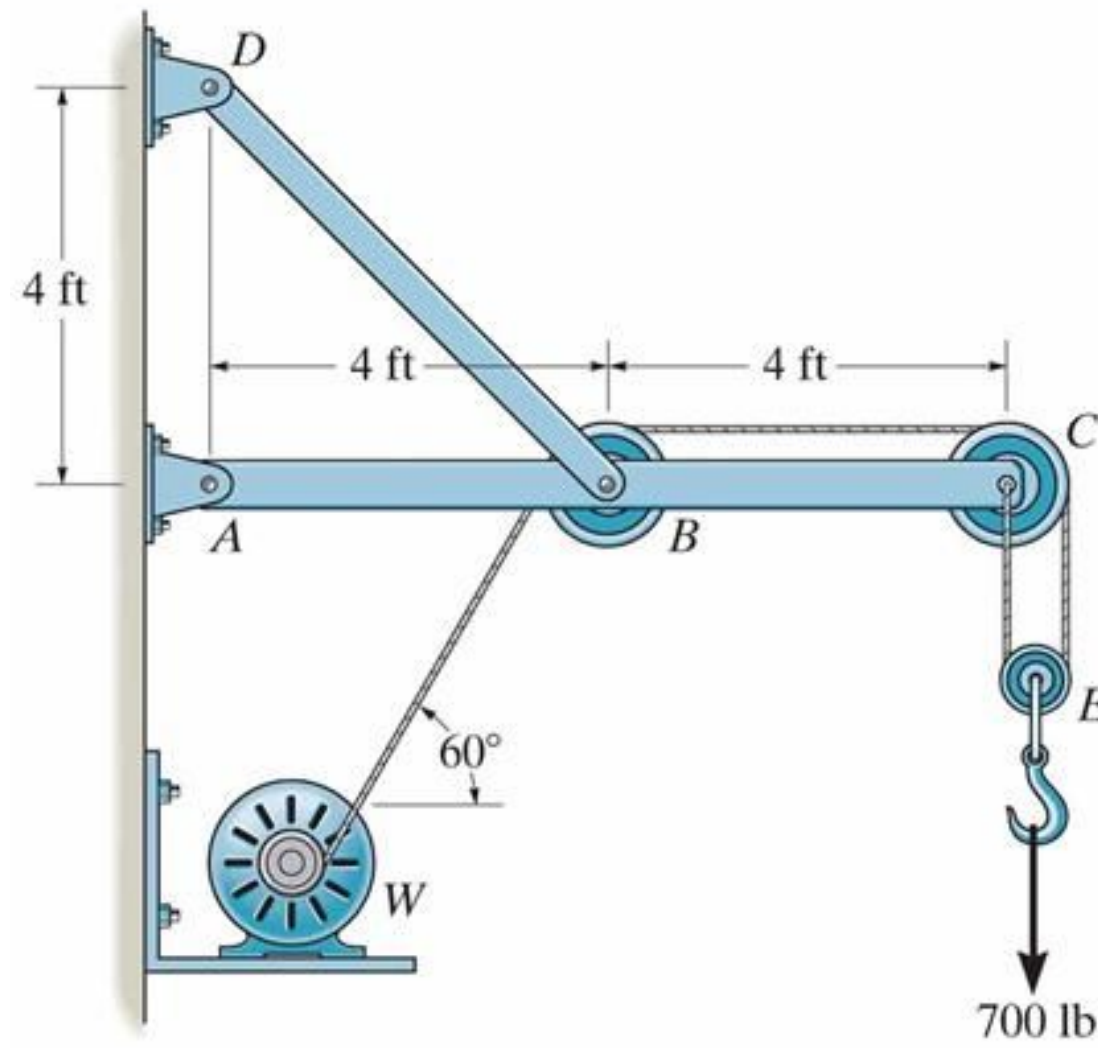
SIGNATURE *[Signature]*

E pulley: elevation

NOTE:

- please see the reference photos
- the pulley unit should be operated by the actors
- it can be modified as needed - the diameter of pulley, shape of pulley

reference 1



PROB06_092-093.jpg

Copyright © 2010 Pearson Prentice Hall, Inc.

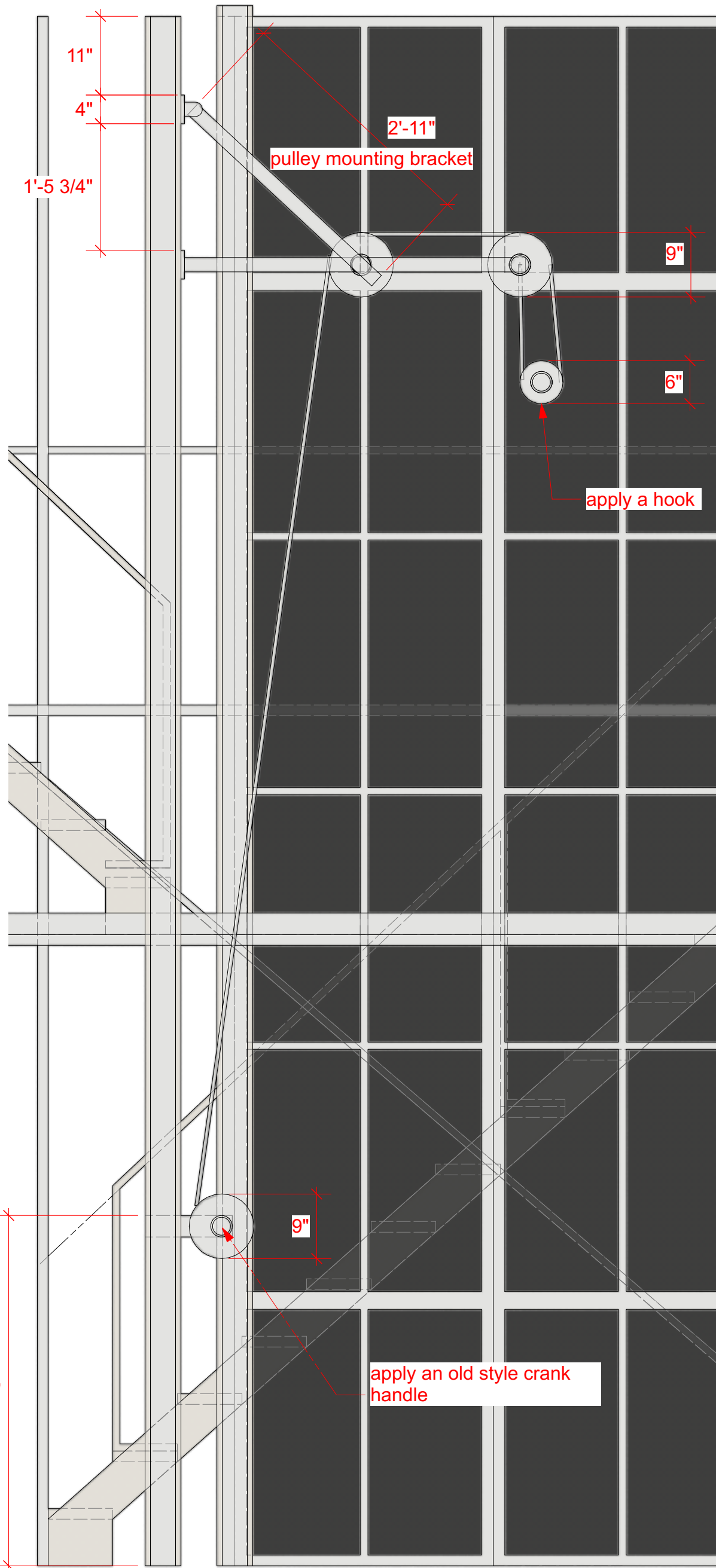
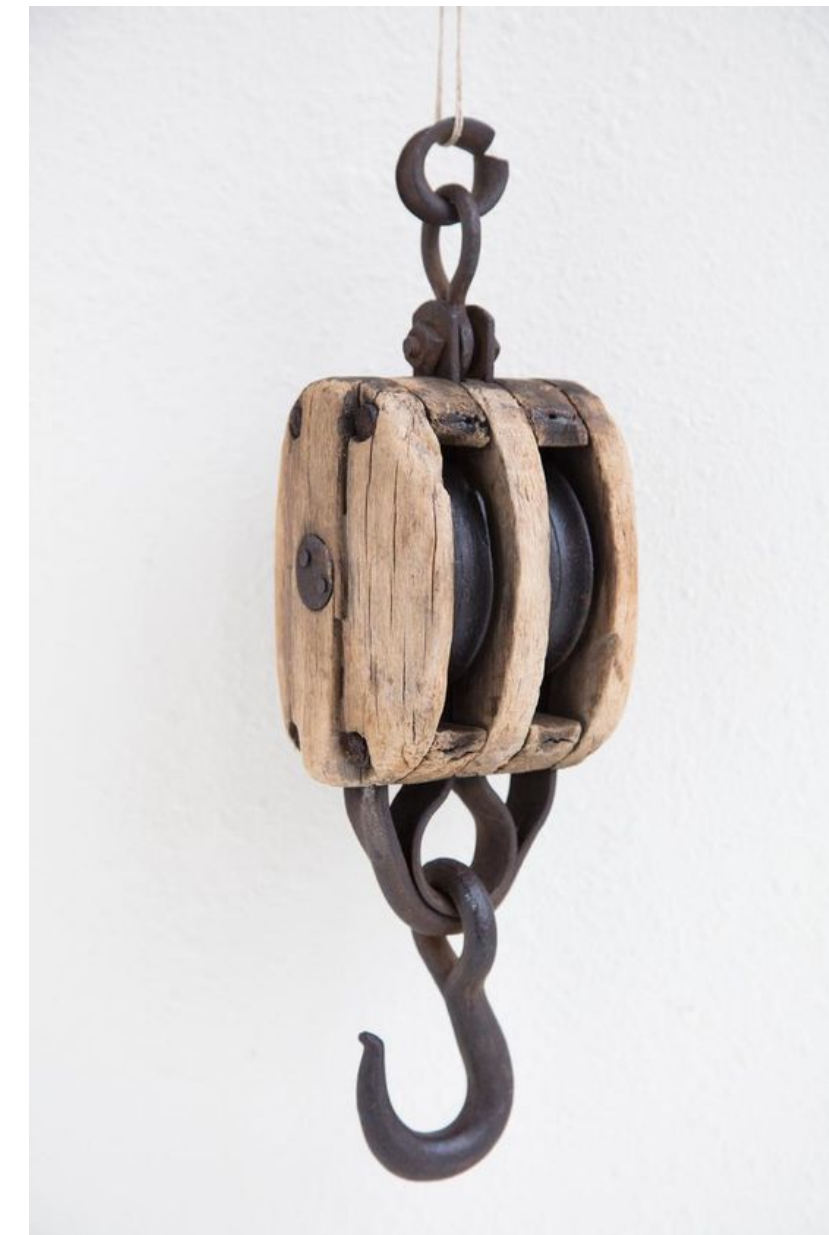
reference 2



reference 3



reference 4



Sweeney Todd by
Stephen Sondeim, Hugh Wheeler

Directing: Tim L'ecuyer
Music: Matthew Stephen
Choreography: Zackery Betty-Neagle
Costume: D. W.
Lighting: Tyson Miller
Sound: Thom Beaulieu
Prop: Nick Winkler
Tech Directing: Matthew Hutchens
Scenic: Inseung Park
Drafting: Inseung Park

The Winnepesaukee
Playhouse

pulley

Scale:

3/4" = 1'-0"

Date:

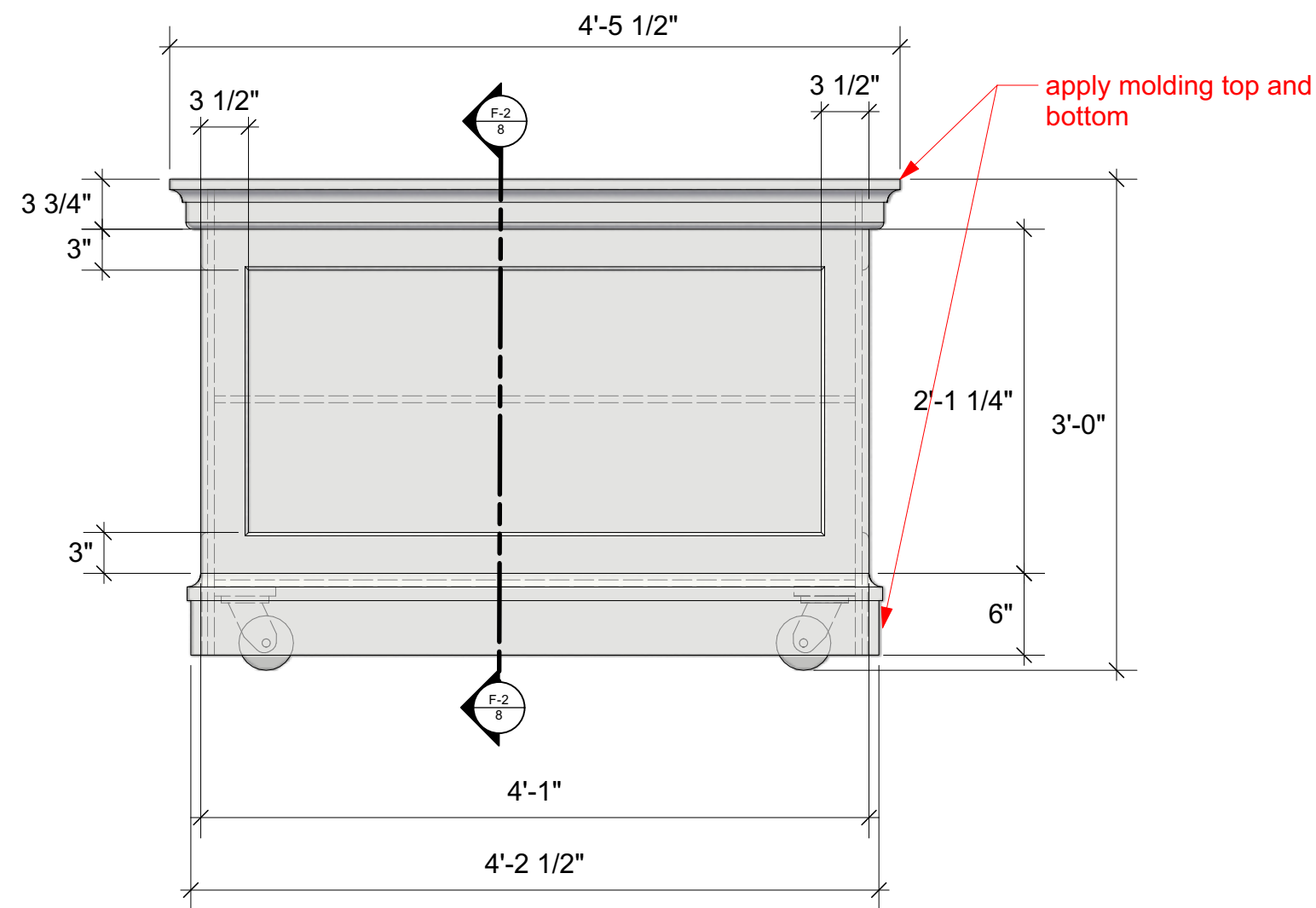
July 24, 2023



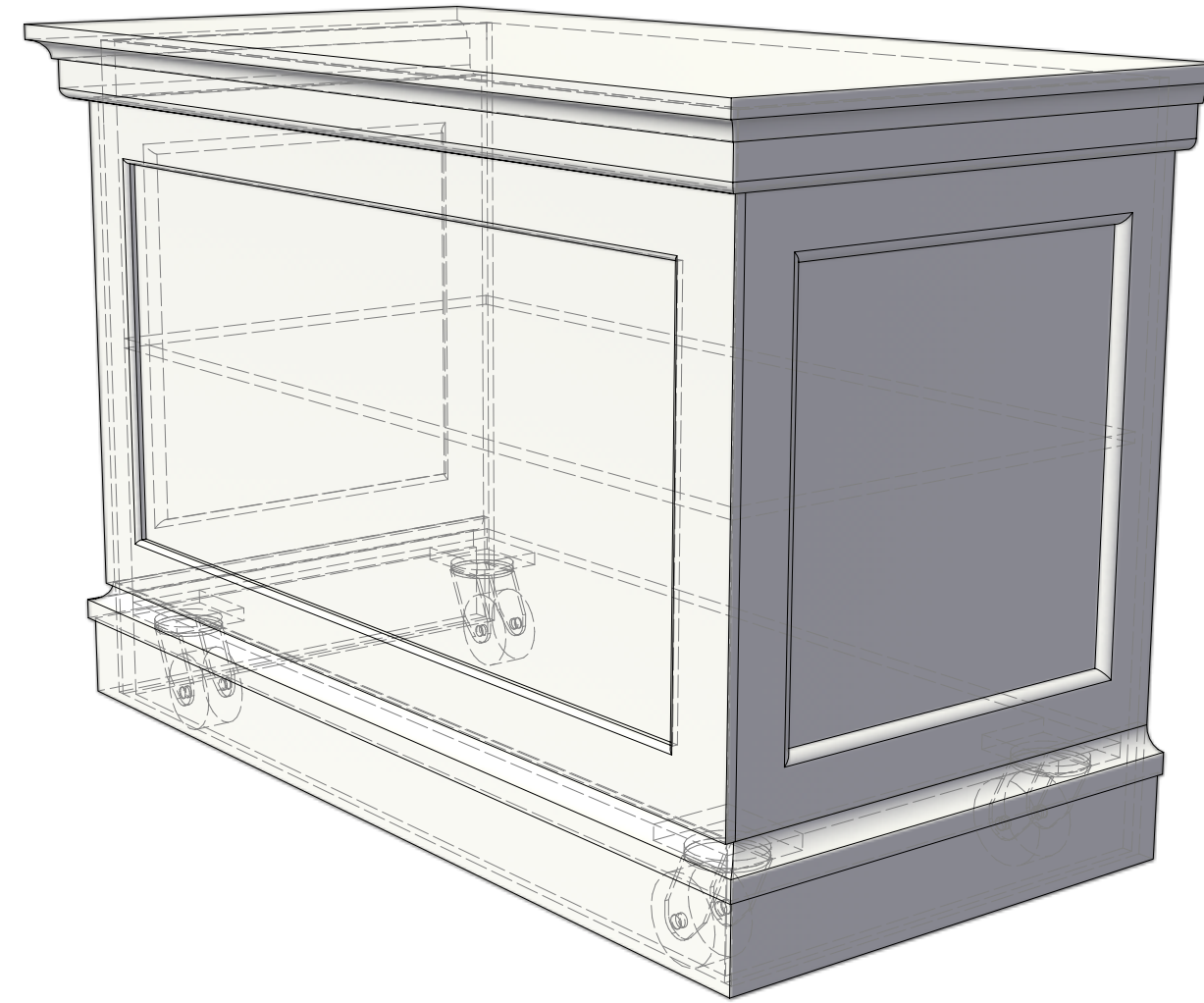
S.D. 13829
SCENIC DESIGNER

SIGNATURE *Inseung Park*

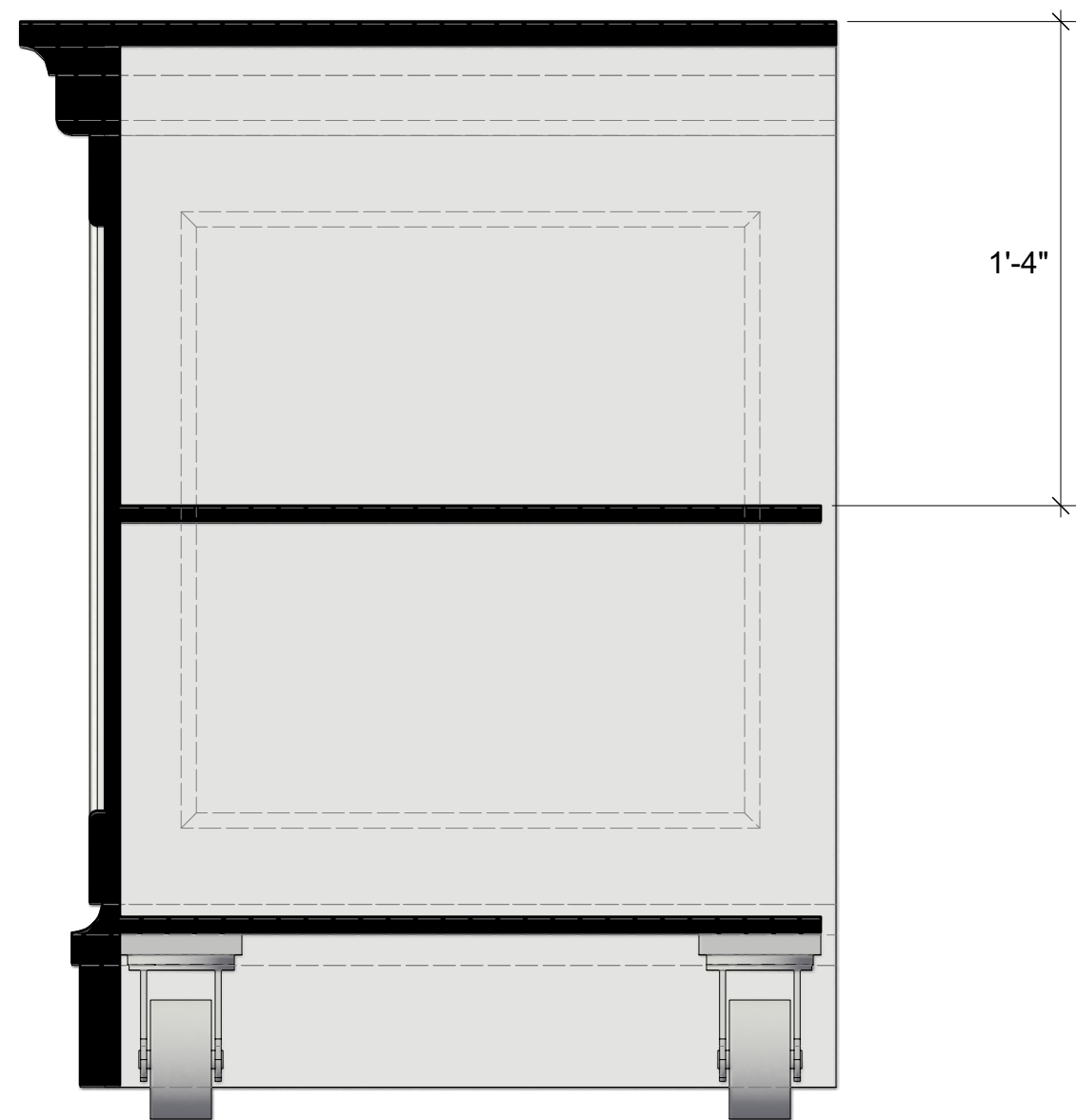
F-1 pie counter: front
scale: 1"=1'-0"



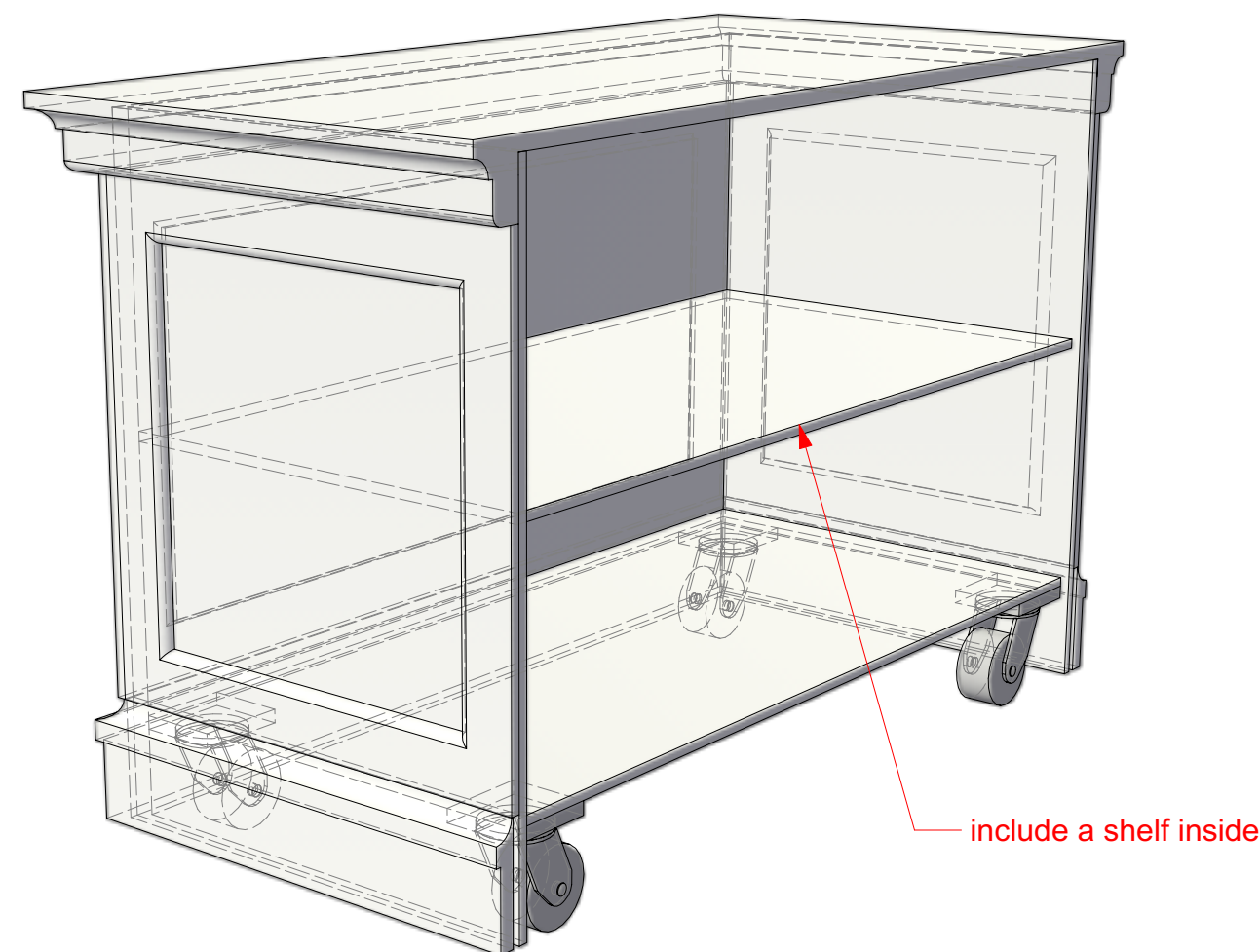
F-3 pie counter: front perspective



F-2 pie counter: section
scale: 2"=1'-0"
cutting surface indicated by black solid



F-4 pie counter: rear perspective



Sweeney Todd by
Stephen Sondeim, Hugh
Wheeler

Directing: Tim L'ecuyer
Music: Matthew Stephen
Choreography: Zackery Betty-Neagle
Costume: D. W.
Lighting: Tyson Miller
Sound: Thom Beaulieu
Prop: Nick Winkler
Tech Directing: Matthew Hutchens
Scenic: Inseung Park
Drafting: Inseung Park

**The Winnepesaukee
Playhouse**

pie counter

Scale:

1"=1'-0"

Date:

July 24, 2023

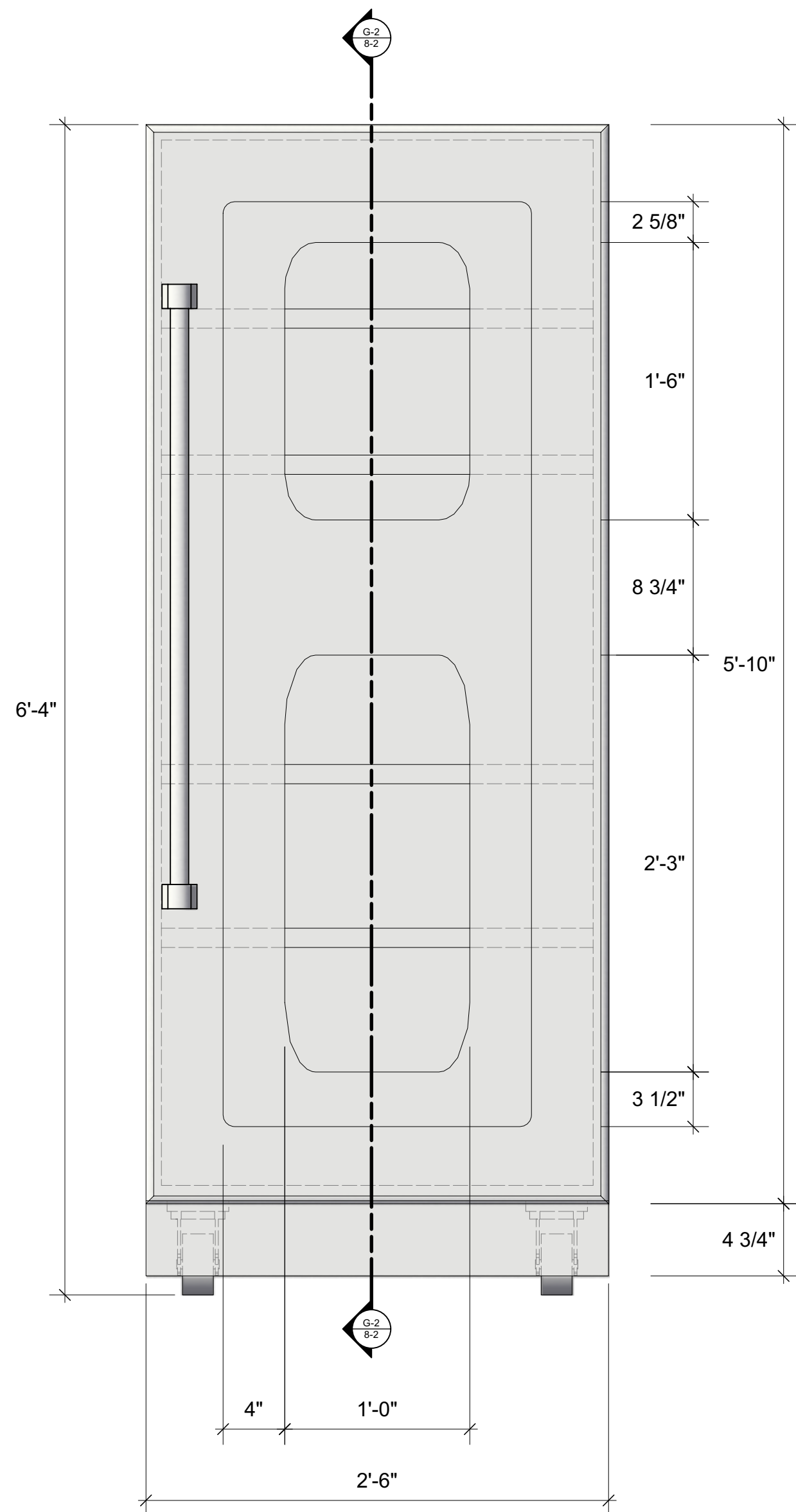


S.D. 13829
SCENIC DESIGNER

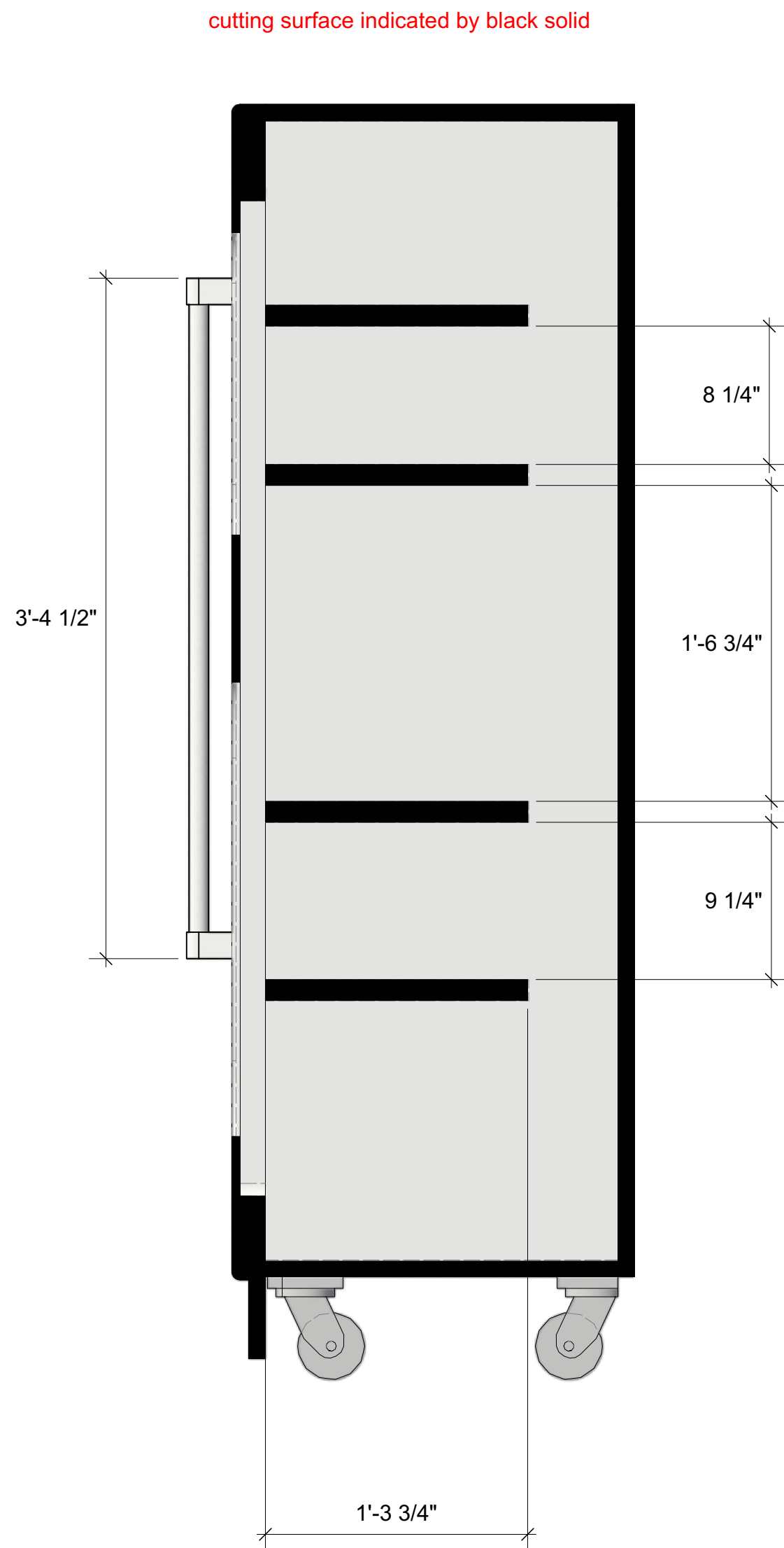
SIGNATURE *[Signature]*

8-1

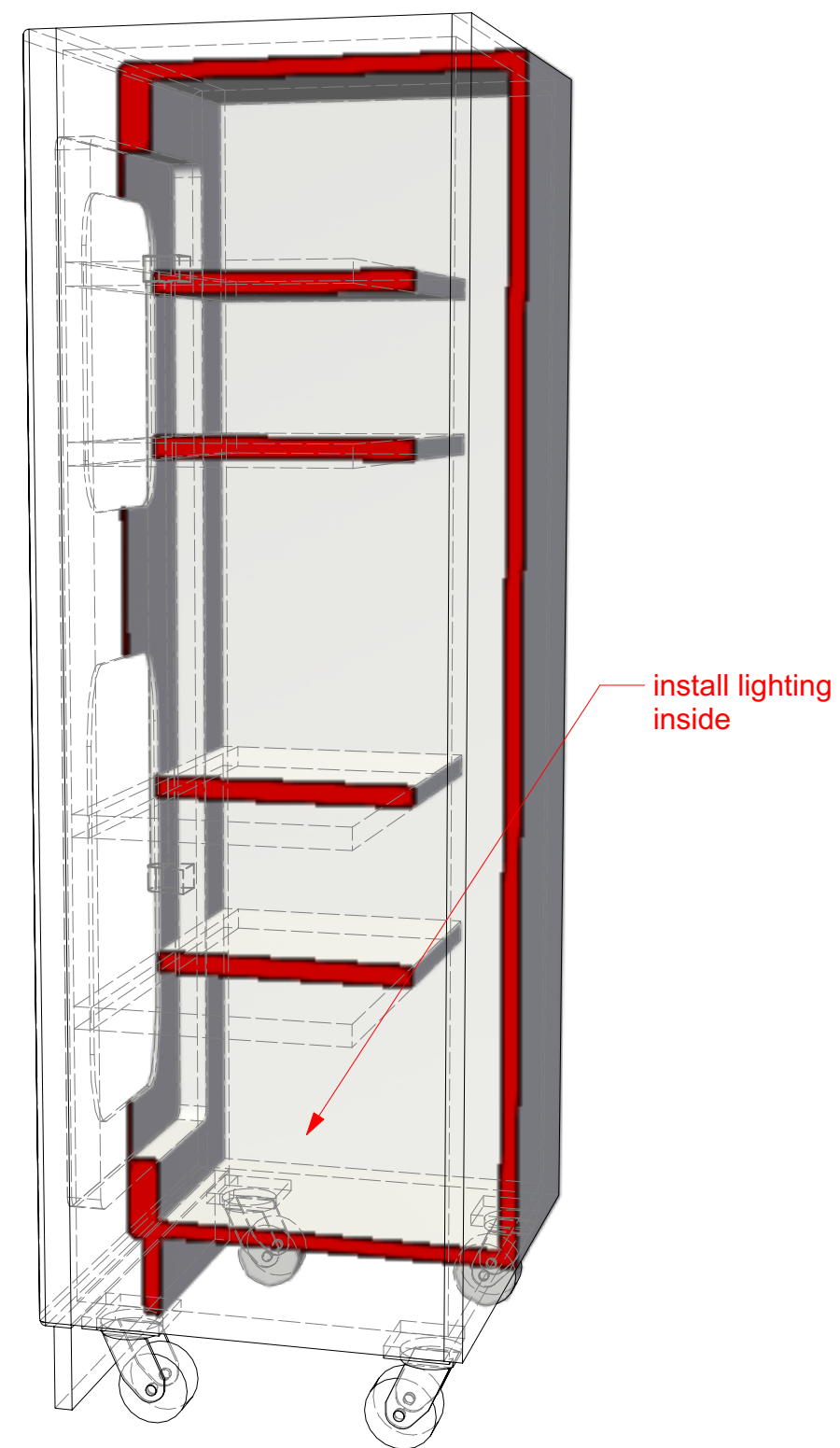
G-1 oven: front



G-2 oven: section



G-3 oven: section perspective



reference



Sweeney Todd by
Stephen Sondheim, Hugh
Wheeler

Directing: Tim L'ecuyer
Music: Matthew Stephen
Choreography: Zackery Betty-Neagle
Costume: D. W.
Lighting: Tyson Miller
Sound: Thom Beaulieu
Prop: Nick Winkler
Tech Directing: Matthew Hutchens
Scenic: Inseung Park
Drafting: Inseung Park

**The Winnepesaukee
Playhouse**

oven

Scale:

1 1/2"=1'-0"

Date:

July 24, 2023



S.D. 13829
SCENIC DESIGNER

SIGNATURE *Inseung Park*

8-2