

Ground plan:  
Horizontal section at 6' high  
- solid line: extents below cut plane  
- dashed line: extents above cut plane

**NOTE:**  
- the floor is concrete: each square is 8'x8'  
- Roof unit is in pink  
- Kitchen island is in blue  
- Frames are in green: frame 2 pivots  
- Wedding lamp pocket is in purple: 11 red wedding lamps are hidden inside and fly in for finale scene

**Song of Me**  
by Mai Le and Peter Ton

**Creative Team:**

- Directing: Peter Ton
- Costume Design: Jaymee Ngerwicht
- Lighting Design: Janessa A. Harris
- Prop: Jodi Bobrovsky
- Sound Design: Isaiah Parnell
- Technical Directing: Joel Burkholder
- Scenic Design: Inseung Park
- Drafting: Inseung Park

**Stages Repertory Theatre**

**Title:**

Ground Plan

**Scale:**

1/2" = 1'-0"

**Date:**

April 1, 2022



S.D. 13829  
SCENIC DESIGNER

SIGNATURE *Inseung Park*

**1-1**



**NOTE:**

- Concrete floor
- warm & cool grey
- each concrete square is 8'x8', 1/4" between them
- semi gloss finish

**Song of Me**

by Mai Le and Peter Ton

**Creative Team:**

Directing: Peter Ton

Costume Design: Jaymee Ngernwichit

Lighting Design: Janessa A. Harris

Prop: Jodi Bobrovsky

Sound Design: Isaiah Parnell

Technical Directing: Joel Burkholder

Scenic Design: Inseung Park

Drafting: Inseung Park

**Stages Repetory Theatre**

**Title:**

Paint Elevation: Floor

**Scale:**

1/2"=1'-0"

**Date:**

April 4, 2022



S.D. 13829  
SCENIC DESIGNER

SIGNATURE *Inseung Park*

Reference



**Song of Me**  
by Mai Le and Peter Ton

**Creative Team:**

- Directing: Peter Ton
- Costume Design: Jaymee Ngernwicht
- Lighting Design: Janessa A. Harris
- Prop: Jodi Bobrovsky
- Sound Design: Isaiah Parnell
- Technical Directing: Joel Burkholder
- Scenic Design: Inseung Park
- Drafting: Inseung Park

**Stages Repertory Theatre**

**Title:**

Section: SOUTH

**Scale:**

1/4" = 1'-0"

**Date:**

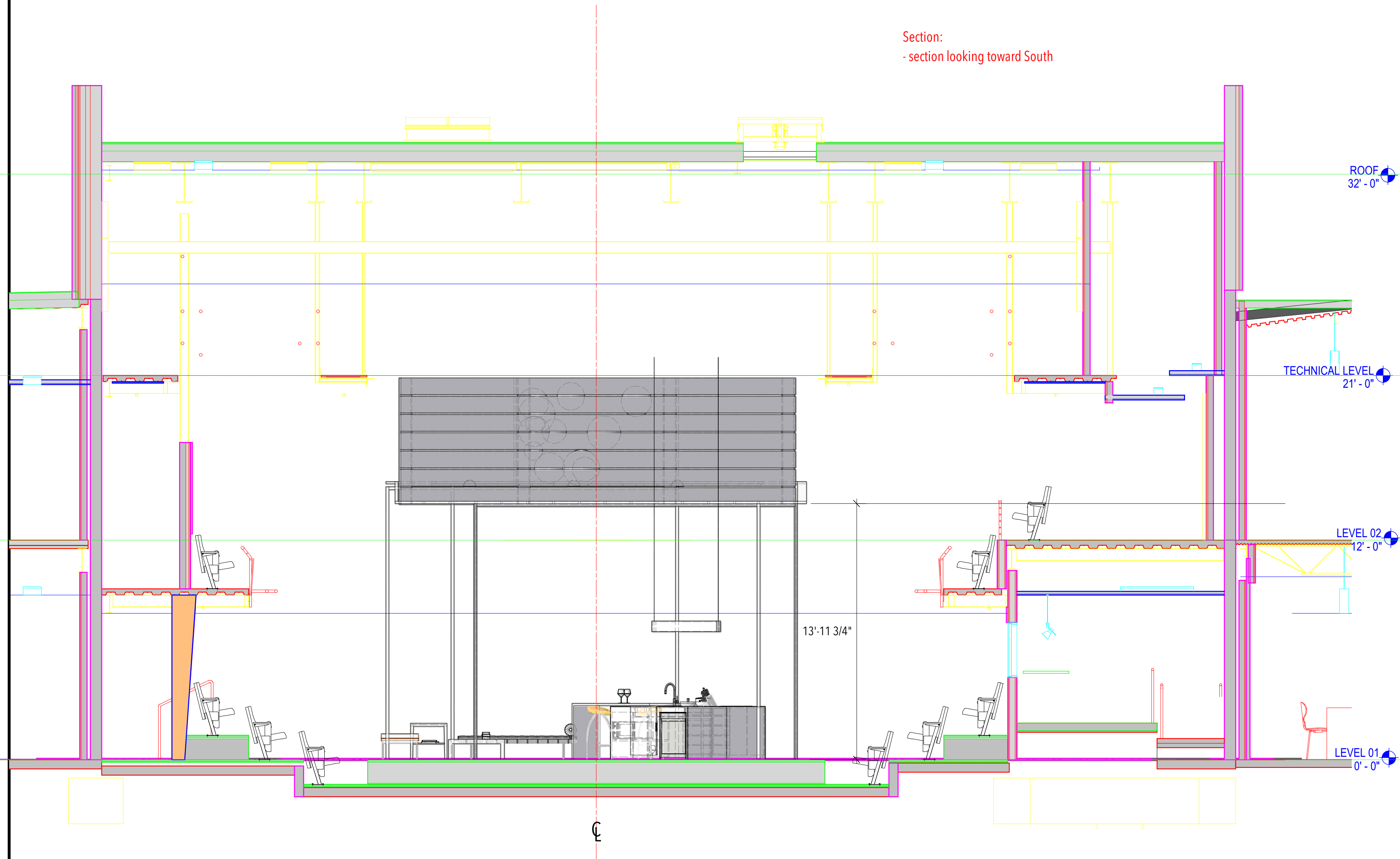
April 4, 2022



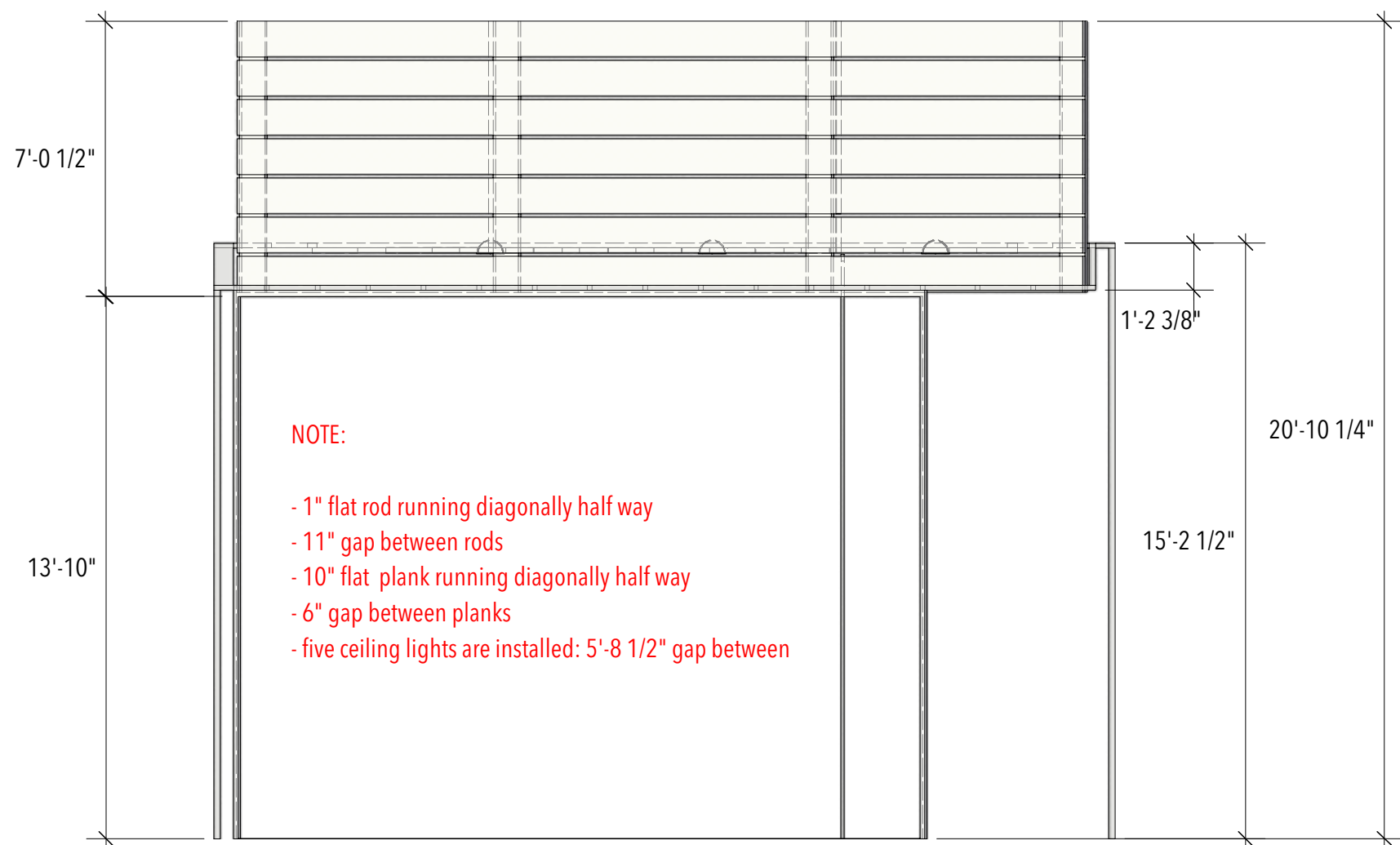
S.D. 13829  
SCENIC DESIGNER

SIGNATURE *Inseung Park*

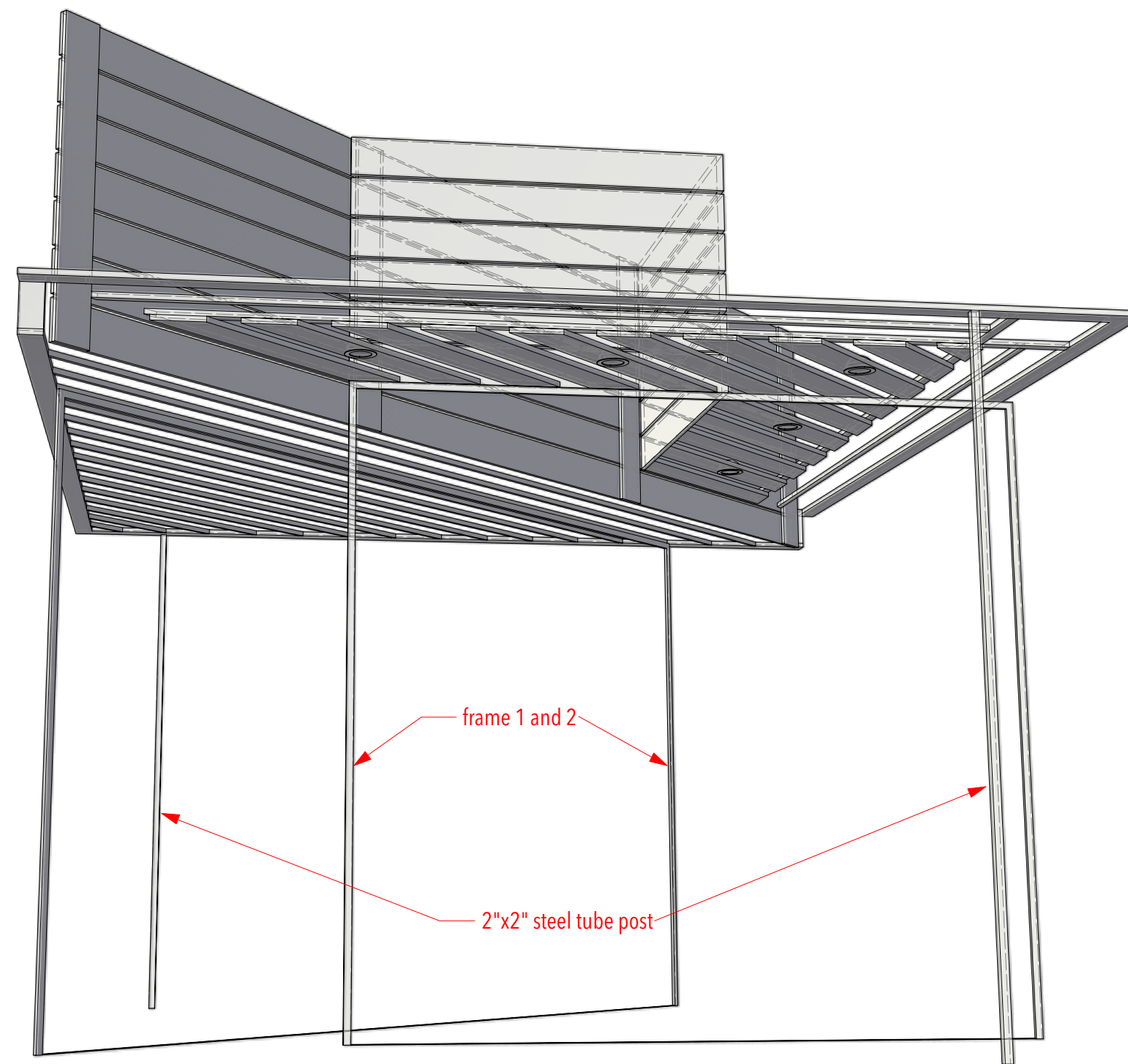
Section:  
- section looking toward South



**A-1 Roof unit: front**



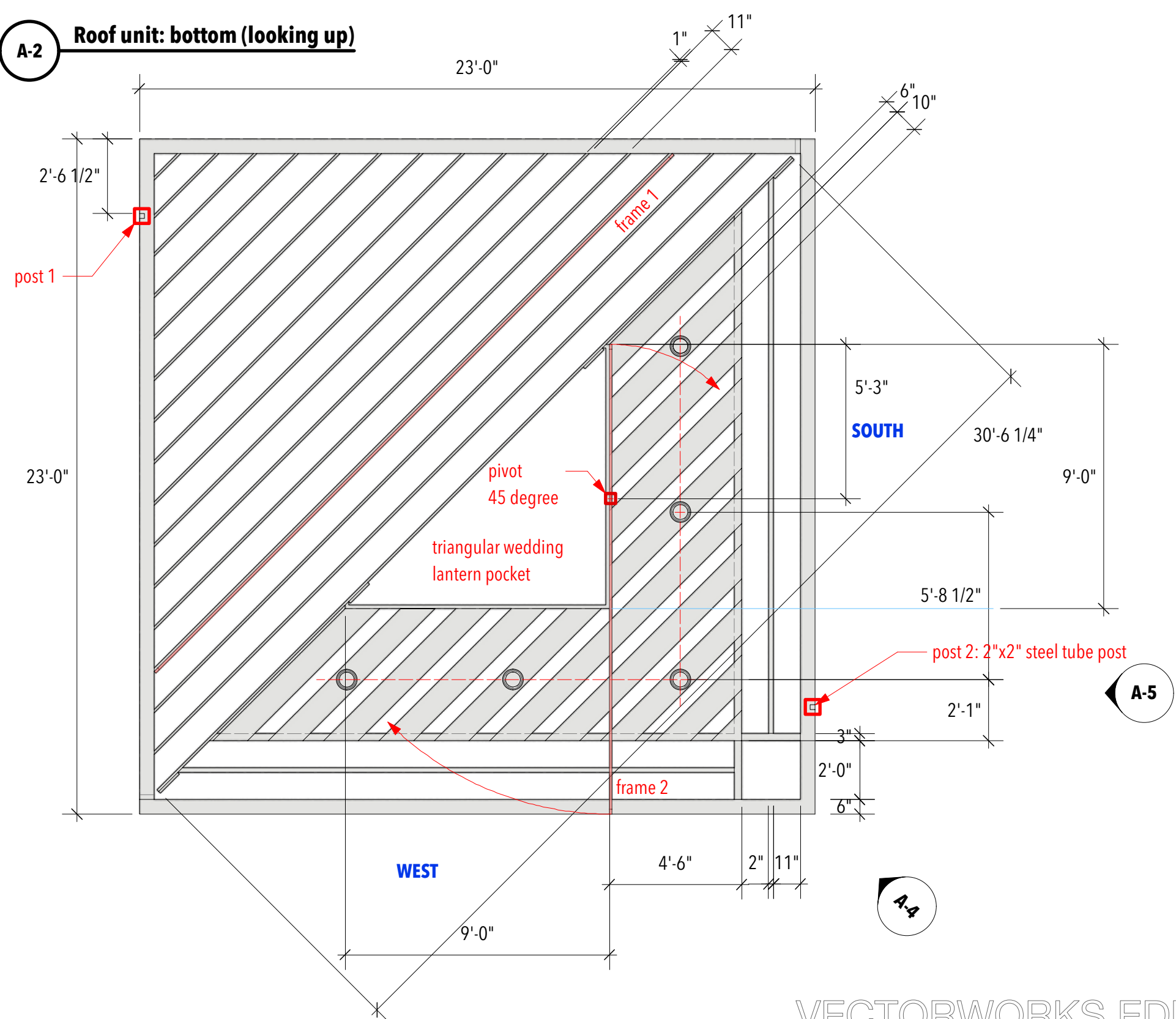
**A-3 Roof unit: perspective**



**NOTE:**

- Steel materials (posts and frame) should be raw without painting, keep them as clean and metallic as possible, may need to sand to polish
- Roof unit is white except for posts and frames

**A-2 Roof unit: bottom (looking up)**



**Reference:**



**Song of Me**  
by Mai Le and Peter Ton

**Creative Team:**

- Directing: Peter Ton
- Costume Design: Jaymee Ngernwichit
- Lighting Design: Janessa A. Harris
- Prop: Jodi Bobrovsky
- Sound Design: Isaiah Parnell
- Technical Directing: Joel Burkholder
- Scenic Design: Inseung Park
- Drafting: Inseung Park

**Stages Repertory Theatre**

**Title:**

Roof unit

**Scale:**

1/4" = 1'-0"

**Date:**

April 4, 2022



S.D. 13829  
SCENIC DESIGNER  
SIGNATURE *Inseung Park*

**A-4** Roof unit: A-4



**Song of Me**  
by Mai Le and Peter Ton

**Creative Team:**

- Directing: Peter Ton
- Costume Design: Jaymee Ngerwichit
- Lighting Design: Janessa A. Harris
- Prop: Jodi Bobrovsky
- Sound Design: Isaiah Parnell
- Technical Directing: Joel Burkholder
- Scenic Design: Inseung Park
- Drafting: Inseung Park

**Stages Repetory Theatre**

**Title:**

Roof unit: elevation

**Scale:**

1/2"=1'-0"

**Date:**

April 4, 2022



S.D. 13829  
SCENIC DESIGNER

SIGNATURE *Inseung Park*

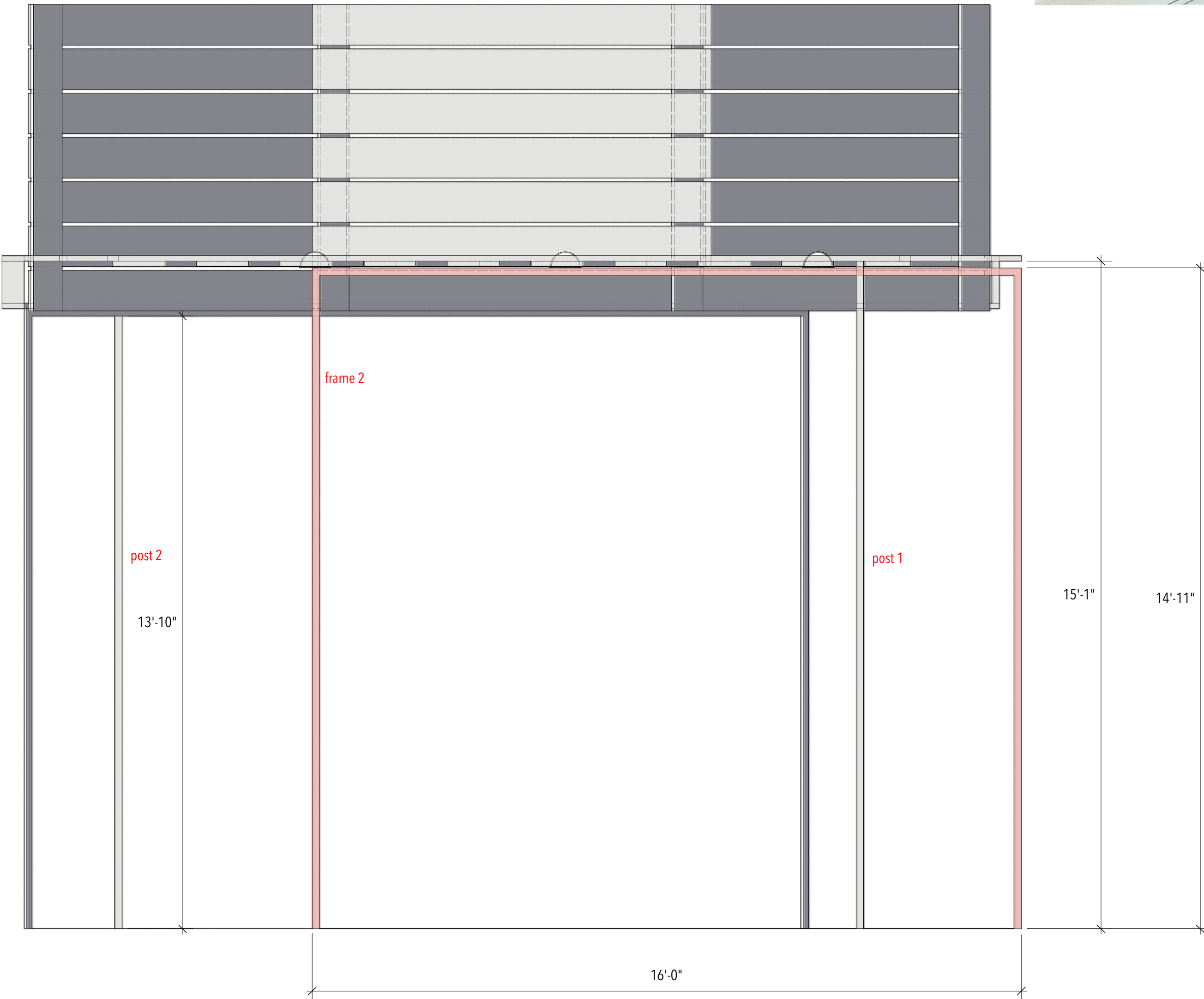


**Song of Me**  
by Mai Le and Peter Ton

**Creative Team:**

- Directing: Peter Ton
- Costume Design: Jaymee Ngerwichit
- Lighting Design: Janessa A. Harris
- Prop: Jodi Bobrovsky
- Sound Design: Isaiah Parnell
- Technical Directing: Joel Burkholder
- Scenic Design: Inseung Park
- Drafting: Inseung Park

**A-5 Roof unit: A-5**



**NOTE:**

- The color of roof unit is [Quicksilver in Sherwin-Williams color swatch, number SW 6245]
- Or Icicle, SW 6238
- All steel materials (posts and frame) must be raw metallic chrome, please sand the dirty/greasy stuff off the surface

**Stages Repertory Theatre**

**Title:**

Roof unit: elevation, A-5

**Scale:**

1/2"=1'-0"

**Date:**

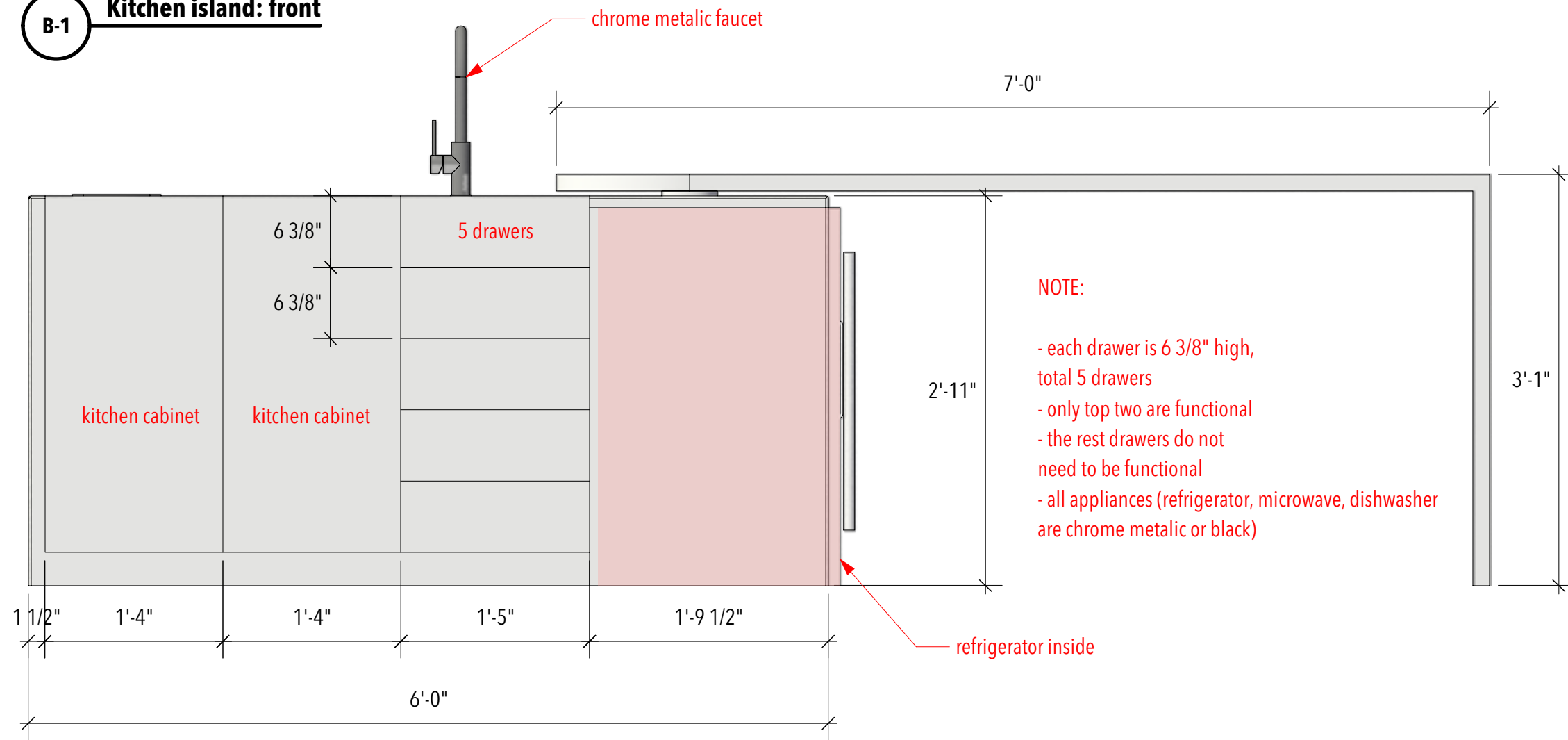
April 4, 2022



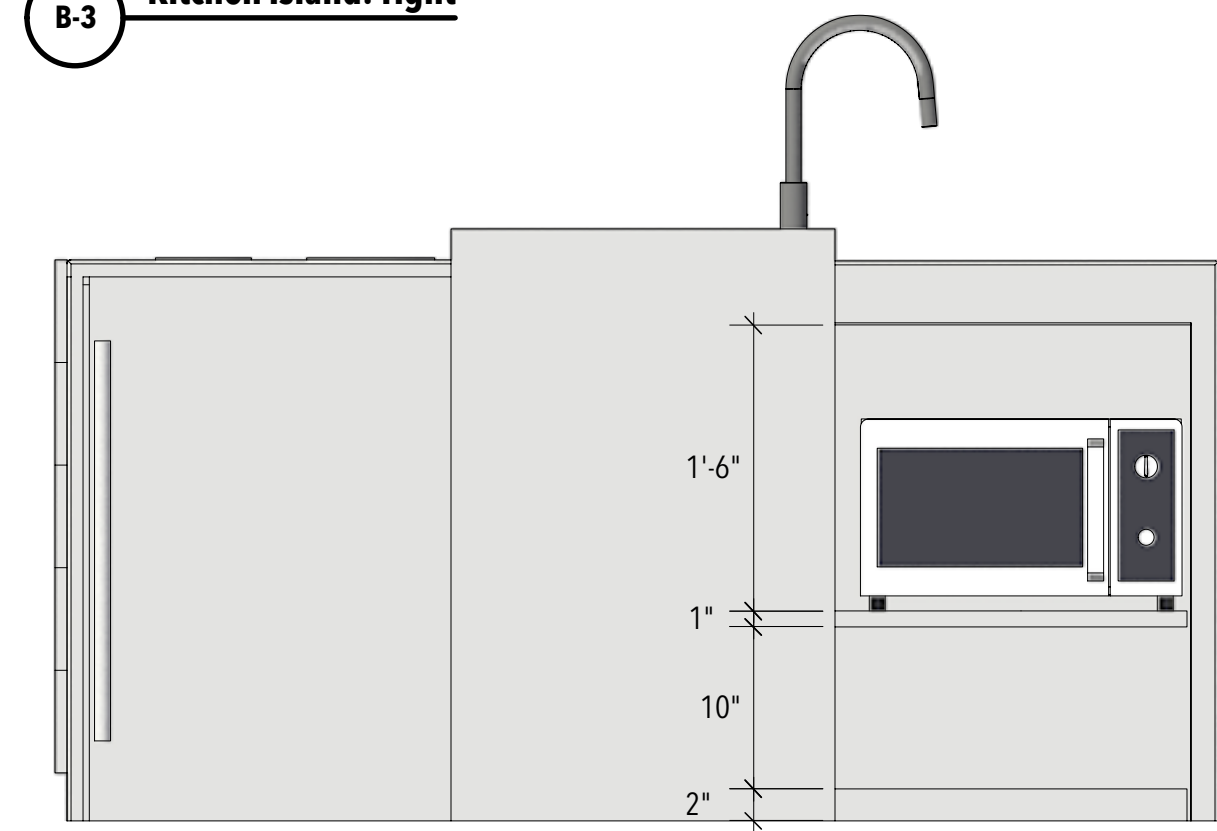
S.D. 13829  
SCENIC DESIGNER

SIGNATURE *Inseung Park*

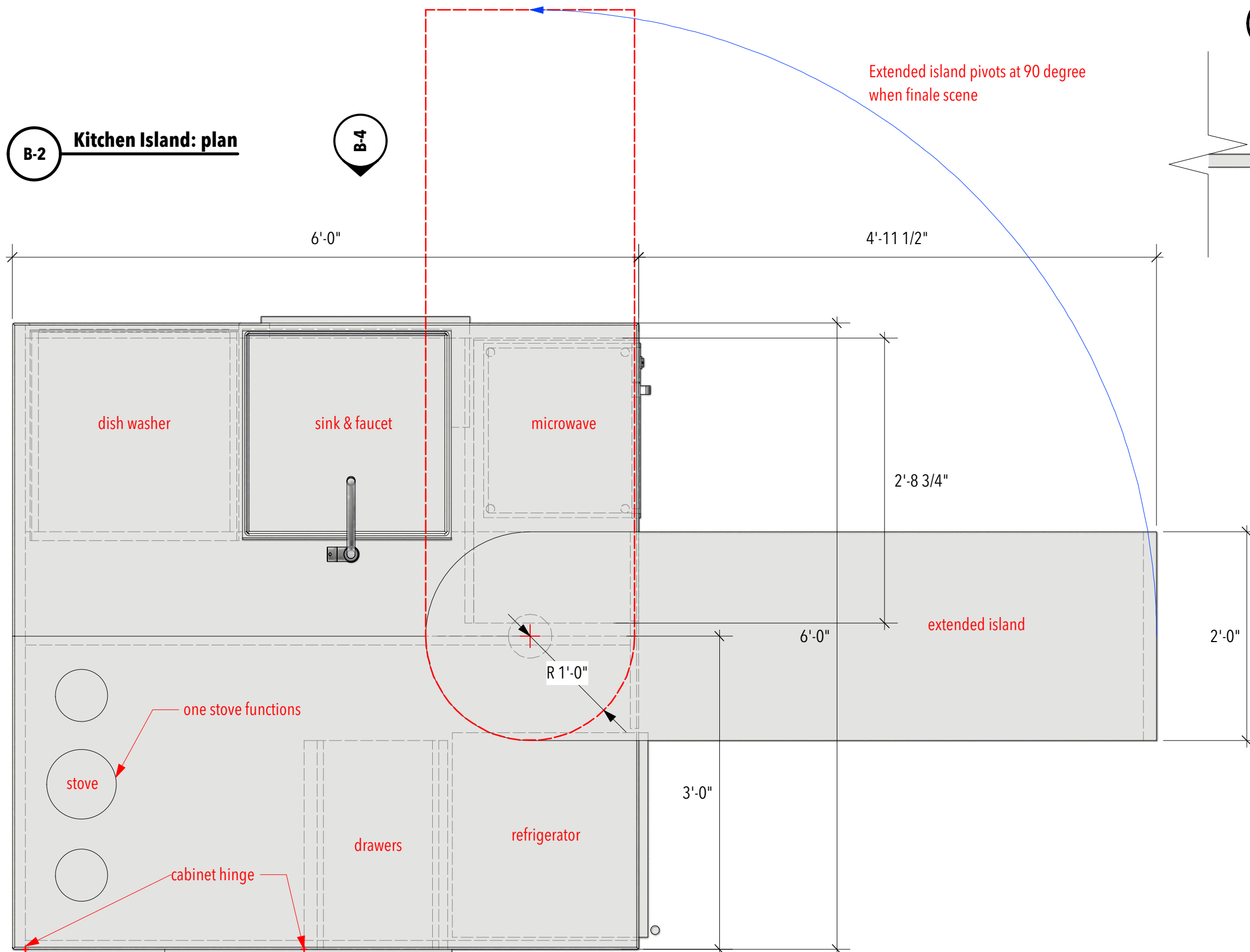
**B-1 Kitchen island: front**



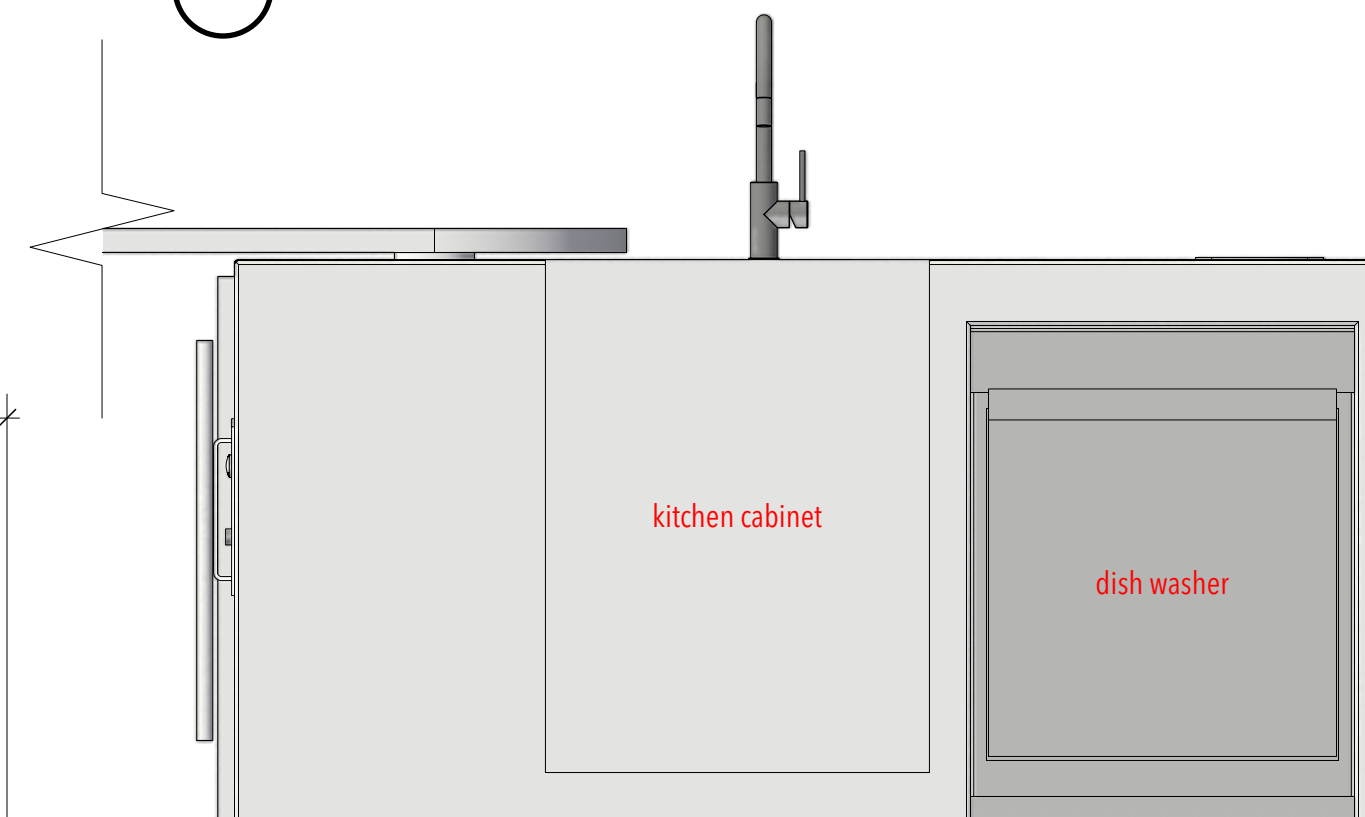
**B-3 Kitchen island: right**



**B-2 Kitchen Island: plan**



**B-4 Kitchen Island: back**



**Song of Me**  
by Mai Le and Peter Ton

**Creative Team:**

Directing: Peter Ton  
 Costume Design: Jaymee Ngernwicht  
 Lighting Design: Janessa A. Harris  
 Prop: Jodi Bobrovsky  
 Sound Design: Isaiah Parnell  
 Technical Directing: Joel Burkholder  
 Scenic Design: Inseung Park  
 Drafting: Inseung Park

**Stages Repertory Theatre**

**Title:**

Kitchen island

**Scale:**

1"=1'-0"

**Date:**

April 4, 2022

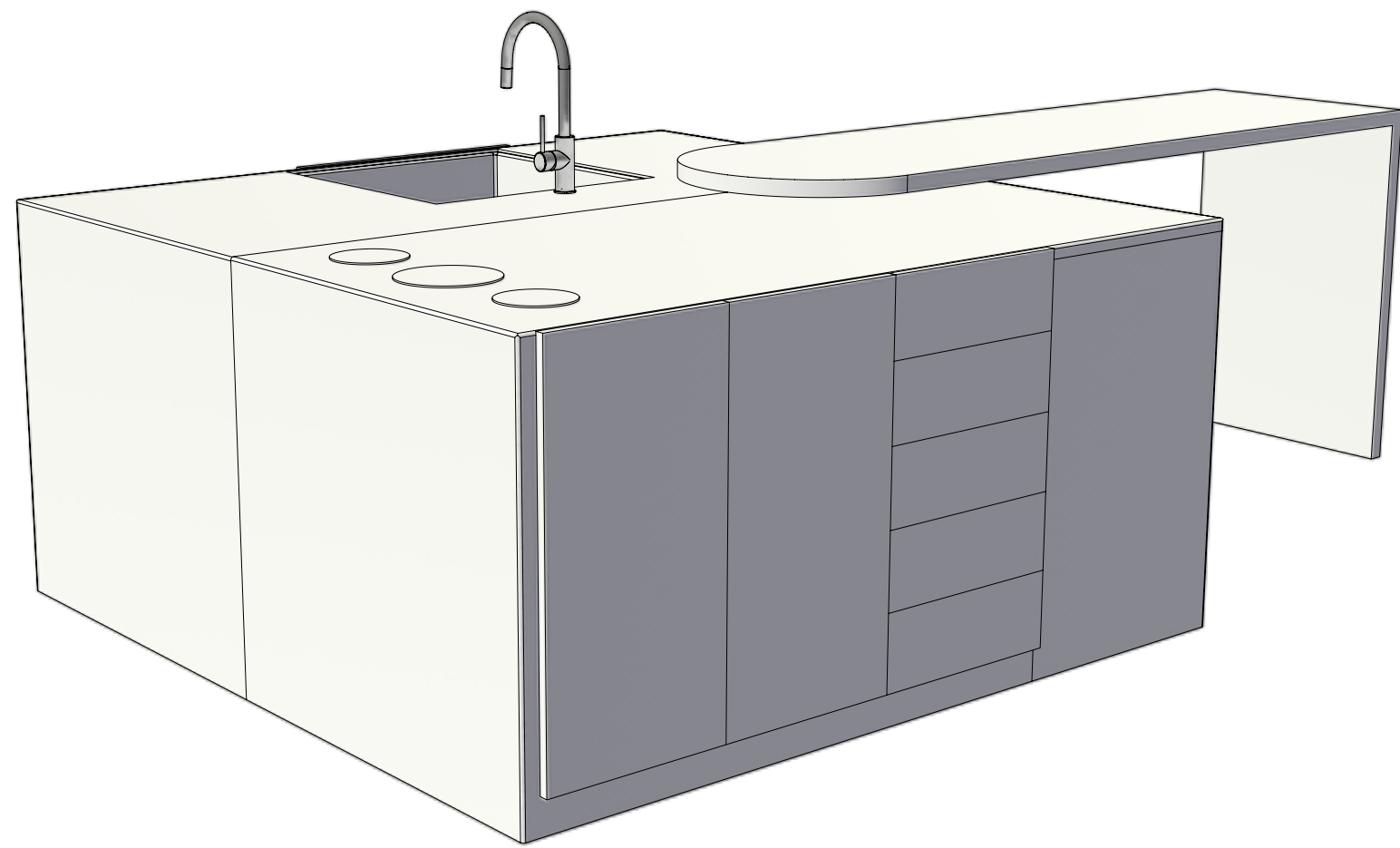


S.D. 13829  
SCENIC DESIGNER

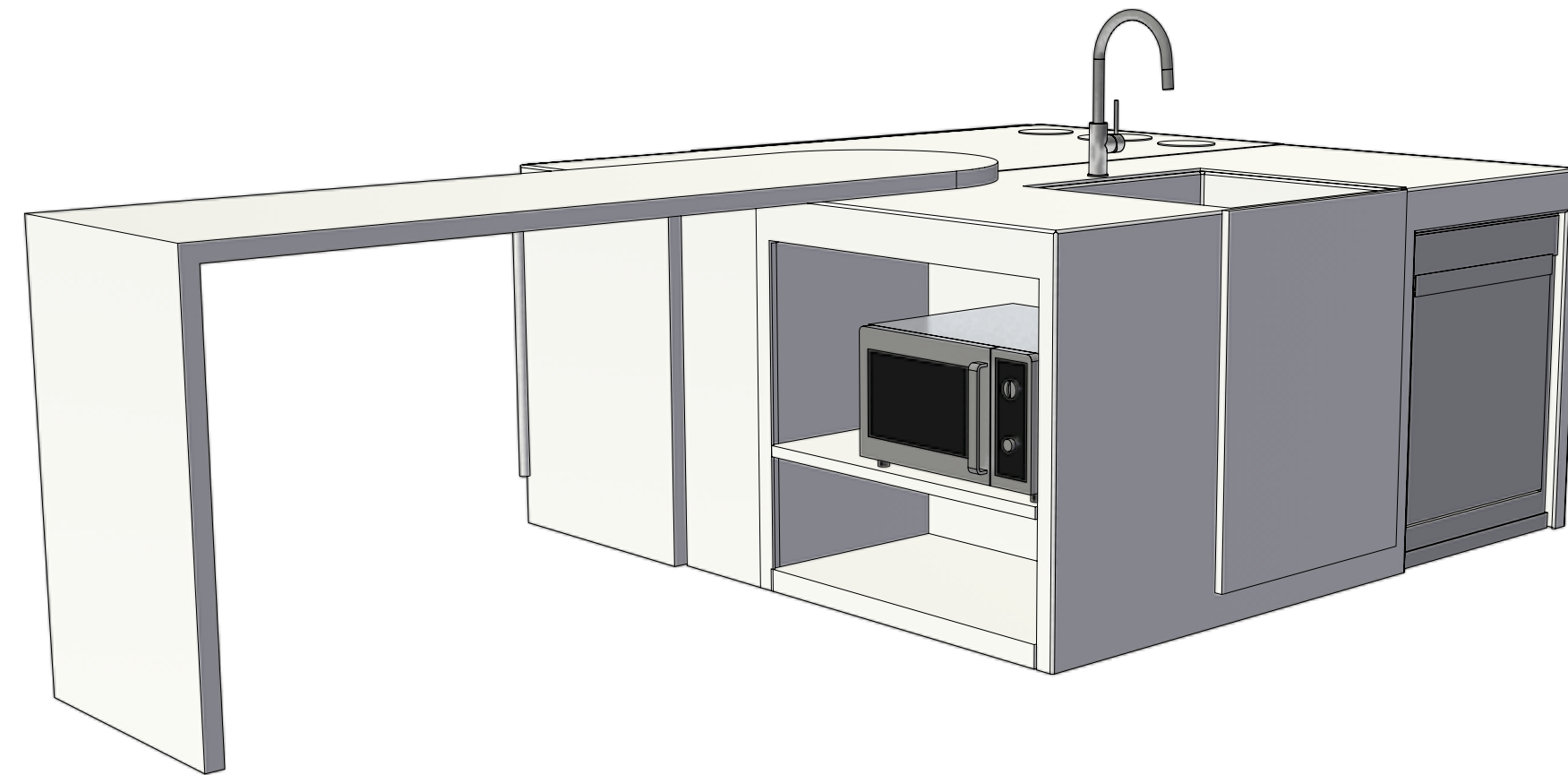
SIGNATURE *[Signature]*

**4.1**

**B-5 Kitchen island: perspective-cabinet**



**B-7 Kitchen island: perspective - sink cabinet/dishwasher**

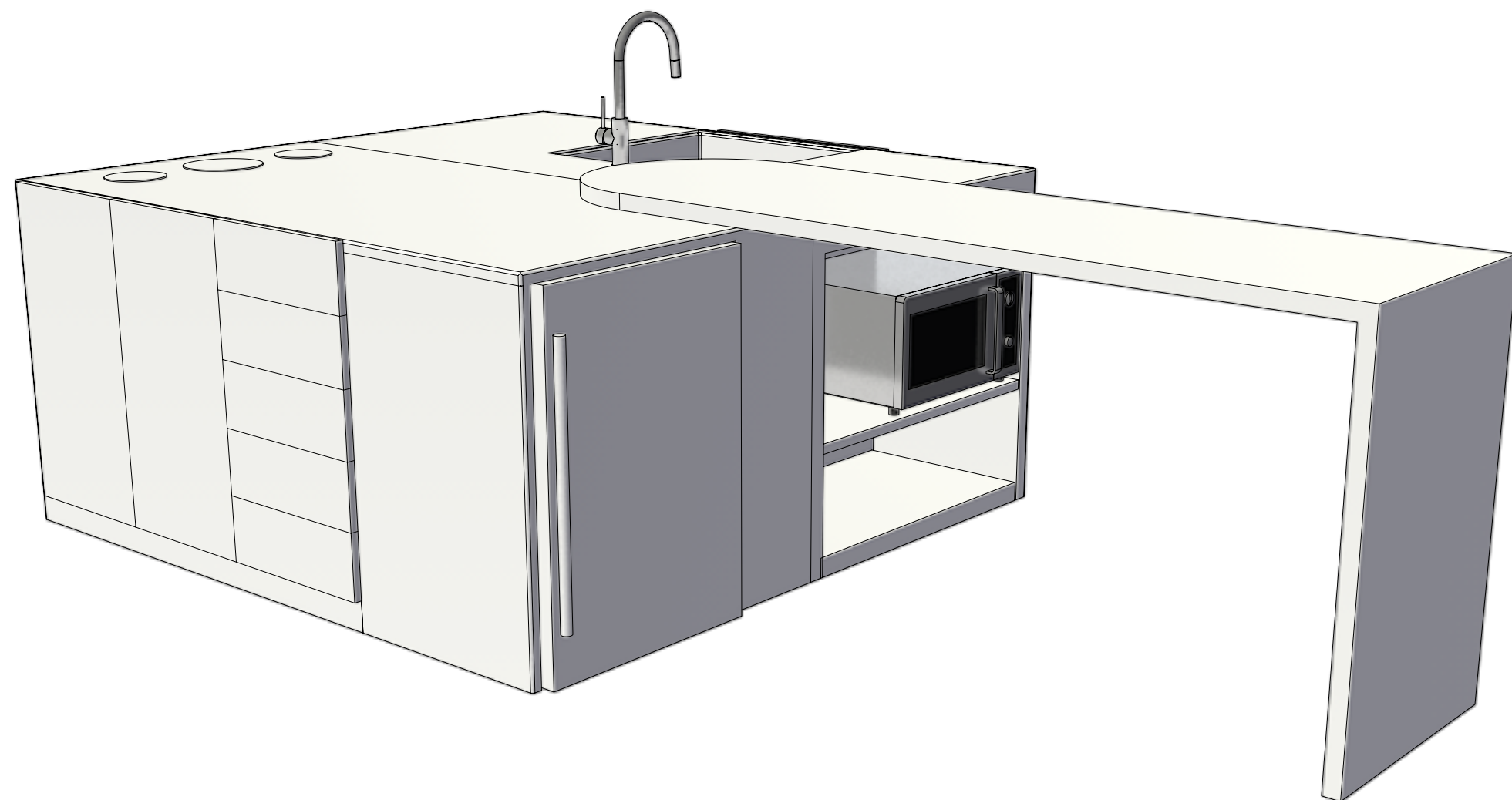


**NOTE:**

- The color of the kitchen island is [black of night] in Sherwin-Williams color swatches, the number SW 6993
- Or 2) Anchors Aweigh (SW 9179)
- Or 3) Charcoal Blue (SW 2739)
- Extended table is white - the same color as the roof unit, See 3-3

**Reference:** color scheme - dark ebony grey with white

**B-6 Kitchen island: perspective - refrigerator/microwave**



**Song of Me**  
by Mai Le and Peter Ton

**Creative Team:**

- Directing: Peter Ton
- Costume Design: Jaymee Ngerwicht
- Lighting Design: Janessa A. Harris
- Prop: Jodi Bobrovsky
- Sound Design: Isaiah Parnell
- Technical Directing: Joel Burkholder
- Scenic Design: Inseung Park
- Drafting: Inseung Park

**Stages Repertory Theatre**

**Title:**

Kitchen island: perspective  
Paint elevation

**Scale:**

3/8" = 1'-0"

**Date:**

April 4, 2022



S.D. 13829  
SCENIC DESIGNER  
SIGNATURE *Inseung Park*