

**The Elaborate
Entrance of
Chad Deity**

Directing: Jerry Ruiz
 Costume Design: Harry Nadal
 Lighting Design: Bill Rios
 Projection Design: John Erickson
 Sound Design: Philip Owen
 Technical Directing: Austin Manning
 Scenic Design: Inseung Park
 Drafting: Inseung Park

ZACH Theatre

Ground Plan (16' wide ring)

Scale: 1/4" = 1'-0"

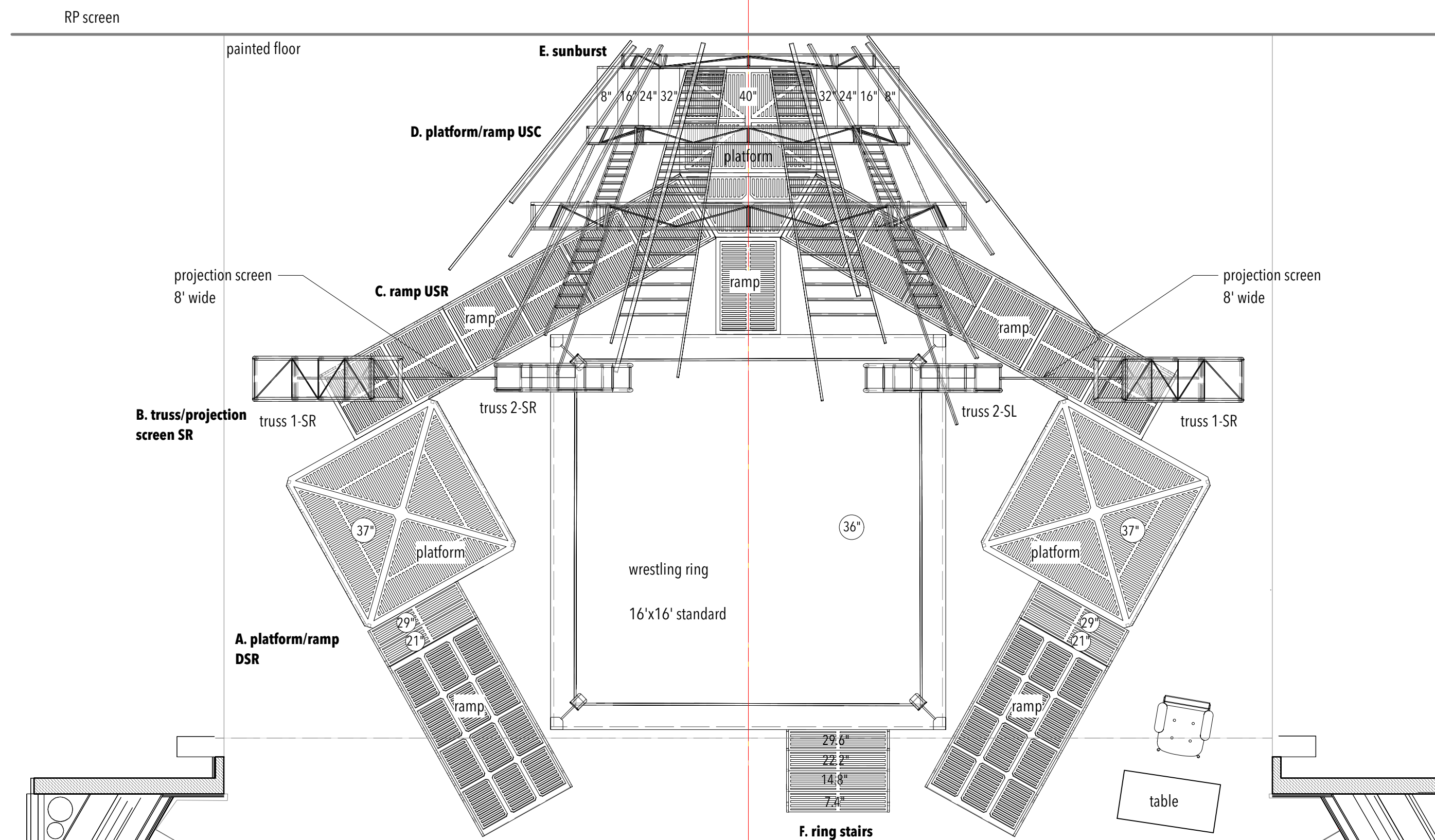
Date: December 3, 2021



S.D. 13829
 SCENIC DESIGNER

SIGNATURE *Inseung Park*

36	OPEN
35	OPEN
34	OPEN
33	OPEN
32	OPEN
31	OPEN
30	OPEN
29	OPEN
28	
27	ELECTRIC 4
26	FULL STAGE BLACK
25	
24	OPEN
23	OPEN
22	OPEN
21	
20	
19	ELECTRIC 3
18	
17	
16	OPEN
15	
14	OPEN
13	OPEN
12	
11	ELECTRIC 2
10	OPEN
9	OPEN
8	
7	OPEN
6	OPEN
5	OPEN
4	OPEN
3	ELECTRIC 1
2	OPEN
1	



**The Elaborate
Entrance of
Chad Deity**

Directing: Jerry Ruiz
Costume Design: Harry Nadal
Lighting Design: Bill Rios
Projection Design: John Erickson
Sound Design: Philip Owen
Technical Directing: Austin Manning
Scenic Design: Inseung Park
Drafting: Inseung Park

ZACH Theatre

Section (16' wide ring)

Scale: 1/4"=1'-0"

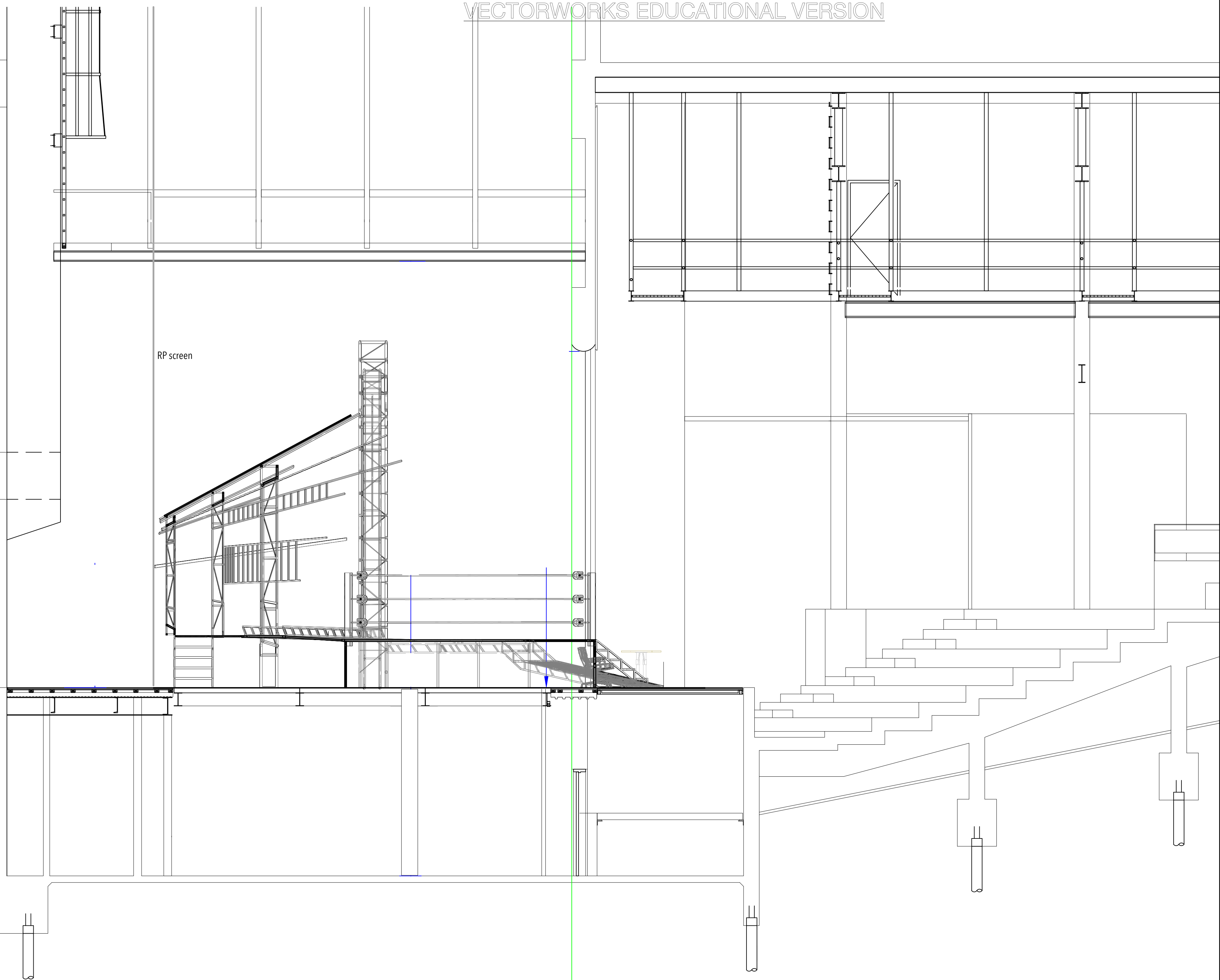
Date: December 3, 2021



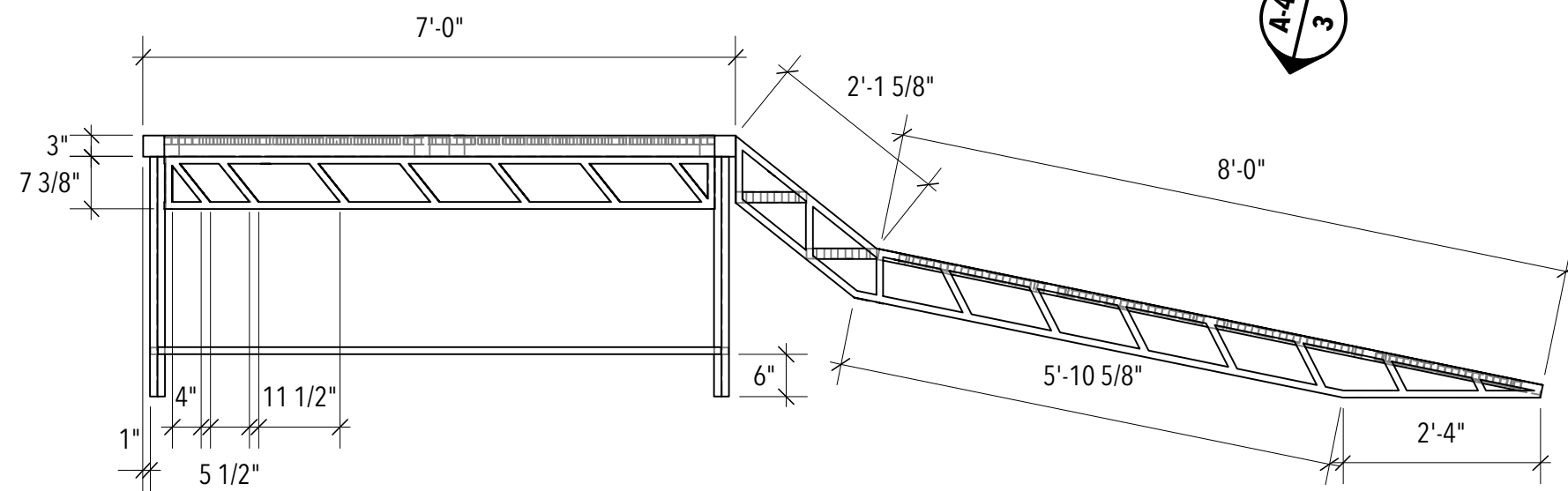
S.D. 13829
SCENIC DESIGNER

SIGNATURE *Inseung Park*

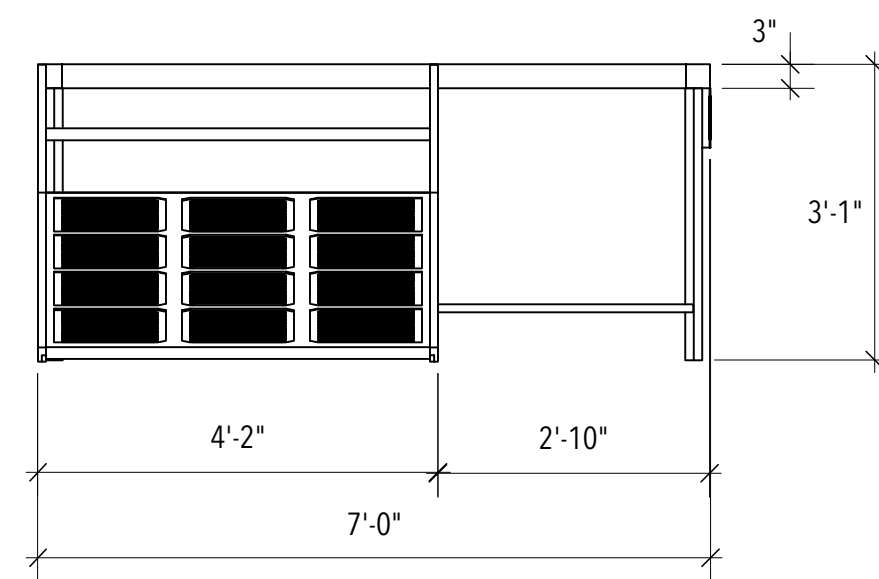
RP screen



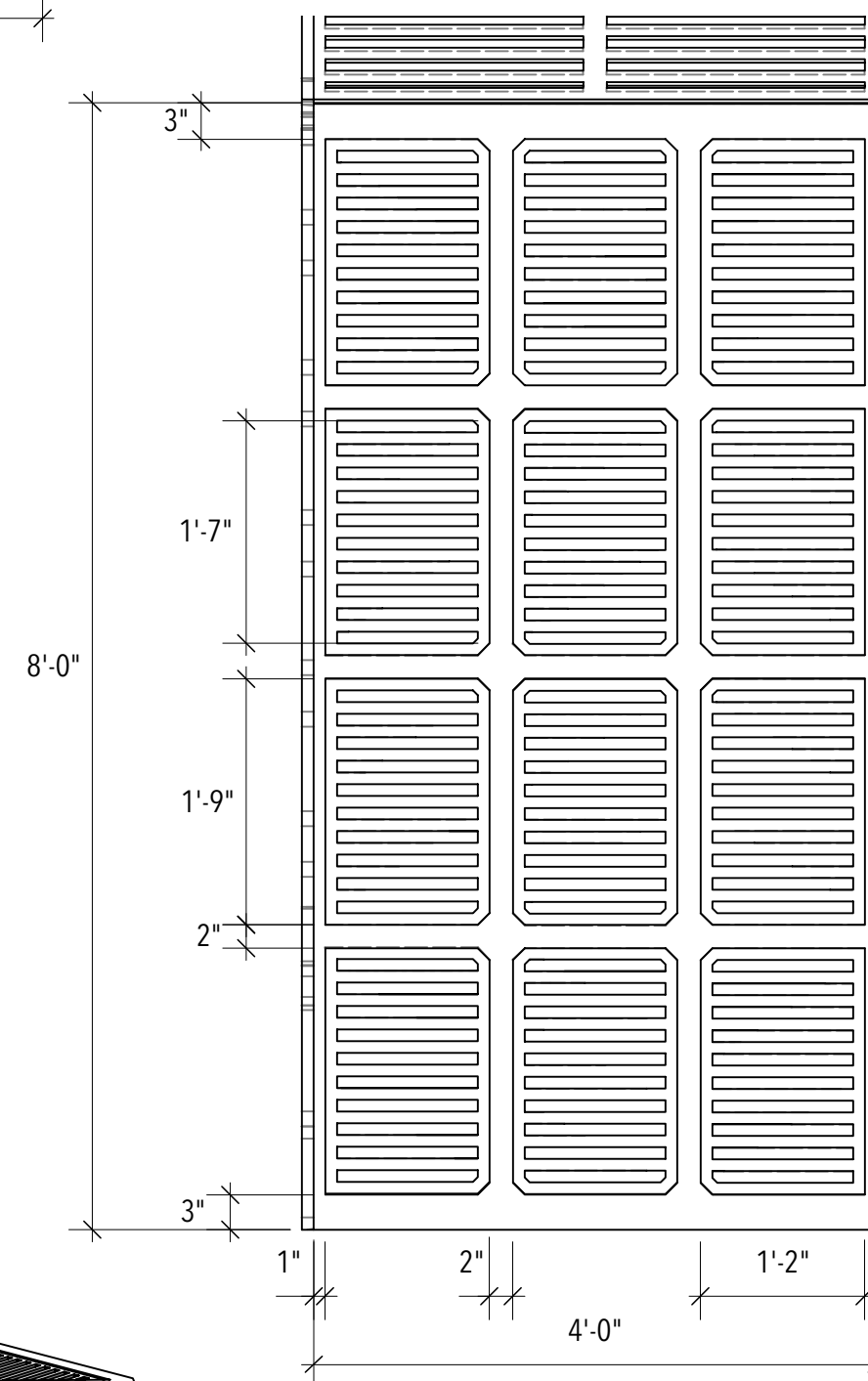
A-1 platform/ramp DSR: front



A-3 platform/ramp DSR: right



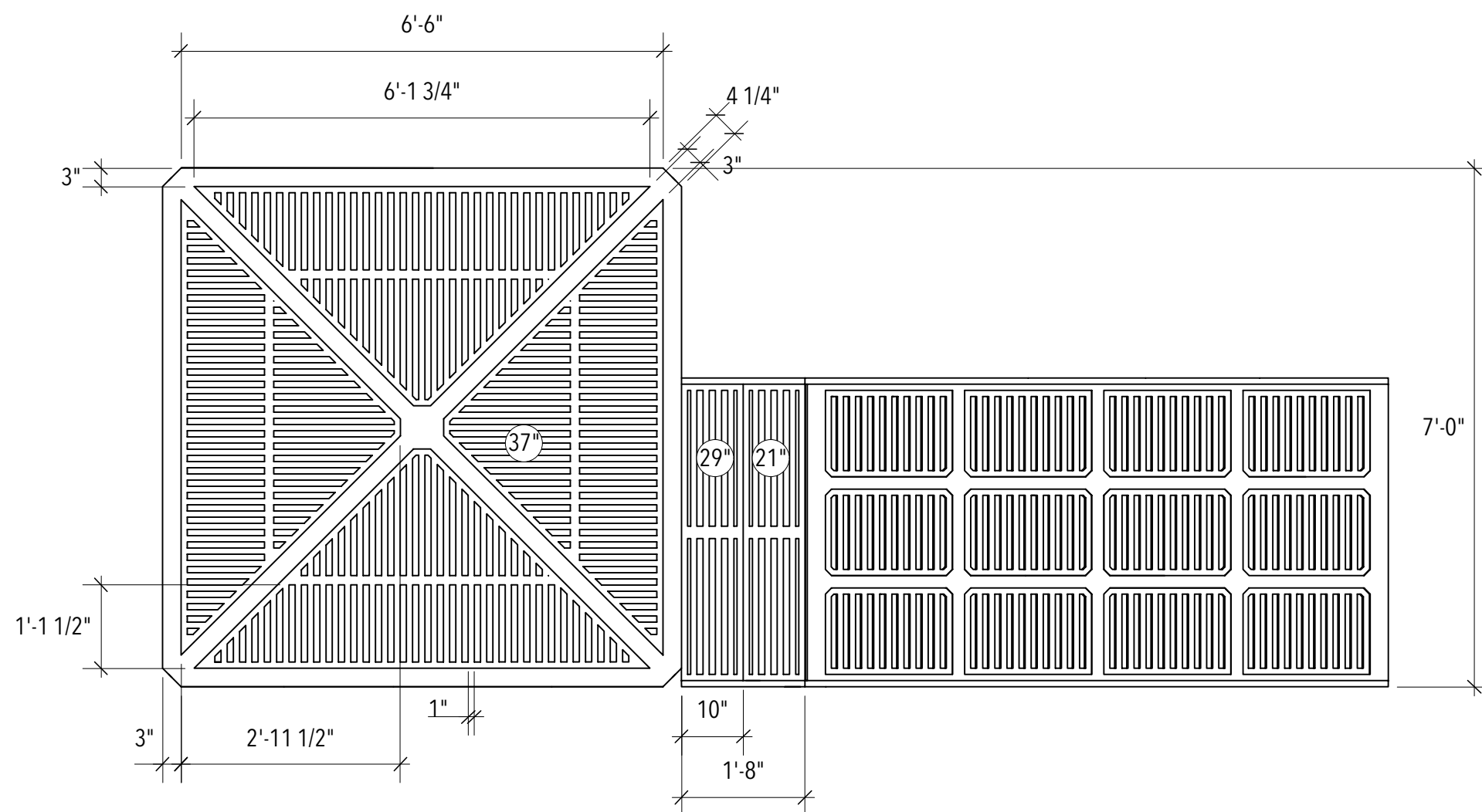
**A-4 ramp: elevation
scale: 3/4"=1'-0"**



NOTE:

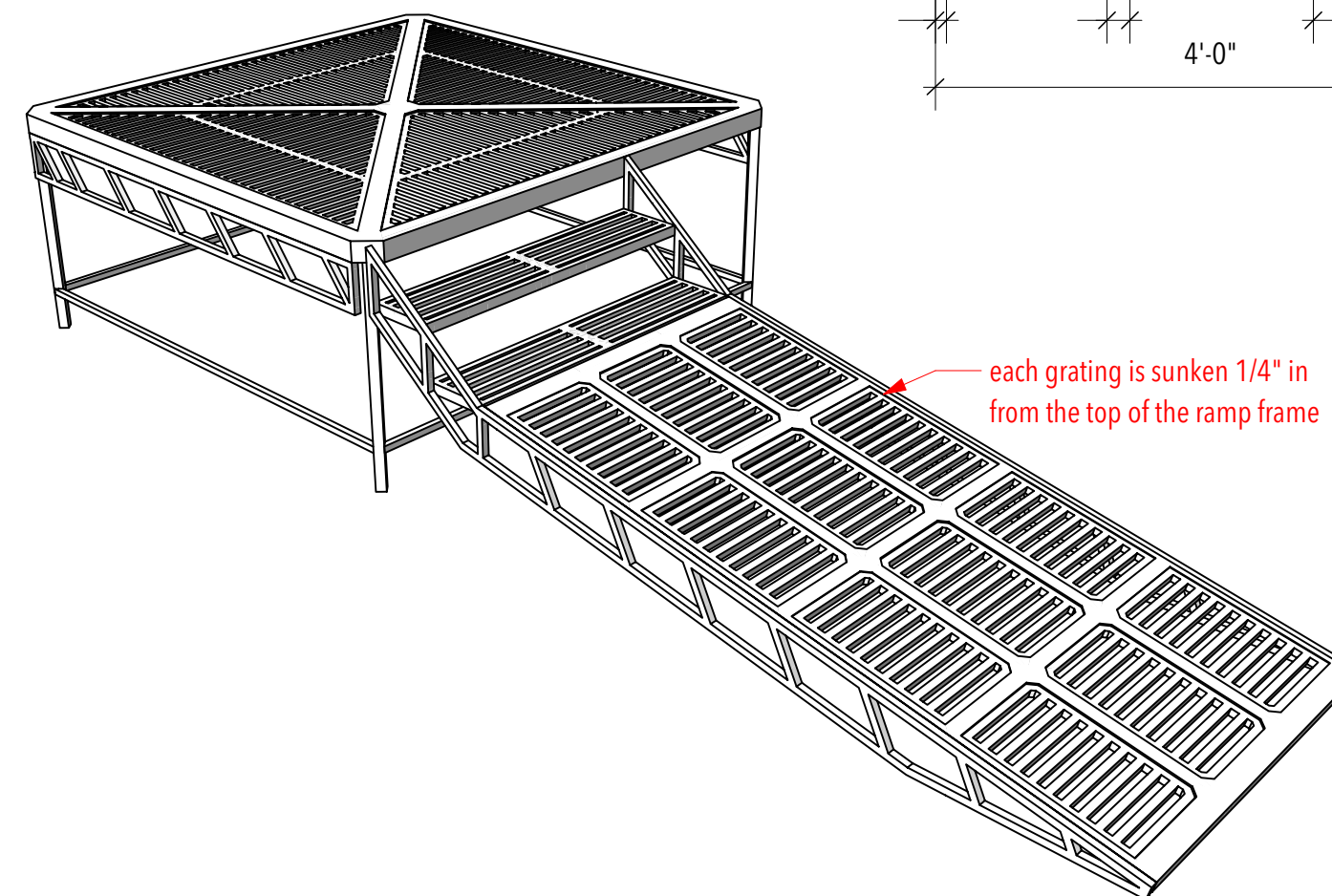
- the metal grille under the platform/ramp is the same pattern and dimension, all 1" steel tube
- platform/ramp grating is metal look
- if using a steel material, leave it as it looks without painting: law material is good
- the platform/ramp DSL is a mirror image with DSR

A-2 platform/ramp DSR: plan



the grating is 1" steel tube and 1" spacing between

A-5 platform/ramp DSR: perspective



**The Elaborate
Entrance of
Chad Deity**

Directing: Jerry Ruiz
 Costume Design: Harry Nadal
 Lighting Design: Bill Rios
 Projection Design: John Erickson
 Sound Design: Philip Owen
 Technical Directing: Austin Manning
 Scenic Design: Inseung Park
 Drafting: Inseung Park

ZACH Theatre

A. platform/ramp DSR

Scale: 1/2"=1'-0"

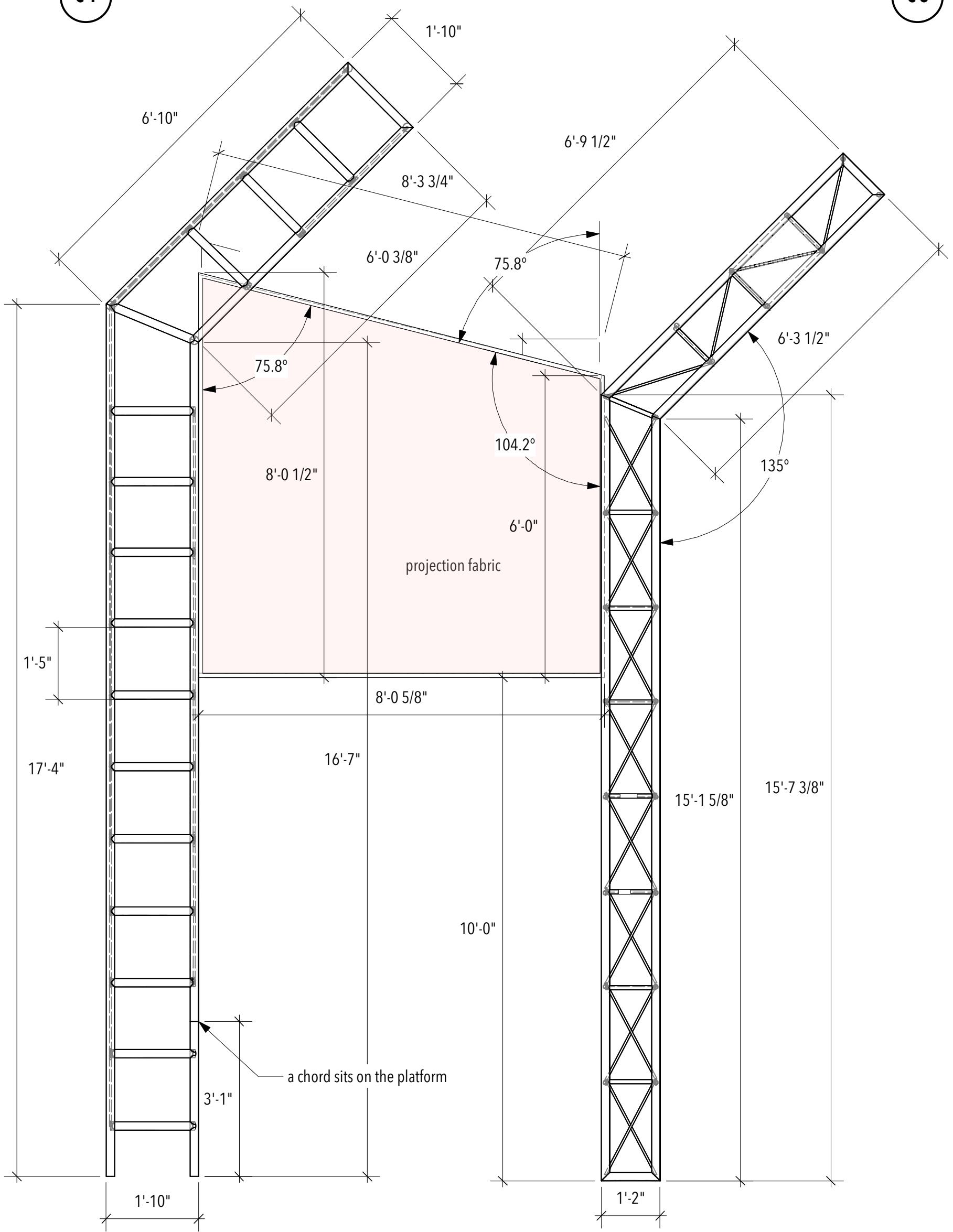
Date: December 3, 2021



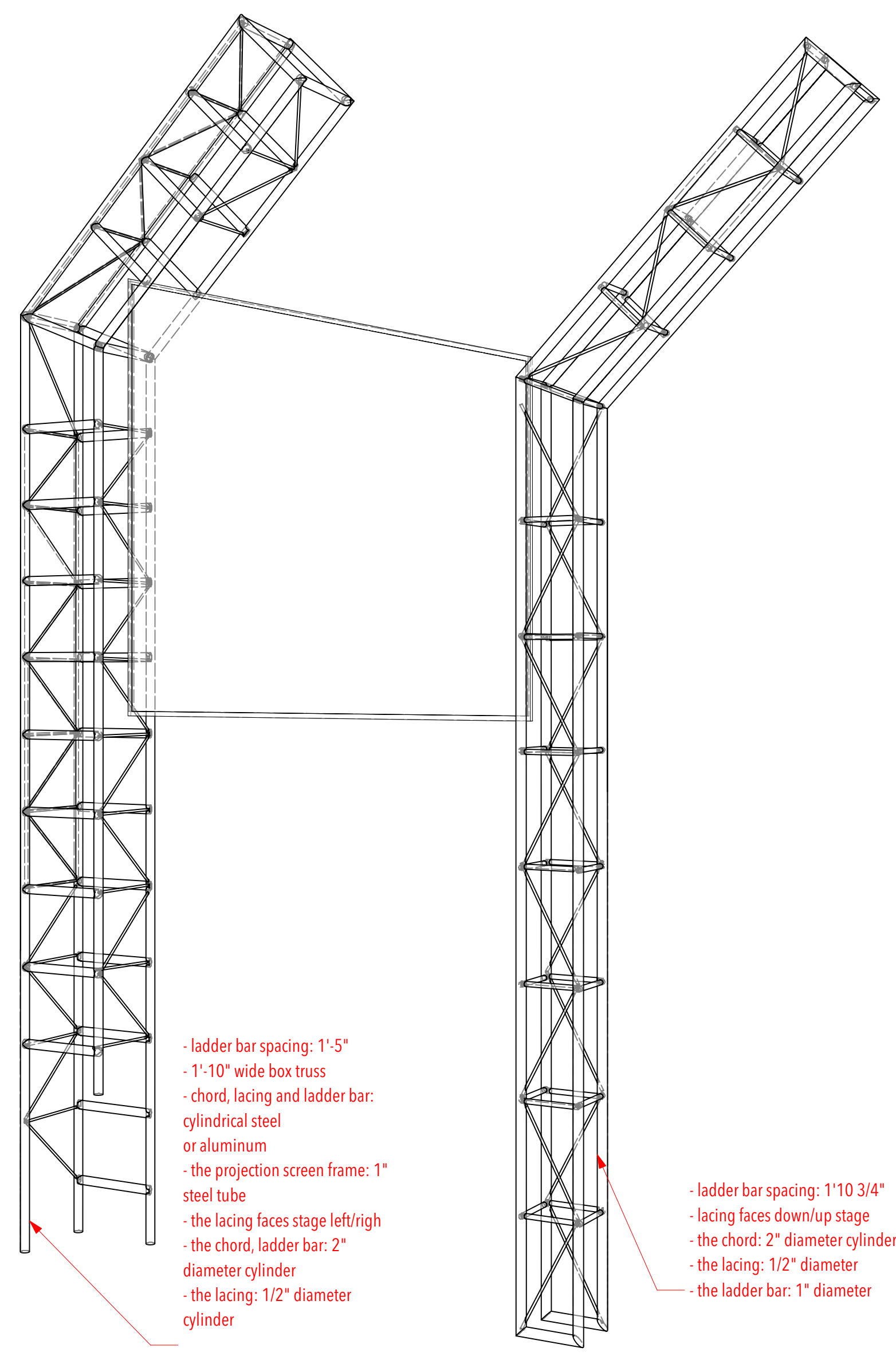
S.D. 13829
 SCENIC DESIGNER

SIGNATURE *[Signature]*

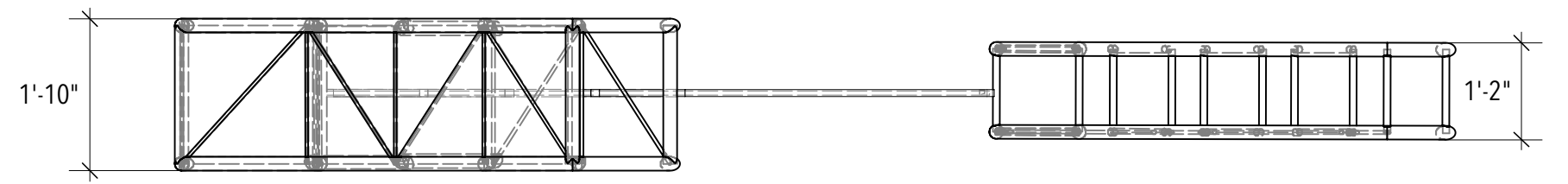
C-1 truss/projection screen SR: front



C-3 truss/projection screen SR: perspective



C-2 truss/projection screen SR: plan



truss/projection screen SL is a mirror image with SR

The Elaborate Entrance of Chad Deity

Directing: Jerry Ruiz
 Costume Design: Harry Nadal
 Lighting Design: Bill Rios
 Projection Design: John Erickson
 Sound Design: Philip Owen
 Technical Directing: Austin Manning
 Scenic Design: Inseung Park
 Drafting: Inseung Park

ZACH Theatre

C. truss/projection screen SR

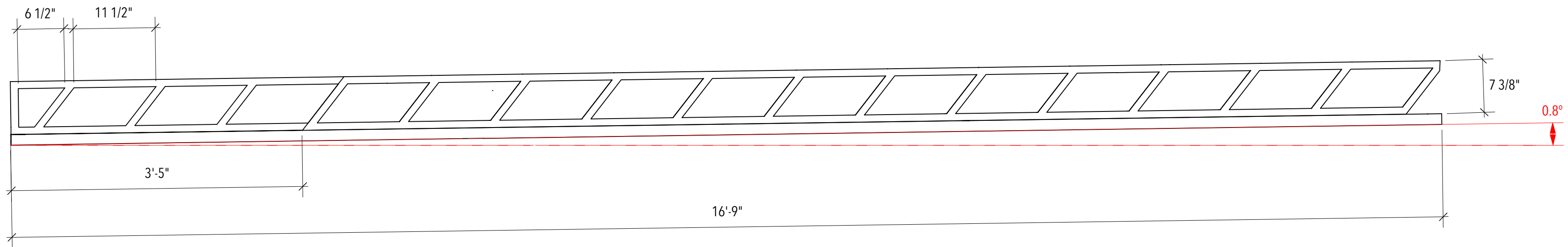
Scale: 1/2"=1'-0"

Date: December 3, 2021

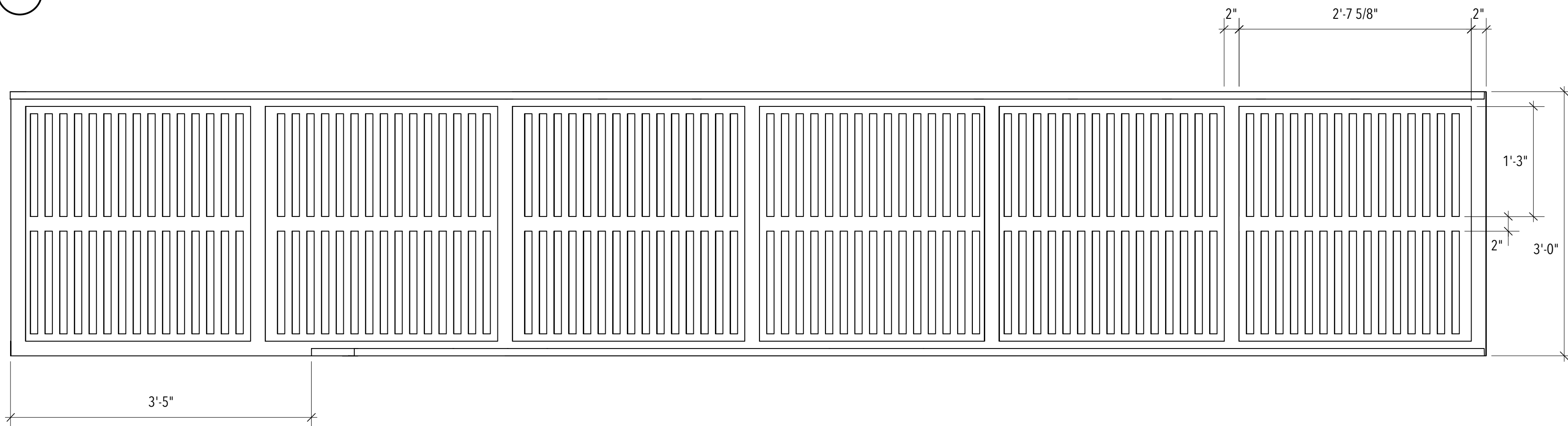


S.D. 13829
 SCENIC DESIGNER
 SIGNATURE *[Signature]*

D-1 ramp USR: front



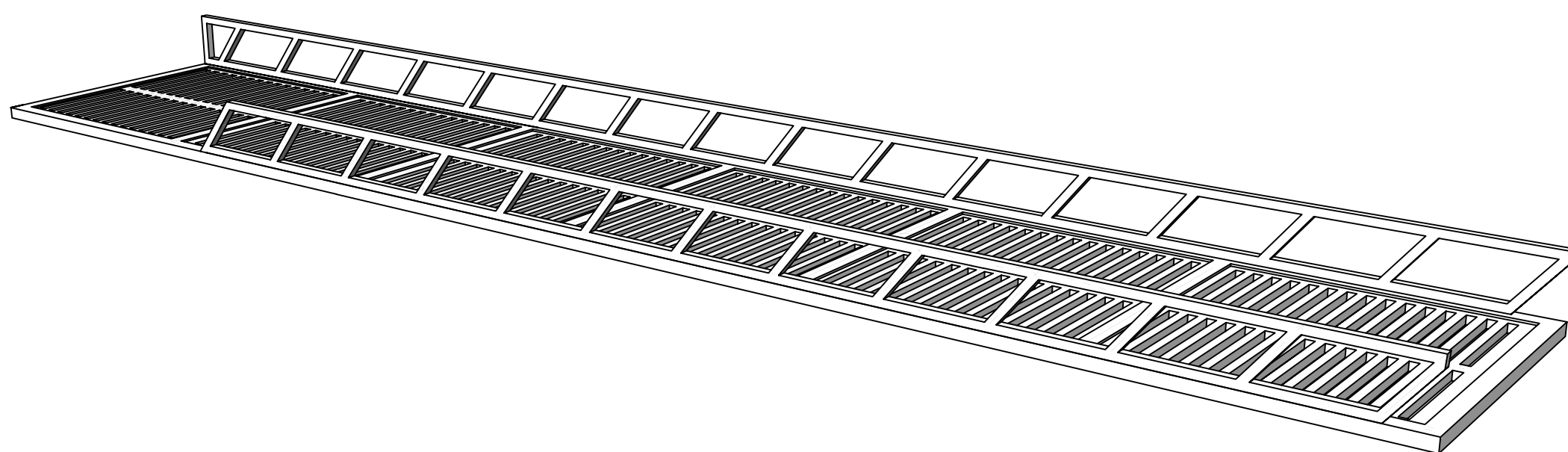
D-2 ramp USR: plan



NOTE:

- each end is connected with a platform DSR and USC
- if possible, no post to support the ramp: directly connected with platforms
- ramp USL is a mirror image with USR
- the grating is 1" steel tube, 1" spacing between
- use a proper expanded steel to be closer to the design

D-3 ramp USR: perspective



The Elaborate Entrance of Chad Deity

Directing: Jerry Ruiz
 Costume Design: Harry Nadal
 Lighting Design: Bill Rios
 Projection Design: John Erickson
 Sound Design: Philip Owen
 Technical Directing: Austin Manning
 Scenic Design: Inseung Park
 Drafting: Inseung Park

ZACH Theatre

D. ramp USR

Scale: 1"=1'-0"

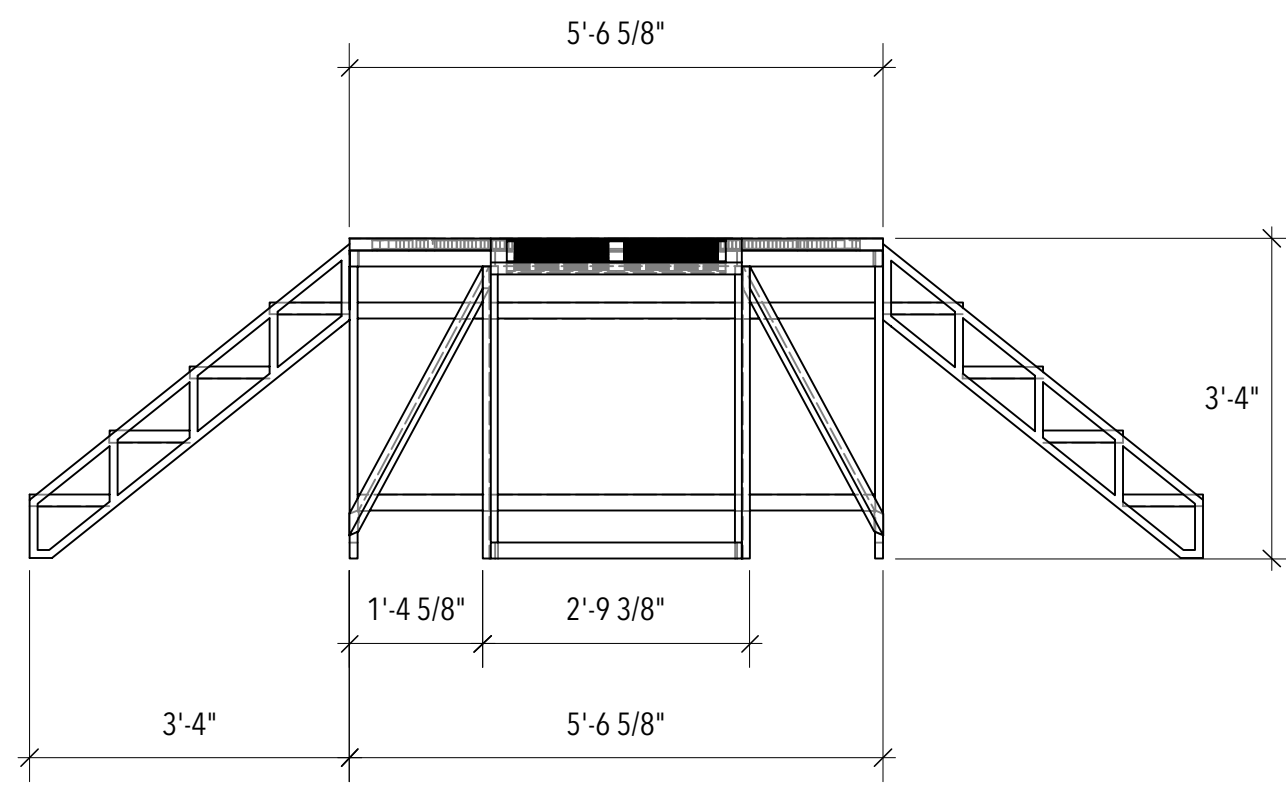
Date: December 3, 2021



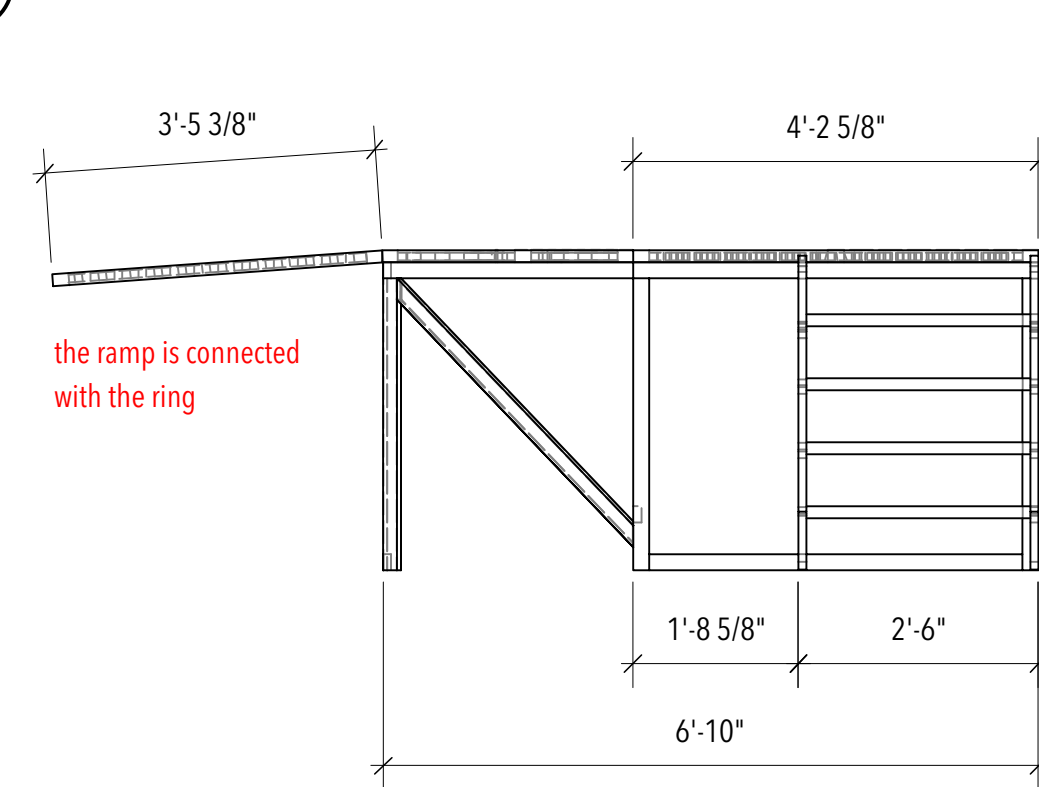
S.D. 13829
 SCENIC DESIGNER

SIGNATURE *[Signature]*

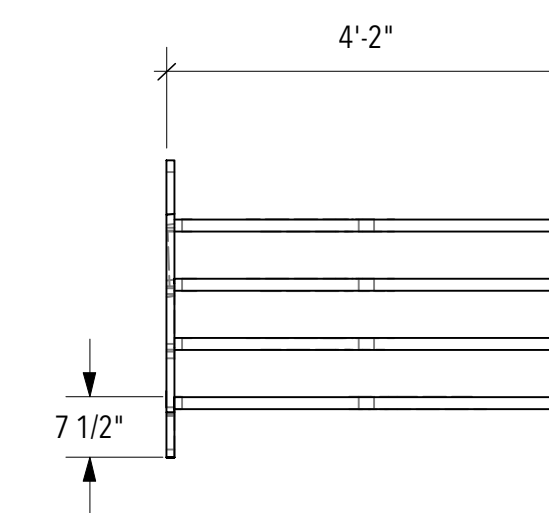
E-1 platform/ramp USC: front



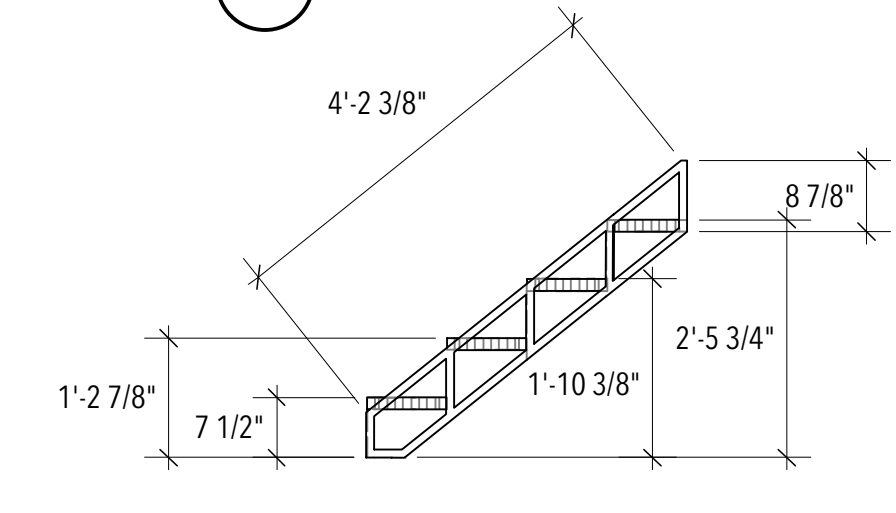
E-3 platform/ramp USC: right



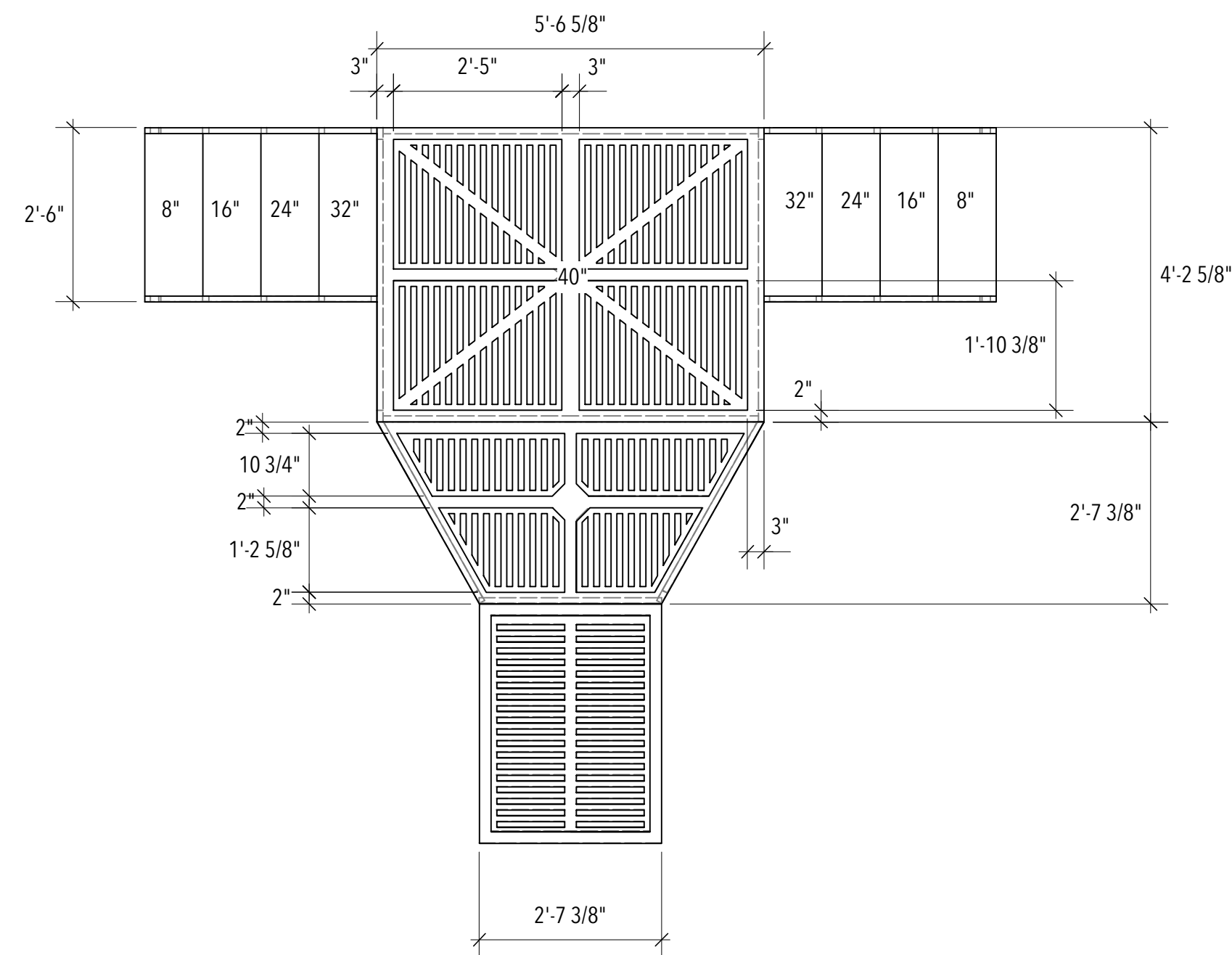
B-1 ring stairs: front



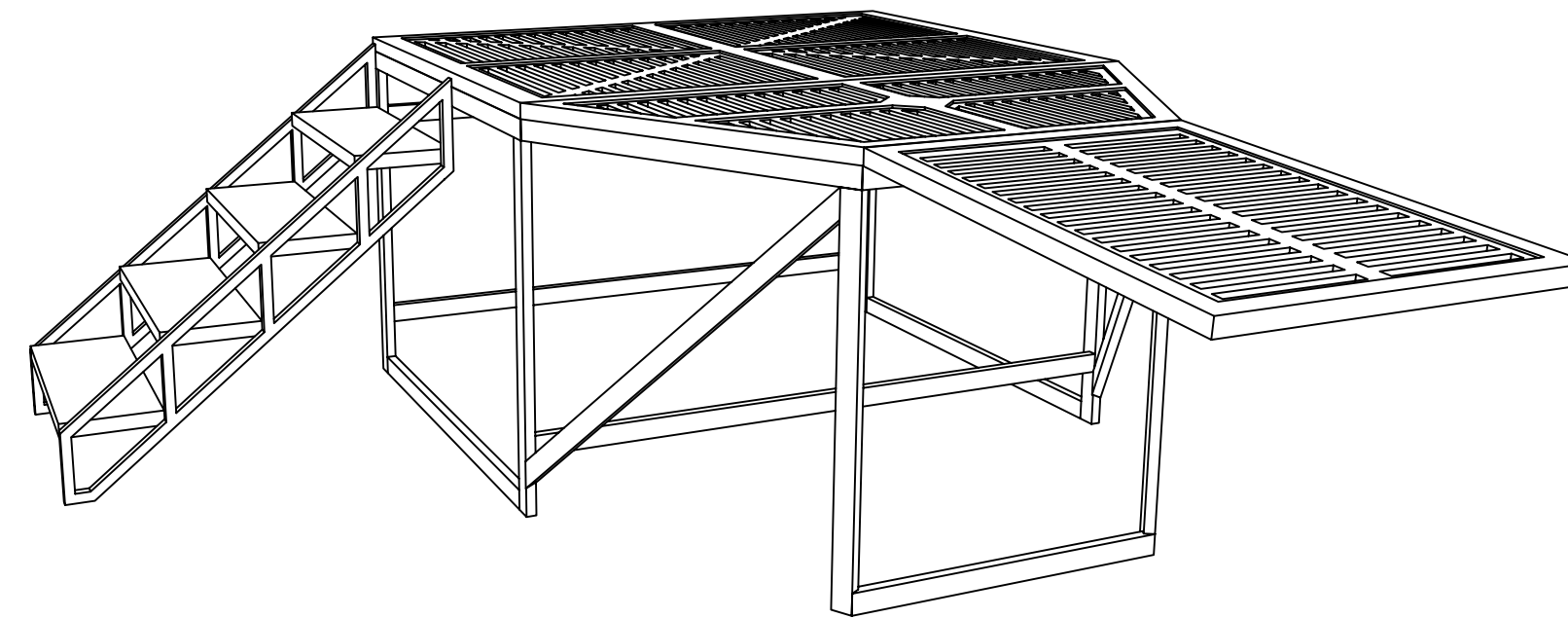
B-3 ring stair: right



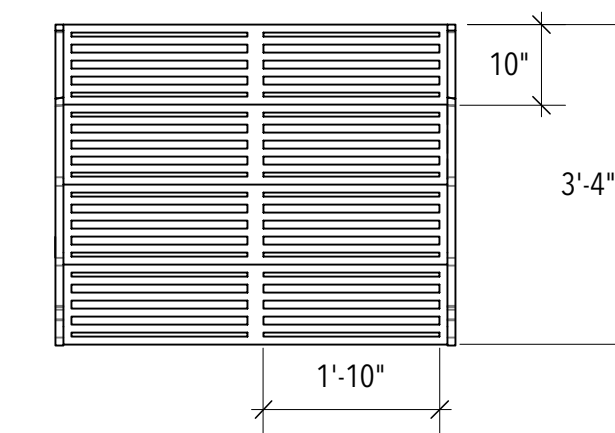
E-2 platform/ramp USC: plan



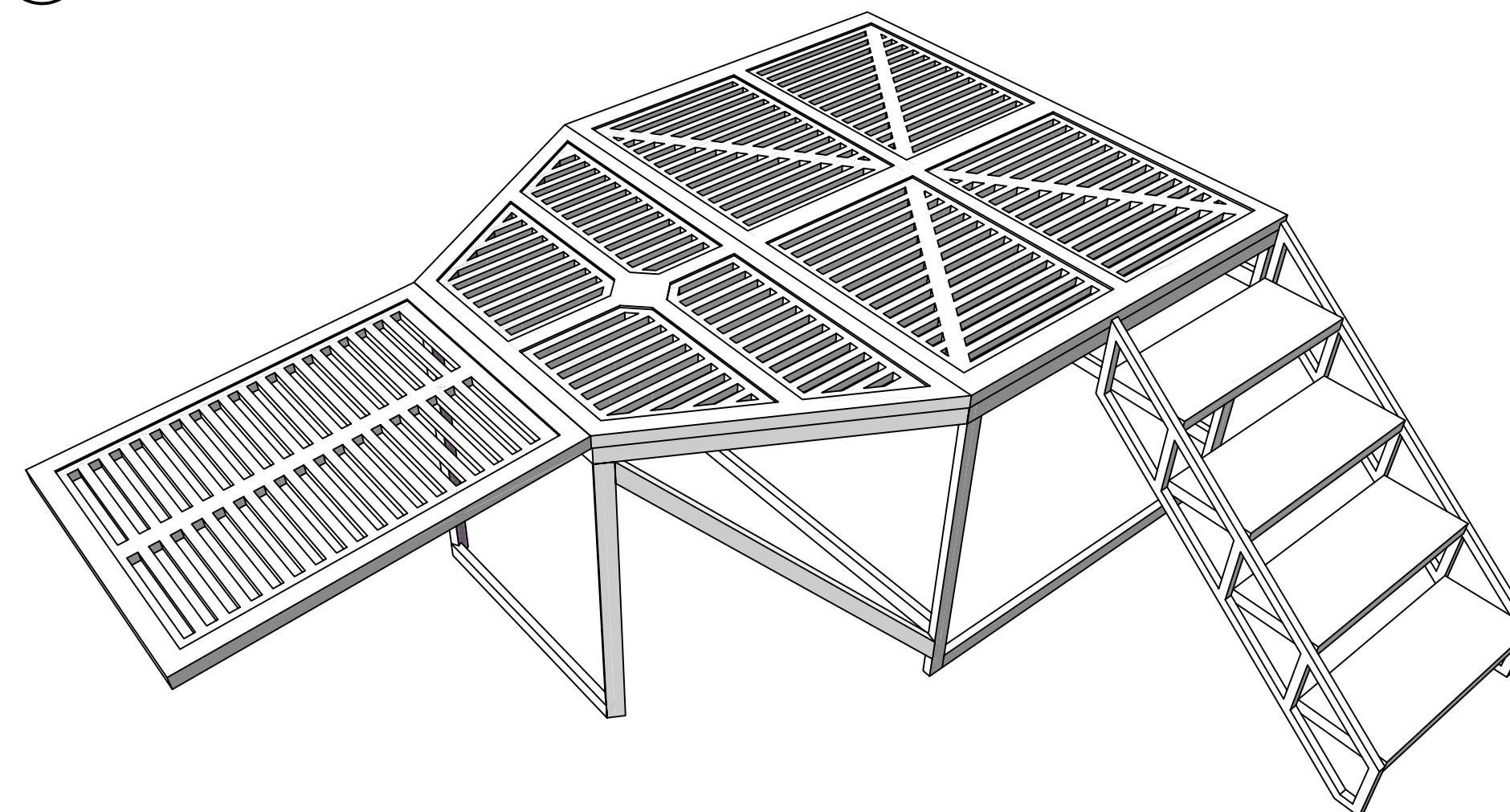
E-4 platform/ramp USC: perspective 1



B-2 ring stairs: plan



E-5 platform/ramp USC: perspective 2



**The Elaborate
Entrance of
Chad Deity**

Directing: Jerry Ruiz
 Costume Design: Harry Nadal
 Lighting Design: Bill Rios
 Projection Design: John Erickson
 Sound Design: Philip Owen
 Technical Directing: Austin Manning
 Scenic Design: Inseung Park
 Drafting: Inseung Park

ZACH Theatre

**E. platform/ramp USC
B. ring stairs**

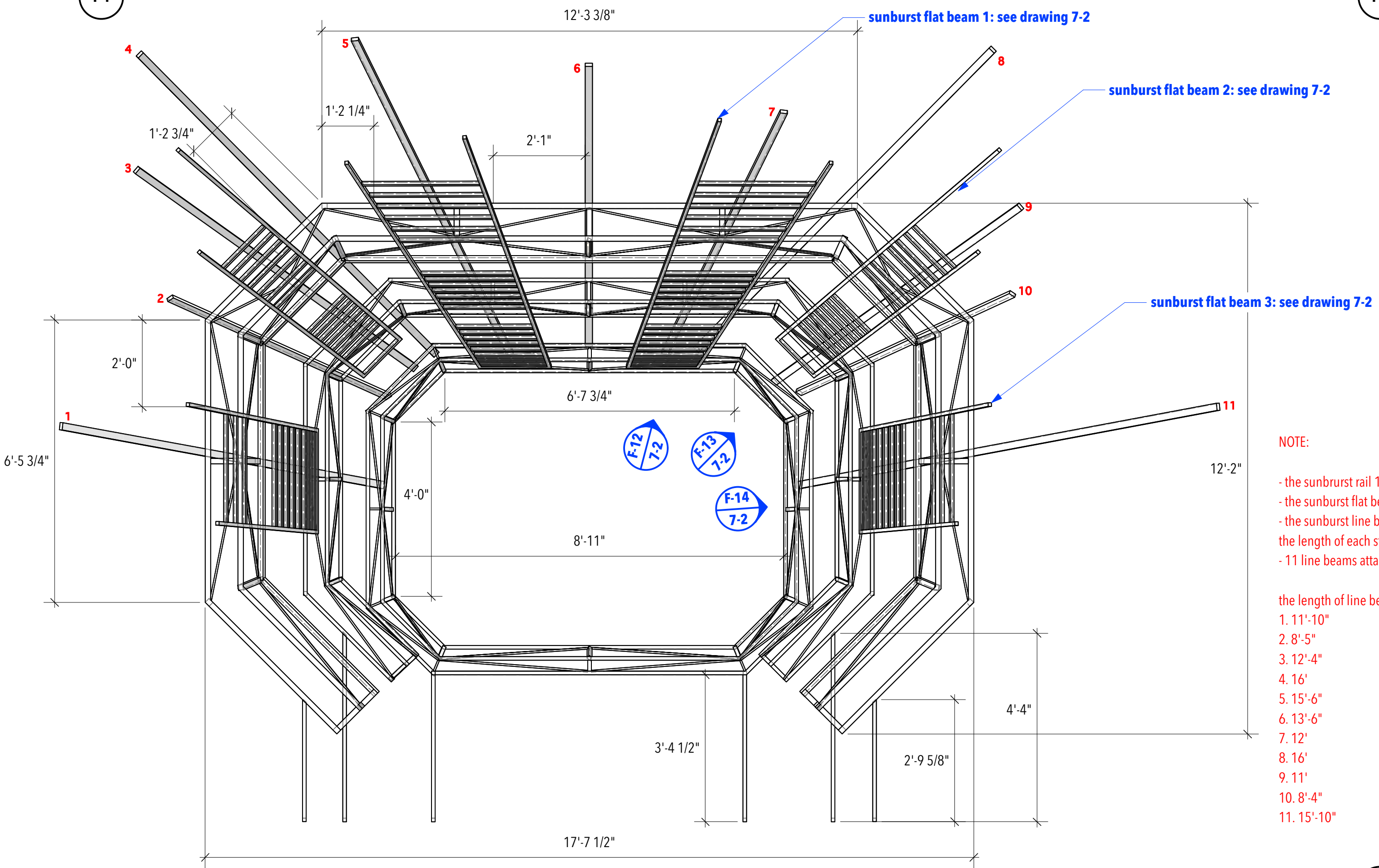
Scale: 1/2"=1'-0"

Date: December 3, 2021

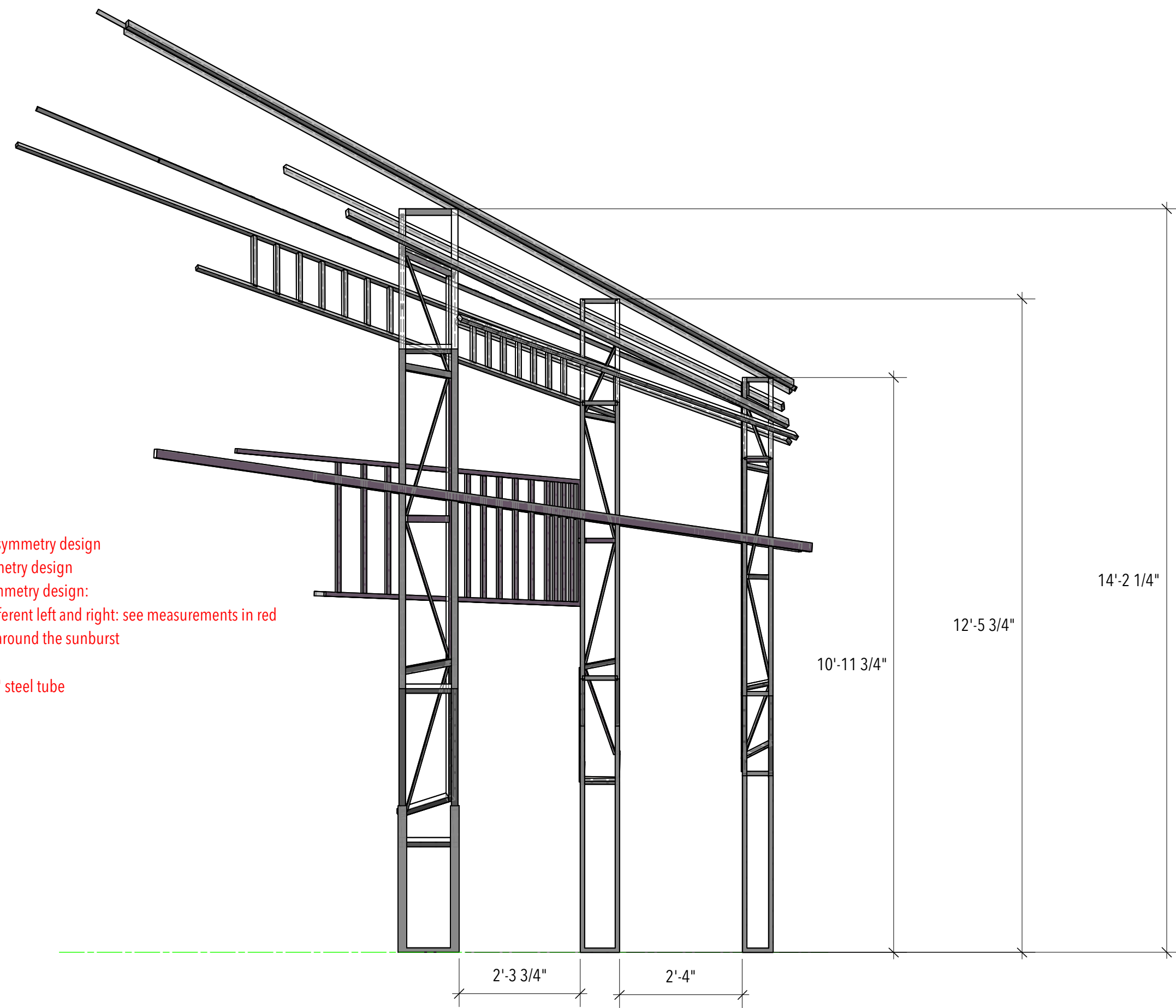


S.D. 13829
 SCENIC DESIGNER
 SIGNATURE *[Signature]*

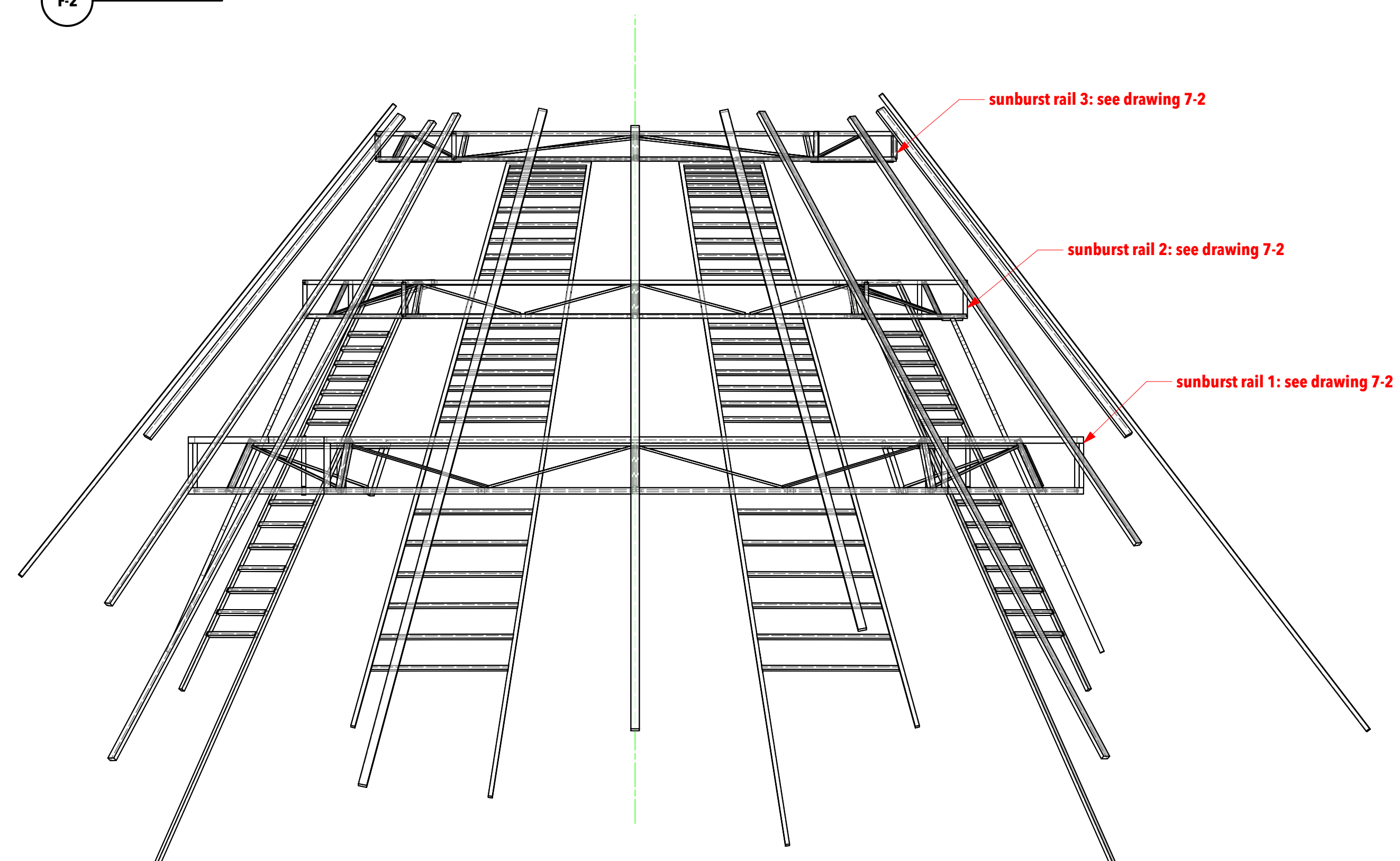
F-1 sunburst: front



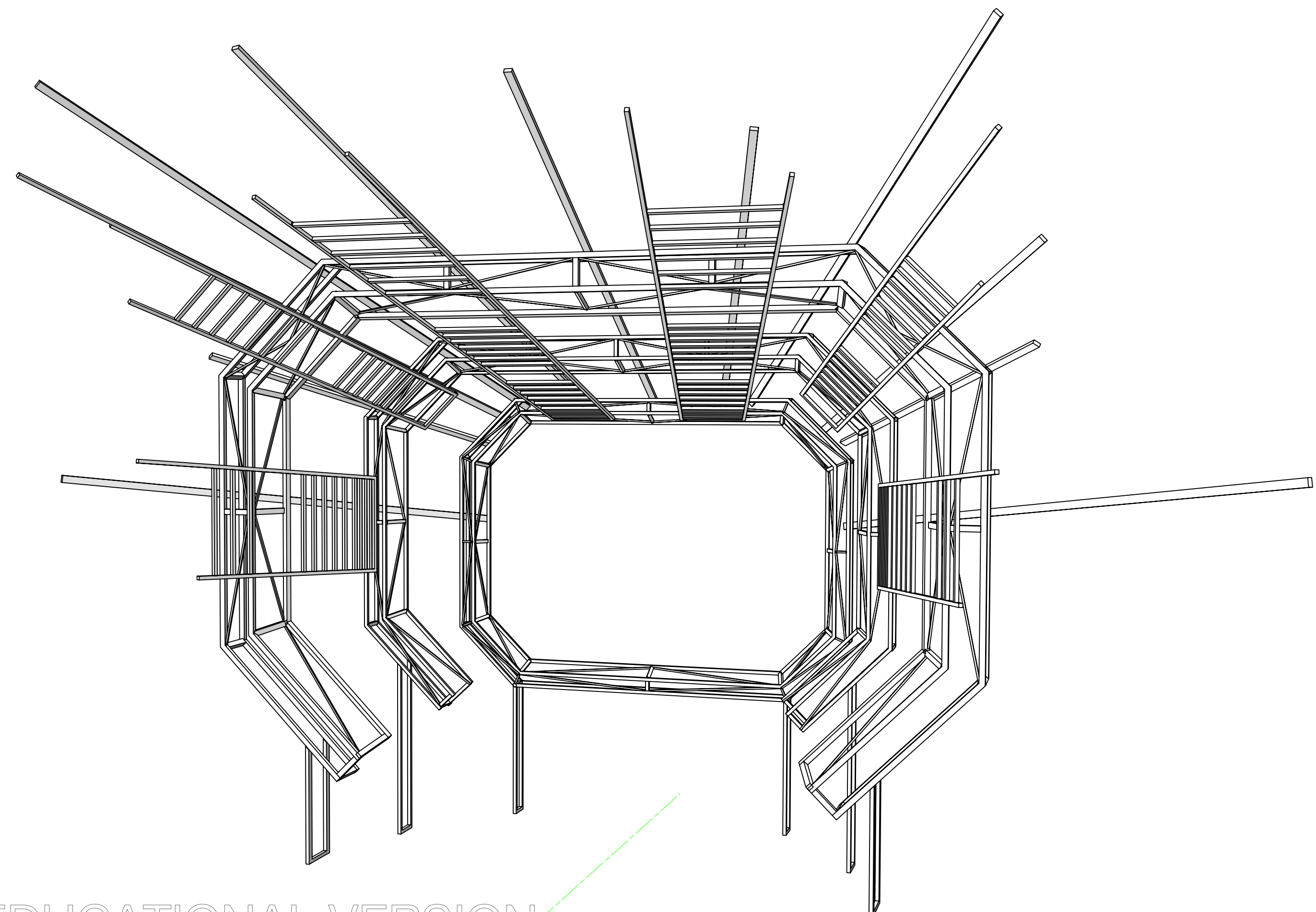
F-3 sunburst: right



F-2 sunburst: plan



F-4 sunburst: perspective



The Elaborate Entrance of Chad Deity

Directing: Jerry Ruiz
 Costume Design: Harry Nadal
 Lighting Design: Bill Rios
 Projection Design: John Erickson
 Sound Design: Philip Owen
 Technical Directing: Austin Manning
 Scenic Design: Inseung Park
 Drafting: Inseung Park

ZACH Theatre

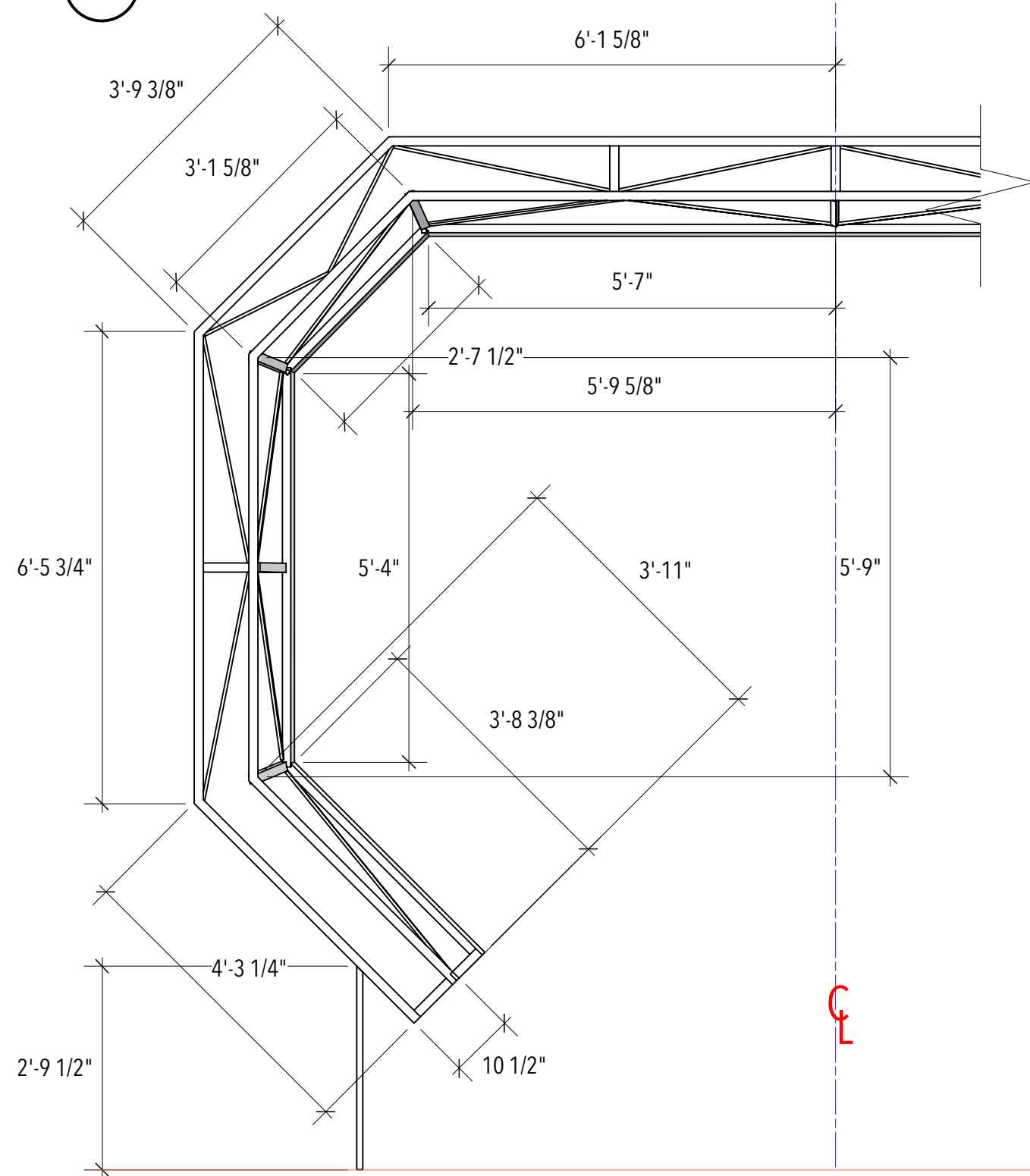
F. sunburst

Scale: 1/2"=1'-0"

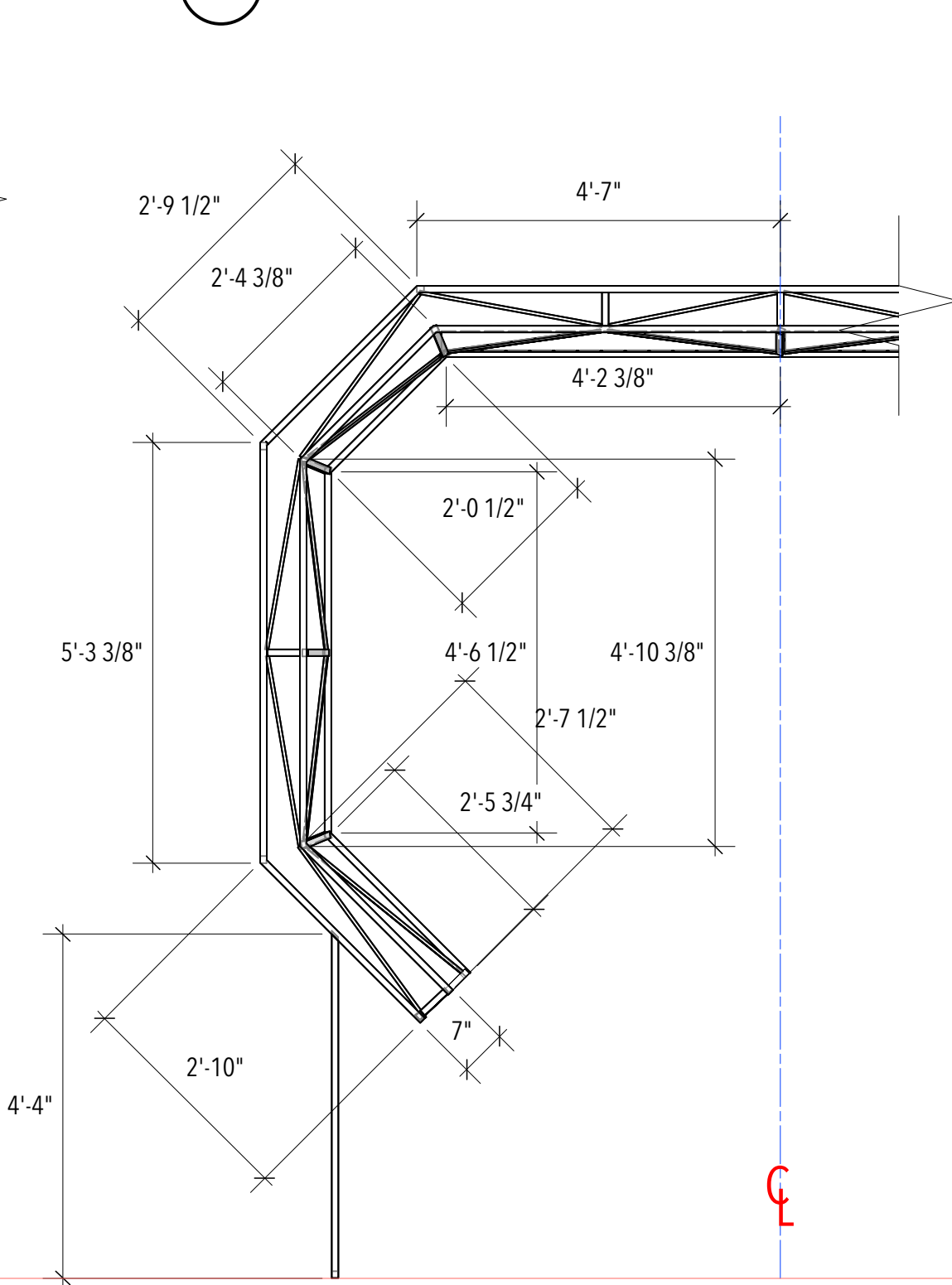
Date: December 3, 2021

S.D. 13829
 SCENIC DESIGNER
 SIGNATURE *Inseung Park*

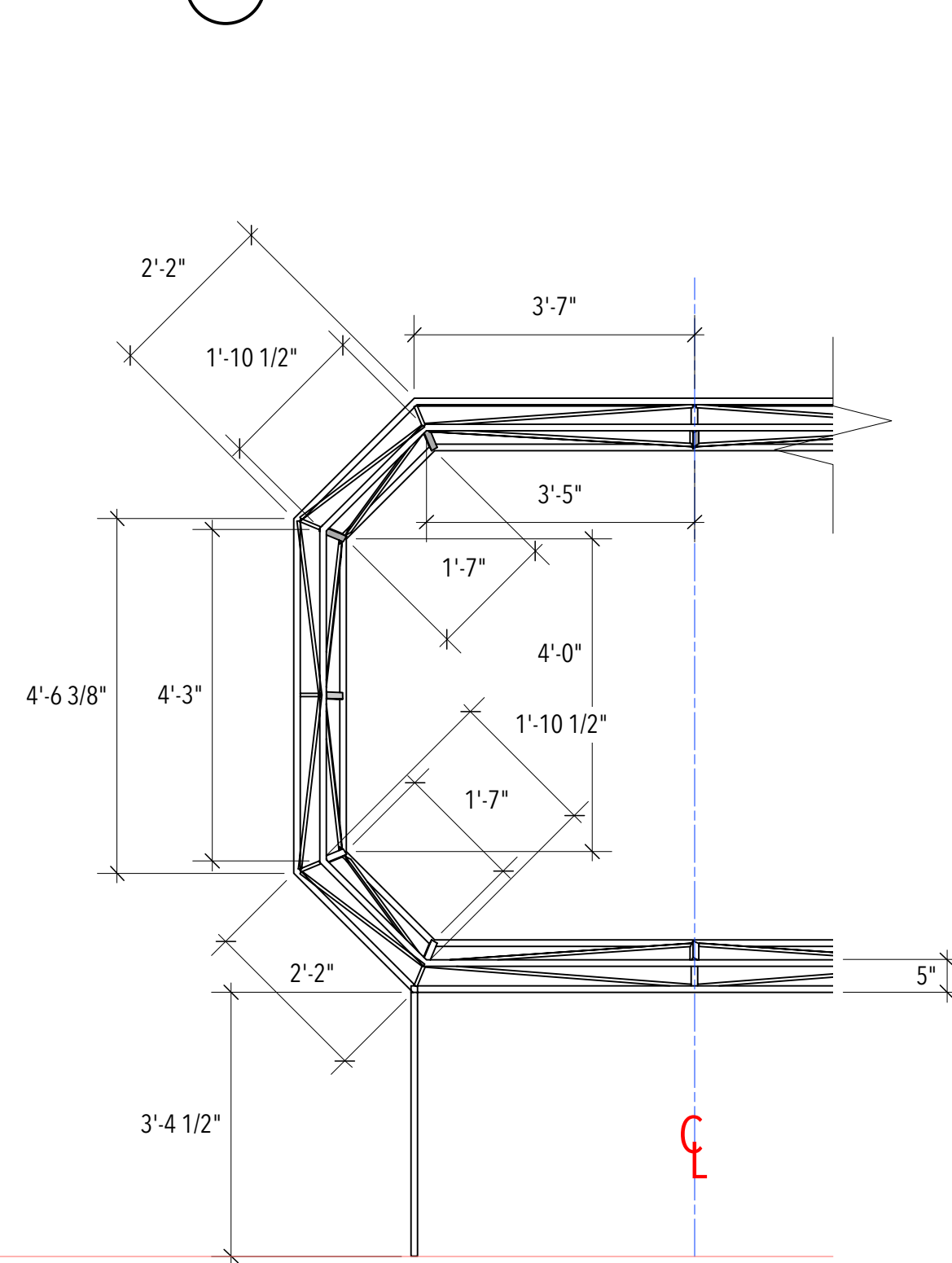
F-5 sunburst rail 1: front



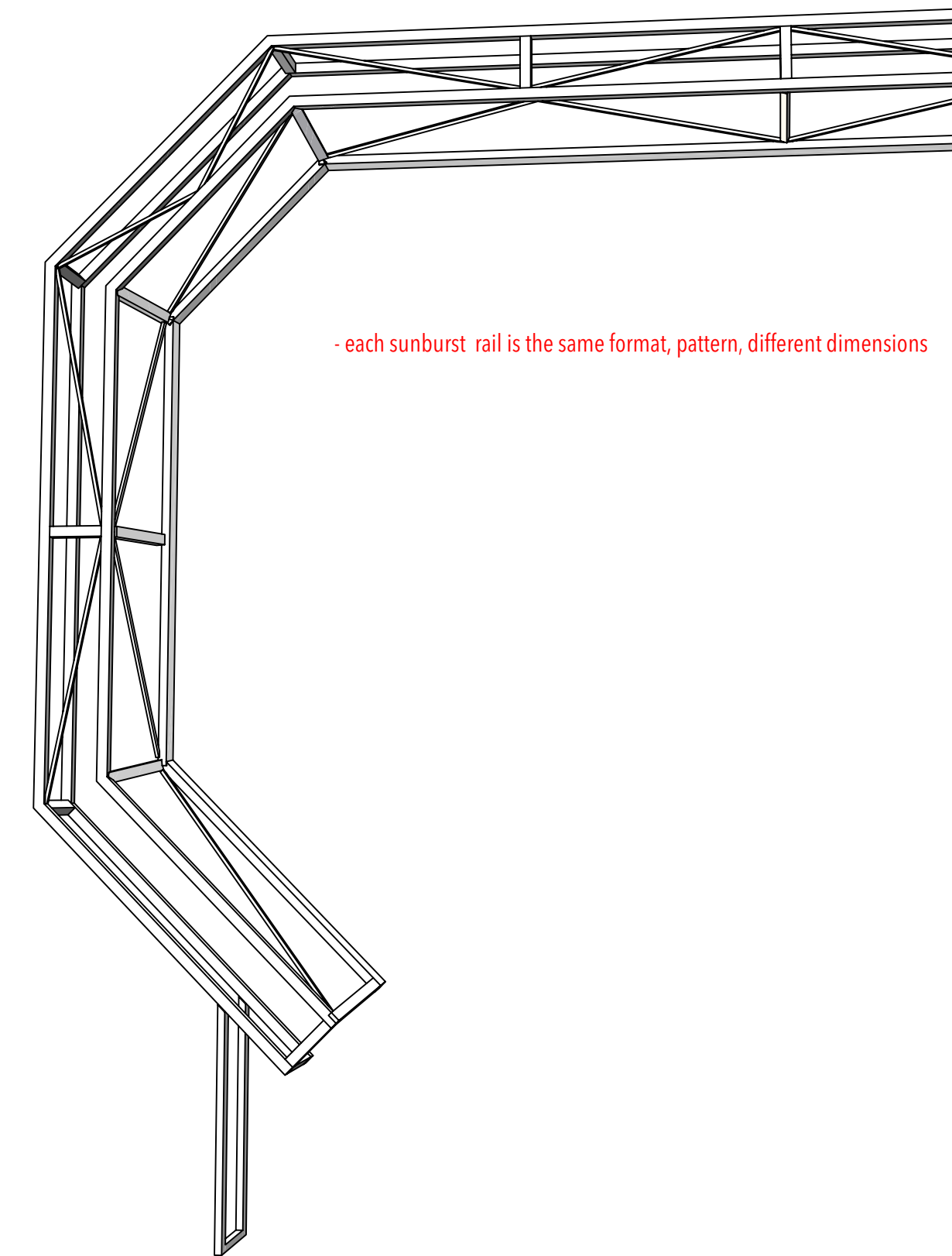
F-7 sunburst rail 2: front



F-9 sunburst rail 3: front



F-11 sunburst rail 1: perspective

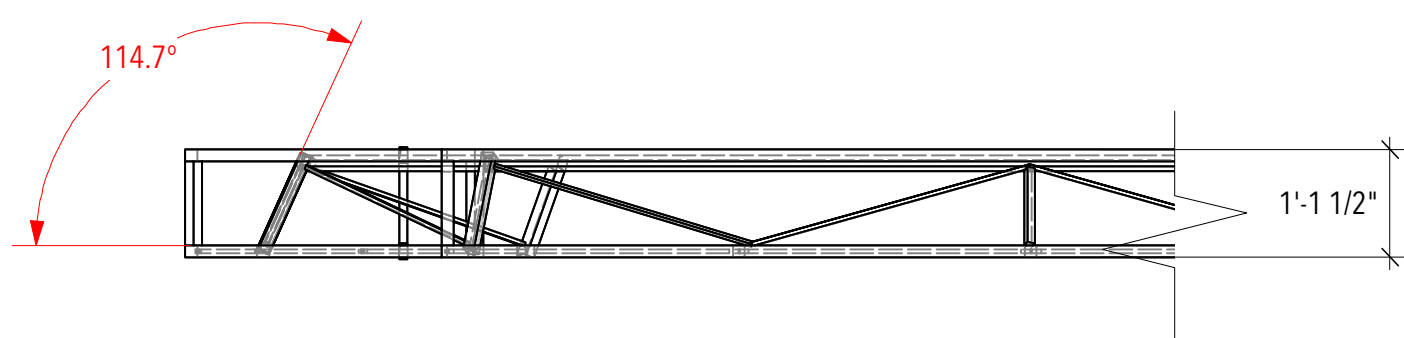


- each sunburst rail is the same format, pattern, different dimensions

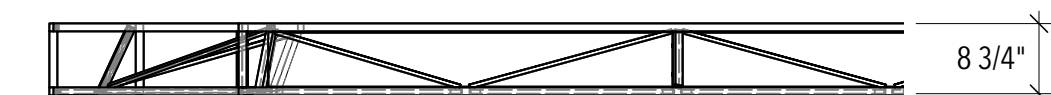
NOTE:

- each sunburst rail is not right angled box truss but 114.7 degree angled
- chord, ladder bar, and lacing are all square steel tubes
- chord and ladder bar for the sunburst rail 1 are 1 1/2" steel tube, the lacing is 1/2" steel tube
- chord and ladder bar for the sunburst rail 2 and 3 are 1", the lacing is 1/2"

F-6 sunburst rail 1: plan



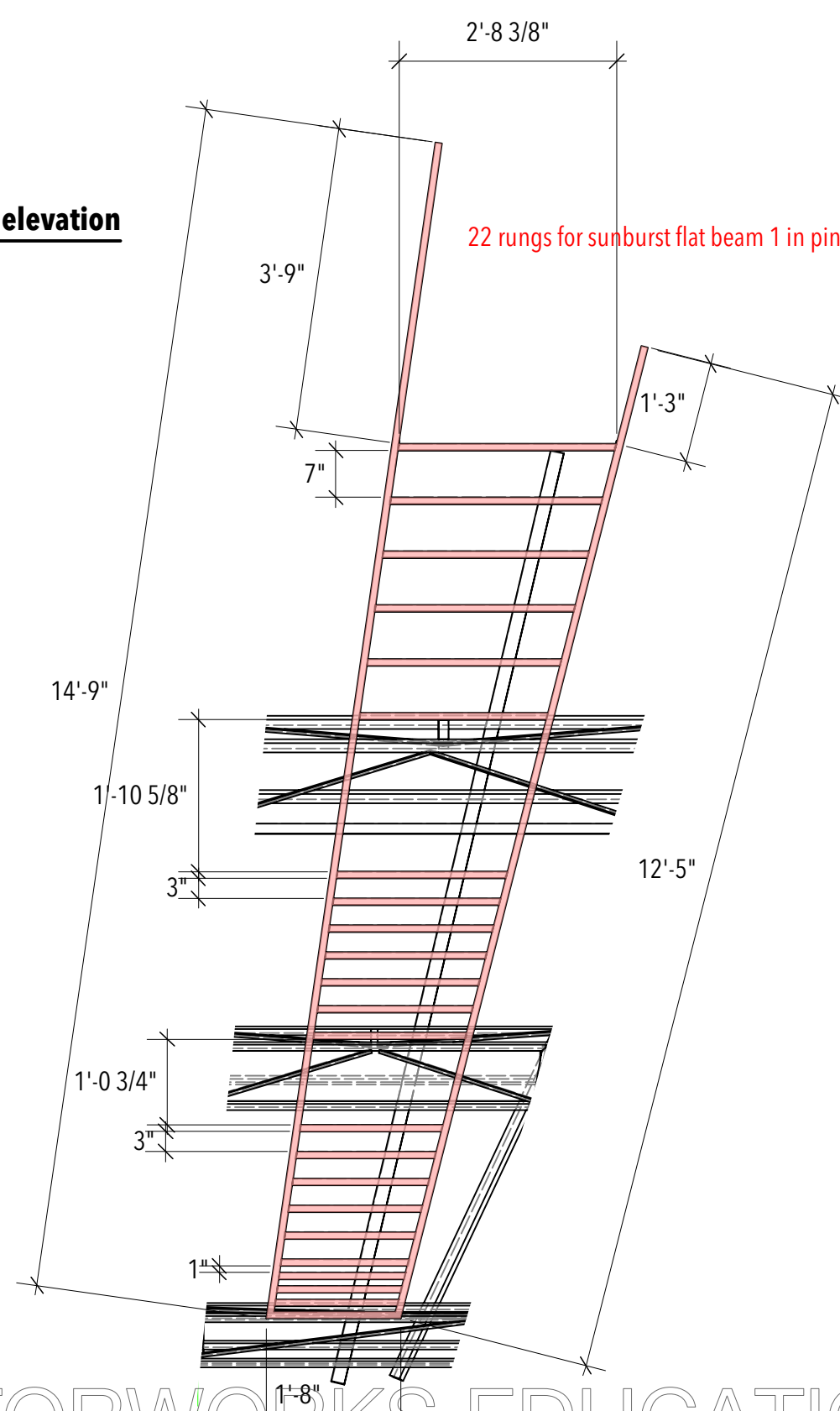
F-8 sunburst rail 2: plan



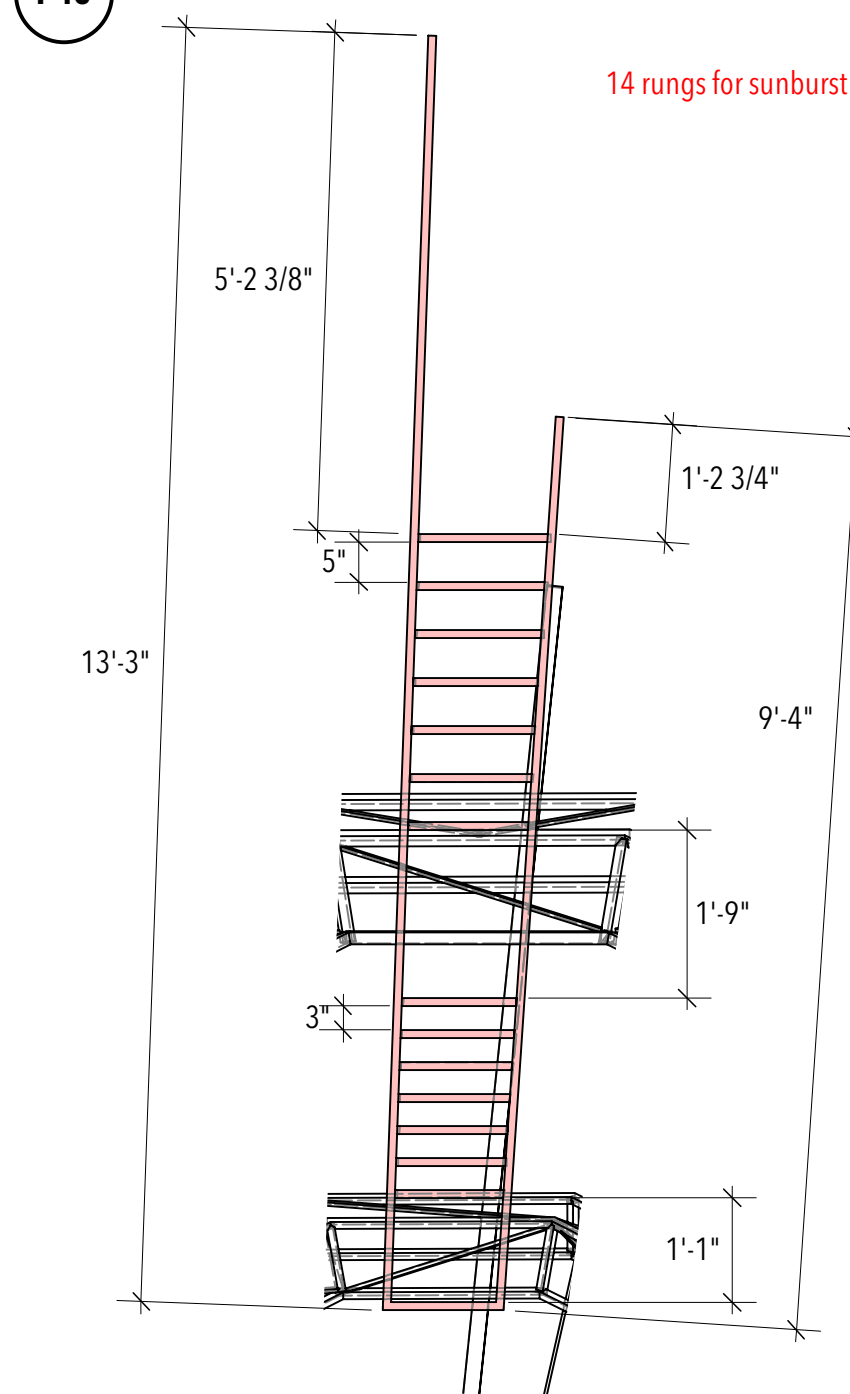
F-10 sunburst rail 3: plan



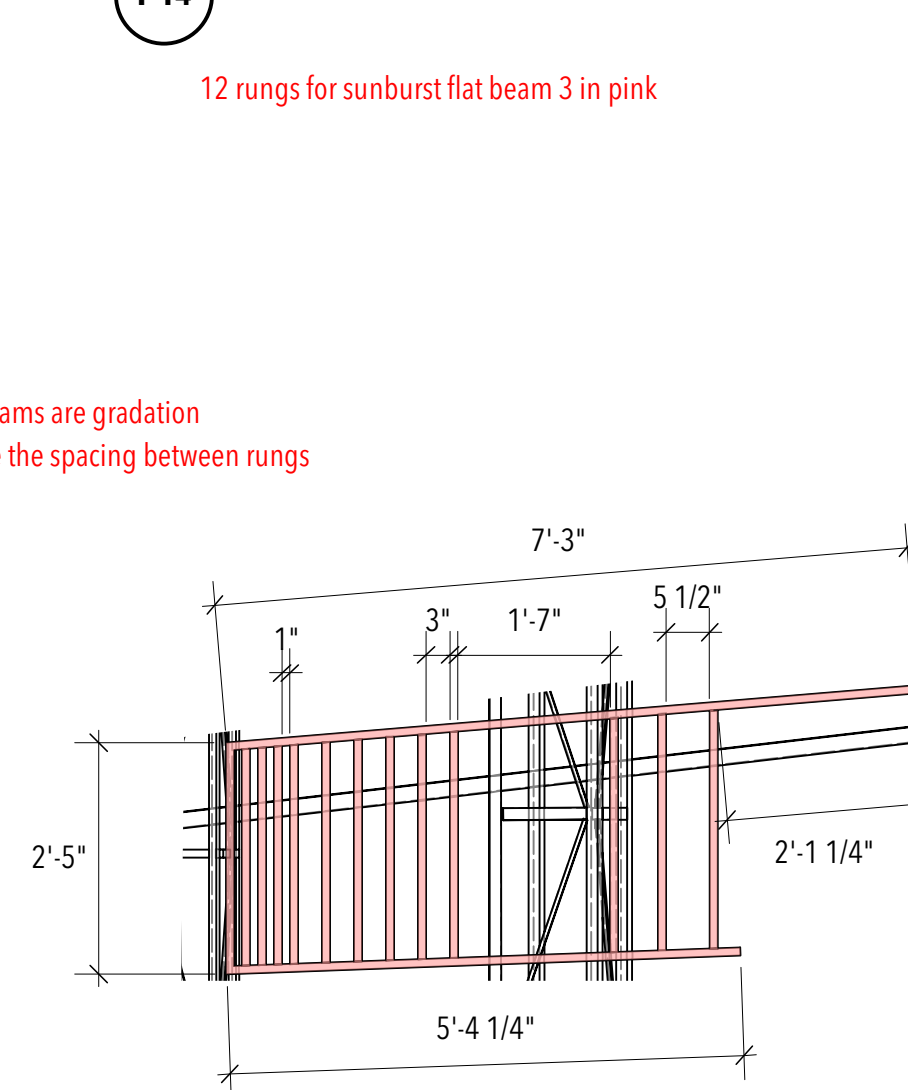
F-12 sunburst flat beam 1: elevation



F-13 sunburst flat beam 2: elevation



F-14 sunburst flat beam 3: elevation



NOTE:

- the flat beams are gradation
- make sure the spacing between rungs

The Elaborate Entrance of Chad Deity

Directing: Jerry Ruiz
 Costume Design: Harry Nadal
 Lighting Design: Bill Rios
 Projection Design: John Erickson
 Sound Design: Philip Owen
 Technical Directing: Austin Manning
 Scenic Design: Inseung Park
 Drafting: Inseung Park

ZACH Theatre

F-2. sunburst rail 1

Scale: 1/2"=1'-0"

Date: December 3, 2021



S.D. 13829
 SCENIC DESIGNER
 SIGNATURE