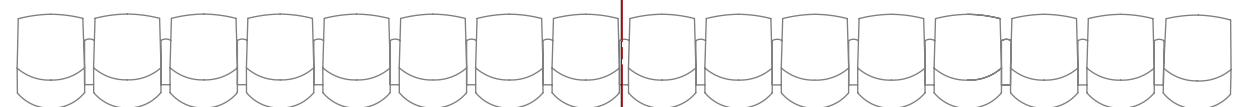


-35" -28"-21"-14"-7"

-7" -14"-21"-28"-35"

proscenium: 16'-10" tall, 24'-10" wide
 the deck is 35" from the audience level.
 the audience aisles are 42" wide.



Magnolia Ballet
 by Terry Guest

Directing: Mikael Burke
 Costume Design: Toni Sirk
 Lighting Design: Laura Glover
 Projection Design: Matthew Mott
 Sound Design: Willow James
 Technical Directing: Zac Hunter
 Scenic Design: Inseung Park
 Drafting: Inseung Park

**Phoenix Theatre
 Indianapolis**

Ground Plan

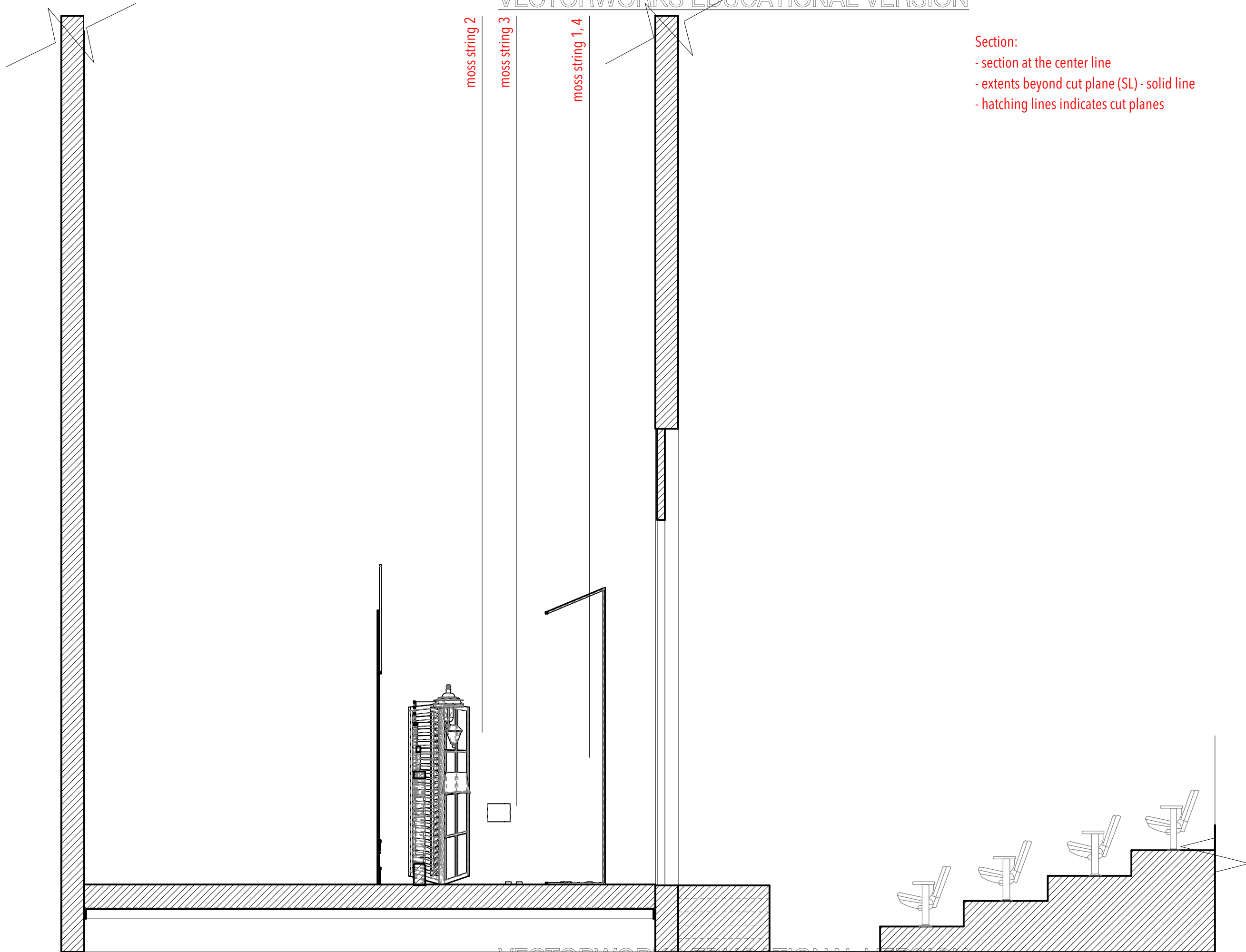
Scale: 1/4"=1'-0"

Date: December 1, 2021



S.D. 13829
 SCENIC DESIGNER

SIGNATURE *Inseung Park*



Magnolia Ballet
by Terry Guest

Directing: Mikael Burke
 Costume Design: Toni Sirk
 Lighting Design: Laura Glover
 Projection Design: Matthew Mott
 Sound Design: Willow James
 Technical Directing: Zac Hunter
 Scenic Design: Inseung Park
 Drafting: Inseung Park

**Phoenix Theatre
Indianapolis**

Section

Scale: 1/4"=1'-0"

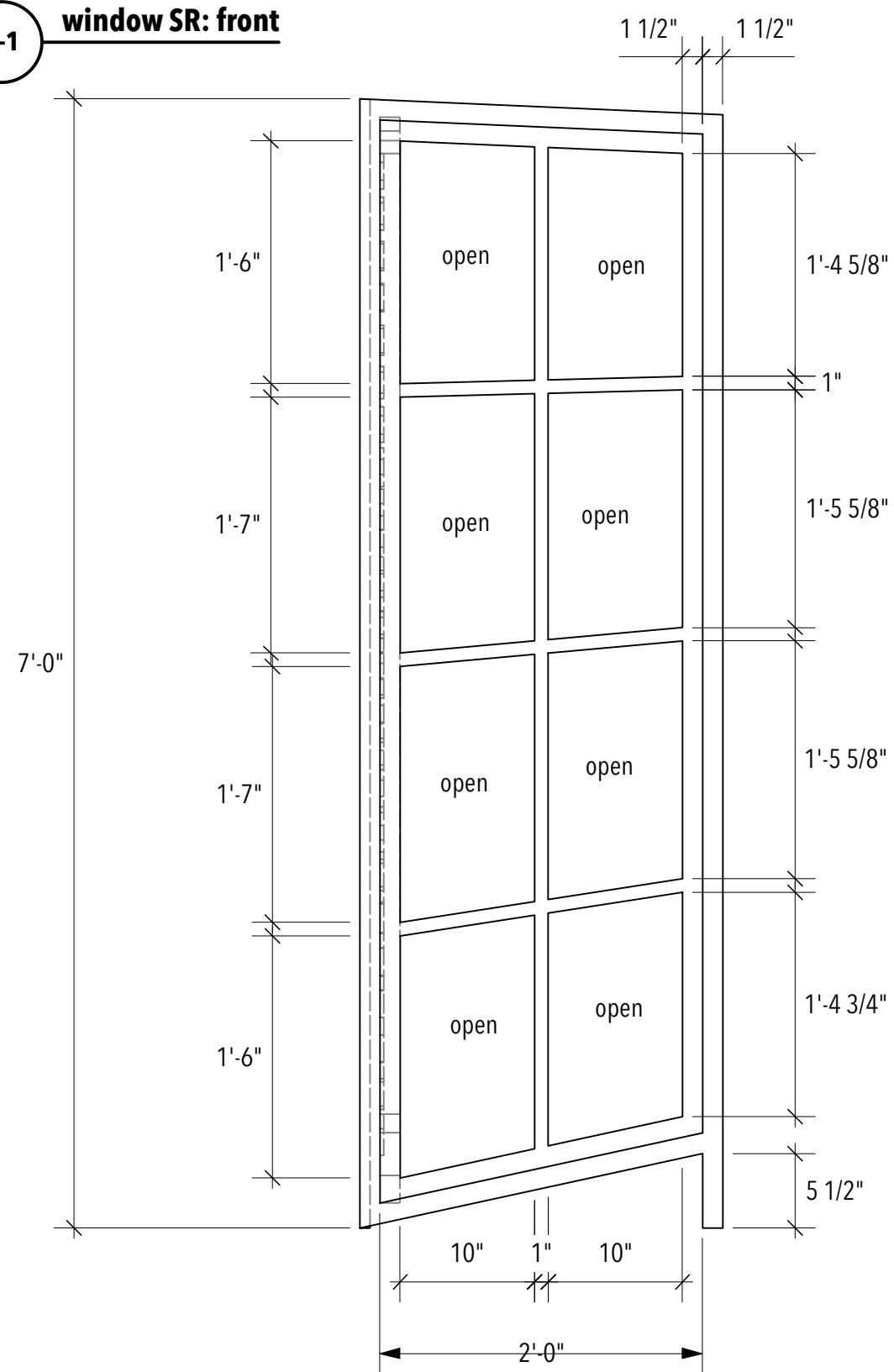
Date: December 1, 2021



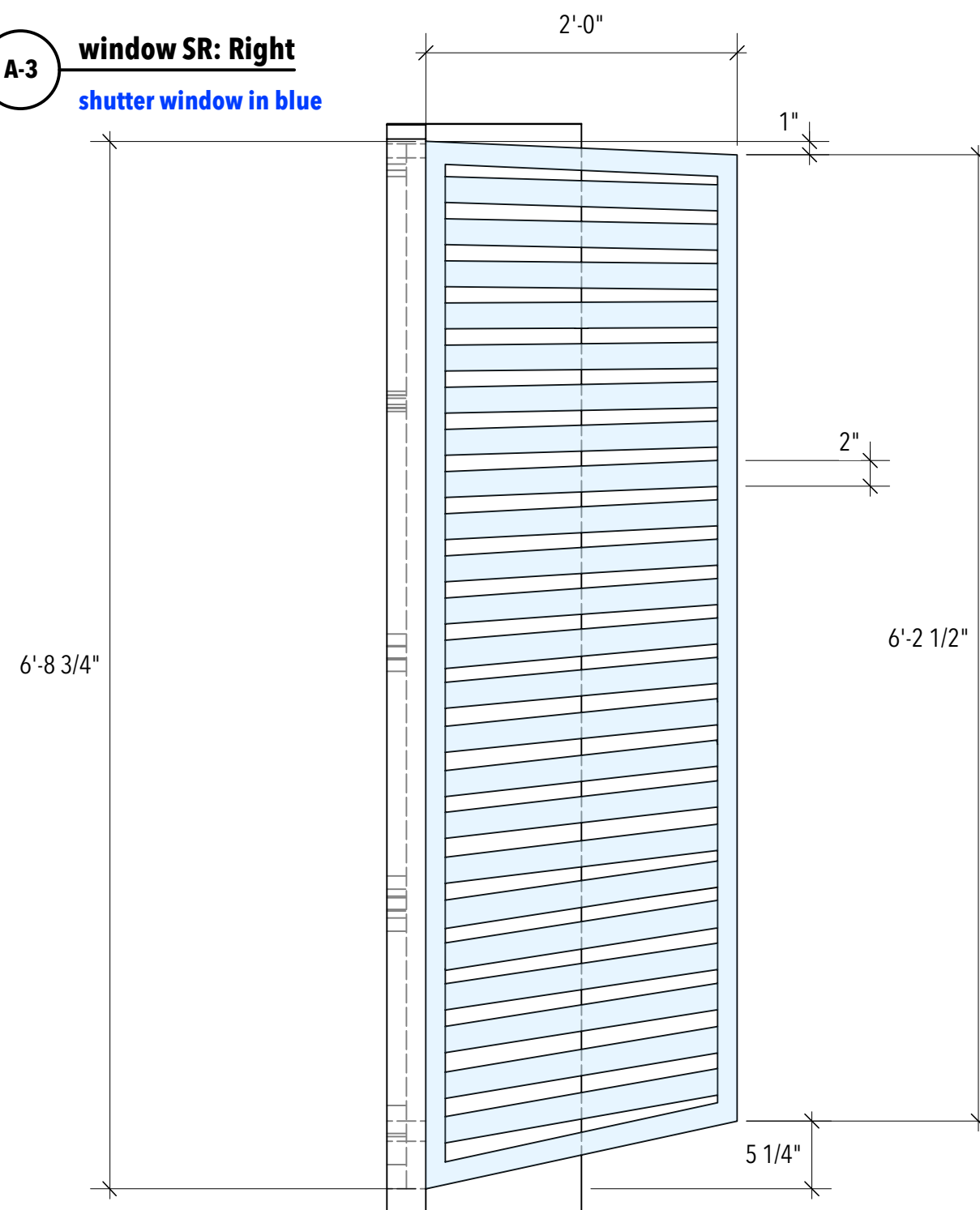
S.D. 13829
SCENIC DESIGNER

SIGNATURE *Inseung Park*

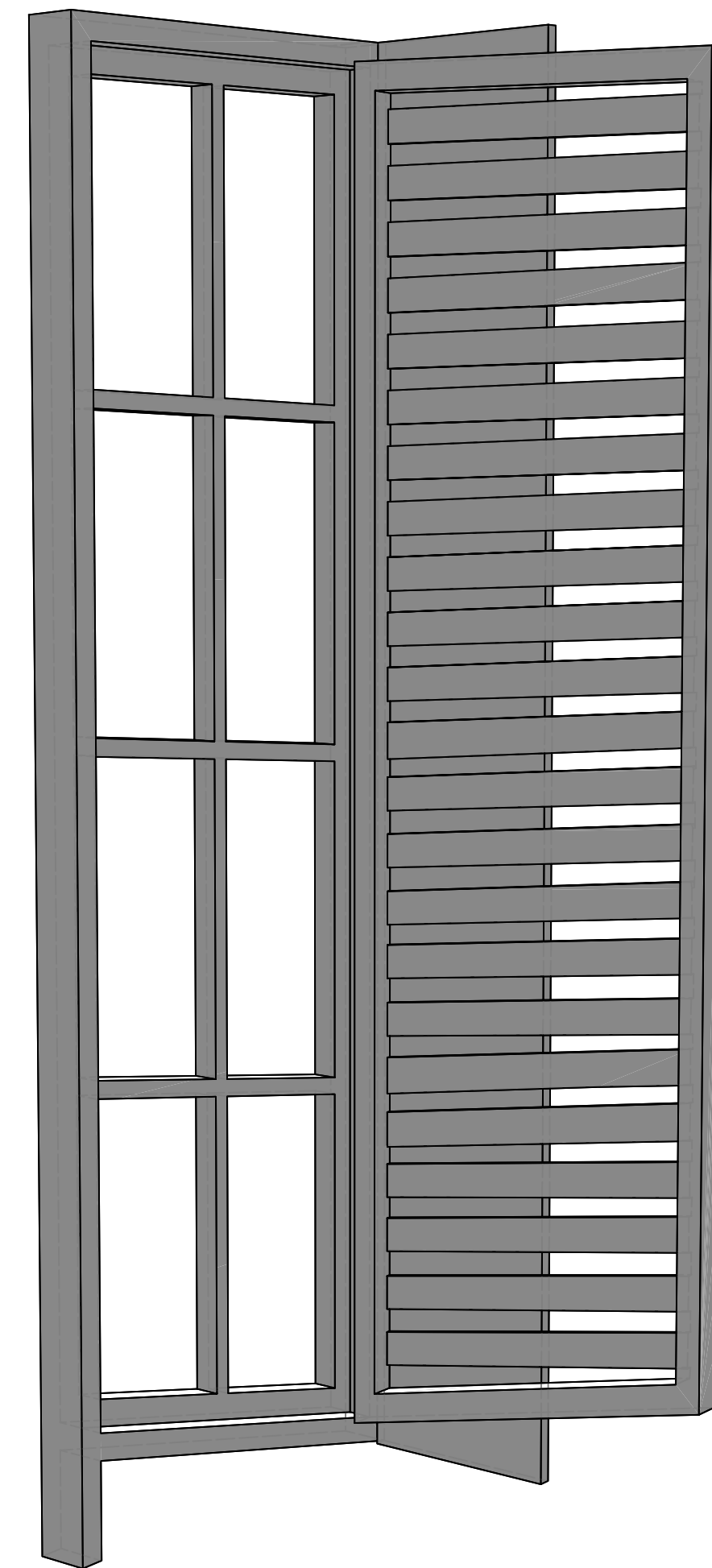
A-1 window SR: front



A-3 window SR: Right shutter window in blue



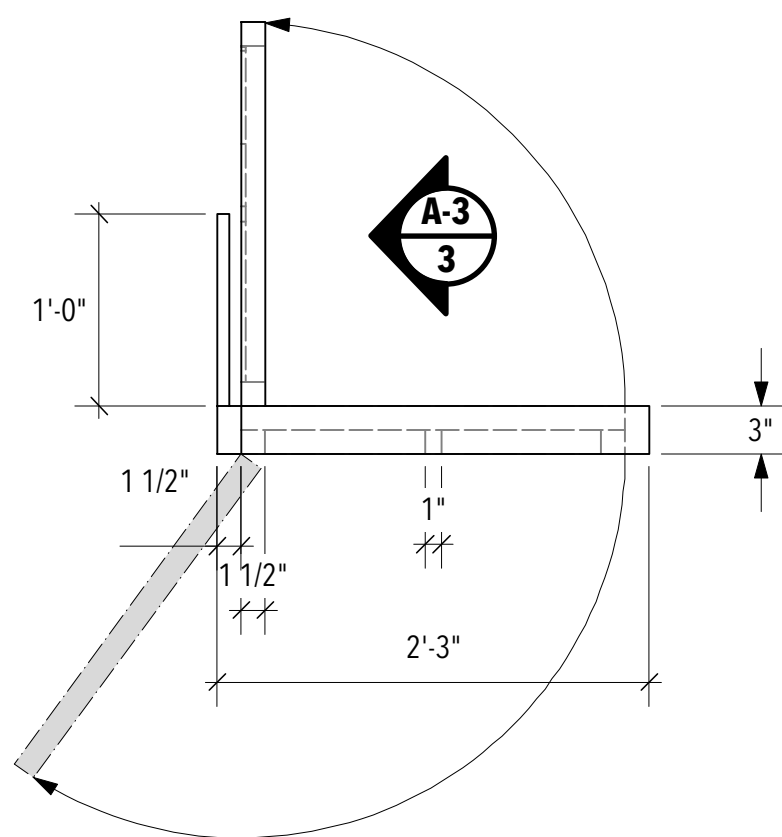
A-4 window SR: perspective



NOTE:

- the window opens downstage
- the shutter opens upstage from the the window frame
- Each louver is about 2" tall and the false perspective is applied
- the space between each louver is about 1"
- total 23 louvers in shutter window

A-2 window SR: plan



Reference



Magnolia Ballet
by Terry Guest

Directing: Mikael Burke
 Costume Design: Toni Sirk
 Lighting Design: Laura Glover
 Projection Design: Matthew Mott
 Sound Design: Willow James
 Technical Directing: Zac Hunter
 Scenic Design: Inseung Park
 Drafting: Inseung Park

Phoenix Theatre
Indianapolis

A. Window SR

Scale: 1"=1'-0"

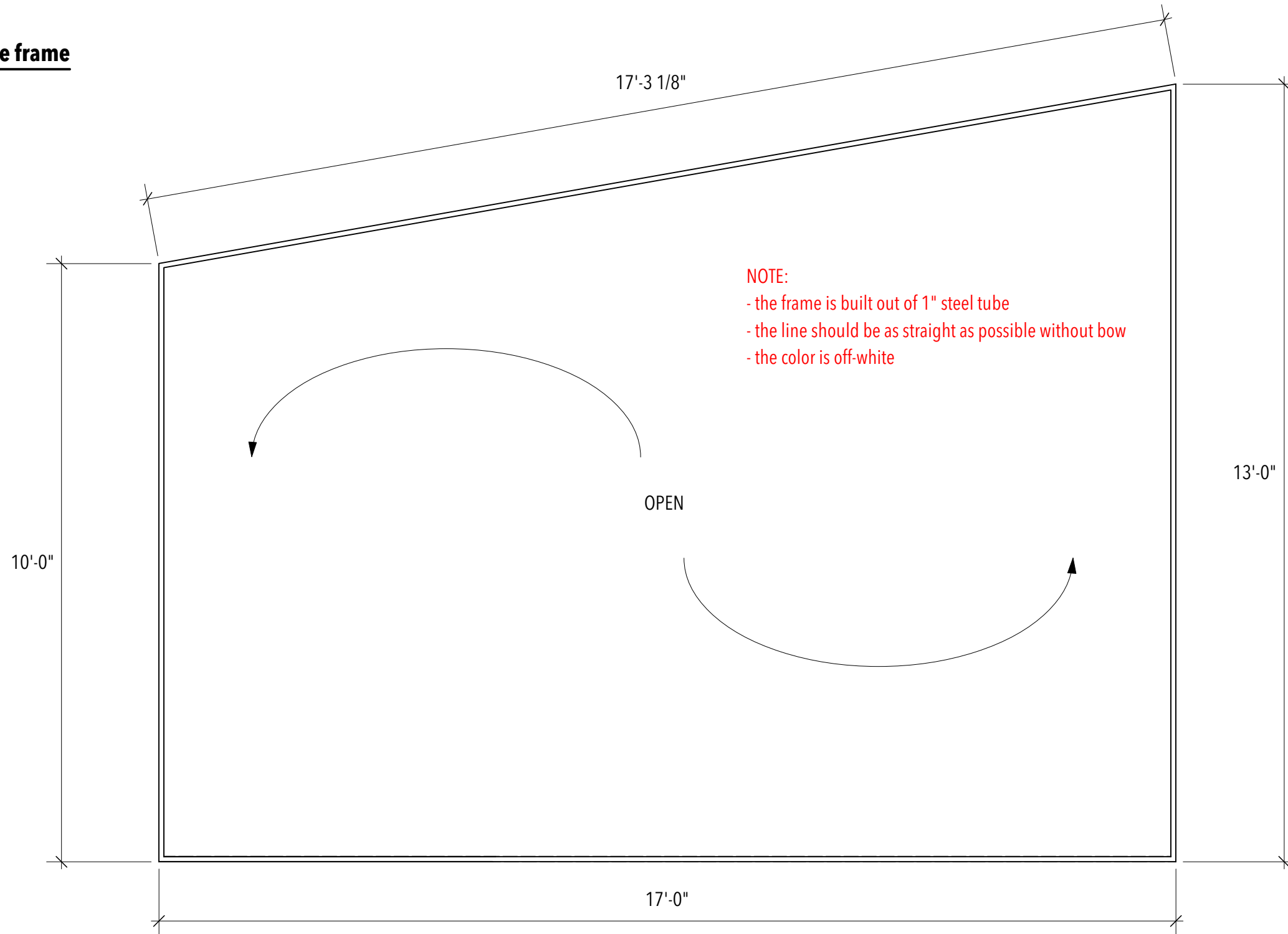
Date: December 1, 2021



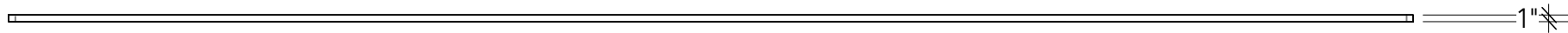
S.D. 13829
SCENIC DESIGNER

SIGNATURE *Inseung Park*

B-1 space frame



B-2 space frame: plan



Magnolia Ballet
by Terry Guest

Directing: Mikael Burke
 Costume Design: Toni Sirk
 Lighting Design: Laura Glover
 Projection Design: Matthew Mott
 Sound Design: Willow James
 Technical Directing: Zac Hunter
 Scenic Design: Inseung Park
 Drafting: Inseung Park

**Phoenix Theatre
Indianapolis**

B. Frame

Scale: 1/2"=1'-0"

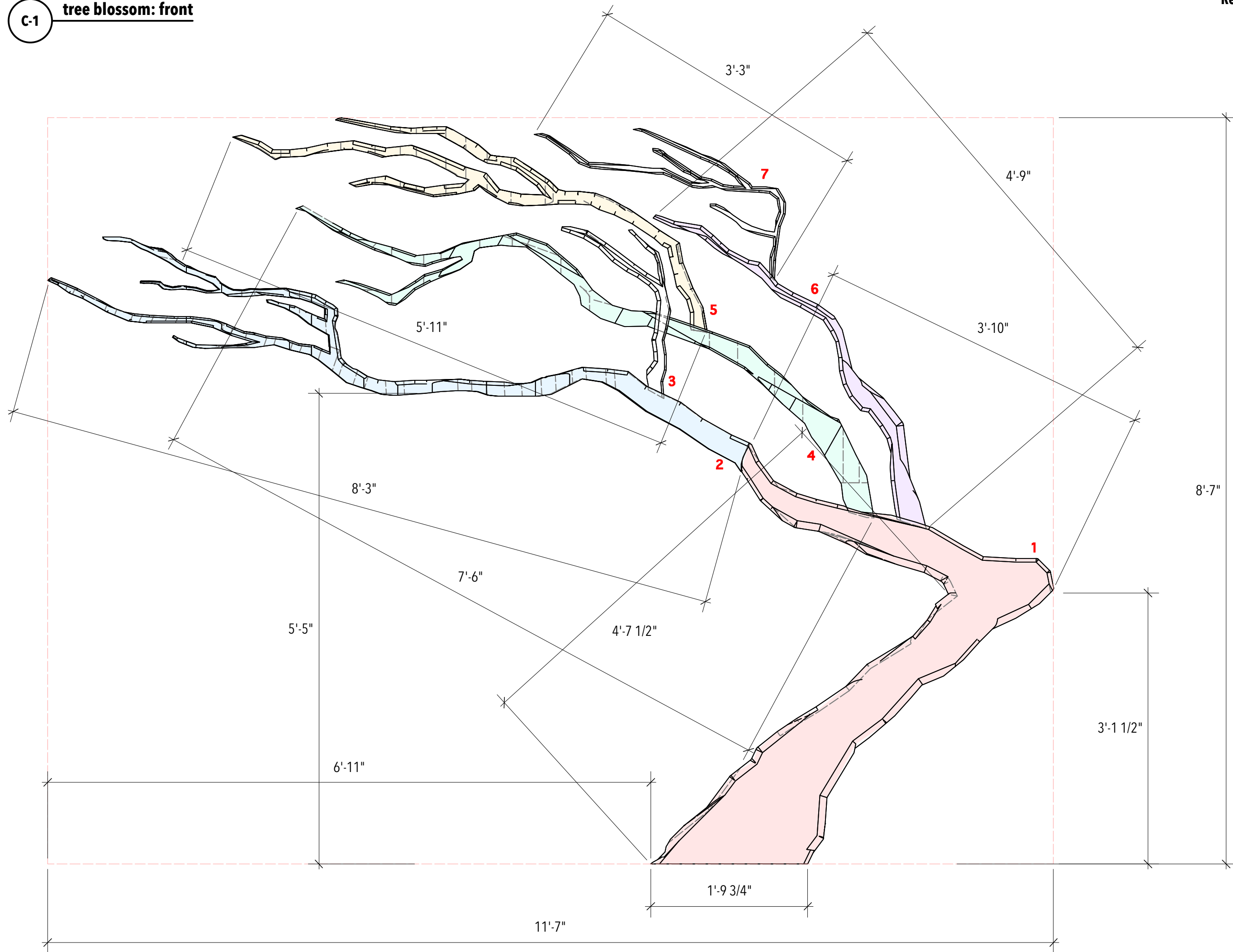
Date: December 1, 2021



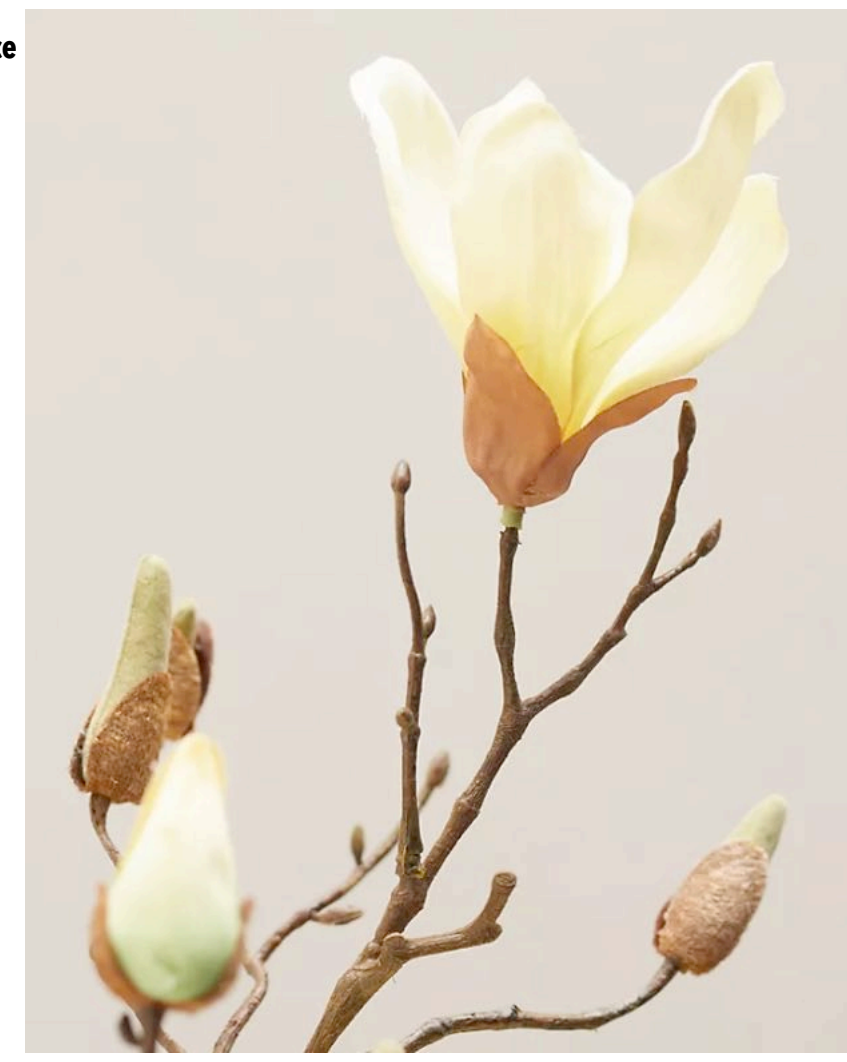
S.D. 13829
SCENIC DESIGNER

SIGNATURE *Inseung Park*

C-1 tree blossom: front



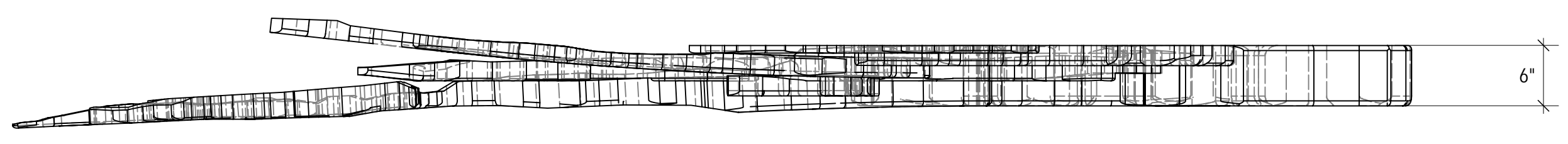
Reference



- NOTE:
- 7 pieces of tree parts: 1 through 7
 - relatively flat unit in a minimal 3 dimensionality
 - adding magnolia blossom as it's shown in the rendering
 - may apply some faux flower branches as seen in the reference

C-2 tree blossom: plan

- NOTE:
- the tree is about 6" to 1' thick
 - the branches are slightly bent toward upstage/downstage to give a 3 dimensionality



Magnolia Ballet
by Terry Guest

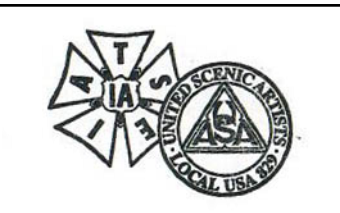
Directing: Mikael Burke
 Costume Design: Toni Sirk
 Lighting Design: Laura Glover
 Projection Design: Matthew Mott
 Sound Design: Willow James
 Technical Directing: Zac Hunter
 Scenic Design: Inseung Park
 Drafting: Inseung Park

Phoenix Theatre Indianapolis

Tree blossom

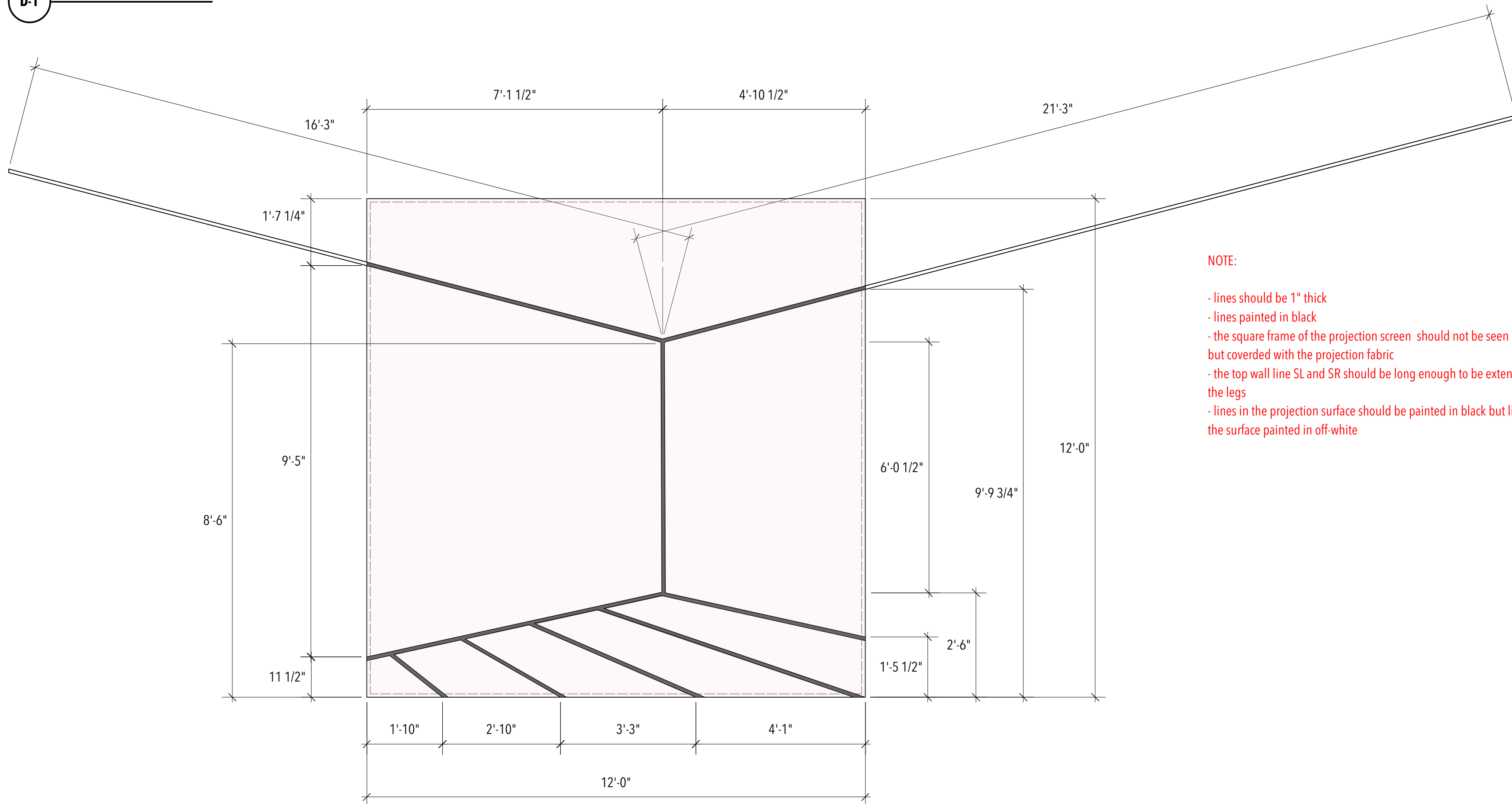
Scale: 1" = 1'-0"

Date: December 1, 2021



S.D. 13829
 SCENIC DESIGNER
 SIGNATURE *Inseung Park*

D-1 projection screen: front



NOTE:

- lines should be 1" thick
- lines painted in black
- the square frame of the projection screen should not be seen but covered with the projection fabric
- the top wall line SL and SR should be long enough to be extended behind the legs
- lines in the projection surface should be painted in black but line off the surface painted in off-white

D-2 projection screen: plan



Magnolia Ballet
by Terry Guest

Directing: Mikael Burke
 Costume Design: Toni Sirk
 Lighting Design: Laura Glover
 Projection Design: Matthew Mott
 Sound Design: Willow James
 Technical Directing: Zac Hunter
 Scenic Design: Inseung Park
 Drafting: Inseung Park

Phoenix Theatre
Indianapolis

D. Projection Screen

Scale: 1/2"=1'-0"

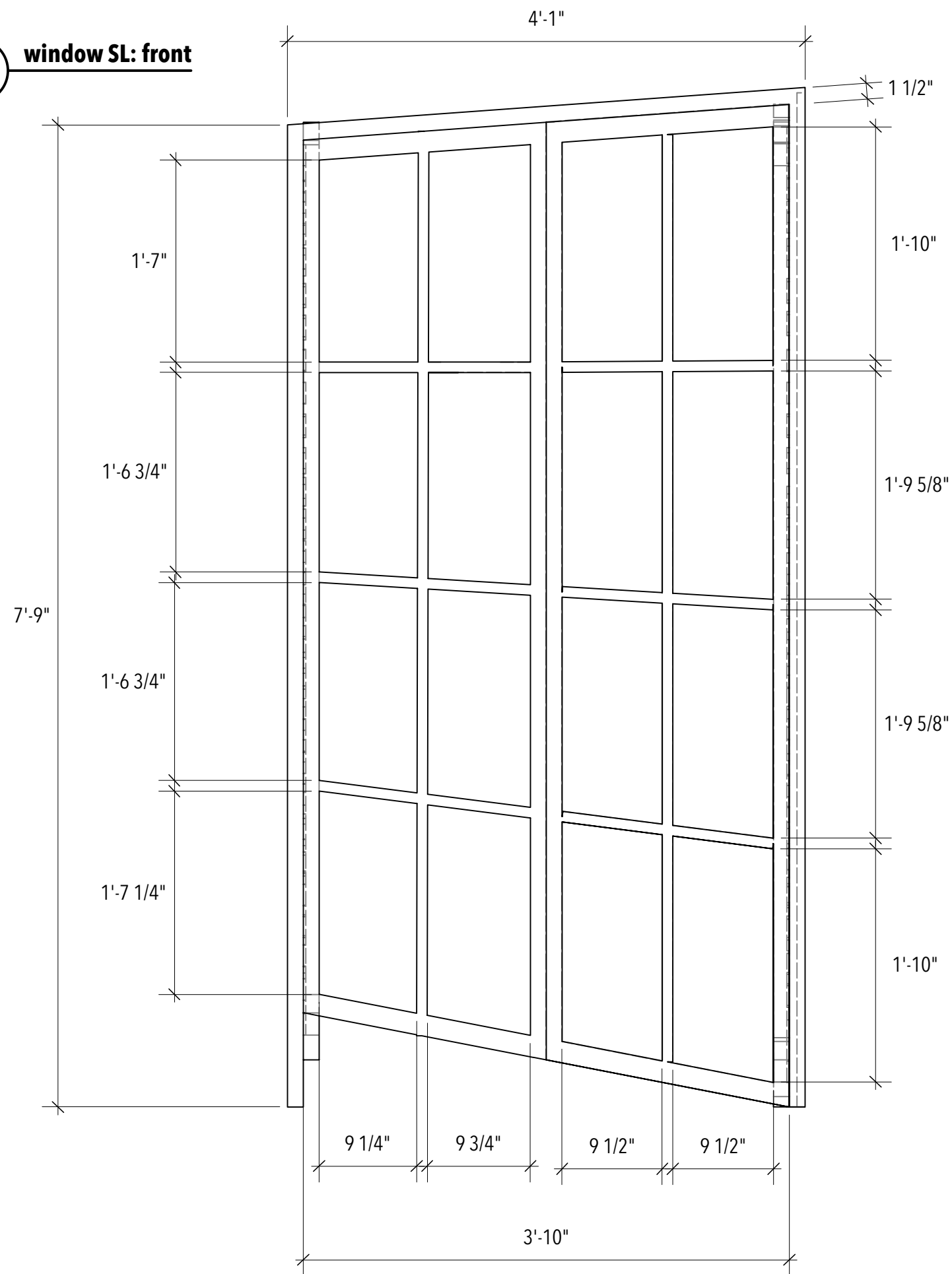
Date: December 1, 2021



S.D. 13829
SCENIC DESIGNER

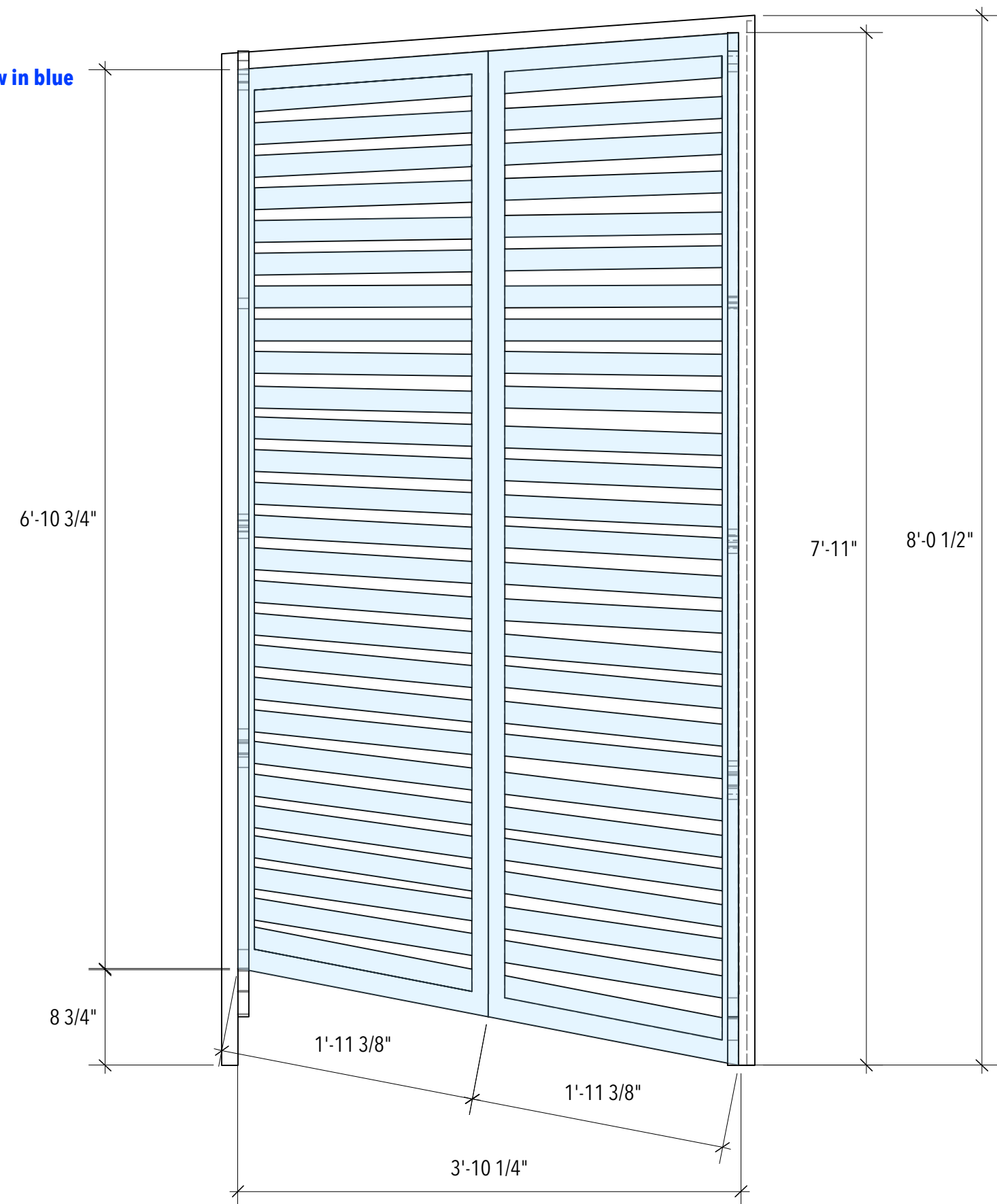
SIGNATURE *Inseung Park*

E-1 window SL: front



E-3 window SL: when louver shutter shut-front

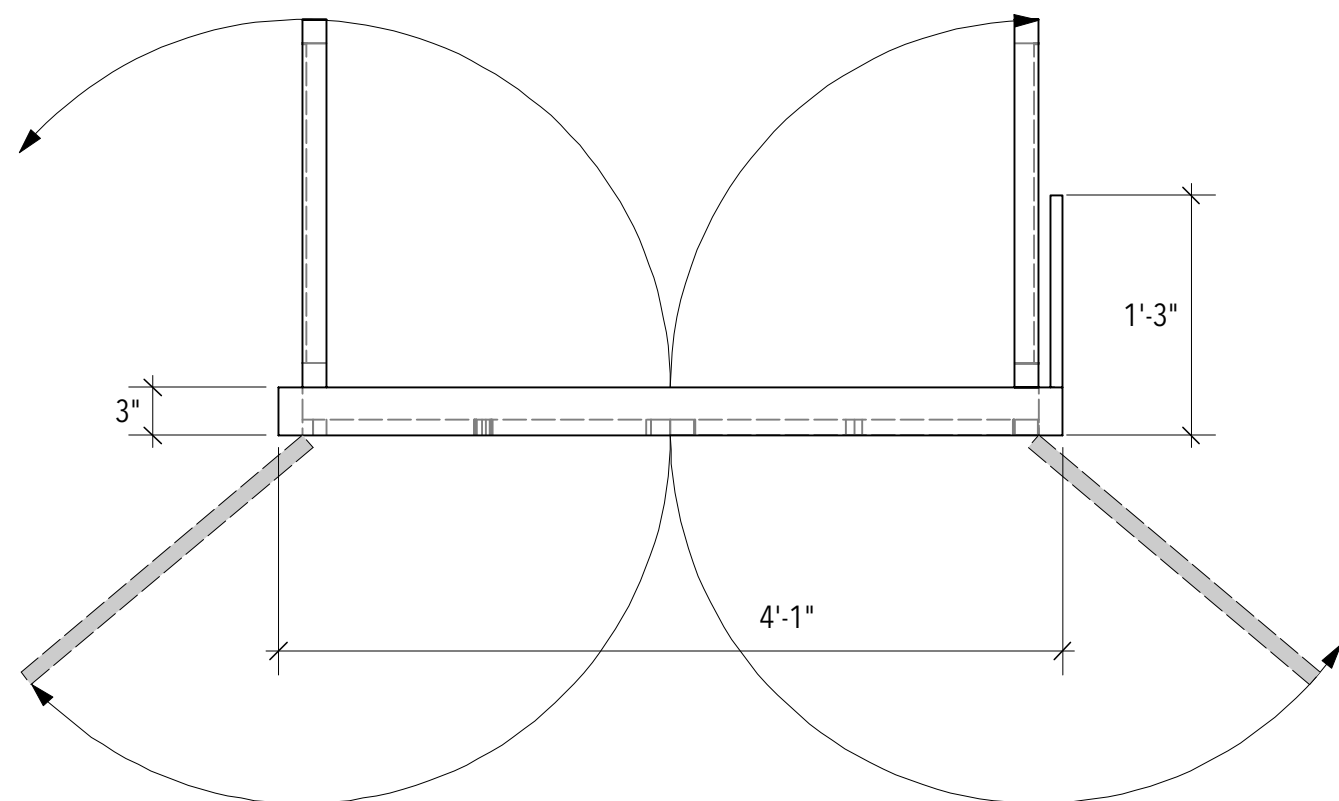
shutter window in blue



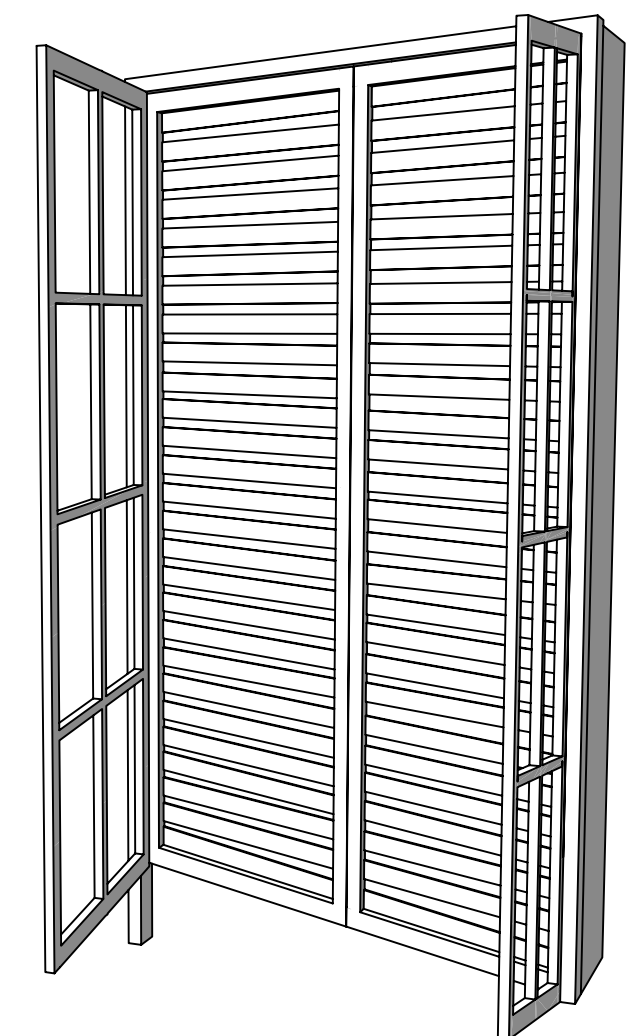
NOTE:

- the window opens downstage
- the shutter opens upstage from the the window frame
- Each louver is about 2" tall and the false perspective is applied
- the space between each louver is about 1"
- total 27 low of louvers

E-2 window SL: plan



E-4 window SL: perspective



Magnolia Ballet
by Terry Guest

Directing: Mikael Burke
Costume Design: Toni Sirk
Lighting Design: Laura Glover
Projection Design: Matthew Mott
Sound Design: Willow James
Technical Directing: Zac Hunter
Scenic Design: Inseung Park
Drafting: Inseung Park

**Phoenix Theatre
Indianapolis**

E. Window SL

Scale: 1"=1'-0"

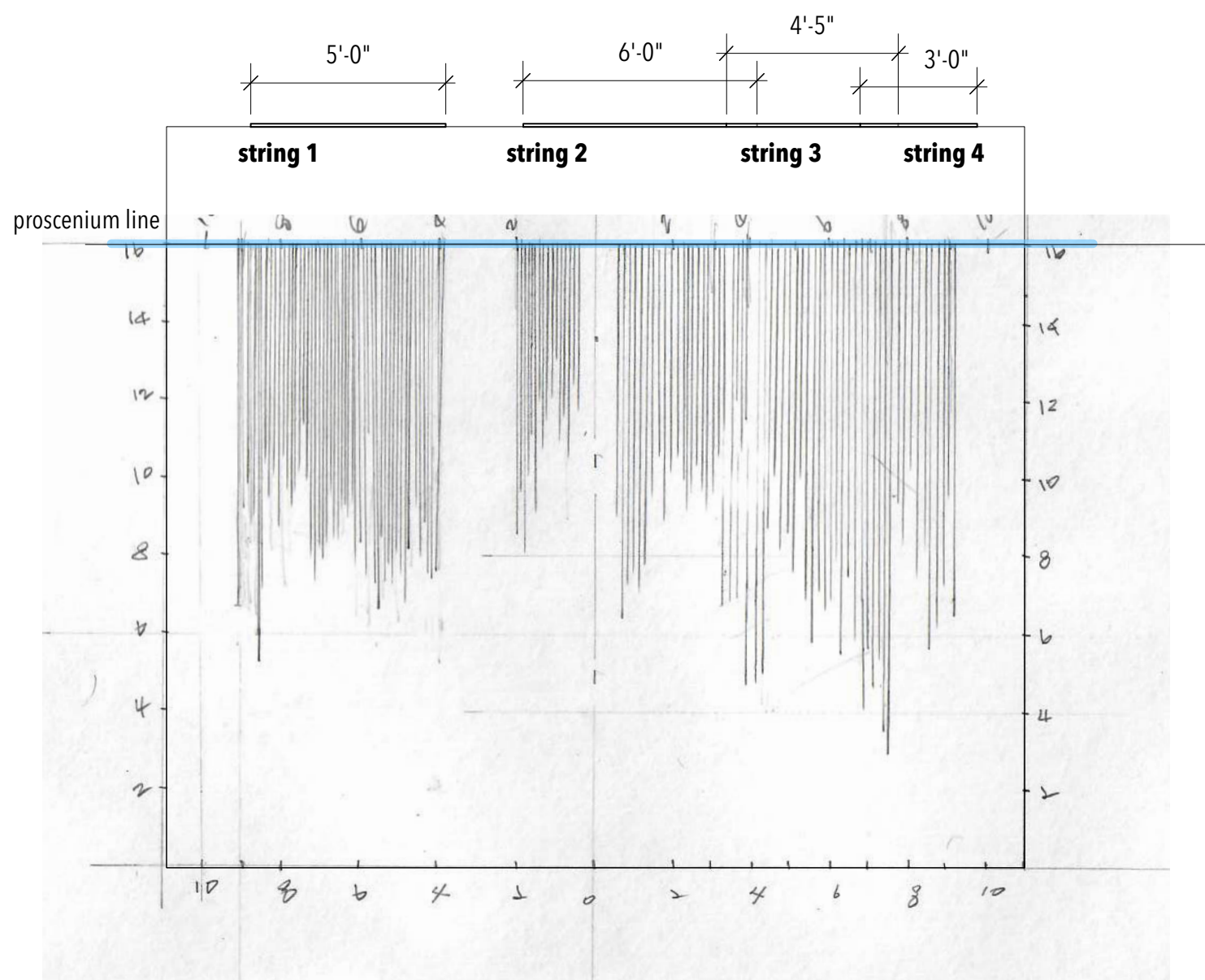
Date: December 1, 2021



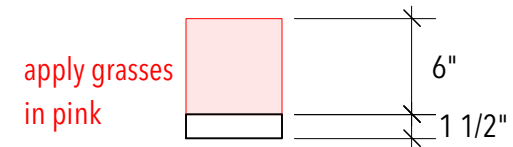
S.D. 13829
SCENIC DESIGNER

SIGNATURE *Inseung Park*

G-1 moss strings: front view from the audience
scale: 1/4"=1'-0"

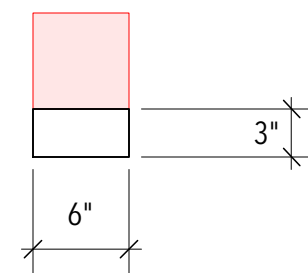


F-1 grass: front Reference



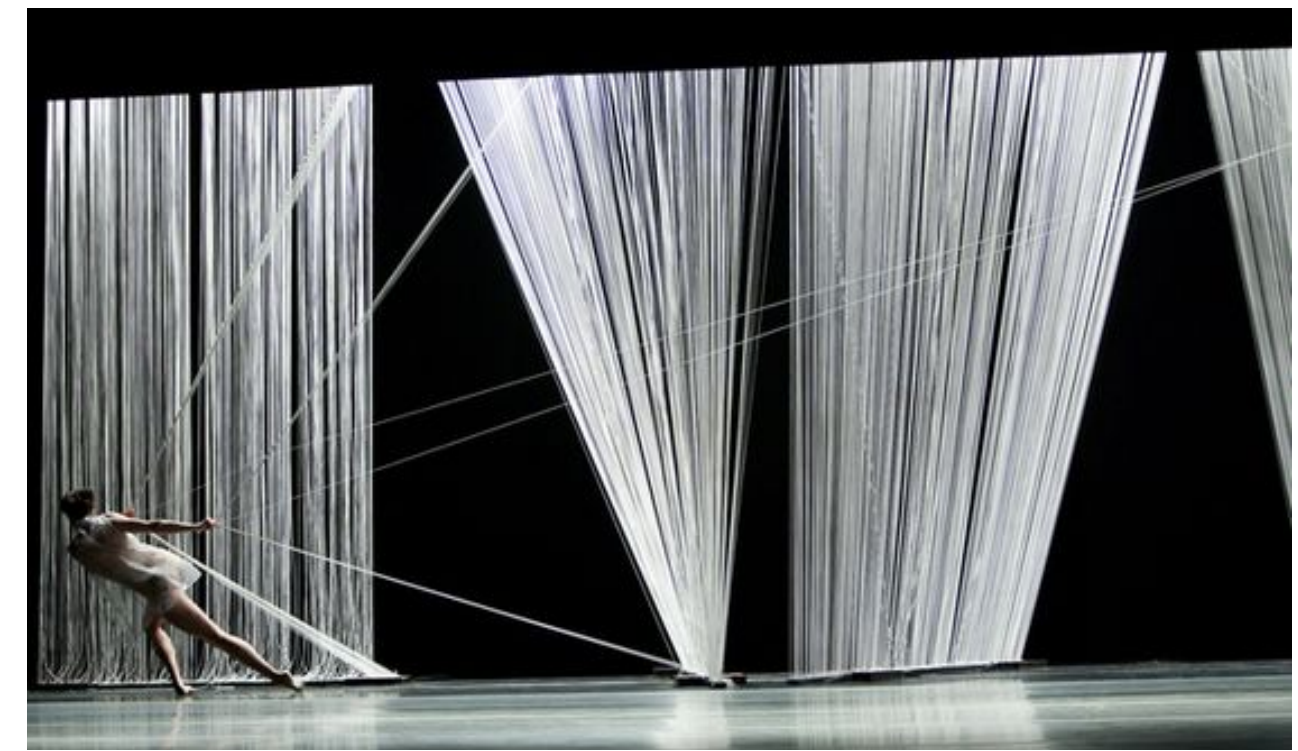
Need total 12 grass blocks

F-2 grass: plan



NOTE:

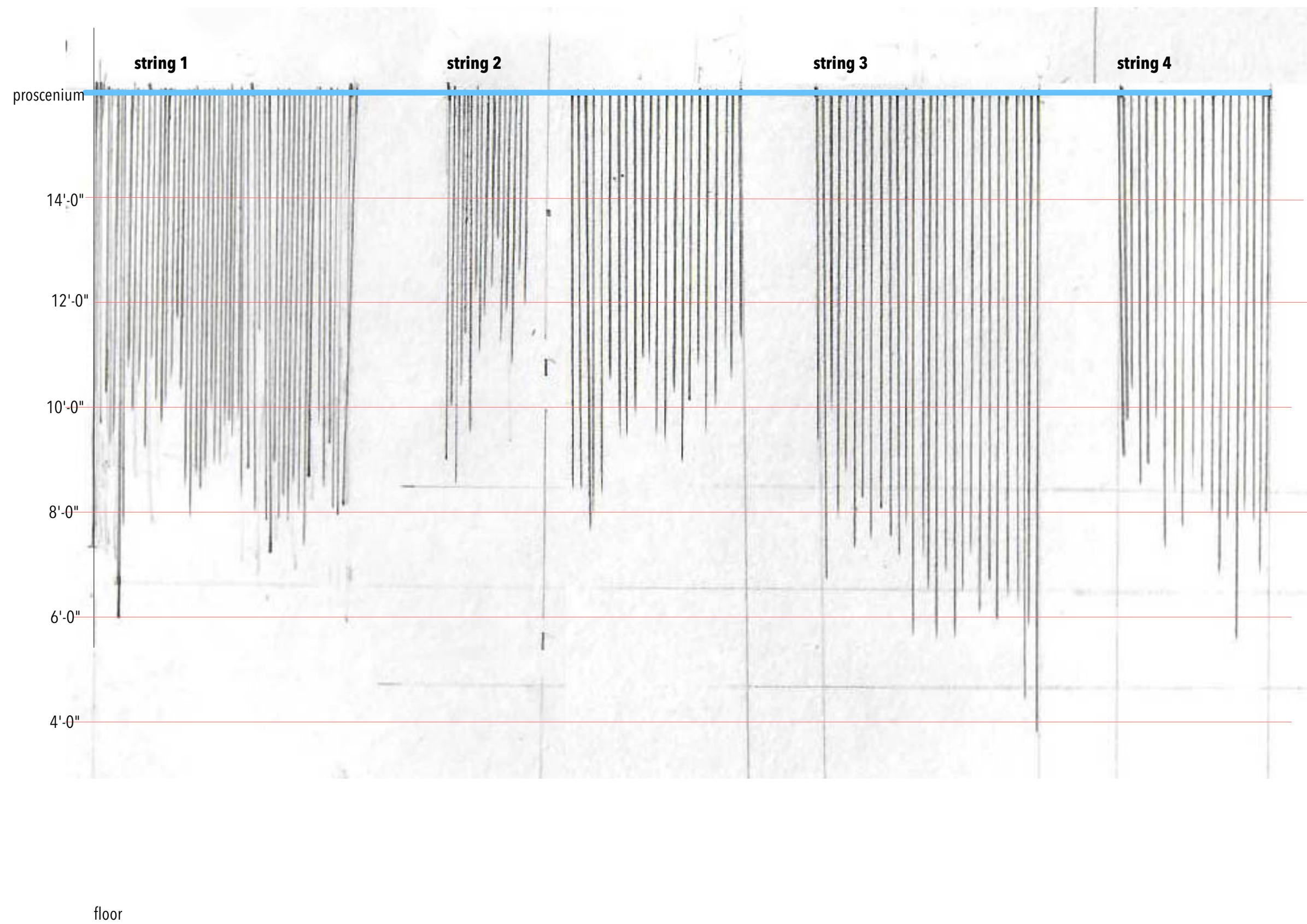
- inconsistency is the key
- the thickness range of strings is about 1/16"
- as straight as possible
- how much off the floor is important - get the sense of movement
- string 2, string 3 are overlapped about 1'
- string 3, string 4 are overlapped about 1'



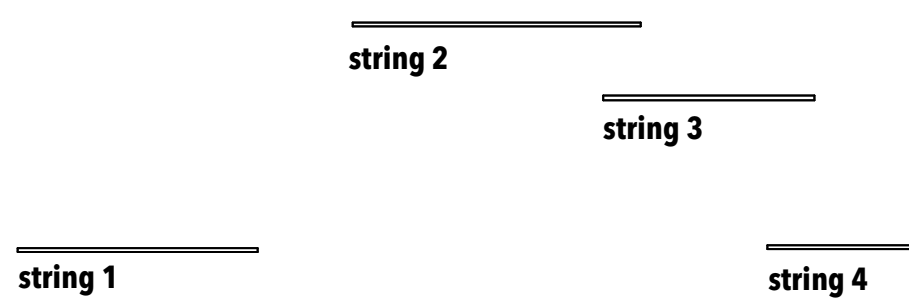
dried fountain grasses



G-3 each moss strings: front



G-2 moss strings: plan
scale: 1/4"=1'-0"



Magnolia Ballet
by Terry Guest

Directing: Mikael Burke
Costume Design: Toni Sirk
Projection Design: Laura Glover
Lighting Design: Matthew Mott
Sound Design: Willow James
Technical Directing: Zac Hunter
Scenic Design: Inseung Park
Drafting: Inseung Park

Phoenix Theatre Indianapolis

**G. Moss strings
F. grass block**

Scale: 1/2"=1'-0"

Date: December 1, 2021



S.D. 13829
SCENIC DESIGNER

SIGNATURE *Inseung Park*