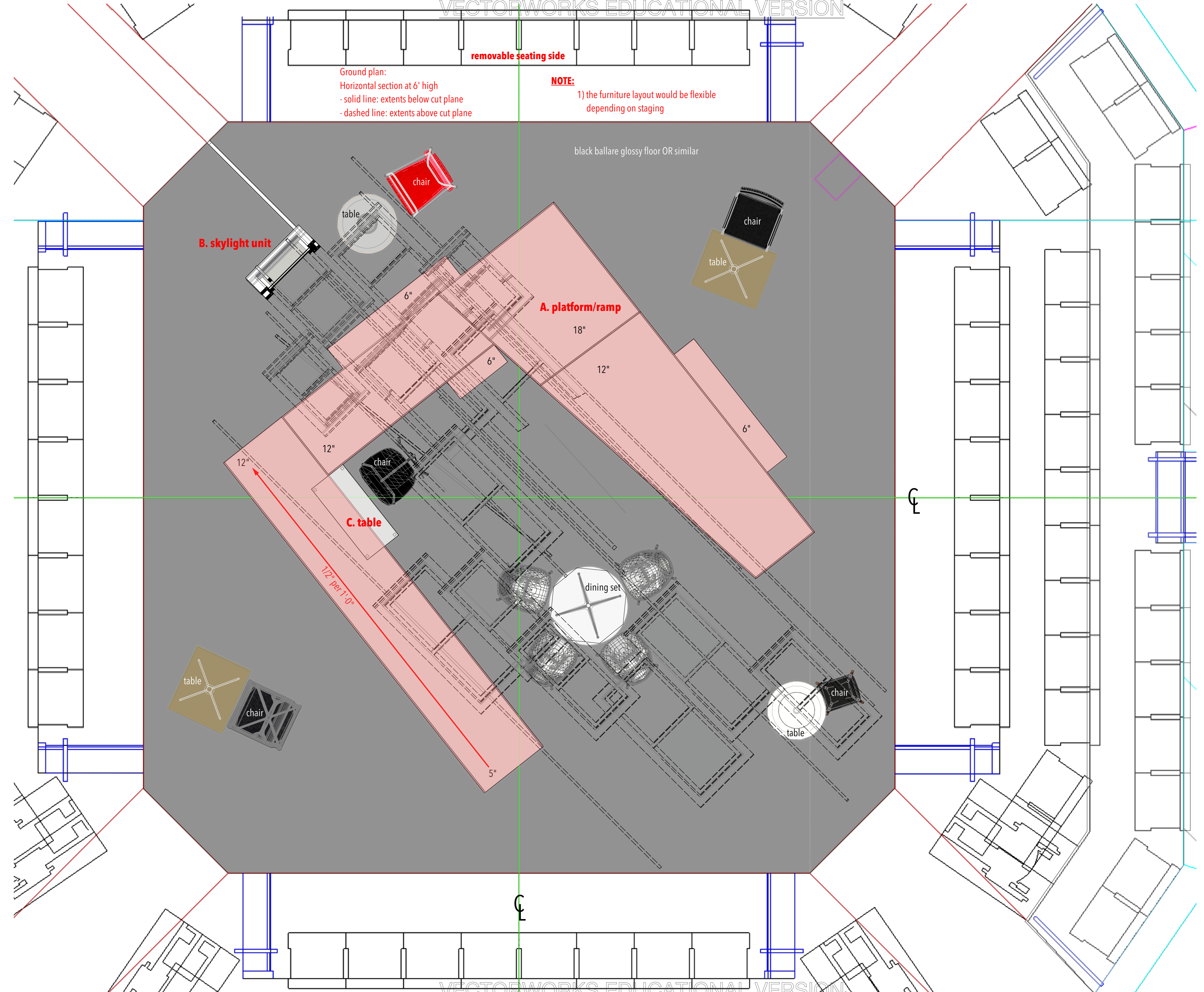


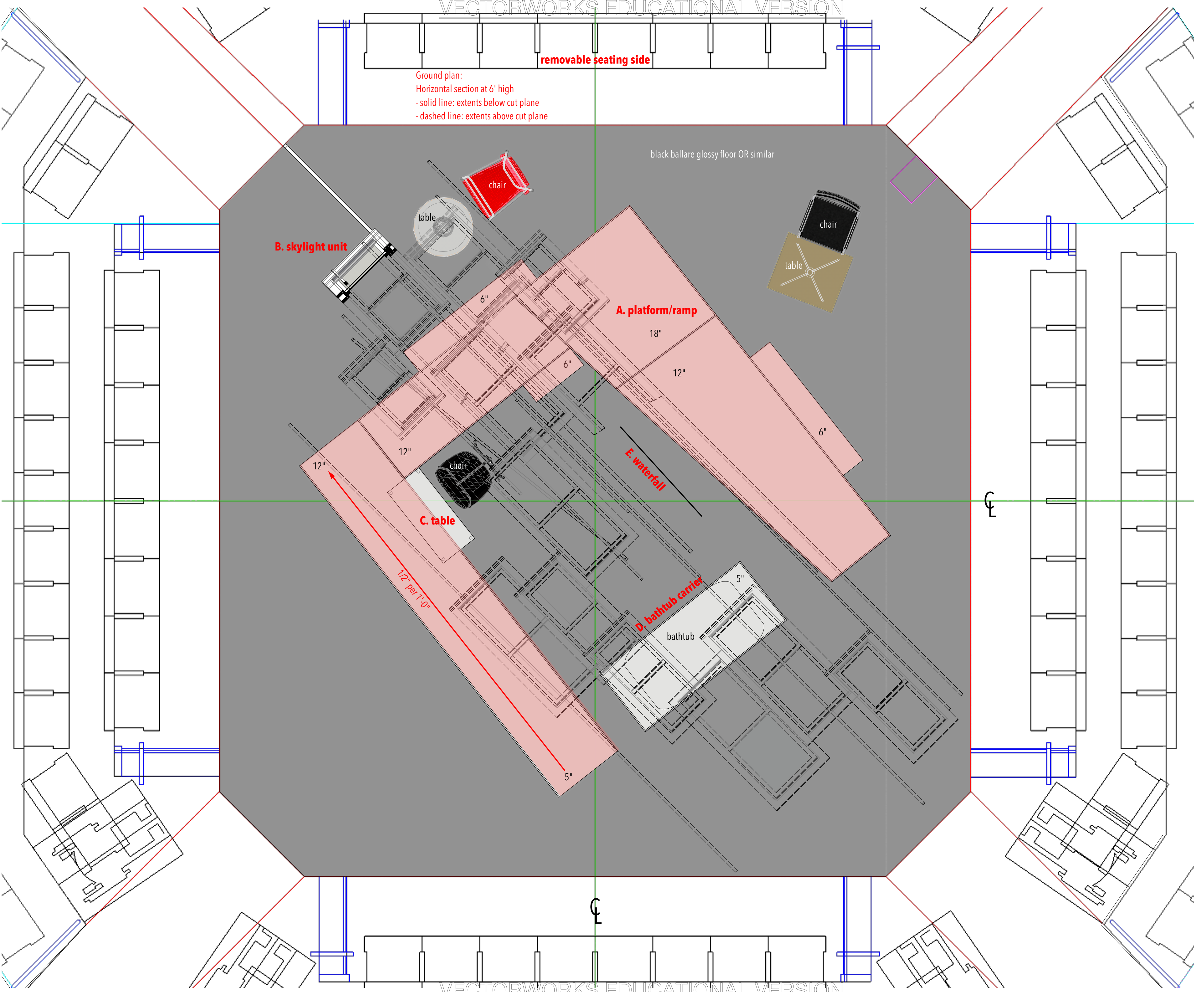
removable seating side

Ground plan:  
Horizontal section at 6' high  
- solid line: extents below cut plane  
- dashed line: extents above cut plane

**NOTE:**  
1) the furniture layout would be flexible depending on staging

black ballare glossy floor OR similar





Ground plan:  
 Horizontal section at 6' high  
 - solid line: extends below cut plane  
 - dashed line: extends above cut plane

removable seating side

black ballare glossy floor OR similar

removable seating side

Ground plan:  
Horizontal section at 6' high  
- solid line: extents below cut plane  
- dashed line: extents above cut plane

ARENA THEATRE  
CIRCULATION

STORAGE

STORAGE

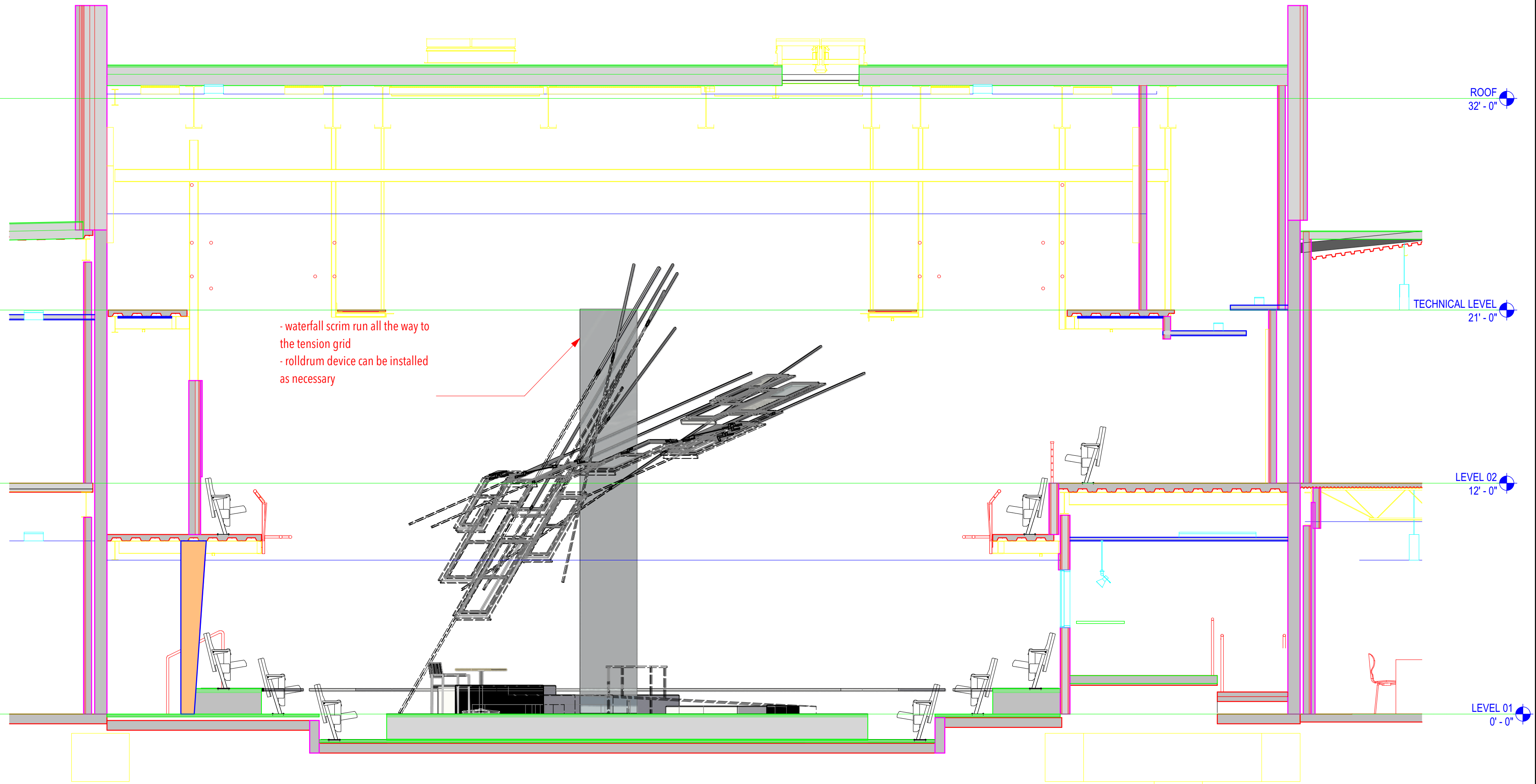
CONTROL

SL

SL

SL

Section:  
 - section at the center line, looking toward South  
 - extents beyond cut plane - solid line  
 - extents before cut plane - dashed line  
 - black fill indicates cut planes



Section south: waterfall scene

Date: November 18, 2019

Water by the Spoonful

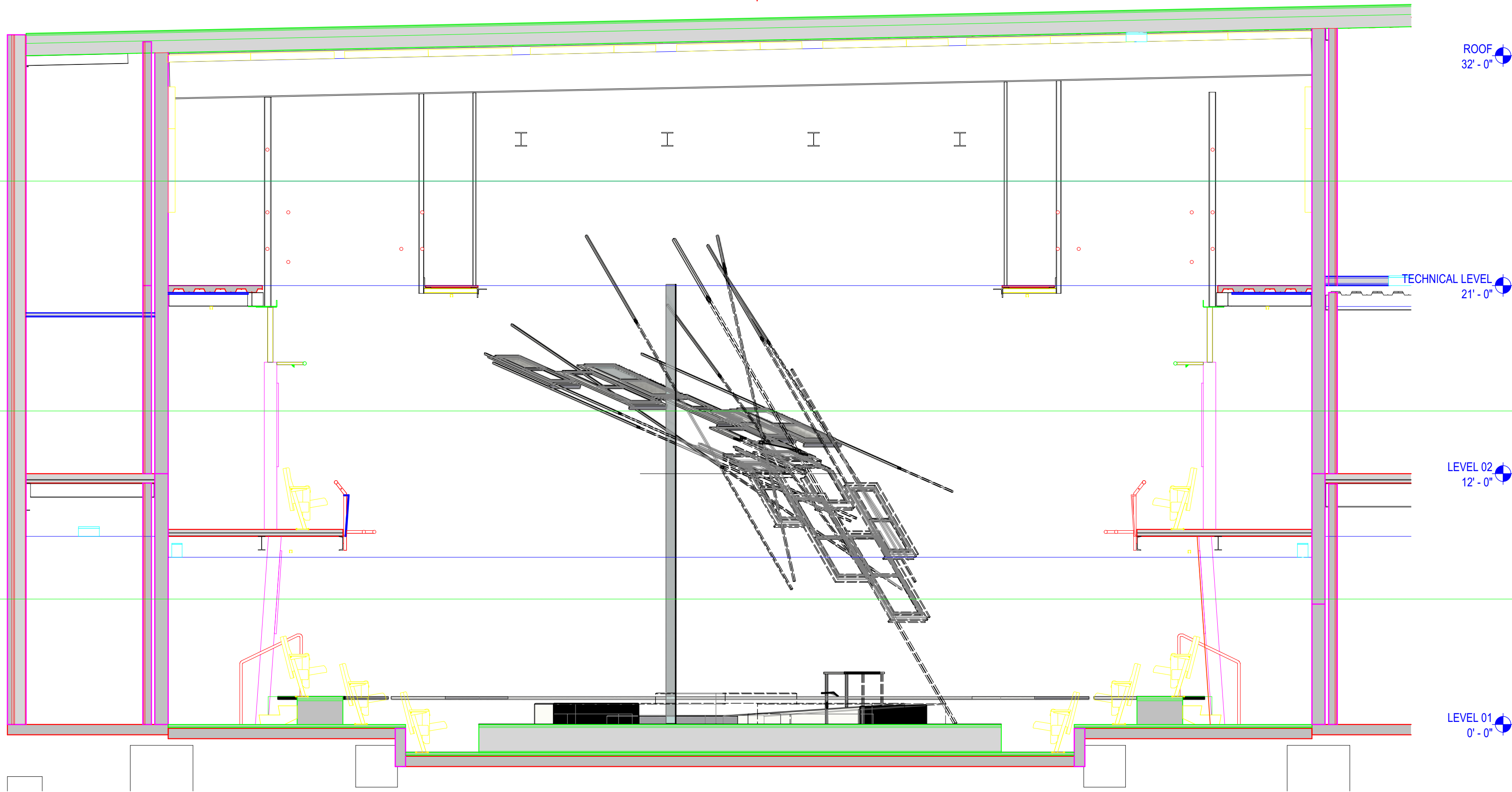
Stages Repertory Theatre

Drafter: Inseung Park

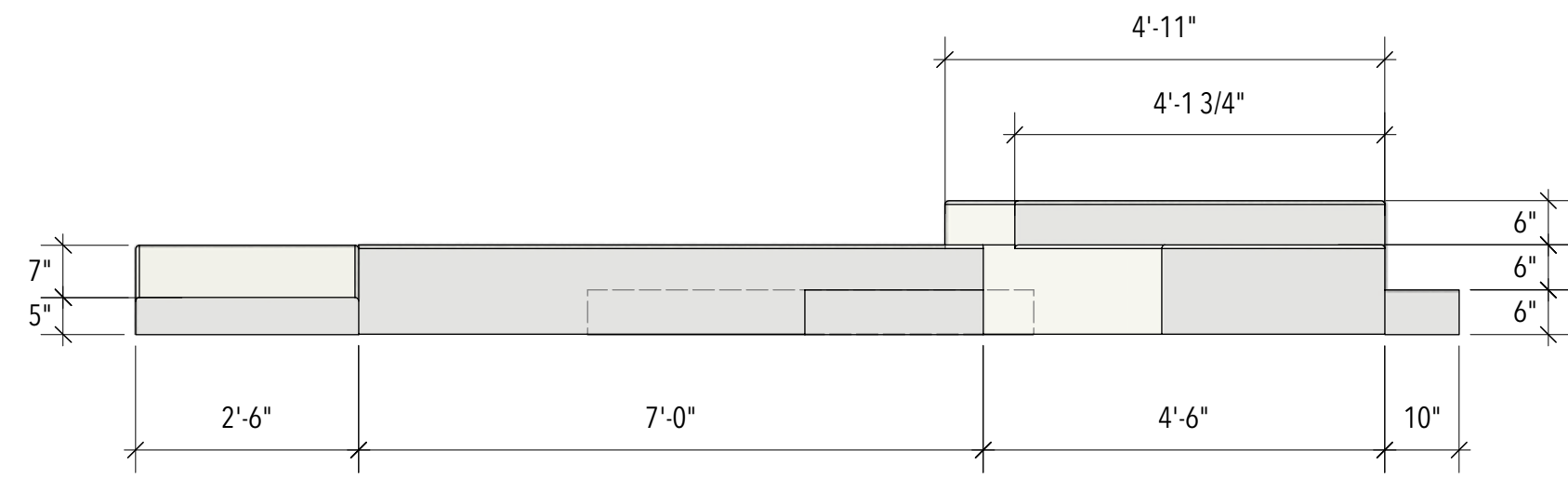
Director: Jerry Ruiz  
 Scenic Designer: Inseung Park  
 Technical director: Joel Burkholder

Scale: 1/4" = 1'-0"

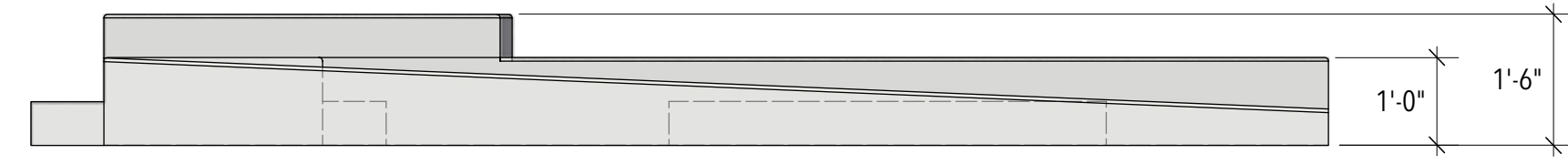
Section:  
- section at the center line, looking toward West  
- extents beyond cut plane - solid line  
- extents before cut plane - dashed line  
- black fill indicates cut planes



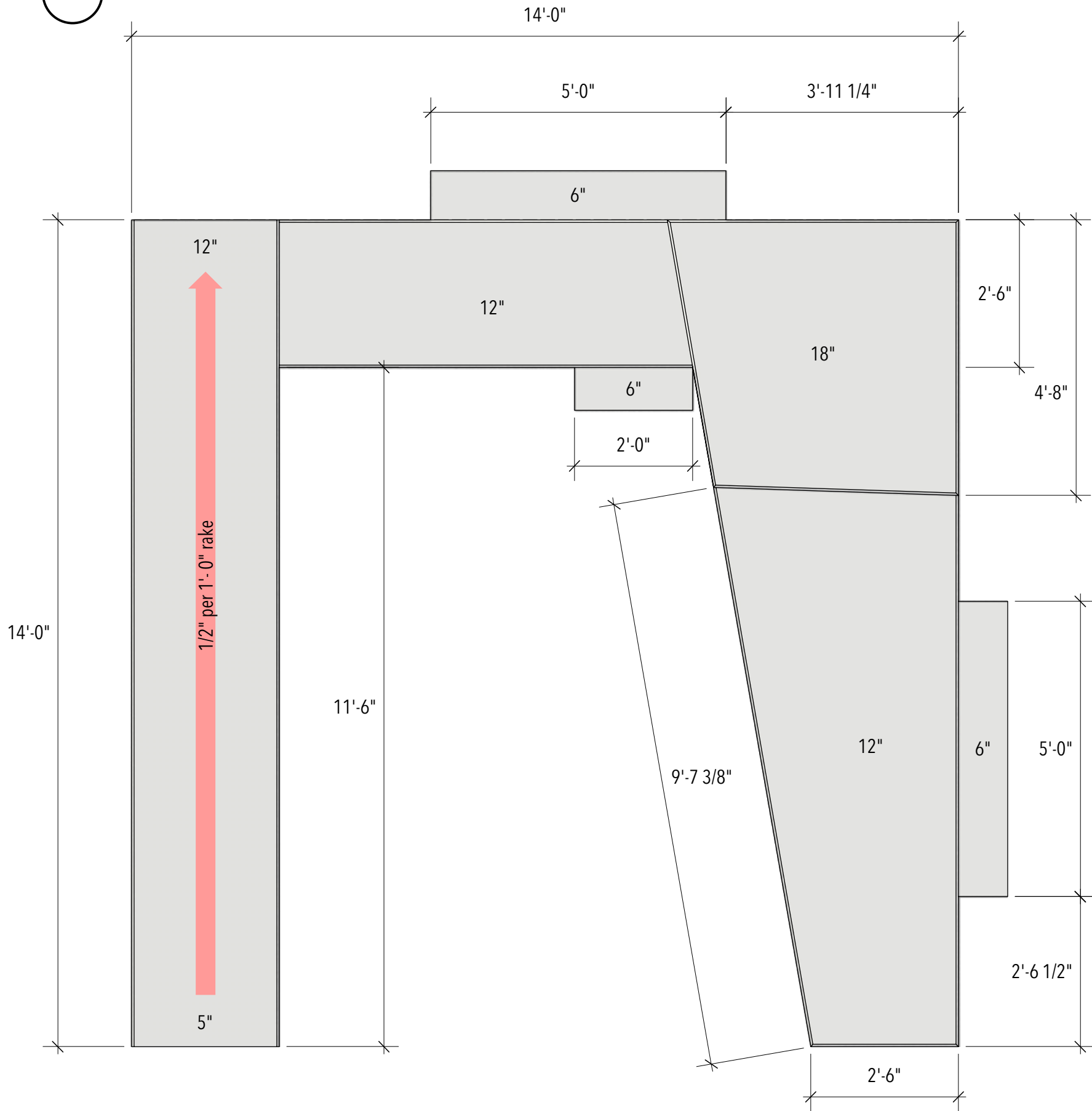
**A-1 Platform/Ramp: front**



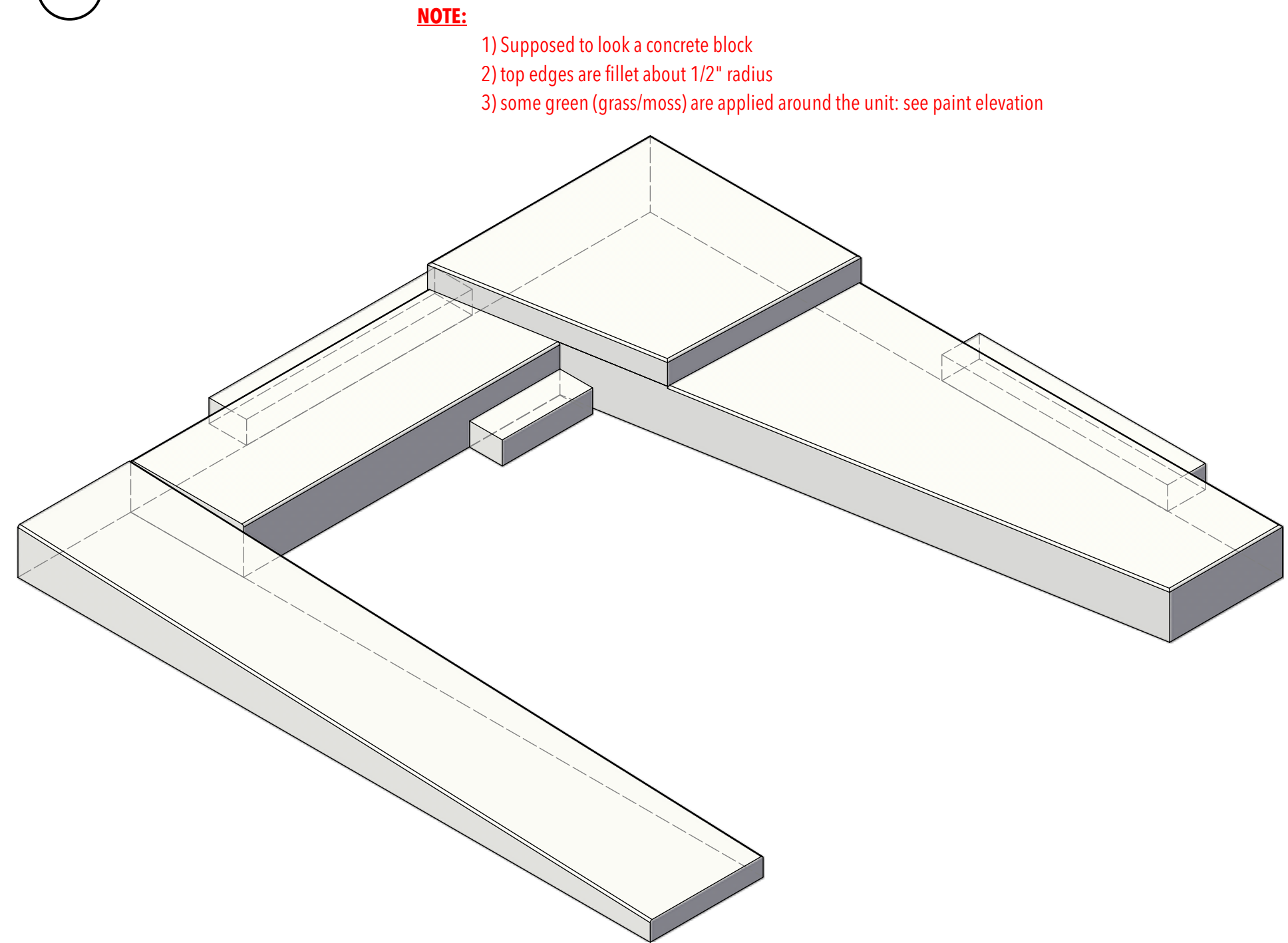
**A-3 Platform/Ramp: left**



**A-2 Platform/Ramp: plan**

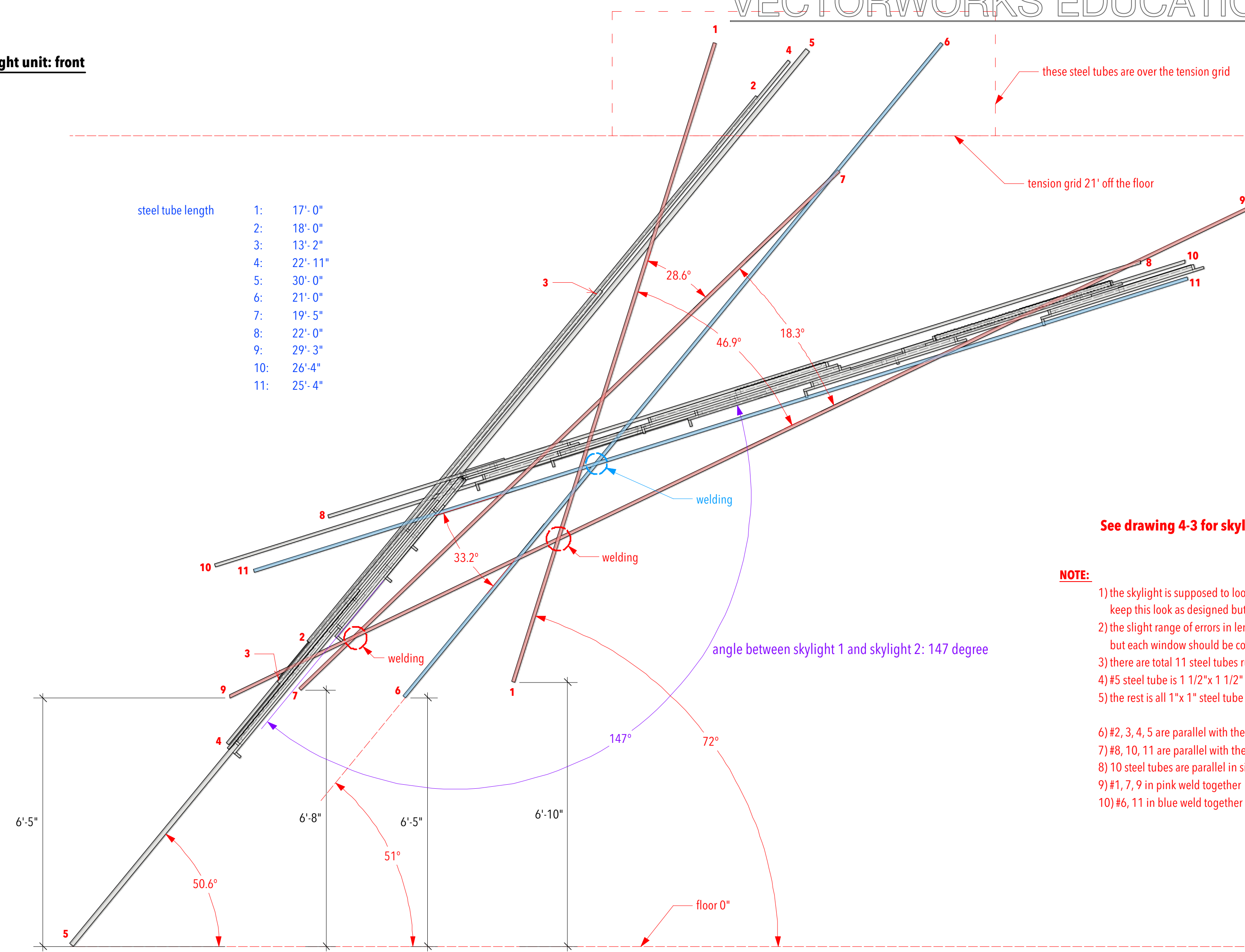


**A-4 Platform/Ramp: left isometric**

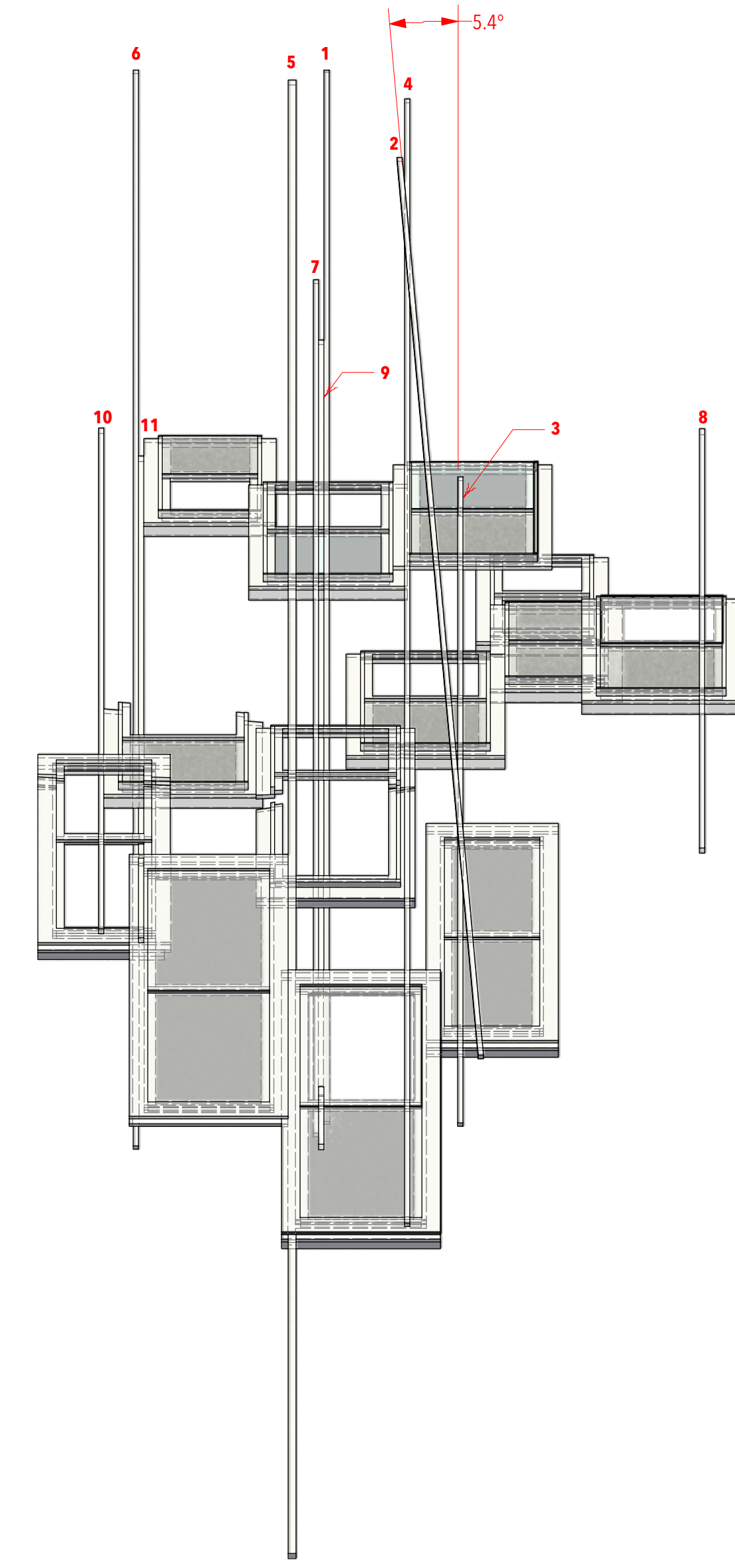


- NOTE:**
- 1) Supposed to look a concrete block
  - 2) top edges are fillet about 1/2" radius
  - 3) some green (grass/moss) are applied around the unit: see paint elevation

B-1 skylight unit: front



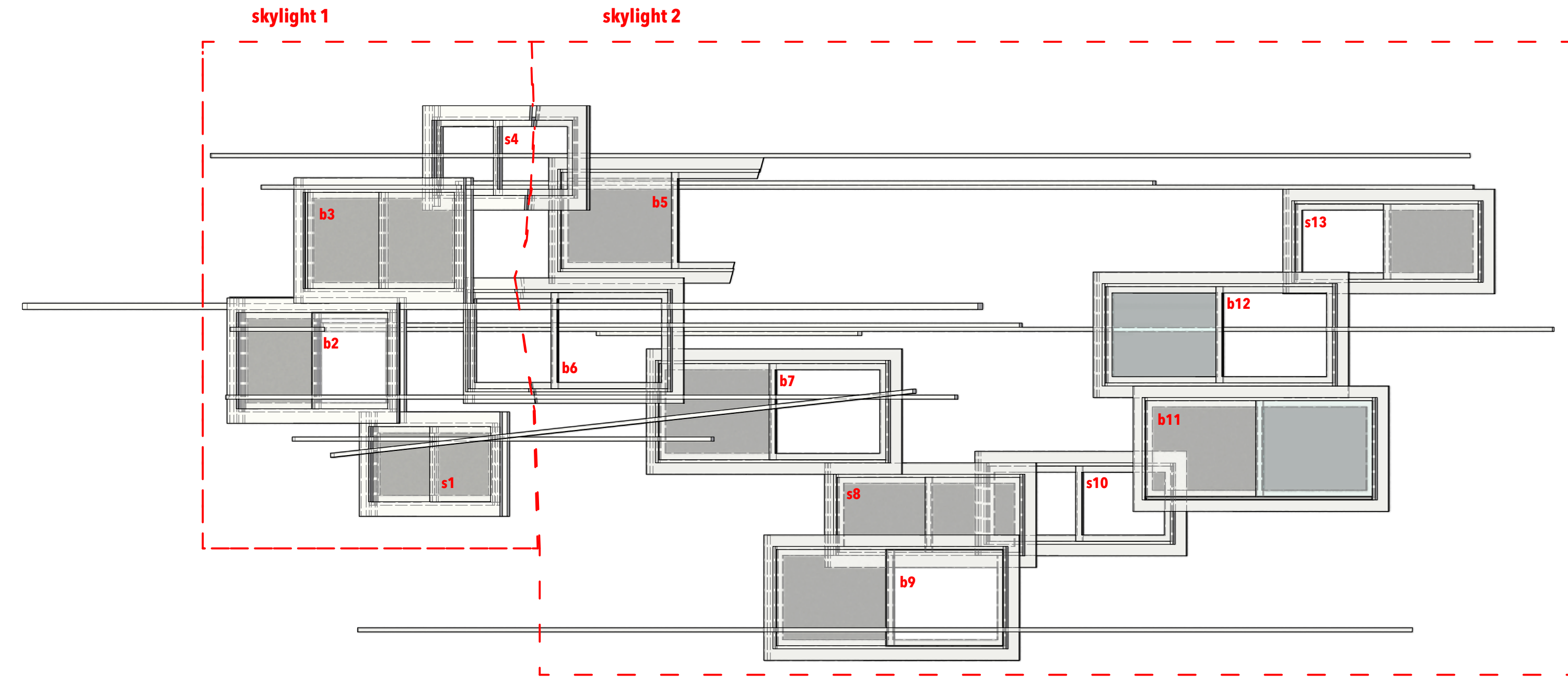
B-3 skylight unit: right



See drawing 4-3 for skylight 1 and 2 elevation details

- NOTE:**
- 1) the skylight is supposed to look an abandoned and dilapidated blight in Philadelphia: keep this look as designed but it can be adjustable as necessary in the process of execution
  - 2) the slight range of errors in length and angle within one inch or one degree is allowable in steel tube but each window should be correct dimensions: See drawing #4-2
  - 3) there are total 11 steel tubes running in space
  - 4) #5 steel tube is 1 1/2"x 1 1/2" in size: spine of the skylight unit
  - 5) the rest is all 1"x 1" steel tube
  - 6) #2, 3, 4, 5 are parallel with the skylight 1 in front view
  - 7) #8, 10, 11 are parallel with the skylight 2 in front view
  - 8) 10 steel tubes are parallel in side view: only #2 is 5.4 degree
  - 9) #1, 7, 9 in pink weld together
  - 10) #6, 11 in blue weld together

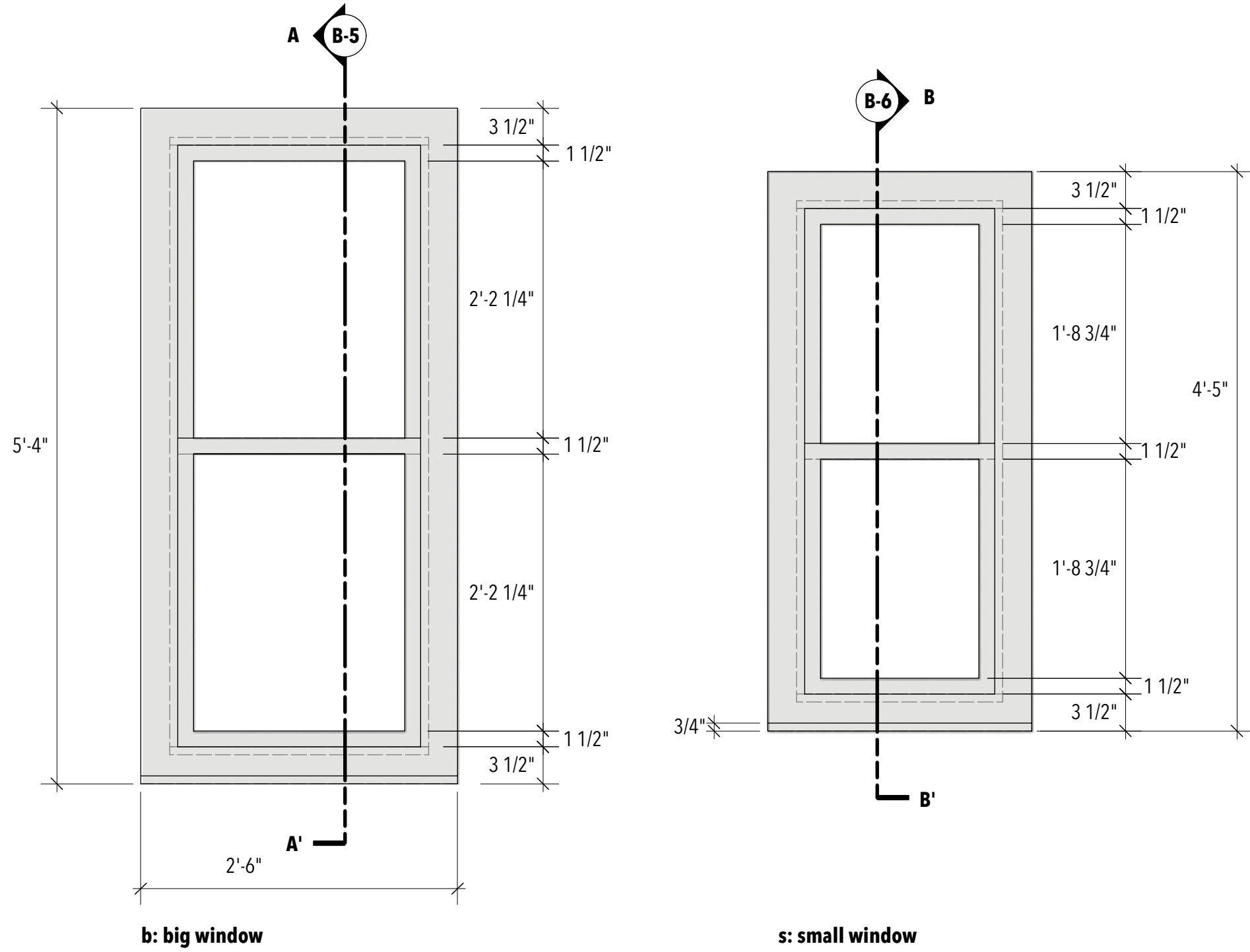
B-2 skylight unit: plan



See skylight window details in drawing #4-2

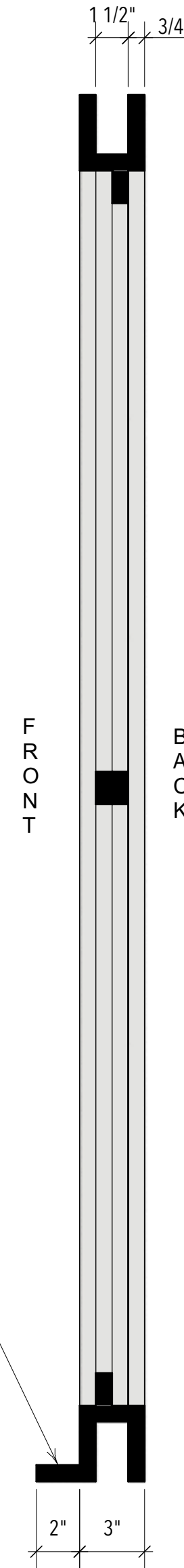
- NOTE:**
- 1) b: big window (total 8)
  - 2) s: small window (total 5)
  - 3) s1, b2, b3, s4 are sandwich window front and back, See drawing #4-2
  - 4) the rest of the window is only front side
  - 5) b3 and b11 have no window sill
  - 6) gray in the window indicates frosted plexiglass installed
  - 7) graffiti arts will be painted on the plexiglass
  - 8) white in the window indicates "open"
  - 9) total 13 windows: 8 big windows and 5 small windows

**B-4 Skylight window details: front**  
scale: 1"= 1'-0"

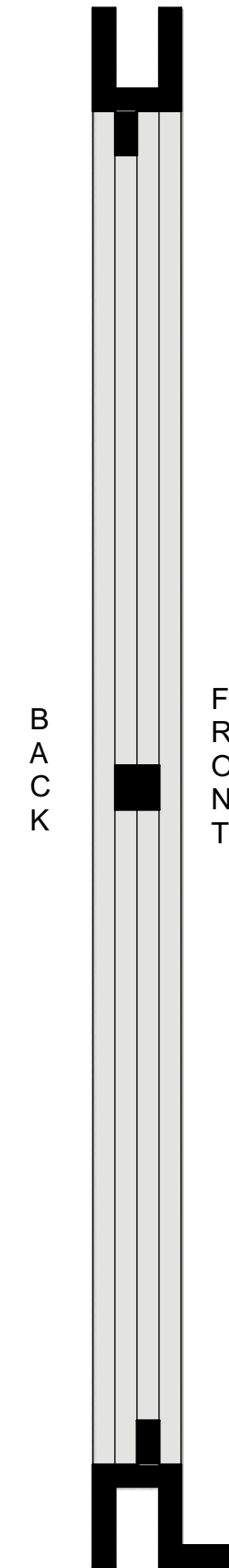


- NOTE:**
- 1) b: big window (total 8)
  - 2) s: small window (total 5)
  - 3) s1, b2, b3, s4 are sandwich window front and back, **See B-7 isometric view**
  - 4) the rest of the window is only front side
  - 5) b3 and b11 have no window sill

**B-5 Skylight window 1: section AA'**  
scale: 2"= 1'-0"



**B-6 Skylight window 2: section BB'**  
scale: 2"= 1'-0"



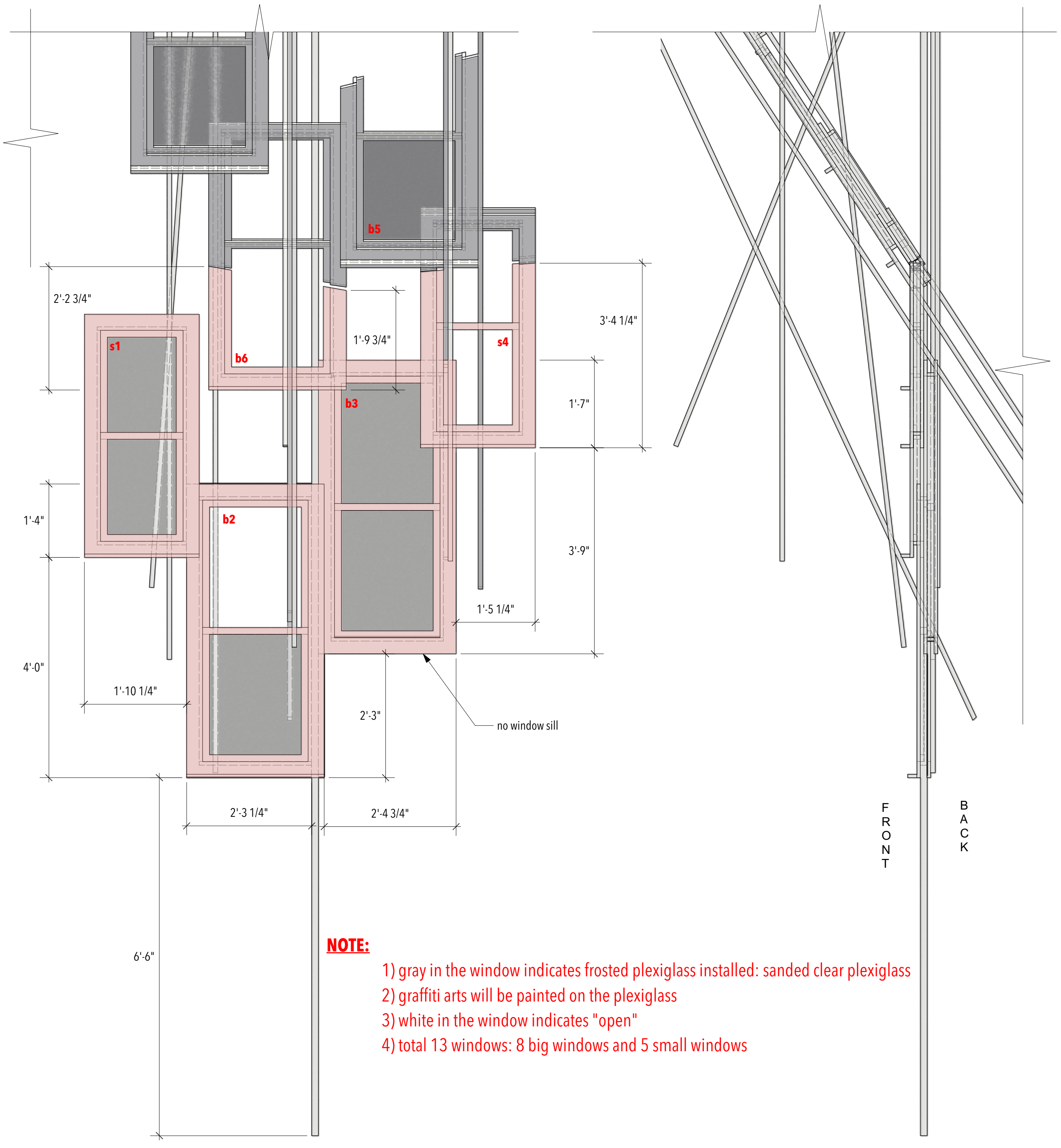
**B-7 Skylight windows: isometric**  
scale: 1"= 1'-0"



**NOTE:**  
- sandwich window front and back side

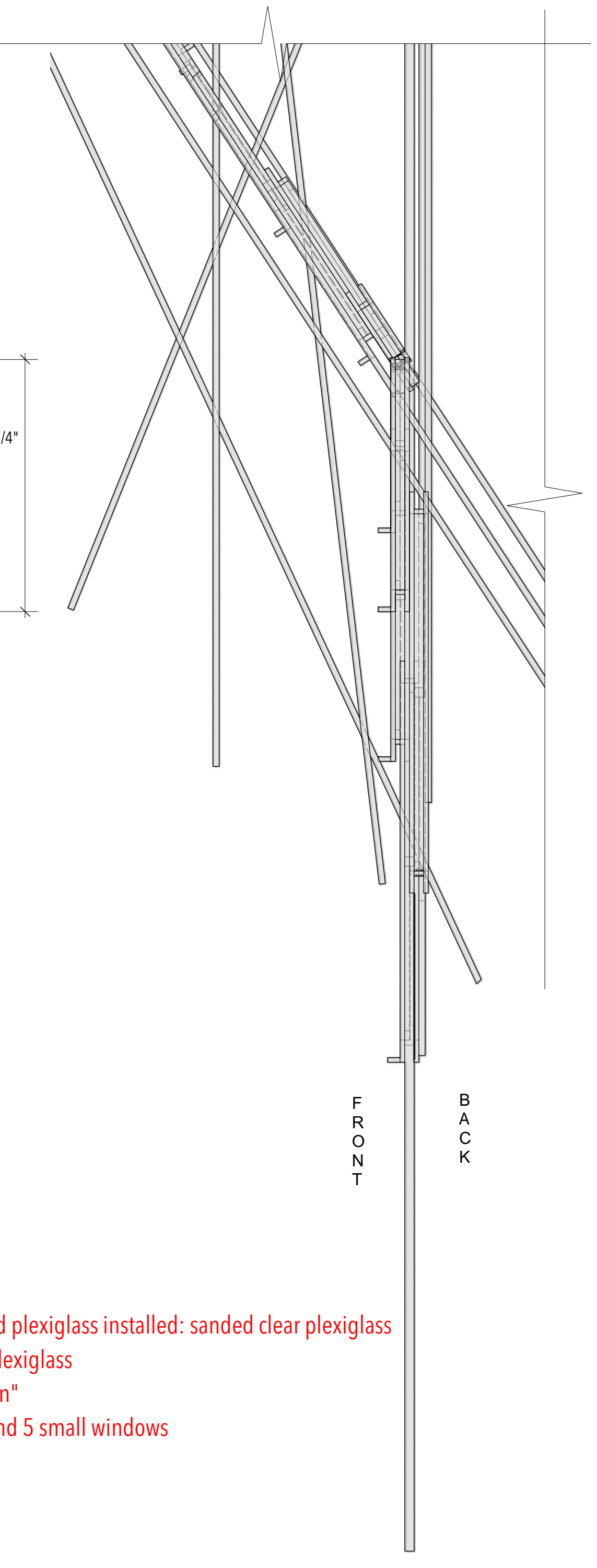


B-8 Skylight 1 in pink: front (view from onstage)

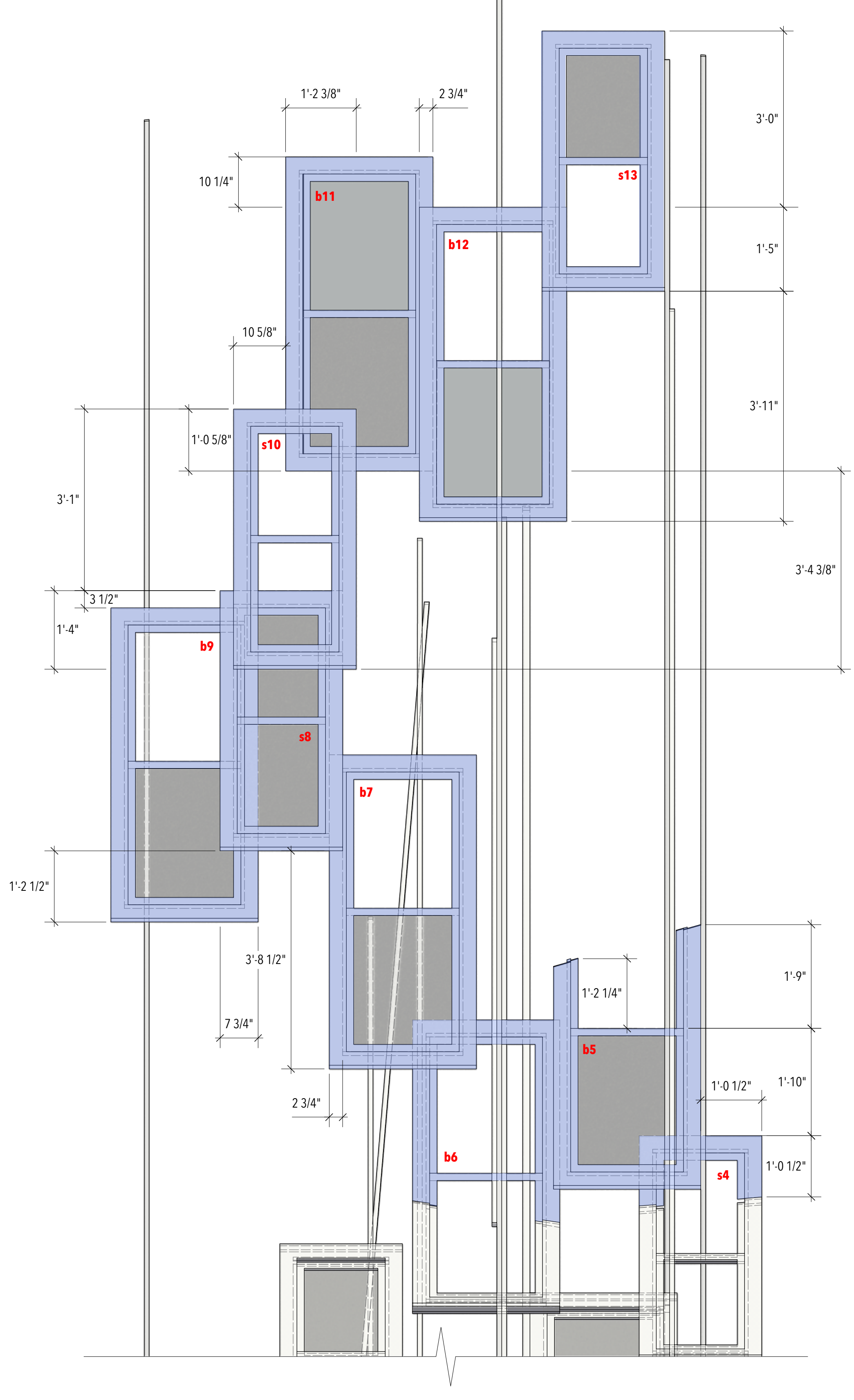


- NOTE:**
- 1) gray in the window indicates frosted plexiglass installed: sanded clear plexiglass
  - 2) graffiti arts will be painted on the plexiglass
  - 3) white in the window indicates "open"
  - 4) total 13 windows: 8 big windows and 5 small windows

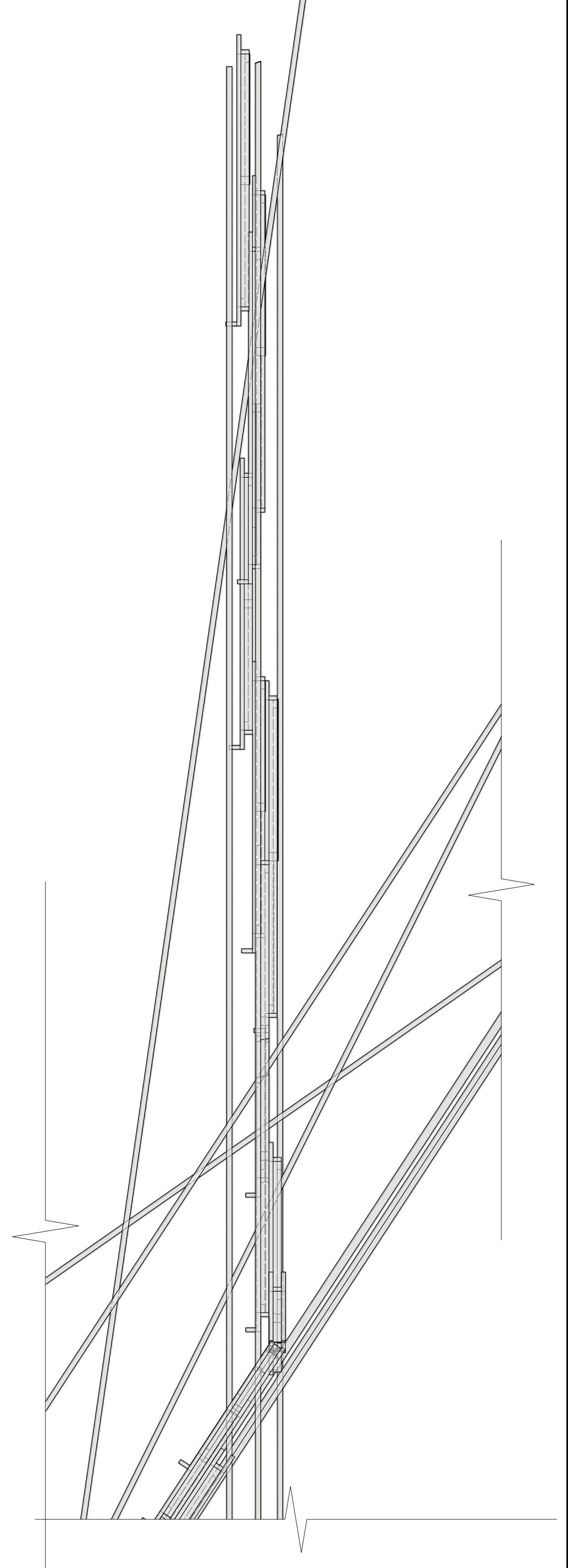
B-8 Skylight 1: right



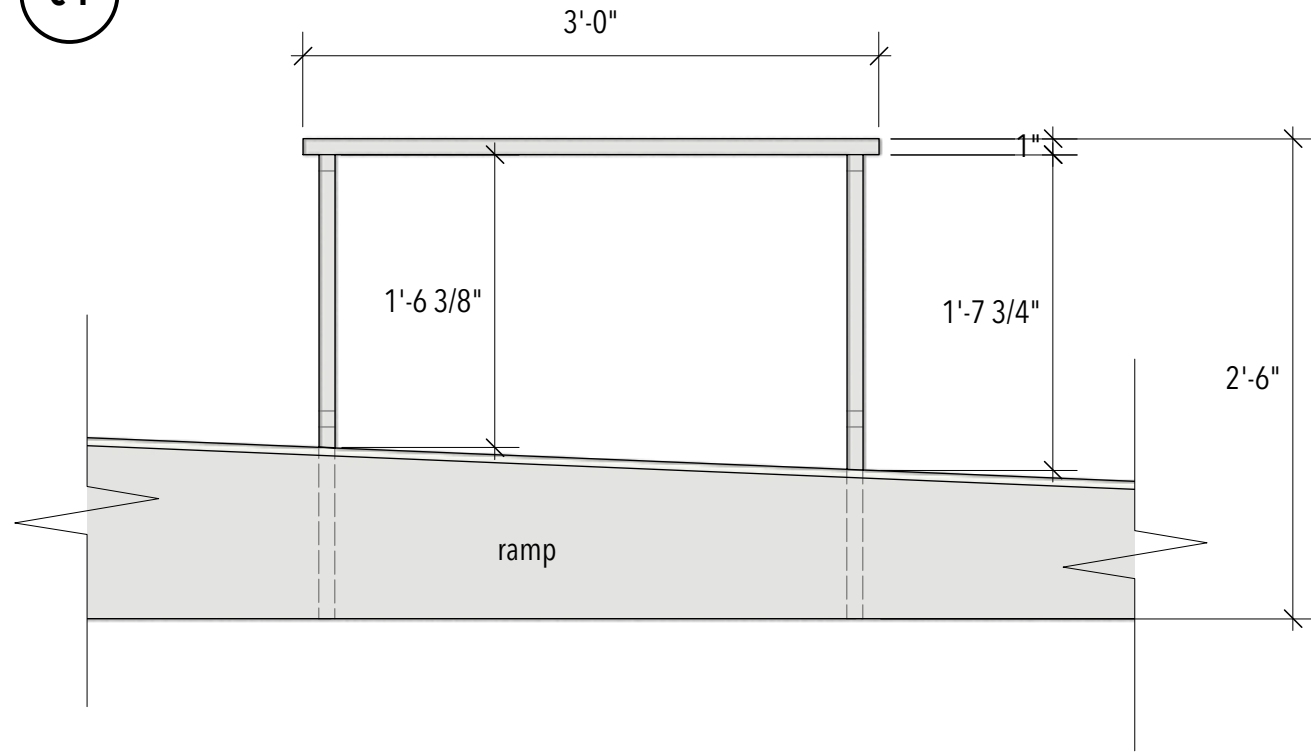
B-9 Skylight 2 in blue: front (view from onstage)



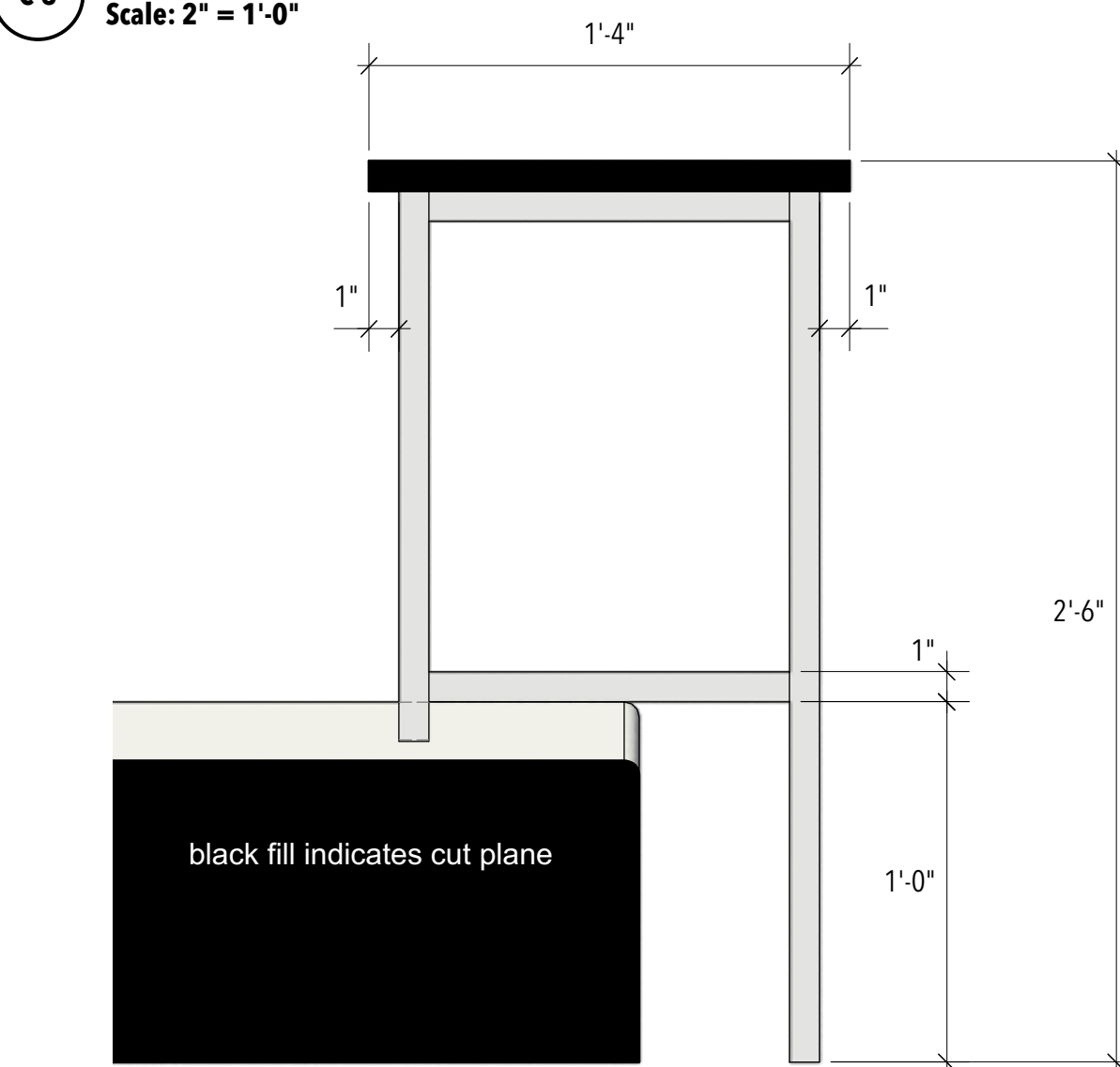
B-9 Skylight 2: right



**C-1 Table on the ramp: front**

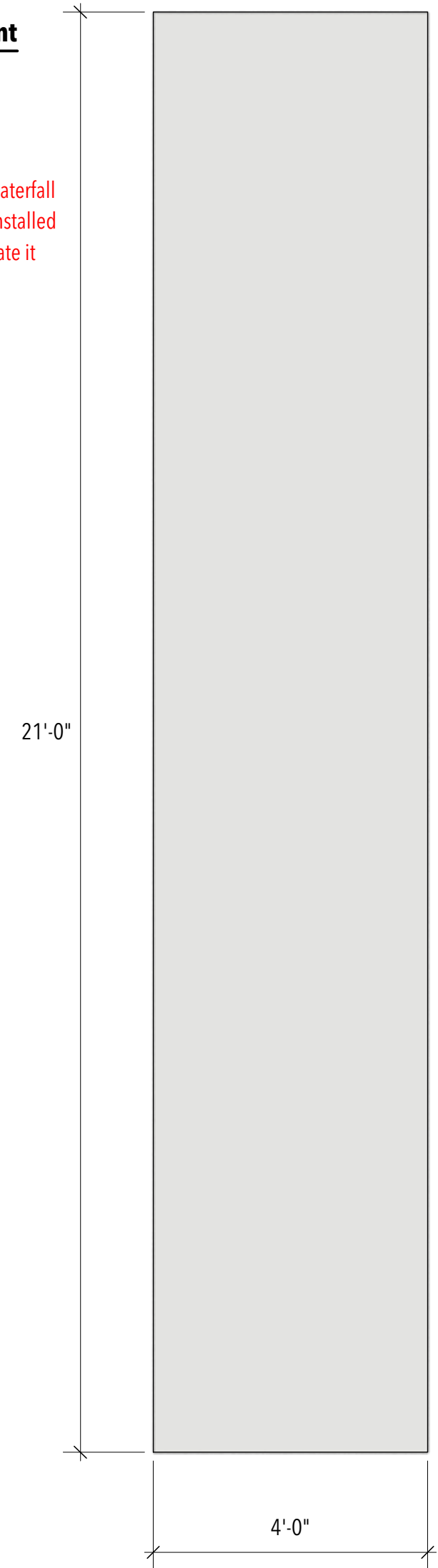


**C-3 table on the ramp: section CC'**

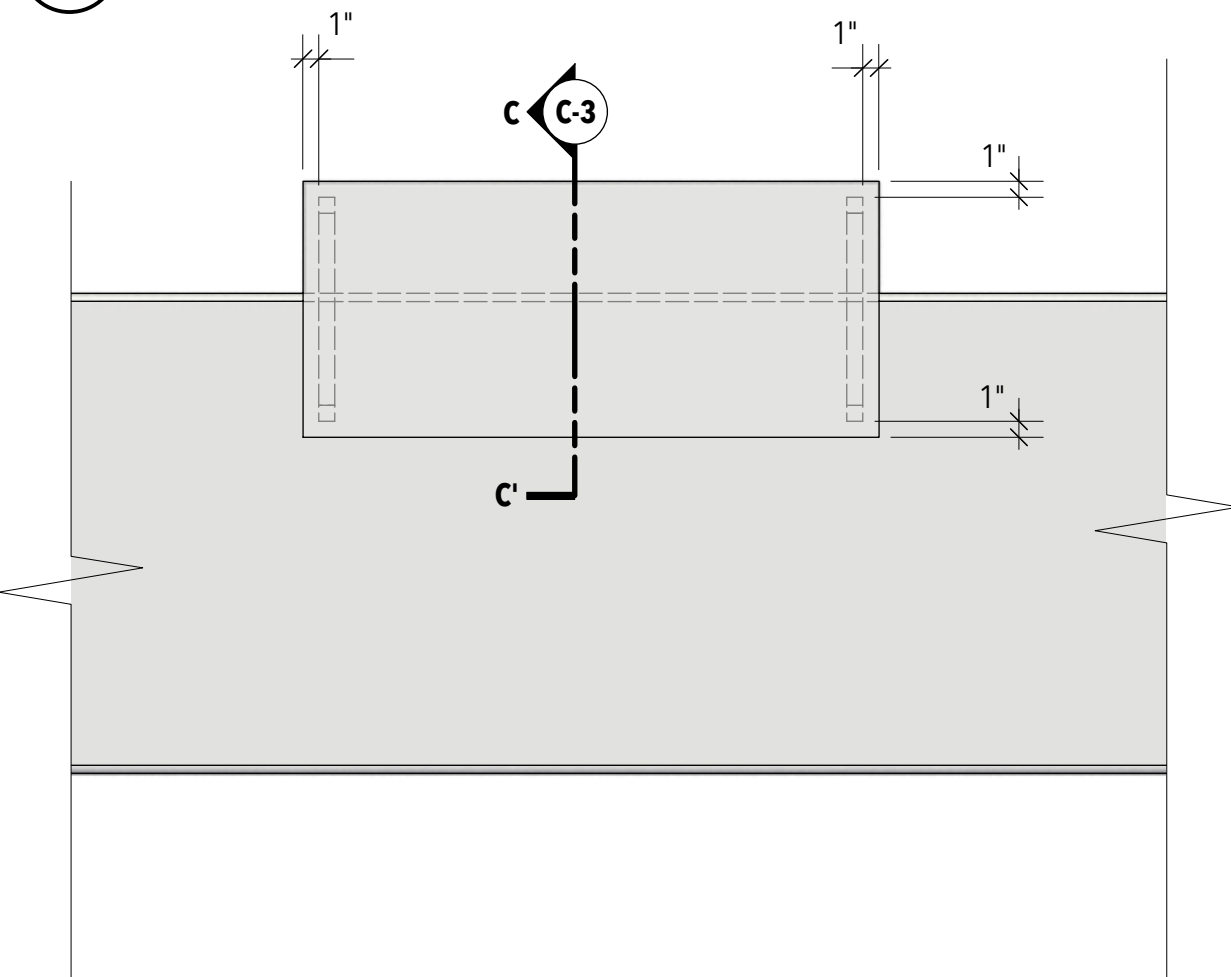


**E-1 waterfall scrim: front**

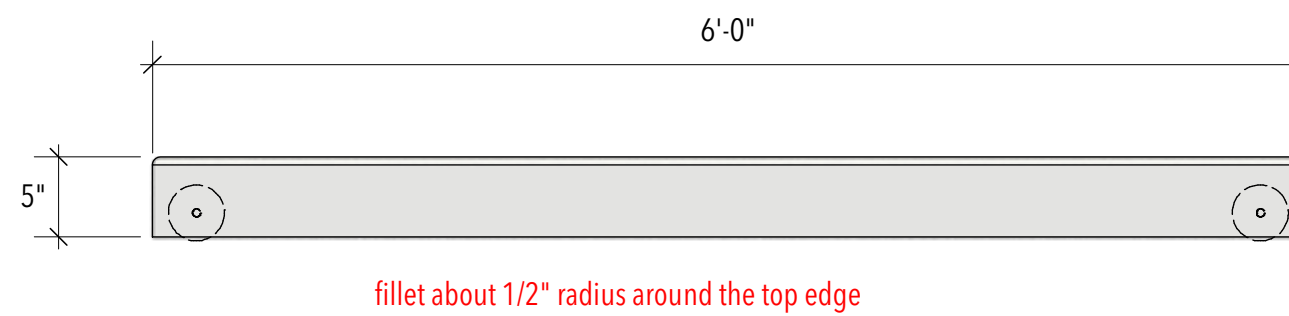
**NOTE:**  
 1) gray scrim that suggests a waterfall  
 2) a device (rolldrum) can be installed under the tension grid to operate it



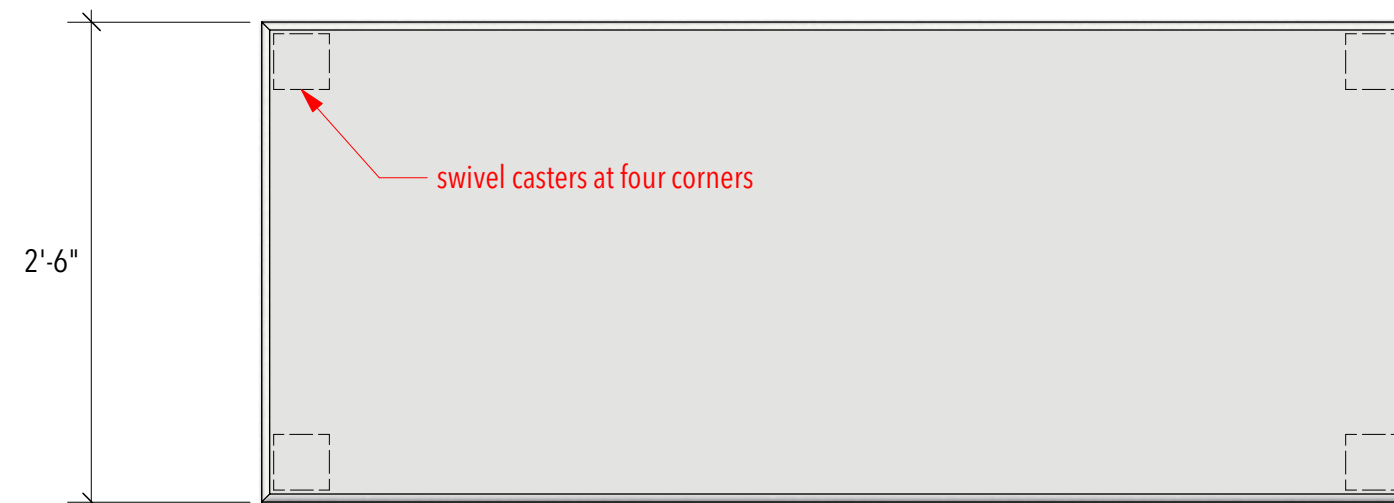
**C-2 Table on the ramp: plan**



**D-1 bathtub carrier: front**



**D-2 bathtub carrier: plan**



**NOTE:**  
 - a bathtub is placed on the carrier and rolled onstage at the final scene