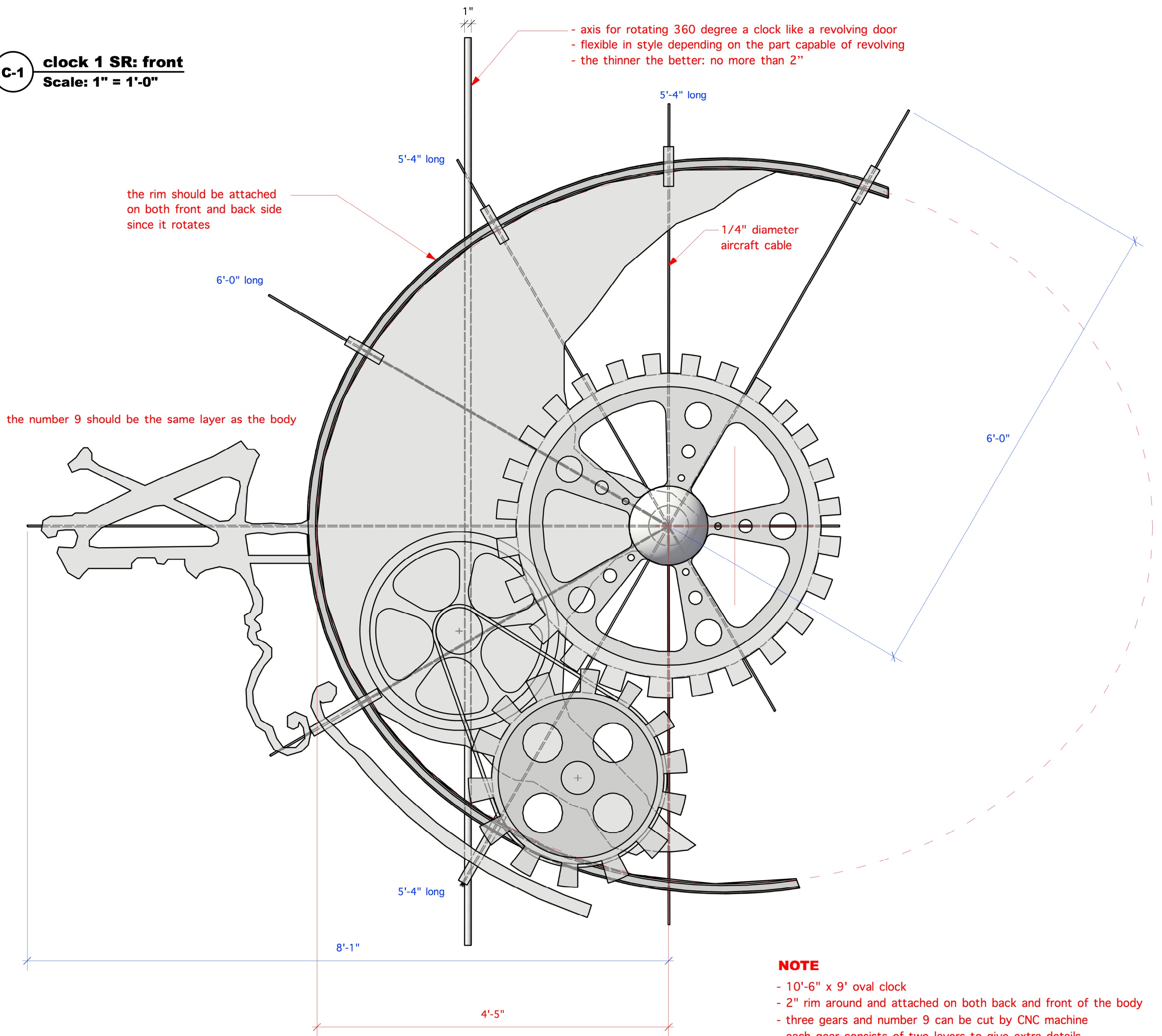


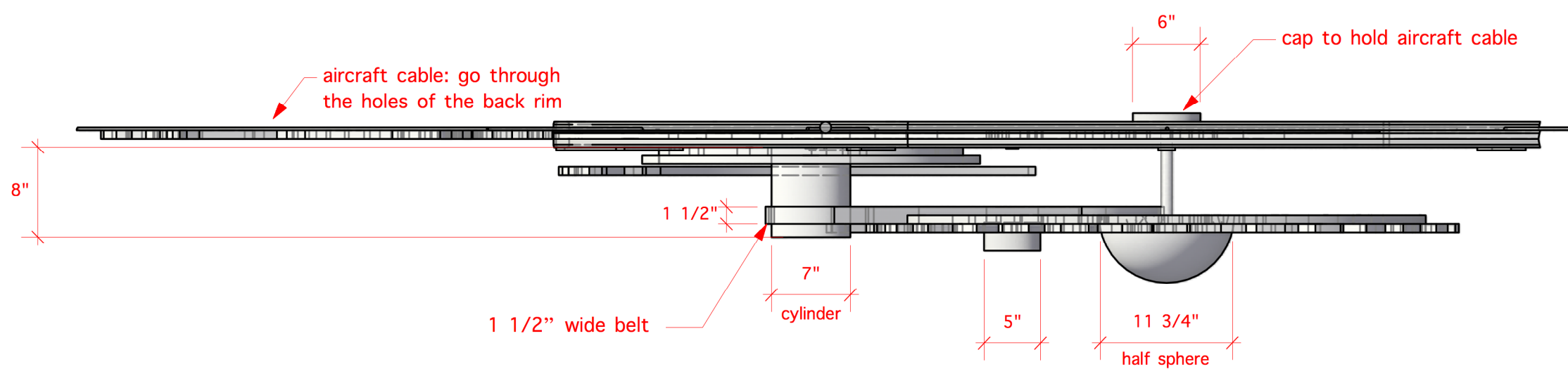
C-1 clock 1 SR: front
Scale: 1" = 1'-0"



NOTE

- 10'-6" x 9' oval clock
- 2" rim around and attached on both back and front of the body
- three gears and number 9 can be cut by CNC machine
- each gear consists of two layers to give extra details
- CNC cut drawings are sent in dxf/dwg file
- all layers are 3/4" thick plywood
- each piece needs to be sanded to get as smooth surface as possible to look a steel material
- the sharp cutting edge needs to be rounded with router about 1/2" radius

C-2 clock 1 SR: plan
Scale: 1" = 1'-0"



The Winnepesaukee Playhouse

Director: Jake Nice
Scene Designer: Inseung Park
Technical Director: L. W. Miller

EVERYBODY

Drafter: Inseung Park

Scale: 1" = 1'-0"

Clock SR

Date: Nov 9, 2018

5-1

Of