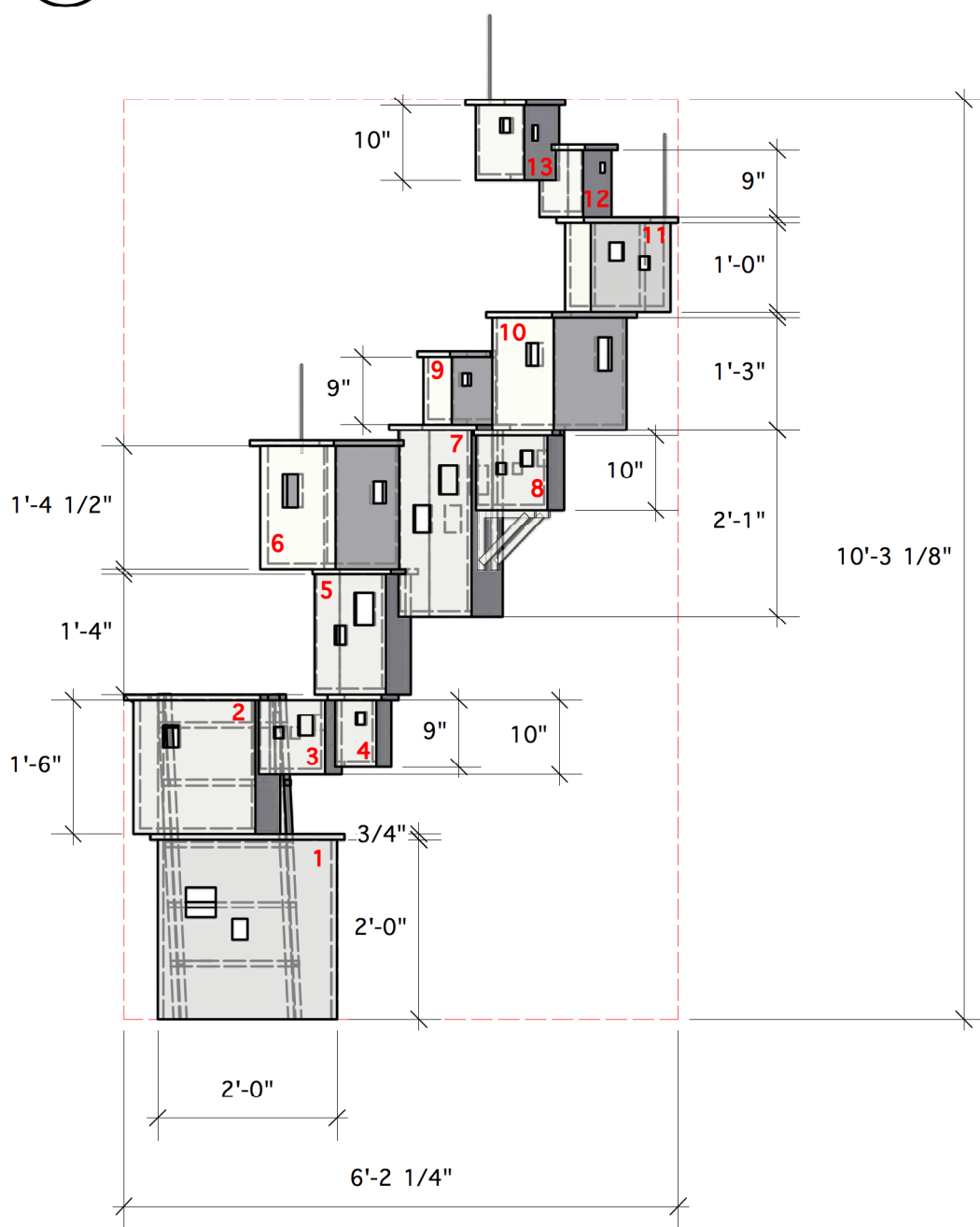


F-1

village: front

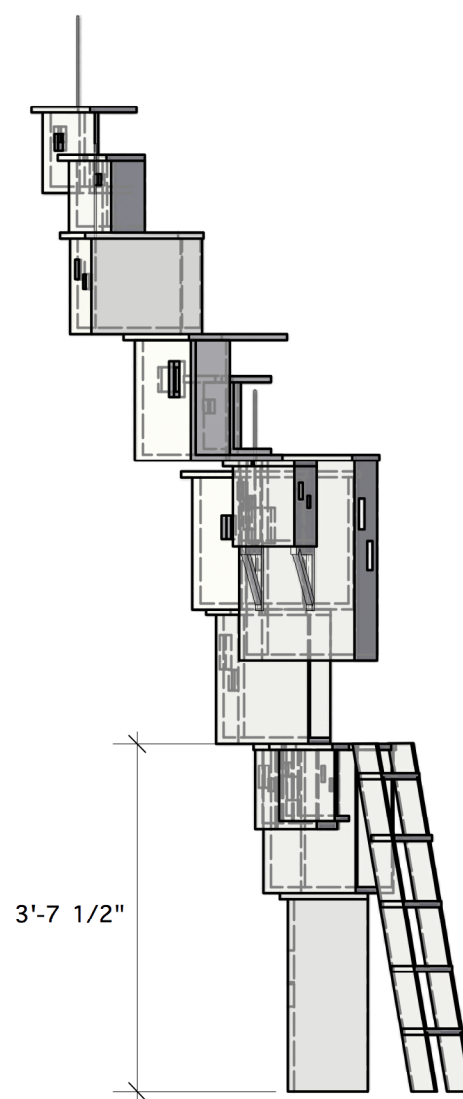
Scale: 1/2" = 1'-0"



F-3

village: right

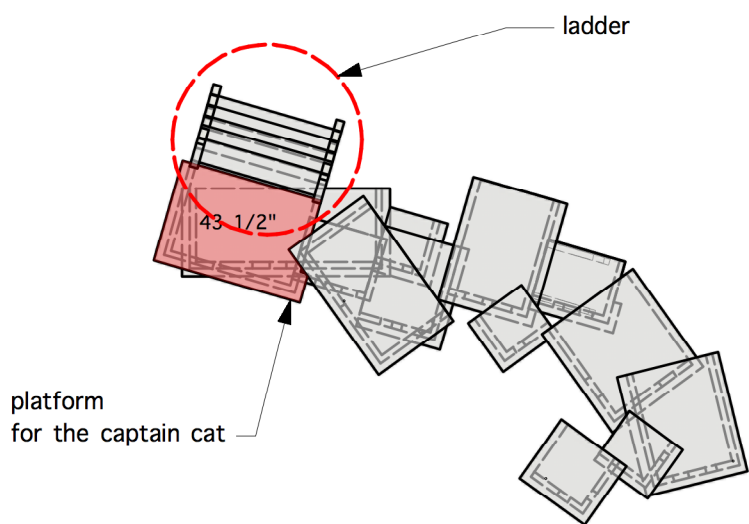
Scale: 1/2" = 1'-0"



F-2

village: plan

Scale: 1/2" = 1'-0"



- total 13 houses piled up
- each house is built out of 1/2" plywood
- only three sides where the audience can see
- a 3/4" thick flat roof top is placed on top of each house

University of New Mexico, Department of Theatre and Dance

Director: Kate Clarke
 Scenic Designer: Inseung Park
 Technical Director Michael Hidalgo:

UNDER MILK WOOD

Drafter: Inseung Park Scale: 1/2" = 1'-0"

Village

Date: July 28, 2018

8-1

Of 8