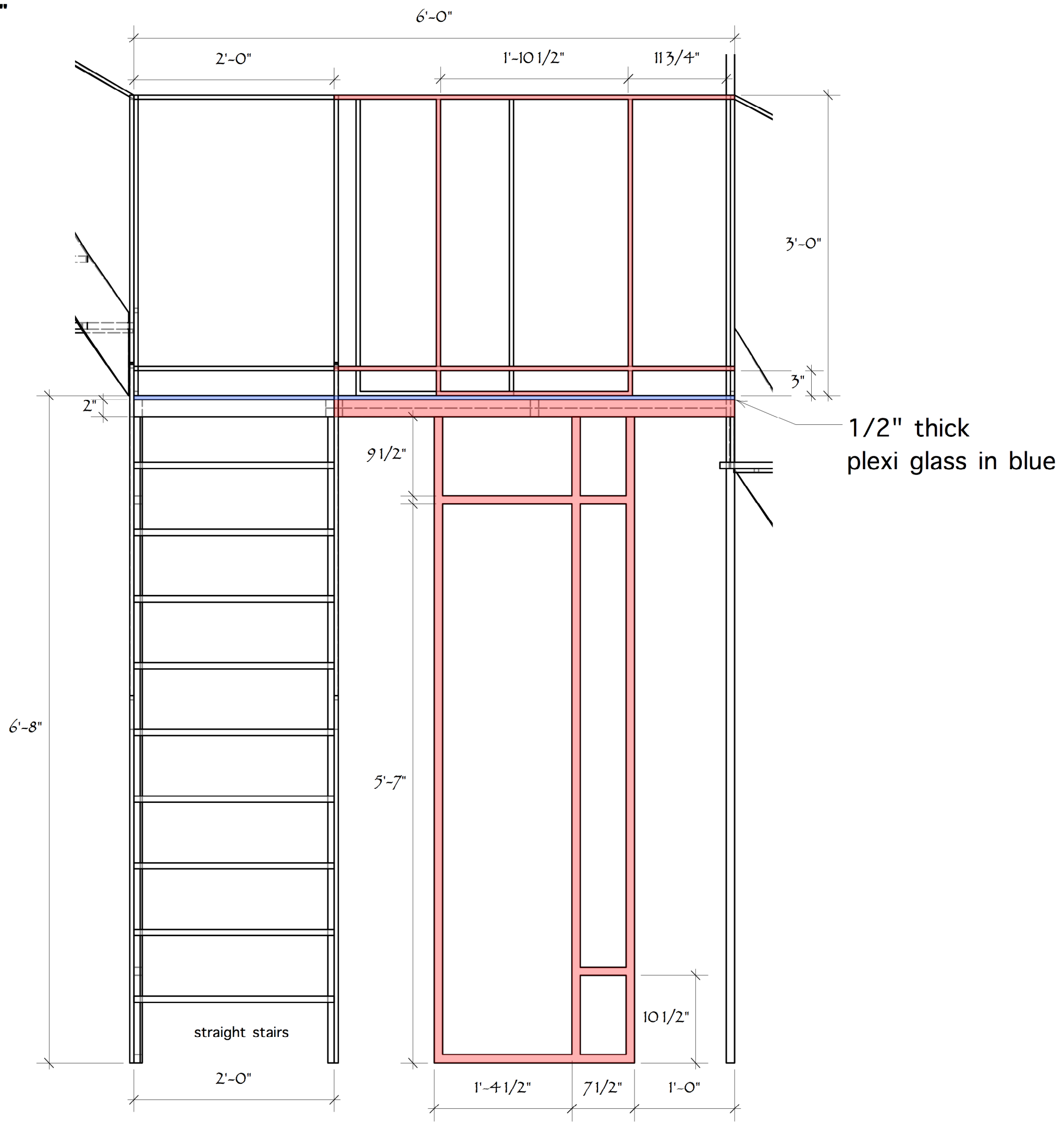
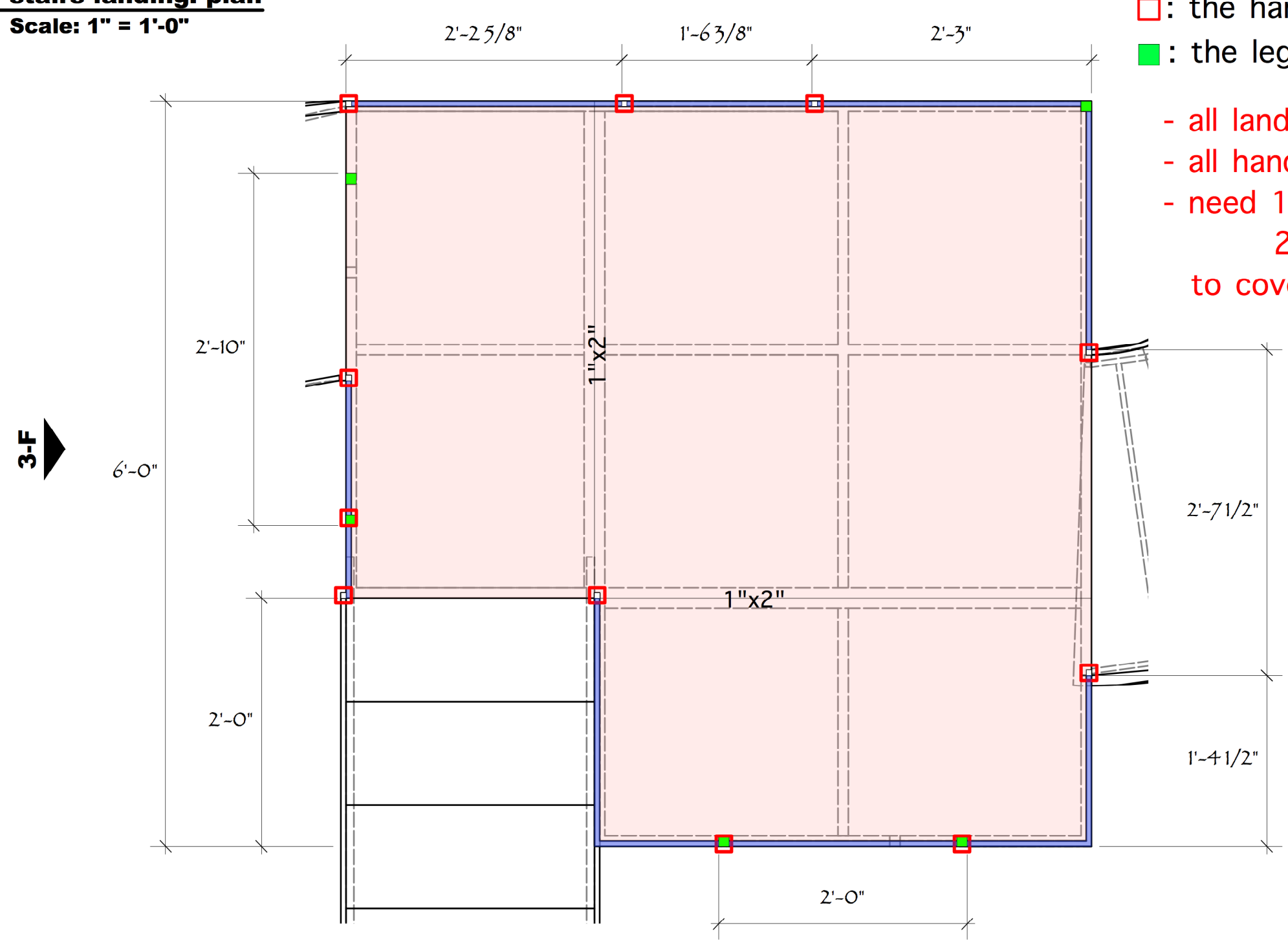


**3-D stairs landing: front**  
Scale: 1" = 1'-0"



**3-E stairs landing: plan**  
Scale: 1" = 1'-0"



- : the handrailing post on the platform - total 11
- : the legs to support the platform - total 5
- all landing frames are 1"x1" steel tube
- all handrailing posts are 1/2"x1/2" steel tube
- need 1) one 1/2" thick plexi-glass 4'x4' in size
- 2) two 1/2" thick plexi-glass 2'x4' in size to cover pink area

THEATRE 3

Director: Tiffany Greene  
Scenic Designer: Inseung Park  
Technical Director: Jon Leitch  
Artistic Director: Jeffrey Schmidt

**LES LIAISONS DANGEREUSES**

Drafter: Inseung Park Date: May 1, 2018

Stairs landing: front, plan view

Scale: 1"=1'-0"